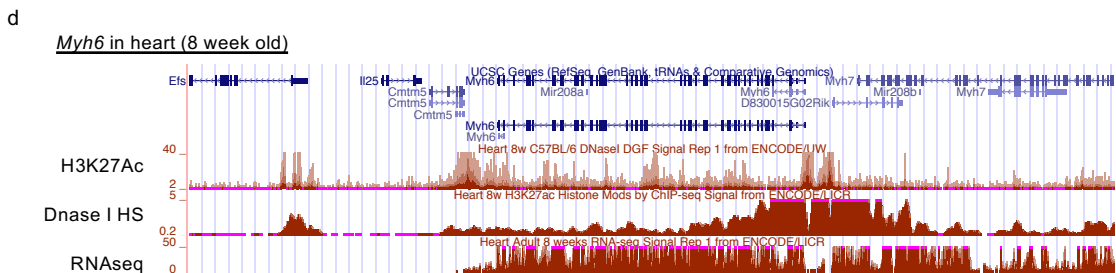
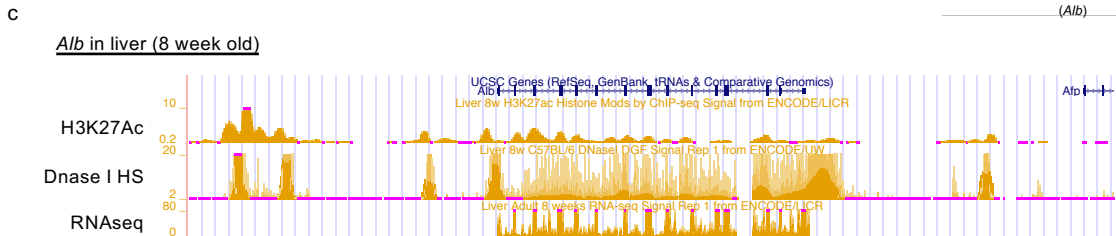
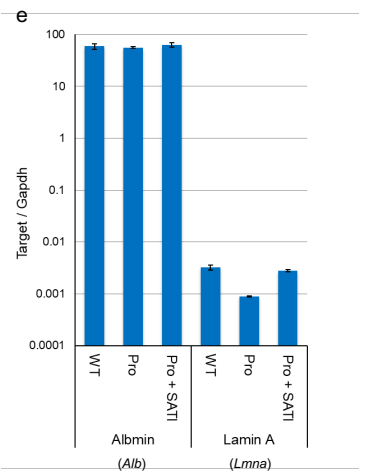


b

Liver (day 100)		Heart (day 100)	
#1	#2	#1	
Captured exon	# of clones	Captured exon	# of clones
<i>Lmna</i> exon 10 (not corrected)	57	<i>Lmna</i> exon 10 (not corrected)	28
<i>Lmna</i> exon 10 (corrected)	4	<i>Lmna</i> exon 10 (corrected)	6
<i>Alb</i> exon 7	3	<i>Alb</i> exon 5	2
<i>Alb</i> exon 9	5	<i>Alb</i> exon 7	9
<i>Alb</i> exon 12	7	<i>Alb</i> exon 9	10
<i>Alb</i> exon 13	7	<i>Alb</i> exon 10	4
<i>Trf</i> exon 9	2	<i>Alb</i> exon 12	9
<i>Trf</i> exon 15	3	<i>Alb</i> exon 13	9
<i>Igf1bp1</i> exon 3	1	<i>Alb</i> exon 14	1
<i>Ahsg</i> exon 4	1	<i>Trt</i> exon 3	2
<i>Ahsg</i> exon 5	1	<i>Igf1bp1</i> exon 3	1
<i>Apob</i> exon 8	1	<i>Ahsg</i> exon 5	1
<i>Apob</i> exon 15	1	<i>Apob</i> exon 9	1
Total	93	Total	83



Supplementary Figure S12 | Genome-wide off-target analysis in the liver and heart of SATI-treated progeria mice at day 100. **a** The intronic SATI-mediated gene-targeting strategy knock-ins a “half-gene of *Lmna*” which including splicing acceptor. The off-target integration of the donor captures the transcript of the integration site and express as a fusion gene. The captured exons including from on target *Lmna* exon 10 and unknown off-target gene were determined with 5'RACE and sequencing. Blue half-arrows, PCR primers for 5'RACE. **b** The list of the captured exons in liver and heart from SATI-treated mice at day 100. The data was obtained from two mice (#1 and #2). **c** Chromatin (H3K27Ac and DNaseI HS) and expression (RNAseq) status of the major off-target gene, *Alb*, in the liver of 8-week-old mice. **d** Chromatin (H3K27Ac and DNaseI HS) and expression (RNAseq) status of the major off-target gene, *Myh6*, in the heart of 8-week-old mice. **e** RT-qPCR analysis for the expression ratio of *Albmin* to *Gapdh* (left) and *Lamin A* to *Gapdh* (right) in liver from SATI-treated mouse at day 100 ($n = 3$). Data are represented as mean \pm s.e.m.