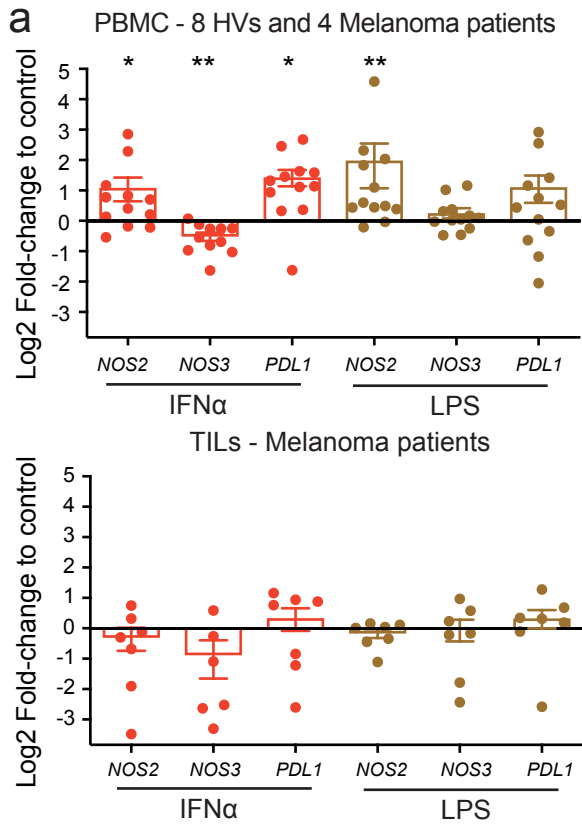
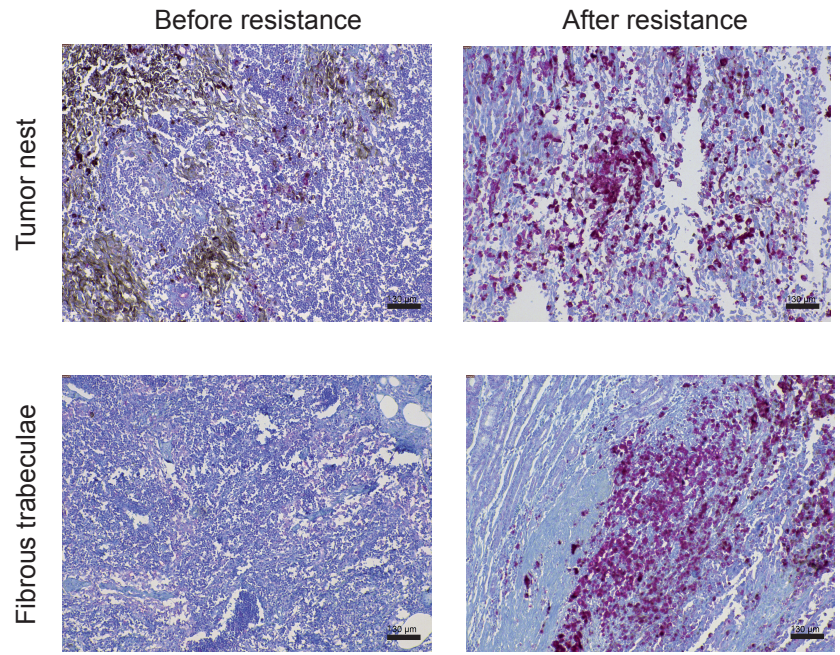


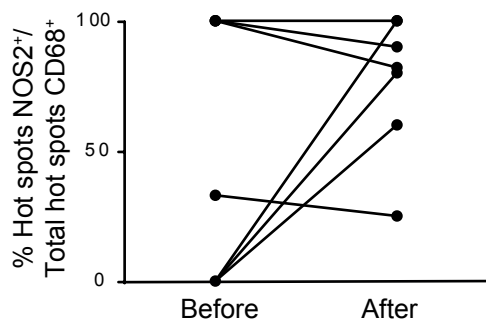
Figure S10



b



c



Supplementary information, Fig S10. NOS2 upregulation post anti-PD-1 therapy in melanoma patients.

(a) Relative expression of *NOS2*, *NOS3* and *PDL1* quantified by qRT-PCR following stimulations by type I IFN and LPS in peripheral blood mononuclear cells (PBMC) from 8 healthy volunteers and 4 melanoma patients (upper panel) together with TILs from 7 stage III/IV melanoma patients (lower panel). Log₂ fold-change relative to untreated control is represented. Each dot represents one healthy volunteer or patient. Means \pm SEM are shown. Statistical analyses were performed using Wilcoxon matched-pairs signed rank test (compared to untreated control conditions). * $p < 0.05$, ** $p < 0.01$. (b) Representative IHC images from tumor samples from a melanoma patient are shown for intratumor and peritumor areas, before and after anti-PD-1 therapy. NOS2-positive cells are stained red. Magnification = 100X. (c) Quantification of NOS2-positive hotspots relative to the total number of CD68 positive hot spots in each sample. Each dot represents 1 patient (n=7). Results are presented as percentages.