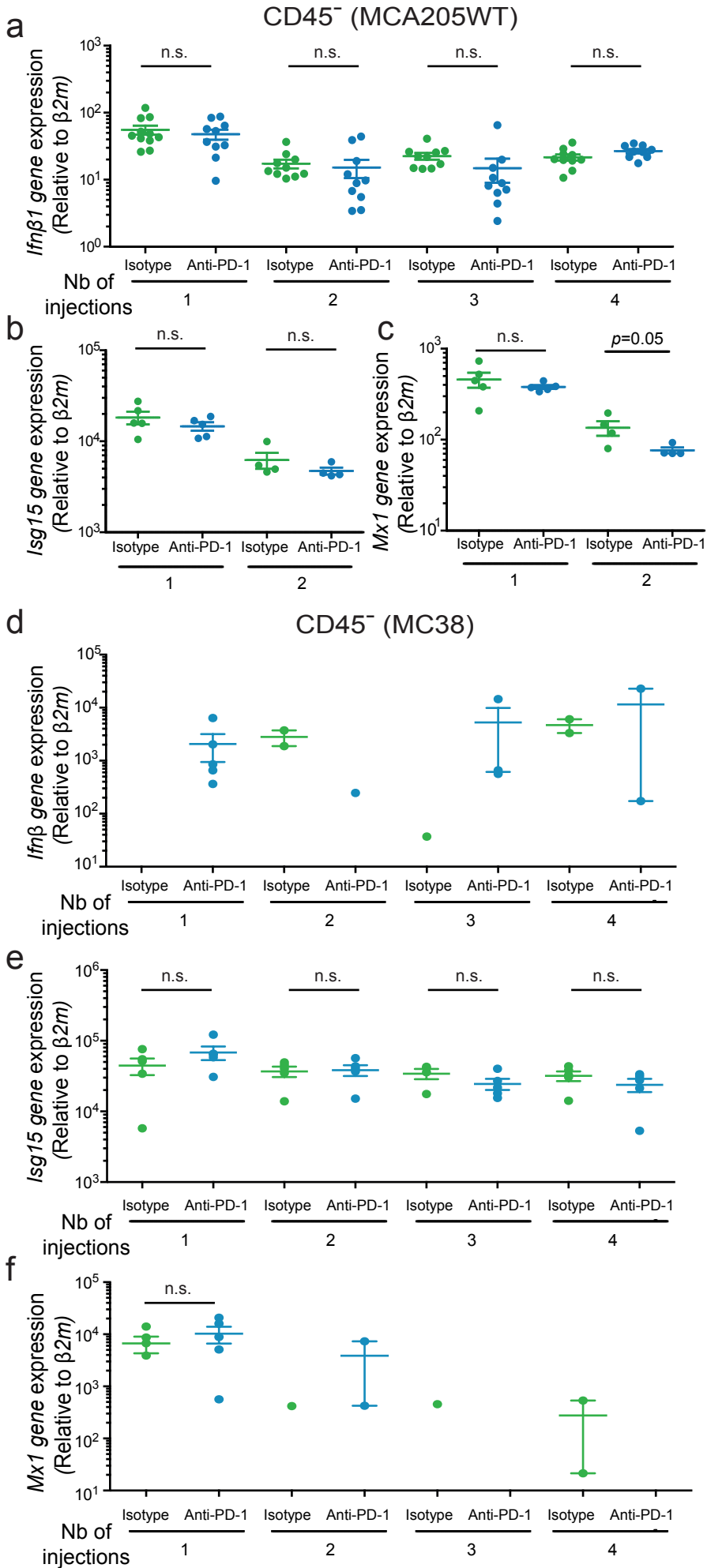


Figure S4



Supplementary information

Supplementary information, Fig S4. IFN β and ISG gene expression levels in CD45⁻ cells isolated from MCA205WT and MC38 tumors. (a-f) *In vivo* experiments. Flow cytometry sorting of CD45⁻ live fractions from the TME of MCA205WT (a-c) or MC38 (d-f) tumors 48 hrs after 1, 2, 3 or 4 i.p. administrations of anti-PD-1 or isotype control mAbs. Relative expression of *Ifn β 1* (a and d) and IFN-sensitive gene products (b-c and e-f) quantified by qRT-PCR. Statistical analyses were performed using unpaired t-tests to compare transcription levels between the anti-PD-1 and isotype control treated groups for each time point. Each dot represents 1 mouse with 5 mice per time point and per experiment. Graphs represent 1 representative experiment out of 2-3 independent experiments (MC38, time points 1 and 2, b-c), 1 experiment (MC38, time points 3 and 4) or are the pool of 2-3 independent experiments (a). *Ifn β* and *Mx1* gene expression levels were not detected in many samples (d and f). n.s.: not significant. Means \pm SEM are represented.