

Endoplasmic reticulum stress differentially modulates the IL-6 family of cytokines in murine astrocytes and macrophages.

Cristina L Sanchez¹, Savannah G Sims¹, John D Nowery¹, and Gordon P Meares^{1,2*}

¹West Virginia University, Department of Microbiology, Immunology, and Cell Biology, Morgantown, WV 26506, USA

²West Virginia University, Department of Neuroscience, Morgantown, WV 26506, USA

*To whom correspondence should be addressed:

Dr. Gordon Meares
West Virginia University School of Medicine
64 Medical Center Drive, HSC North 2084
Morgantown, WV 26506
304-293-6260
gpmeares@hsc.wvu.edu

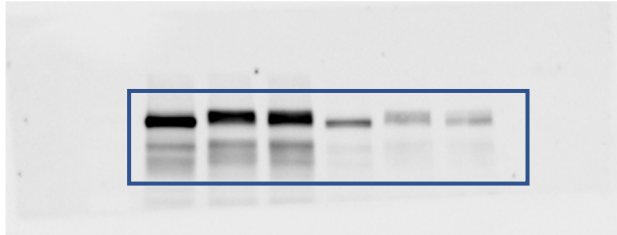
Supplemental

Supplemental Figure 1

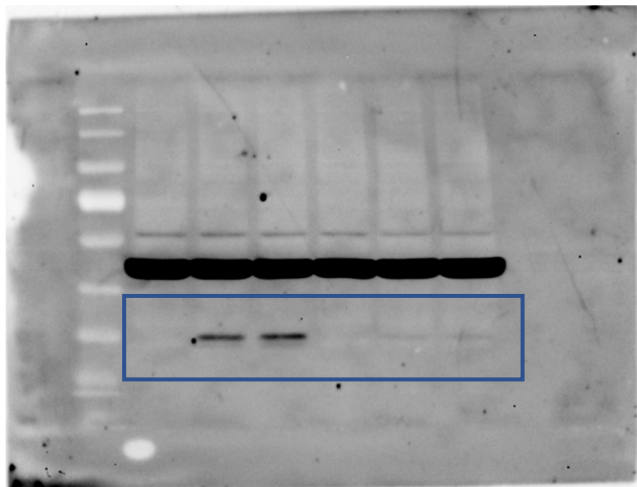
Immunoblots from figure 4

PERK

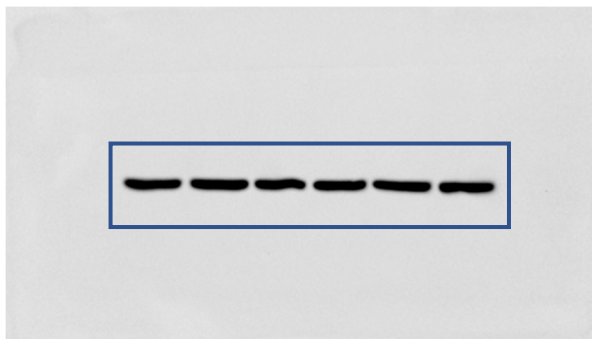
1 2 3 4 5 6



CHOP



GAPDH



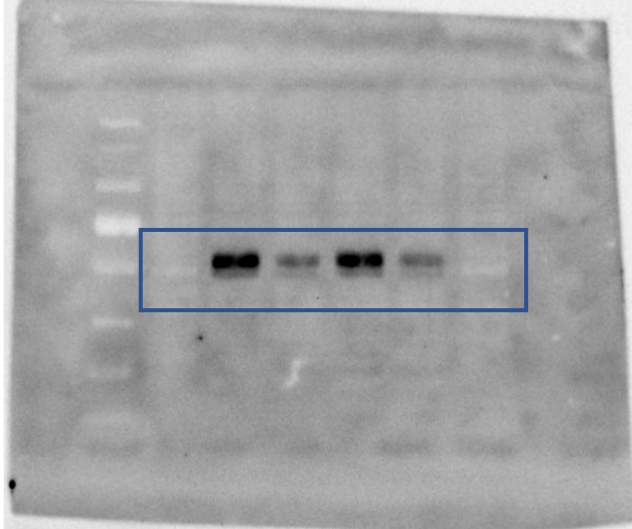
1. Cre-ERTM (-) Untreated
2. Cre-ERTM (-) Thapsigargin 1 μ M, 4 h
3. Cre-ERTM (-) Tunicamycin 5 μ M, 4 h
4. Cre-ERTM (+) Untreated
5. Cre-ERTM (+) Thapsigargin 1 μ M, 4 h
6. Cre-ERTM (+) Tunicamycin 5 μ M, 4 h

Supplemental Figure 2

Immunoblots from figure 5

ATF4

1 2 3 4 5 6



GAPDH



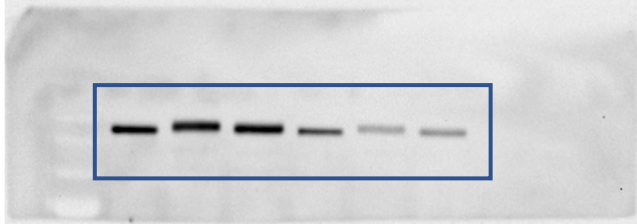
1. Untreated
2. Thapsigargin 1 μ M, 4 h
3. ISRIB 0.5 μ M 30 min pre + Thapsigargin 4 h
4. Tunicamycin 5 μ M, 4 h
5. ISRIB 30 min pre + Tunicamycin 4 h
6. ISRIB 4.5 h

Supplemental Figure 3

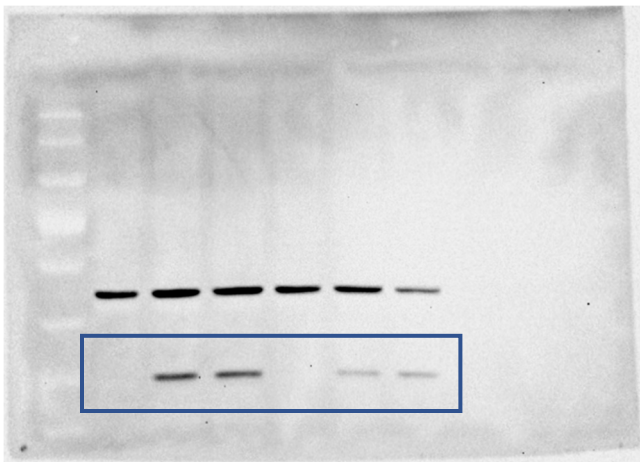
Immunoblots from figure 6

PERK

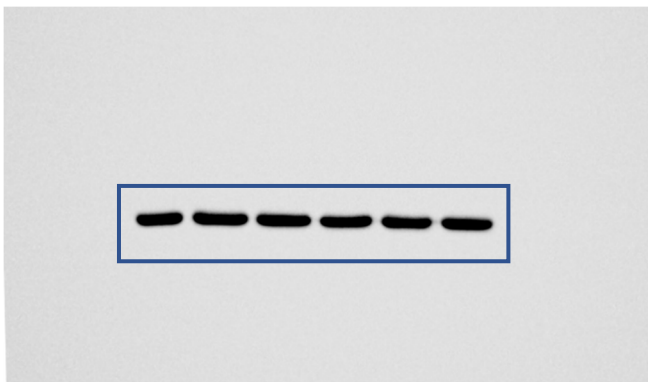
1 2 3 4 5 6



CHOP



GAPDH



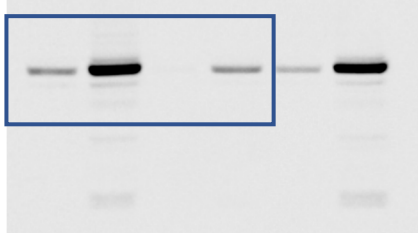
1. Cre-ERTM (-) Untreated
2. Cre-ERTM (-) Thapsigargin 1 μ M, 4 h
3. Cre-ERTM (-) Tunicamycin 5 μ M, 4 h
4. Cre-ERTM (+) Untreated
5. Cre-ERTM (+) Thapsigargin 1 μ M, 4 h
6. Cre-ERTM (+) Tunicamycin 5 μ M, 4 h

Supplemental Figure 4

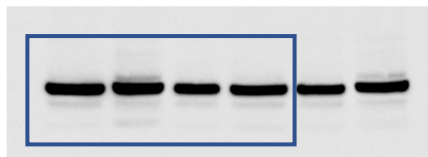
Immunoblots from figure 7

P-STAT3

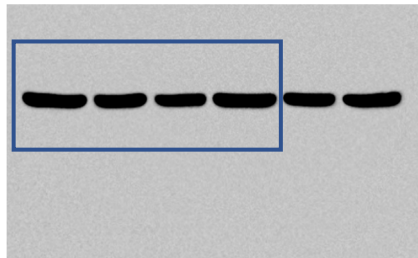
1 2 3 4



STAT3



GAPDH



1. Untreated
2. Oncostatin M 2.5 ng/ml, 30 min
3. AZD1480 2 μ M, 1 h
4. AZD1480 30 min pre + OSM 30 min