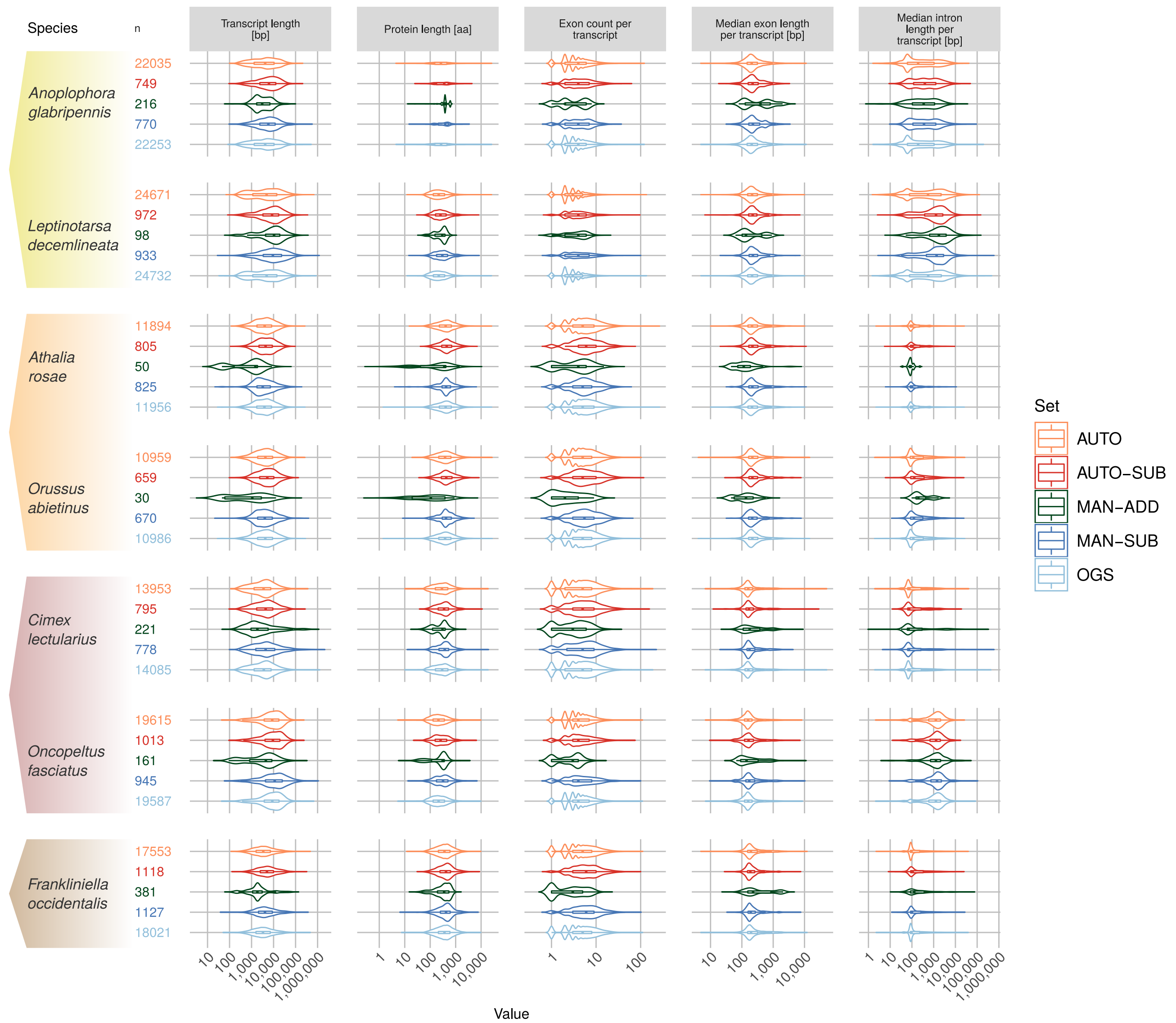
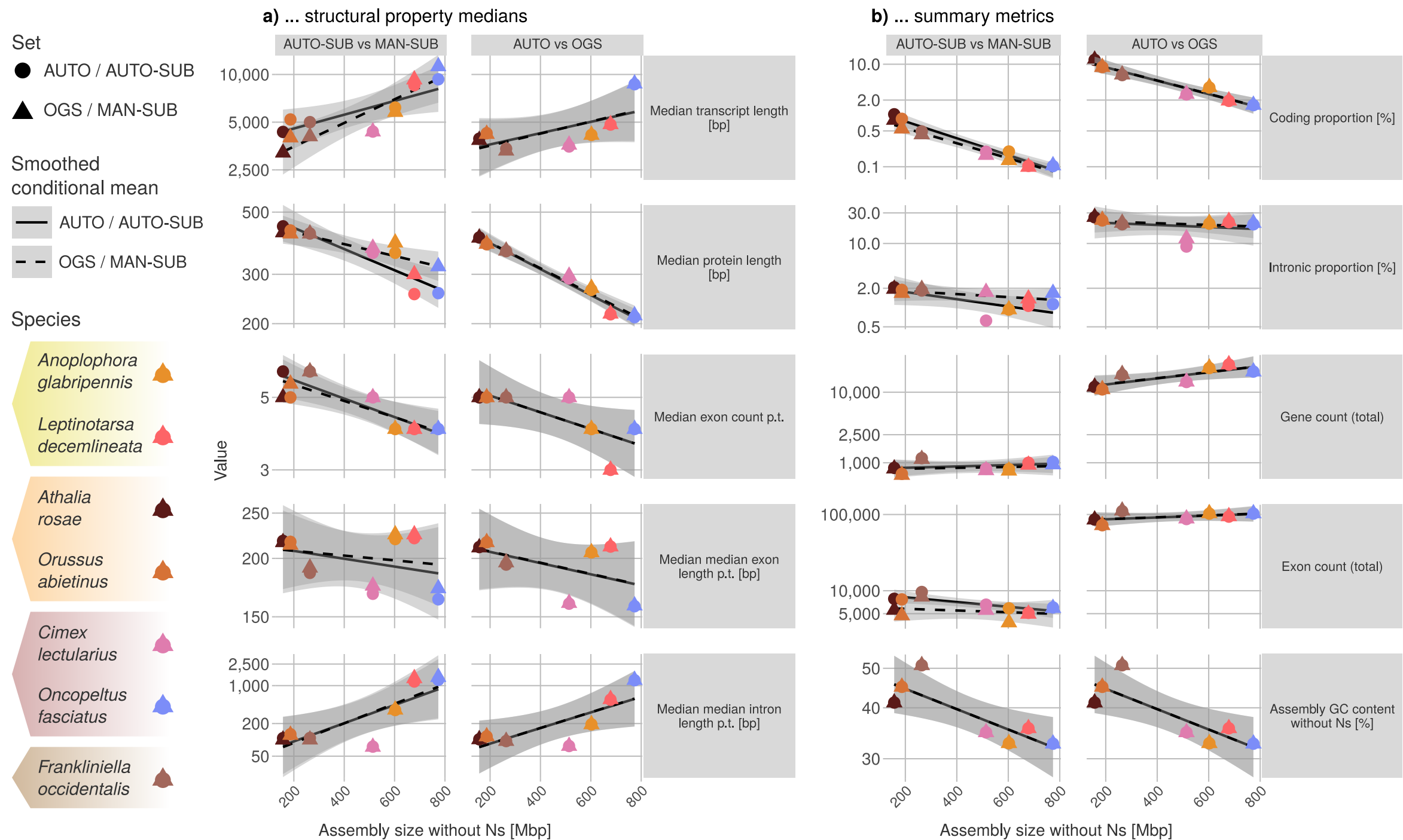


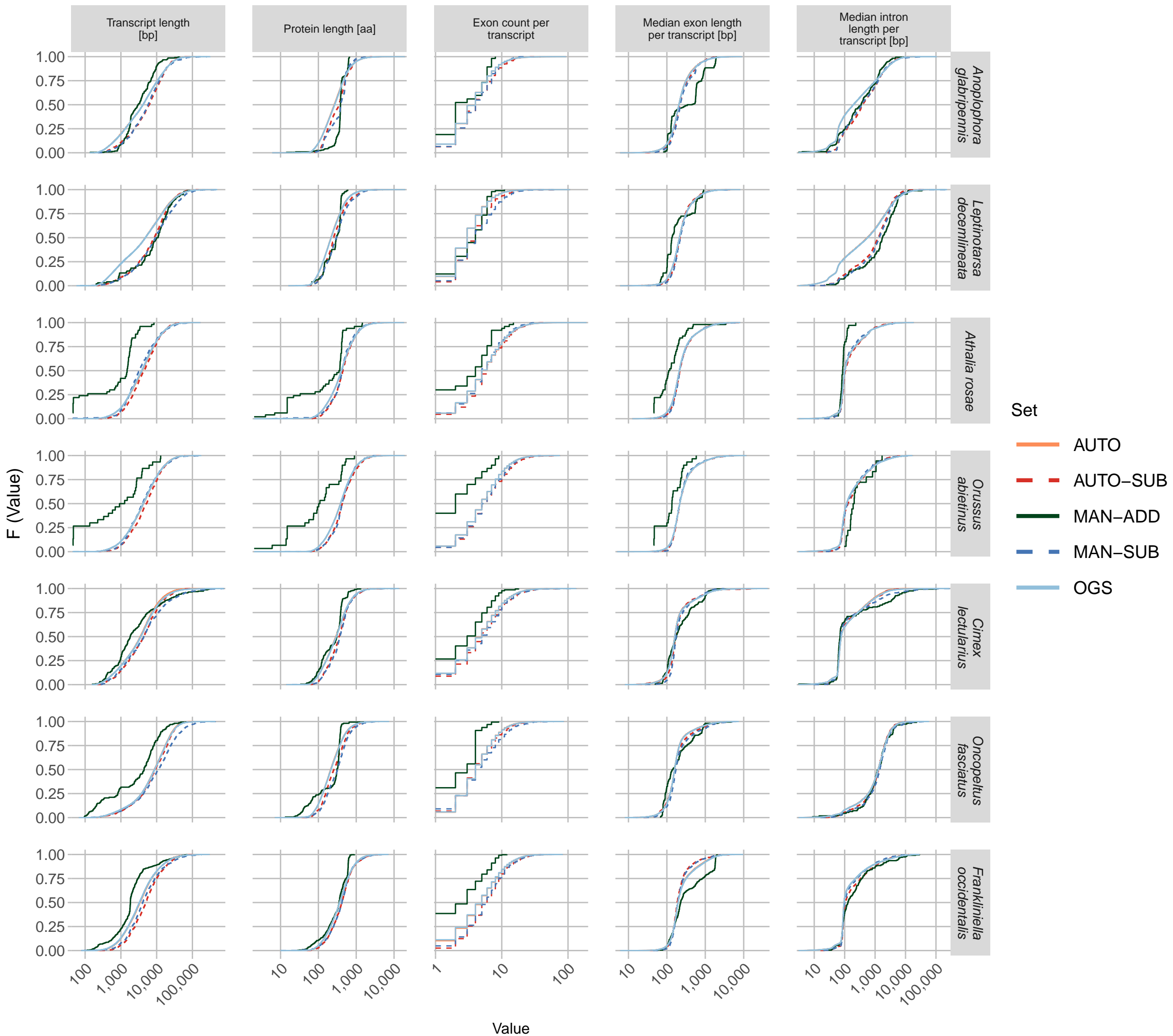
Supplementary Figure SF1: Gene structural property distributions of all sets (without outliers)



Supplementary Figure SF2: Comparison of all sets regarding correlations of assembly size with...

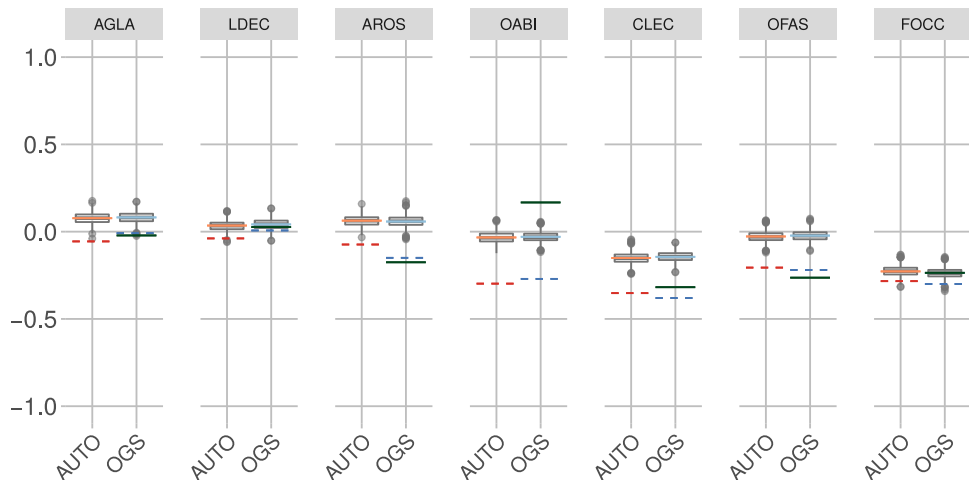


Supplementary Figure SF3: Empirical cumulative distribution functions of all sets

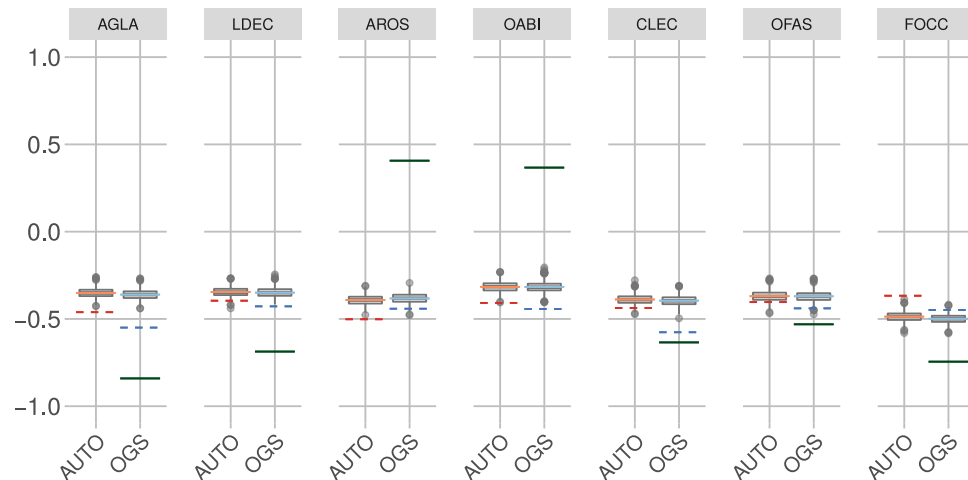


Supplementary Figure SF4: Confidence intervals established by jackknifing

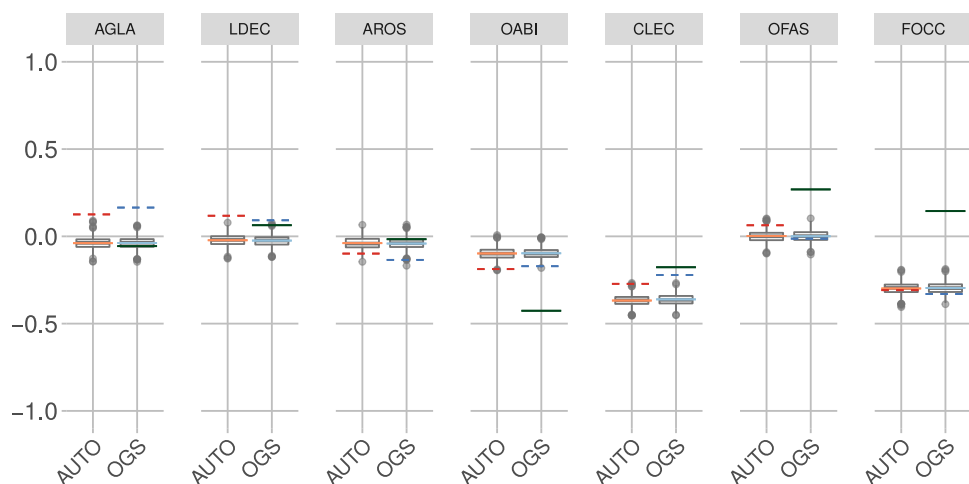
a) Median exon GC content vs. exon count



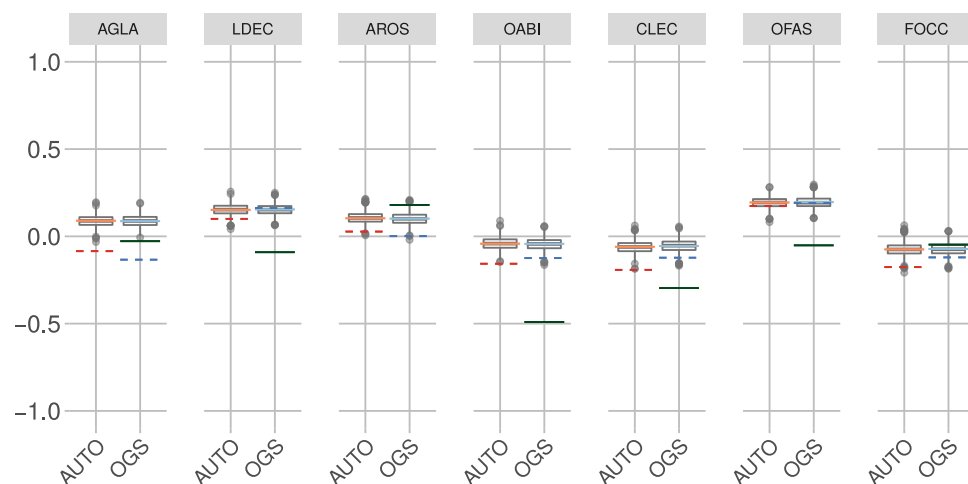
b) Median exon length vs. exon count



c) Median intron GC content vs. intron count



d) Median intron length vs. intron count



Sampled set

Correlation coefficient of set

— AUTO

- - - AUTO-SUB

— MAN-ADD

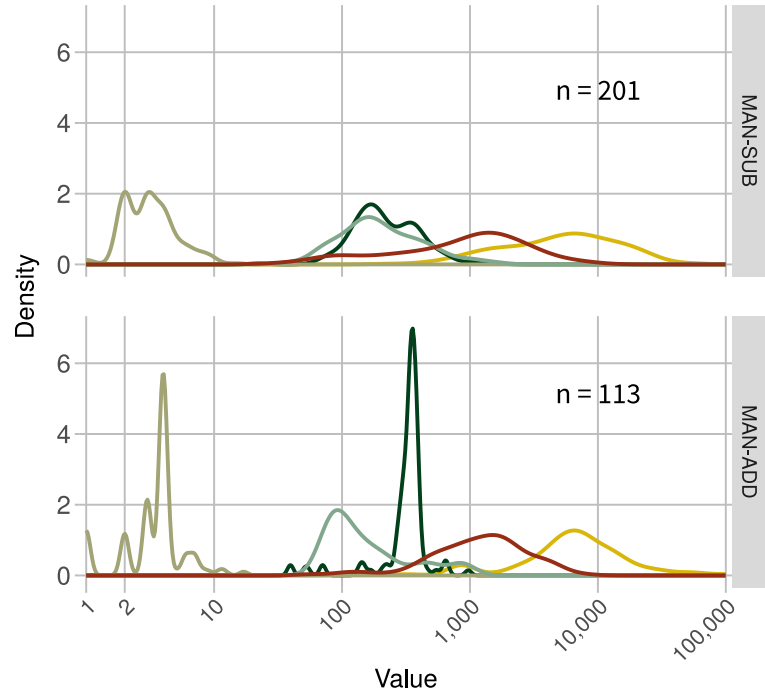
- - - MAN-SUB

— OGS

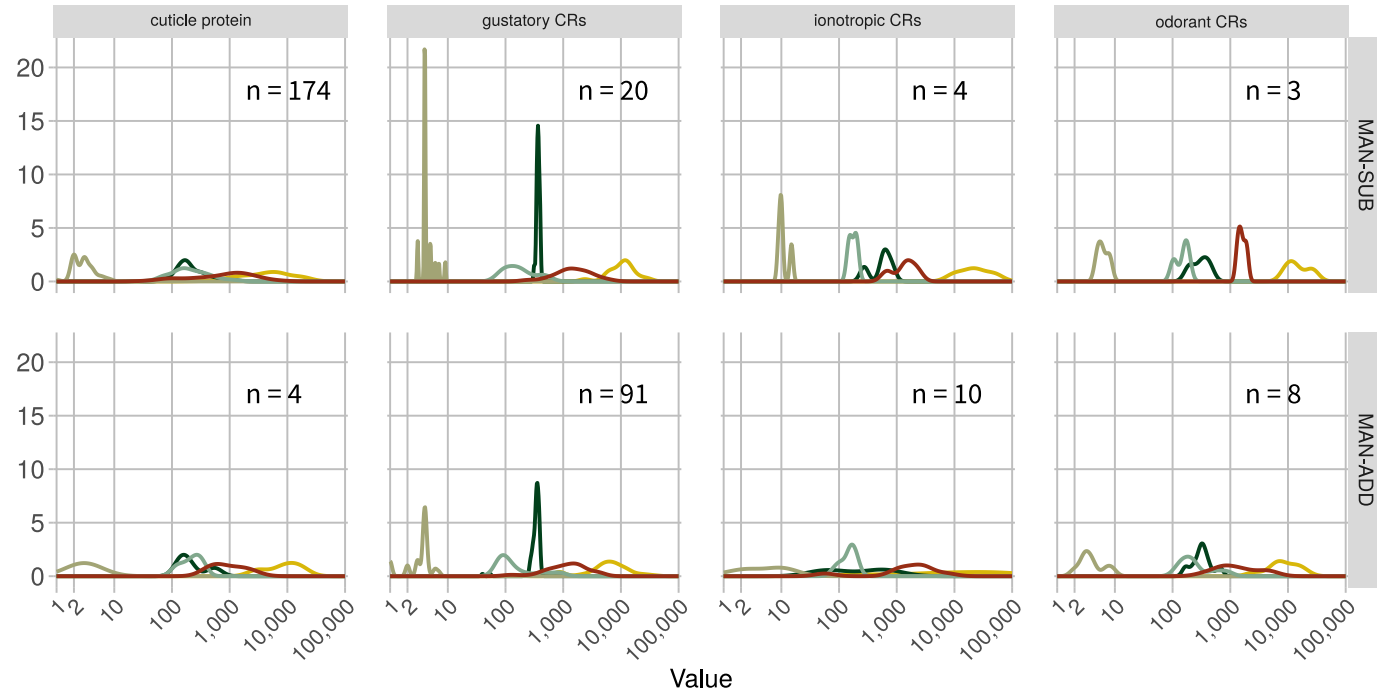
▭ Boxplots: Correlation coefficients of 1000 samples of approx. 1000 gene models, randomly drawn from respective set (AUTO or OGS)

Supplementary Figure SF5: Gene structural property distributions of cuticle proteins (CPs) and chemoreceptors (CRs) of *O. fasciatus*

a) CPs and CRs of MAN-SUB / MAN-ADD



b) CPs and CRs of MAN-SUB / MAN-ADD split by class



c) Subsets (incl. CPs, CRs, and the rest)

