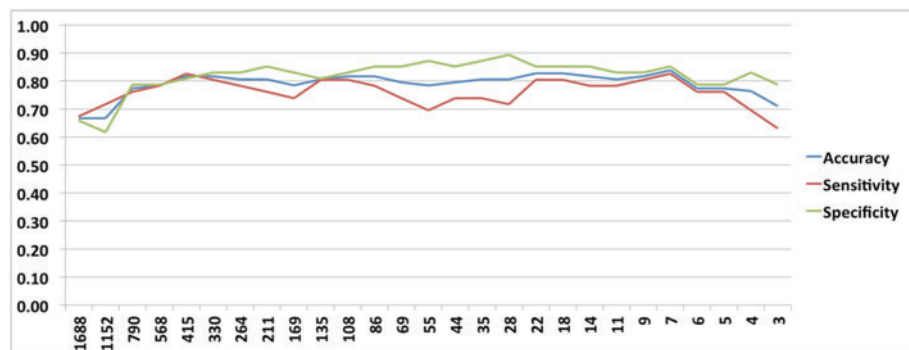


**SUPPLEMENTARY FIG. S6.** (A) Most informative fcMRI variables from analysis 3a, using Harvard-Oxford ROIs. For better visibility, only the top 20 variables are shown. (B) ROI participations of the top 100 fcMRI features from analysis 3a by network.

# of Variables	Accuracy	Sensitivity	Specificity
1688	0.67	0.67	0.66
1152	0.67	0.72	0.62
790	0.77	0.76	0.79
568	0.78	0.78	0.79
415	0.82	0.83	0.81
330	0.82	0.80	0.83
264	0.81	0.78	0.83
211	0.81	0.76	0.85
169	0.78	0.74	0.83
135	0.81	0.80	0.81
108	0.82	0.80	0.83
86	0.82	0.78	0.85
69	0.80	0.74	0.85
55	0.78	0.70	0.87
44	0.80	0.74	0.85
35	0.81	0.74	0.87
28	0.81	0.72	0.89
22	0.83	0.80	0.85
18	0.83	0.80	0.85
14	0.82	0.78	0.85
11	0.81	0.78	0.83
9	0.82	0.80	0.83
7	0.84	0.83	0.85
6	0.77	0.76	0.79
5	0.77	0.76	0.79
4	0.76	0.70	0.83
3	0.71	0.63	0.79



**SUPPLEMENTARY FIG. S7.** Accuracy, sensitivity, and specificity rates for each CRF dimension reduction in analysis 3b, using fcMRI variables based on Harvard-Oxford ROIs. The highlighted blue row shows the number of variables with the highest accuracy.