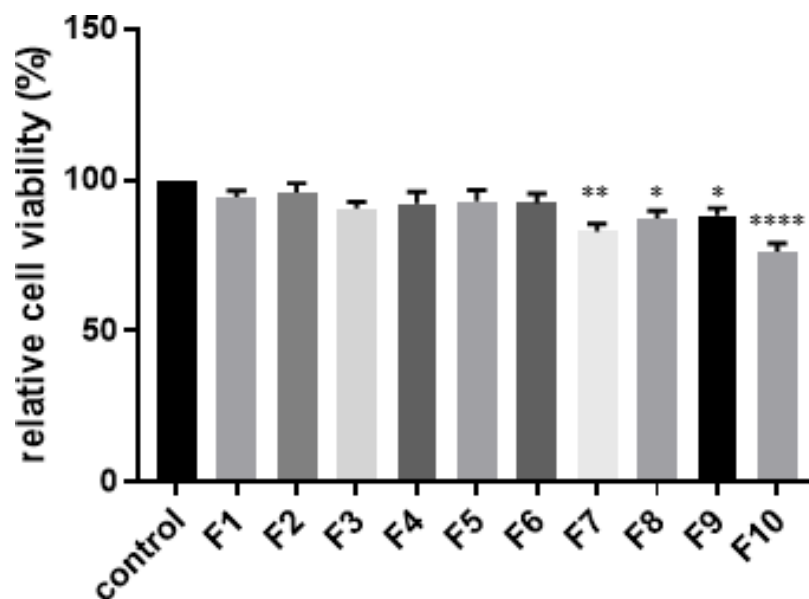
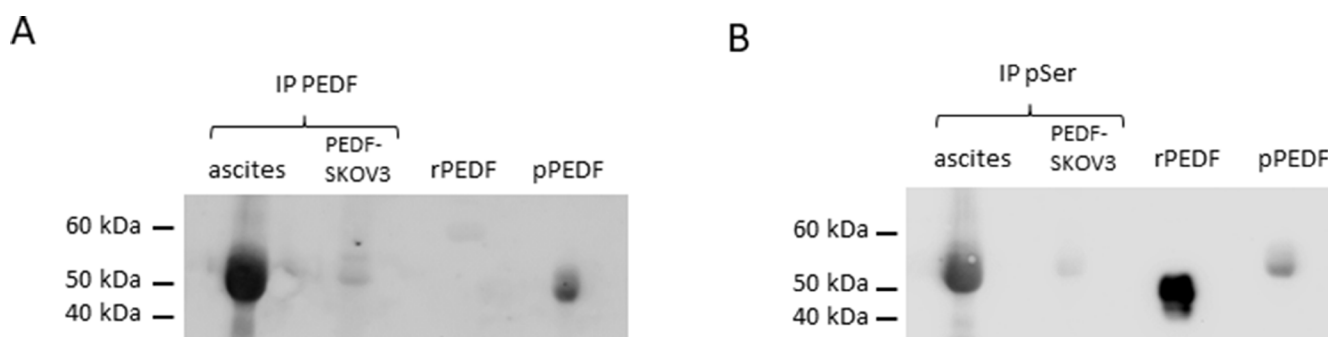


Malignant ascites: a source of therapeutic protein against ovarian cancer?

SUPPLEMENTARY MATERIALS



Supplementary Figure 1: Evaluation of ascites' fractions (F1 to F10) on SKOV3 cell viability. F1 to F6: inactive fractions; F7 to F10: active fractions compared to FBS (= control). * $p < 0.05$, ** $p < 0.005$, **** $p < 0.00001$ (one way ANOVA test).



Supplementary Figure 2: Phosphorylation of serine residue of PEDF. Ascites or PEDF-SKOV3 total proteins were immunoprecipitated with either anti-PEDF antibodies (A) or anti-Phosphoserine antibodies (B). Immunoprecipitation products, rPEDF and pPEDF were immunoblotted with either anti-Phosphoserine antibodies (A) or anti-PEDF antibodies (B).

Supplementary Table 1: Proteins identification in ascites (A100), inactive fraction (F2) and active fraction (F10) In grey: proteins found in all samples; in dark grey: proteins found in ascites and F10. See Supplementary Table 1