

Supplementary Table 1.

Fit Indices for one to five group latent profile model

	BIC	adjusted BIC	BLRT	loglikelihood	entropy
# Groups			Primary Caregiver		
1	23719.85	23719.85		-11822.02	
2	22541.00	22480.67	1223.07, p<0.001	-11210.49	0.90
3	22194.16	22111.62	391.07, p<0.001	-11014.96	0.92
4	21981.05	21876.30	257.32, p<0.001	-10886.30	0.93
5	21842.40	21715.42	182.87, p<0.001	-10794.86	0.93
			Alternate Caregiver		
1	12619.88	12581.82		-6275.58	
2	12059.32	11999.06	600.65, p<0.001	-5975.25	0.96
3	11837.14	11754.68	262.26, p<0.001	-5844.12	0.94
4	11683.48	11578.82	193.75, p<0.001	-5747.25	0.94
5	11593.03	11593.03	130.54, p<0.001	-5681.98	0.95
			Teacher		
1	19976.57	19938.48		-9950.99	
2	19231.48	19171.17	788.60, p<0.001	-9556.70	0.88
3	18970.58	18888.05	304.40, p<0.001	-9404.50	0.92
4	18822.20	18717.46	191.88, p<0.001	-9308.56	0.90
5	18709.01	18582.04	156.70, p<0.001	-9230.21	0.92

Supplementary Table 2.

Mean subscale T-scores for each group and by reporter

	Anxious/ Depressed	Depressed/ Withdrawn	Somatic Complaints	Rule- breaking	Aggression	Attentional Problems
Groups	Primary Caregiver					
Low Problems	52.06	53.78	53.41	52.44	52.43	54.15
Internalizing 'only'	67.09	67.65	64.68	57.60	60.69	63.75
Externalizing 'only'	56.01	59.56	56.95	64.40	68.28	64.93
Co-occurring	73.12	74.47	68.06	70.51	80.59	77.79
	Alternate Caregiver					
Low Problems	51.77	53.68	53.27	52.06	52.61	53.37
Internalizing 'only'	64.63	64.24	62.90	53.84	58.26	58.34
Externalizing 'only'	54.47	58.15	54.12	64.05	65.43	62.35
Co-occurring	72.91	74.61	71.62	67.52	76.43	77.57
	Teacher					
Low Problems	52.66	54.09	51.68	52.47	52.22	51.51
Internalizing 'only'	60.63	67.75	60.92	57.08	56.71	58.01
Externalizing 'only'	55.93	56.02	54.53	64.46	64.36	56.24
Co-occurring	67.14	67.40	34.79	73.99	79.38	60.12

Supplementary Table 3.

Path coefficients for effects on adolescents' problem behavior

	Primary Caregiver (<i>n</i> = 679)			Alternate Caregiver (<i>n</i> = 670)			Teacher (<i>n</i> = 677)		
	CO vs. Low	CO vs. INT	CO vs. EXT	CO vs. Low	CO vs. INT	CO vs. EXT	CO vs. Low	CO vs. INT	CO vs. EXT
FCU	0.13(0.13)	0.13(0.18)	0.05(0.20)	0.22(0.25)	0.40(0.29)	0.24(0.25)	-0.01(0.20)	-0.13(0.22)	0.05(0.25)
Mom Dep 3	-0.21(0.15)	-0.36(0.20)†	-0.51(0.21)*	-0.50(0.29)†	-0.41(0.37)	-0.69(0.24)*	0.23(0.23)	0.29(0.26)	0.09(0.23)
Mom Dep 7	-0.32(0.15)*	-0.07(0.22)	-0.06(0.22)	-0.04(0.31)	-0.25(0.41)	0.22(0.34)	-0.52(0.18)*	-0.34(0.21)	-0.24(0.24)
PBS 3	0.01(0.15)	0.21(0.20)	0.02(0.22)	0.12(0.31)	0.19(0.39)	0.03(0.33)	0.71(0.18)**	0.79(0.20)**	0.89(0.17)**
PBS 7	0.17(0.16)	0.37(0.20)†	0.03(0.23)	0.52(0.31)†	0.49(0.37)	0.25(0.42)	-0.01(0.27)	-0.06(0.30)	-0.35(0.31)
Gender	-0.07(0.14)	0.07(0.19)	-0.22(0.21)	-0.02(0.25)	0.22(0.30)	-0.04(0.28)	-0.03(0.18)	0.12(0.21)	0.09(0.23)
Race	-0.15(0.13)	-0.02(0.18)	-0.24(0.19)	-0.39(0.24)	-0.33(0.31)	-0.55(0.28)*	0.29(0.19)	0.34(0.22)	-0.20(0.29)
Income	0.20(0.15)	0.25(0.21)	0.09(0.23)	0.01(0.26)	-0.17(0.35)	-0.18(0.29)	-0.07(0.18)	-0.01(0.21)	-0.14(0.21)
Urbanicity	-0.17(0.14)	-0.26(0.19)	-0.31(0.20)	0.34(0.25)	0.09(0.30)	0.14(0.28)	0.05(0.17)	0.33(0.20)†	0.26(0.22)
PC INT	-0.44(0.17)*	-0.21(0.25)	-0.63(0.22)*	-0.44(0.36)	-0.03(0.47)	-0.26(0.40)	0.45(0.21)*	0.35(0.26)	0.46(0.27)†
PC EXT	-0.36(0.13)*	-0.28(0.19)	0.05(0.21)	0.22(0.31)	0.19(0.37)	0.53(0.27)*	-0.49(0.19)*	-0.39(0.23)†	-0.48(0.27)†
	--	Low vs. INT	Low vs. EXT	--	Low vs. INT	Low vs. EXT	--	Low vs. INT	Low vs. EXT
FCU	--	-0.05(0.14)	-0.18(0.16)	--	0.22(0.26)	0.02(0.21)	--	-0.26(0.27)	0.08(0.16)
Mom Dep 3	--	-0.13(0.18)	-0.31(0.18)†	--	0.23(0.31)	-0.25(0.27)	--	0.15(0.20)	-0.03(0.20)
Mom Dep 7		0.51(0.15)*	0.53(0.15)**		-0.30(0.40)	0.37(0.24)		0.41(0.32)	0.47(0.18)*
PBS 3	--	0.30(0.16)†	0.02(0.19)	--	0.08(0.30)	-0.13(0.22)	--	0.16(0.36)	0.03(0.18)
PBS 7		0.22(0.16)	-0.29(0.18)†		-0.15(0.32)	-0.40(0.24)†		-0.12(0.35)	-0.42(0.17)*
Gender	--	0.24(0.14)†	-0.17(0.16)	--	0.36(0.27)	-0.04(0.20)	--	0.34(0.29)	0.14(0.16)
Race	--	0.26(0.14)†	-0.04(0.17)	--	0.18(0.27)	-0.21(0.19)	--	0.09(0.31)	-0.67(0.12)**
Income	--	-0.02(0.14)	-0.26(0.17)	--	-0.26(0.32)	-0.26(0.20)	--	0.14(0.32)	-0.08(0.16)
Urbanicity	--	-0.06(0.15)	-0.11(0.16)	--	-0.45(0.24)†	-0.31(0.19)	--	0.64(0.21)**	0.24(0.15)
PC INT	--	0.55(0.15)**	-0.05(0.19)	--	0.70(0.26)*	0.28(0.25)	--	-0.24(0.38)	-0.11(0.19)
PC EXT	--	0.27(0.16)†	0.75(0.15)**	--	-0.10(0.28)	0.44(0.23)†	--	0.23(0.33)	0.13(0.19)

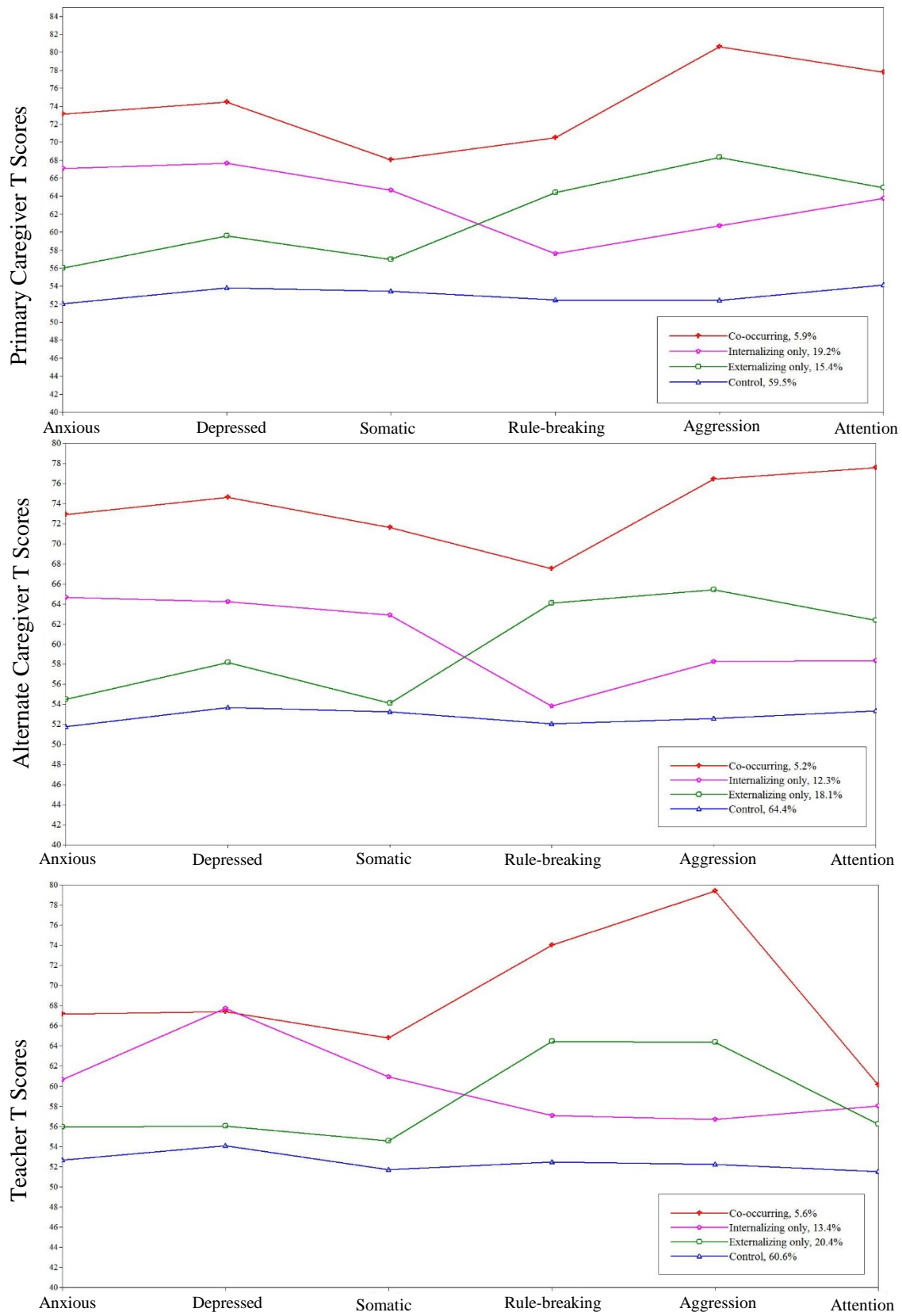
Notes. ** $p < 0.001$, * $p < 0.05$, † $p < 0.10$. Standardized coefficients and standard errors shown. Mom Dep: Maternal depression. PBS: Positive Behavior Support. CO: Co-occurring. INT: Internalizing only. Ext: Externalizing only. Low: Low Problems. PC: Primary Caregiver. FCU (Family Check-Up): 0=Control, 1=Intervention. Gender: 0=male, 1=female. Race: 1=Caucasian, 0=Other. Urbanicity: 1=rural, 2=suburban, 3=urban. Higher scores refer to higher levels of continuous variables.

Supplementary Table 4.

Path coefficients for effects on age 7 mediators

	Mom Dep 7	PBS 7
FCU	0.03(0.04)	-0.06(0.05)
Gender	0.07(0.04)†	0.01(0.05)
Race	0.06(0.04)	-0.01(0.05)
Income	-0.02(0.04)	0.07(0.04)
Urbanicity	0.05(0.04)	-0.05(0.05)
Mom Dep 3	0.48(0.04)**	--
PBS 3	--	0.31(0.05)**

Notes. ** $p < 0.001$, * $p < 0.05$, † $p < 0.10$. Standardized coefficients and standard errors shown. Mom Dep: Maternal depression. PBS: Positive Behavior Support. Results presented for PC model ($n = 679$), as results from AC and teacher models were virtually identical. FCU (Family Check-Up): 0=Control, 1=Intervention. Gender: 0=male, 1=female. Race: 1=Caucasian, 0=Other. Urbanicity: 1=rural, 2=suburban, 3=urban. Higher scores refer to higher levels of continuous variables.



Supplementary Figure 1. Latent profiles by reporter. Primary caregiver latent profile: $n = 554$.

Alternate caregiver latent profile: $n = 307$. Teacher latent profile: $n = 500$.