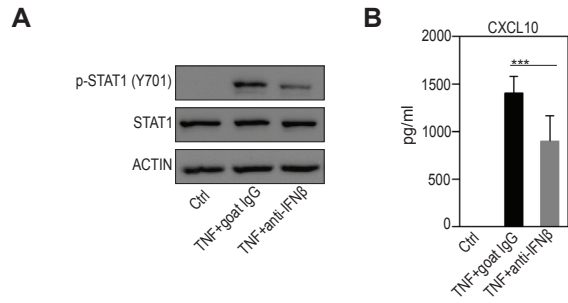


## Supplementary Figure 2.



### Supplementary Figure 2.

**A. and B.** FLS were stimulated with TNF for three (A.) or twentyfour hours (B.) in the presence of a neutralizing antibody to IFN $\beta$  (goat IgG, 50  $\mu$ g/ml) or a non-specific goat IgG antibody (50  $\mu$ g/ml).

**A.** Western blots of total and phosphorylated STAT1 expression in RA-FLS. Representative western blots of at least four experiments are shown.

**B.** Supernatants were analyzed for CXCL10 expression by ELISA. Values are the mean $\pm$ SEM. n=8. Paired t-test. p=0.0008.