

Characteristic Chemical Markers for the Discrimination of *Radix Angelica sinensis* between Geoherb and non-Geoherb Regions by UHPLC-QTOF-MS/MS Based on Metabolomics Approach

Kaixue Zhang¹, Menglin Yan², Shu Han³, Longfei Cong², Liyao Wang¹, Liu Zhang¹, Lili Sun¹, Haiying Bai¹, Guanhua Wei¹, Hong Du³, Min Jiang², Gang Bai², Zhigang Yang^{1,*}

¹School of Pharmacy, Lanzhou University, Lanzhou 730000, China; zhangkx2018@lzu.edu.cn (K.Z.); lywang17@lzu.edu.cn (L.W.); zhangliu17@lzu.edu.cn (L.Z.); sunll2018@lzu.edu.cn (L.S.); baihy14@lzu.edu.cn (H.B.); weigh2018@lzu.edu.cn (G.W.)

²College of Pharmacy, Nankai University, State Key Laboratory of Medicinal Chemical Biology, Tianjin 300350, China; 15736875593@163.com (M.Y.); 2120181290@mail.nankai.edu.cn (L.C.); minjiang@nankai.edu.cn (M.J.); gangbai@nankai.edu.cn (G.B.)

³School of Chinese Materia Medica, Beijing University of Chinese Medicine, Beijing 100029, China; hs361015@163.com (S.H.); duhong@vip.163.com (H.D.)

* Correspondence: yangzg@lzu.edu.cn (Z.Y.); Tel.: +86-931-8915202

Table S1 Origin of the RAS samples

Sample No	origin
1	Xintian Village, Banqiao Town, Enshi City, Hubei Province
2	Xintian Village, Banqiao Town, Enshi City, Hubei Province
3	Shiyao County, Enshi City, Hubei Province
4	Shiyao County, Enshi City, Hubei Province
5	Zanzha Village, Huzhu County, Haidong City, Qinghai Province
6	Yahe Village, Huzhu County, Haidong City, Qinghai Province
7	Heer Village, Huzhu County, Haidong City, Qinghai Province
8	Yaojiagou Village, Huzhu County, Haidong City, Qinghai Province
9	Zelin Village, Huzhu County, Haidong City, Qinghai Province
10	North Hill, Huzhu County, Haidong City, Qinghai Province
11	Pingba Town, Wenshan City, Yunnan Province
12	Pingba Town, Wenshan City, Yunnan Province

13	Lijiang City, Yunnan Province
14	Pingba Town, Wenshan City, Yunnan Province
15	Sanjiacun supermarket, Lijiang City, Yunnan Province
16	Huichuan Town, Weiyuan County, Gansu Province
17	Tianjiagou Town, Weiyuan County, Gansu Province
18	Huichuan Town, Weiyuan County, Gansu Province
19	Zhuangjiahan Cooperative, Lintan County, Gansu Province
20	Zhuangjiahan Cooperative, Lintan County, Gansu Province
21	Zhuangjiahan Cooperative, Lintan County, Gansu Province
22	Lintan County, Gansu Province
23	Gannan City North Community, Lintan County, Gansu Province
24	Changchuan Town, Lintan County, Gansu Province
25	Jinzhong Town, Zhang County, Gansu Province
26	Chiba Village, Chiba Town, Longnan City, Gansu Province
27	Maying Town, Longnan City, Gansu Province
28*	Tianjiabao Village, Xizhai Town, Min County, Gansu Province
29*	Guanshang Village, Xizhai Town, Min County, Gansu Province
30*	Zhongzhai Village, Shili Town, Min County, Gansu Province
31*	Wajie Village, Shendu Town, Min County, Gansu province
32*	Maliantan Village, Weixin Town, Min County, Gansu Province
33*	Hetuo Village, Hetuo Town, Min County, Gansu Province
34*	Shangdiema Village, Qingshui Town, Min County, Gansu Province
35*	Tianjiabao Village, Xizhai Town, Min County, Gansu Province
36*	Zhongzhai Village, Shili Town, Min County, Gansu Province
37*	Maliantan Village, Weixin Town, Min County, Gansu Province
38*	Hetuo Village, Hetuo Town, Min County, Gansu Province
39*	Guanshang Village, Xizhai Town, Min County, Gansu Province
40*	Liujiagou Village, Puma Town, Min County, Gansu Province

*: represents RAS samples from geoherb region.

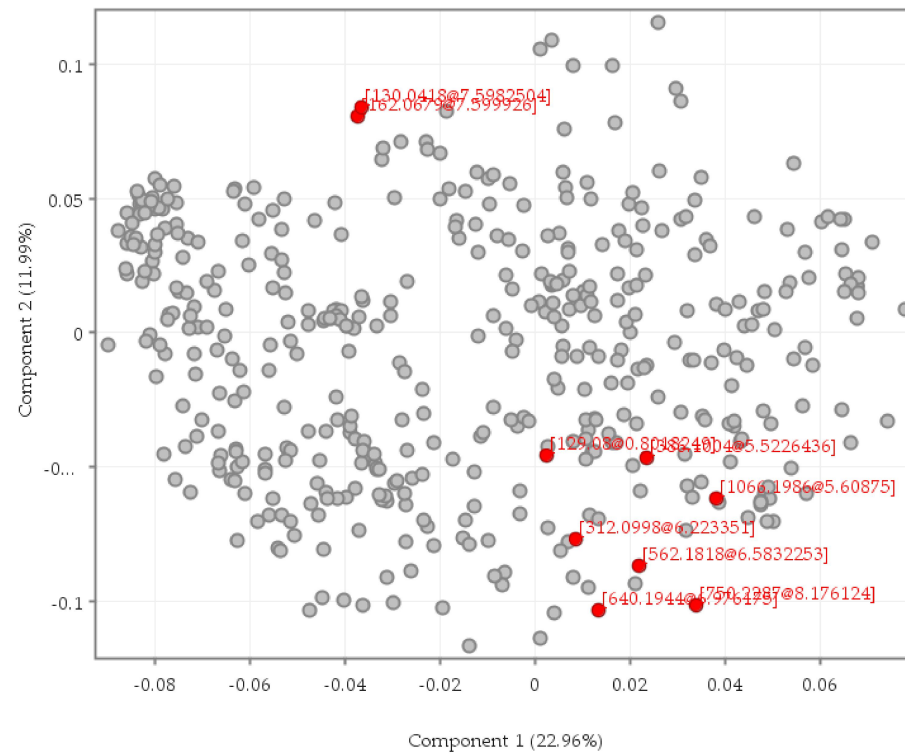


Figure S1 The PCA loadings, highlighting the markers **M1-M9**

Figure S2 Extracted ion chromatogram at m/z 387.1074 (positive mode) of RAS from geoh herbs (a) and non-geoh herbs (b).

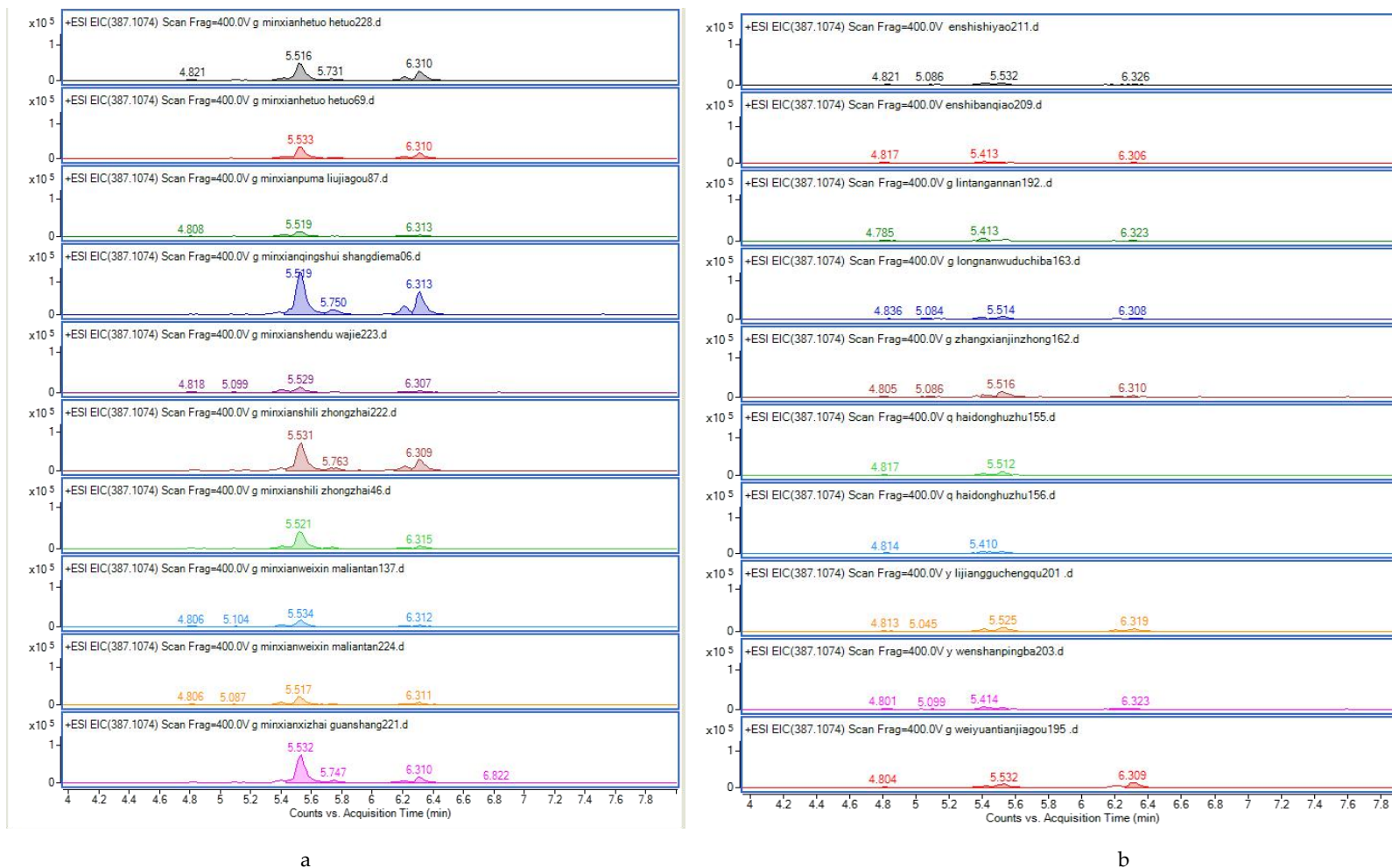


Figure S3 The MS/MS spectra of compounds detected in RAS.

