

OMTM, Volume 15

Supplemental Information

Preclinical Proof-of-Concept, Analytical Development, and Commercial Scale Production of Lentiviral Vector in Adherent Cells

Hanna M. Leinonen, Eevi M. Lipponen, Anniina J. Valkama, Heidi Hynynen, Igor Oruetxebarria, Vesa Turkki, Venla Olsson, Jere Kurkipuro, Haritha Samaranayake, Ann-Marie Määttä, Nigel R. Parker, Seppo Ylä-Herttuala, and Hanna P. Lesch

Supplemental data

Supplemental figures and legends

Figure S1. Glucose and lactate concentrations in iCELLis Nano and iCELLis 500 runs.

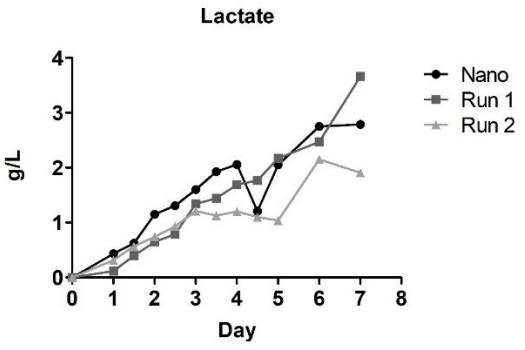
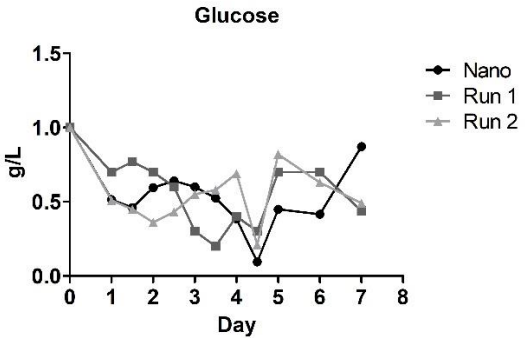


Figure S2. Tumor implantation coordinates.

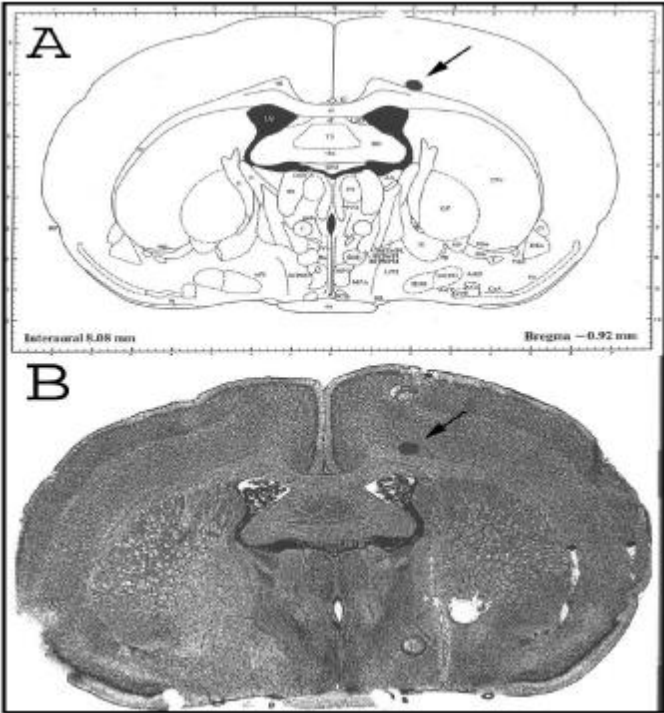


Table S1. Variations in potency assay. The effect of GCV on LV-TK transduced cells shown as average ICE50 values, Sd and CV% of all tests (inter assay), individual assays (intra assay) and operators, and average and sd of ICE50 intra assay and between operators of. One assay contains four separate plates, n=3 per plate.

| | | Average ICE 50 (MOI) | Sd | CV% |
|--------------------|---------|-------------------------------------|-----------|------------|
| Inter assay | | 0.06 | 0.04 | 67.71 |
| Intra assay | Assay 1 | 0.03 | 0.02 | 65.01 |
| | Assay 2 | 0.07 | 0.03 | 37.48 |
| | Assay 3 | 0.1 | 0.03 | 32.20 |
| | Assay 4 | 0.03 | 0.01 | 51.54 |
| Operator | 1 | 0.09 | 0.03 | 36.85 |
| | 2 | 0.03 | 0.01 | 51.53568 |
| | 3 | 0.03 | 0.02 | 65.00752 |