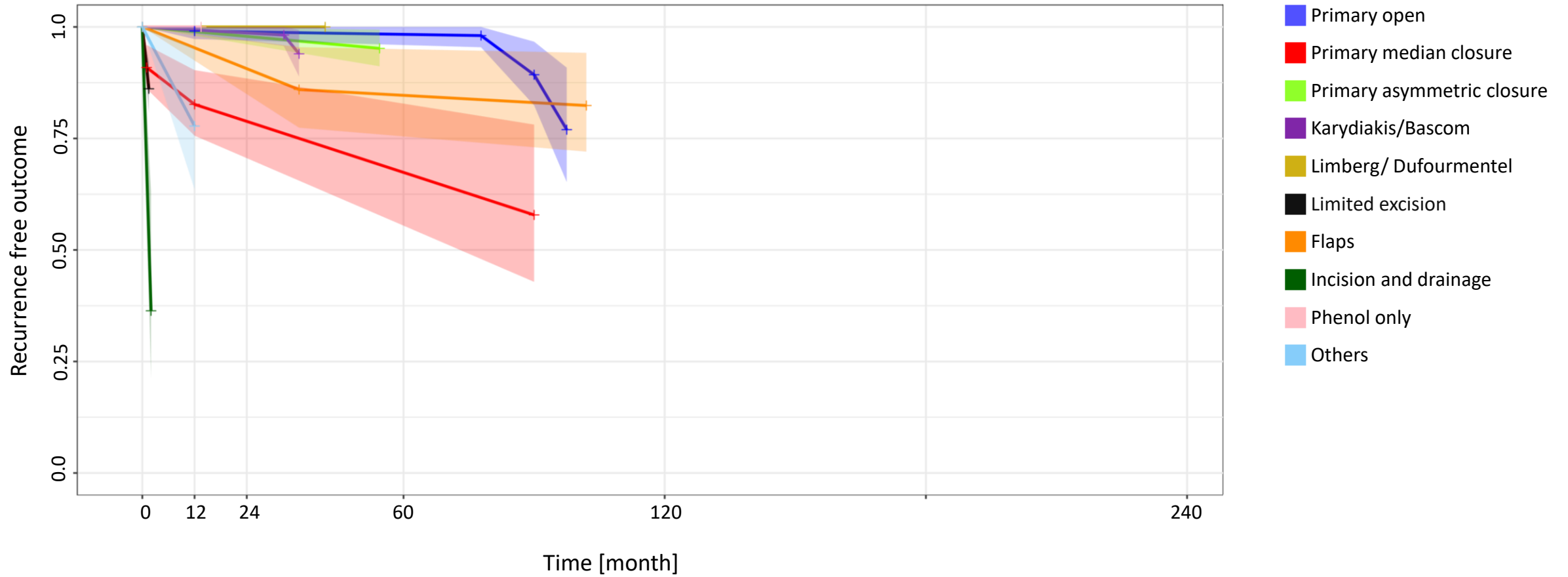


Doll D, Orlik A, Maier K, Kauf P, Schmid M, Diekmann M, Vogt AP,
Stauffer VK, Luedi MM:

*Impact of geography and surgical approach on
recurrence in global pilonidal sinus disease*

Supplemental Figures and Tables

Australia/New Zealand

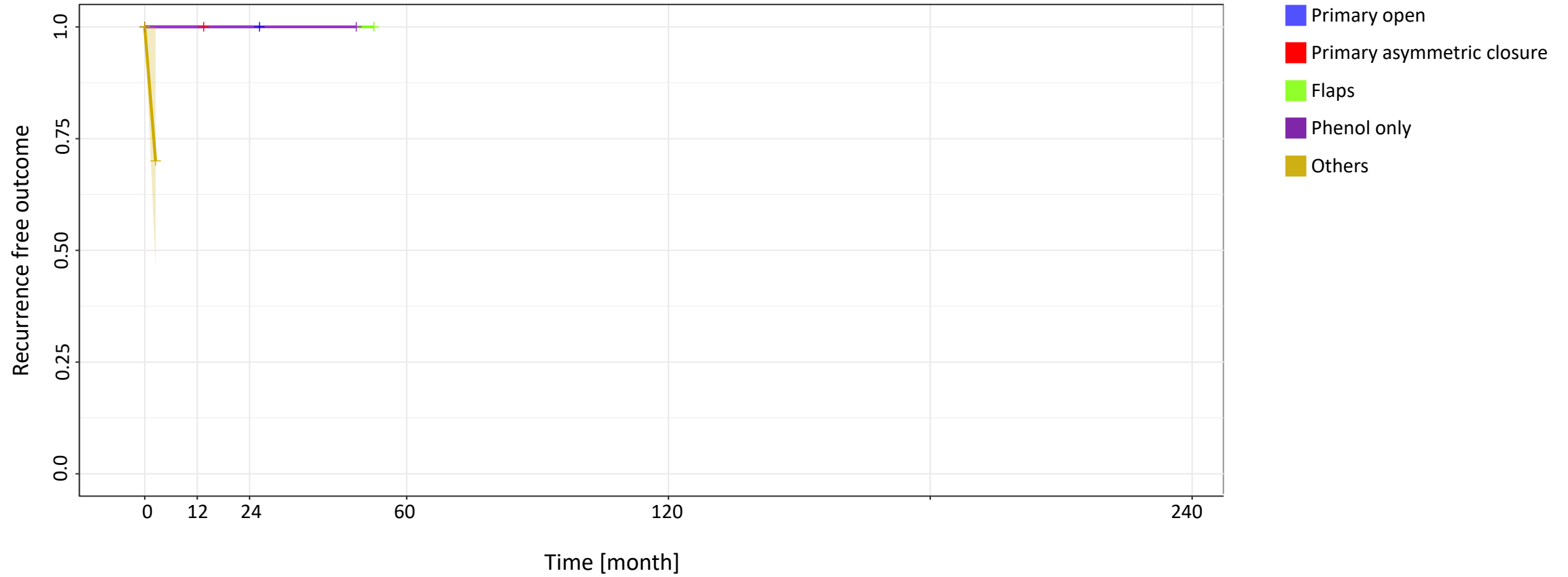


Supplemental Figure 1. Australia / New Zealand: Kaplan-Meier estimator depicting recurrence-free outcome of the study population as a function of follow-up time. The data used include all available studies from Italy. 95% confidence intervals are shown by shaded lines. Number of patients and CI 95% data included in the analysis are shown in Supplemental Table 1. Shaded lines indicate 95% confidence intervals

Supplemental Table 1: Recurrence rates in percent as a function of follow-up time of patients and all available surgical approaches applied in Australia and New Zealand. Number of patients included in the analysis and the according 95% CI are indicated at 0, 12, 24, 60, and 120 months. All used citations for the analysis are shown in the right column.

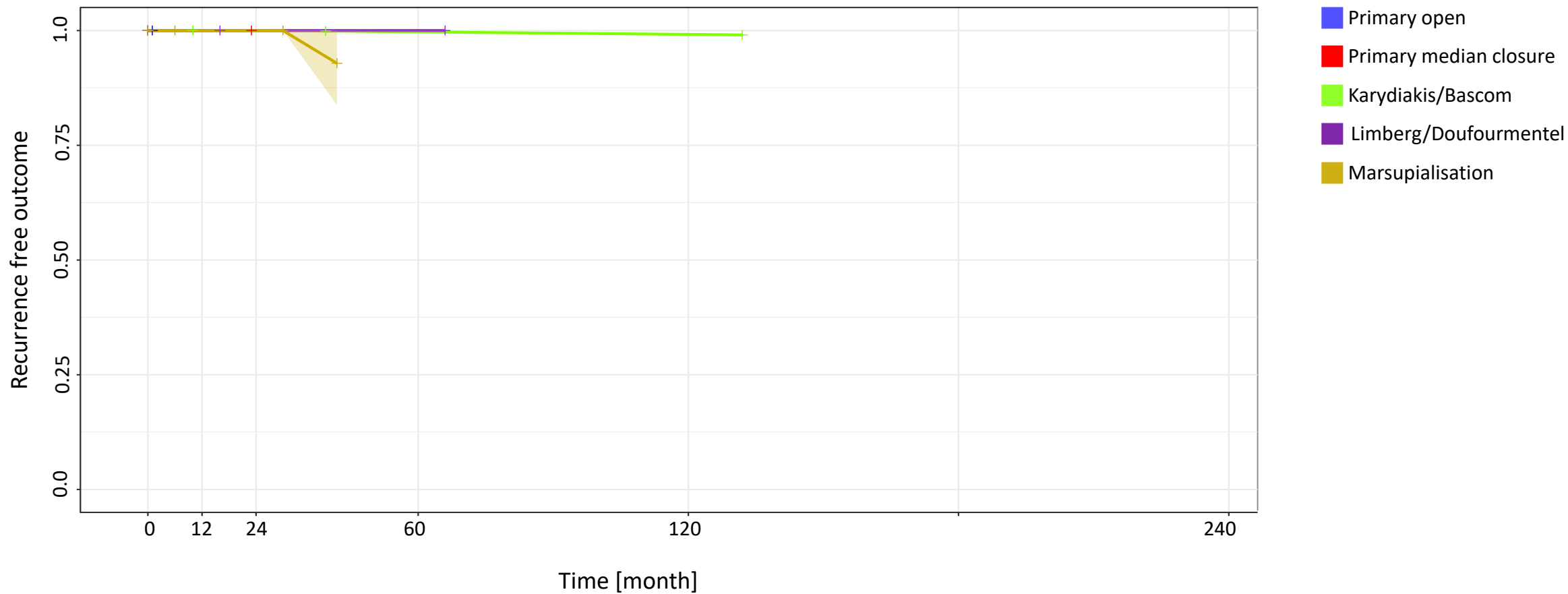
Australia + New Zealand	12 months		24 months		60 months		120 months		Citations
Surgical method (total patients included)	RR in % (95% CI)	Nr. at risk	RR in % (95% CI)	Nr. at risk	RR in % (95% CI)	Nr. at risk	RR in % (95% CI)	Nr. at risk	
Primary open (108)	0.9 (0.0-2.8)	108	1.1* (0.0-3.1)	106*	1.7* (0.0-4.2)	101*	NA	NA	114,624,625
Primary median closure (132)	17.4 (8.3-26.4)	77	21.2* (8.8-33.6)	68*	32.6* (10.3-55.0)	42*	NA	NA	205,624,625
Primary asymmetric closure (104)	1.1* (0.1-2.0)	104*	2.1* (0.2-4.1)	104*	NA	NA	NA	NA	242
Karydiakis/Bascom (110)	0.7* (0.0-1.6)	110*	1.3* (0.0-3.3)	110*	NA	NA	NA	NA	270,626
Limberg/Dufourmentel (29)	0.0* (0.0-0.0)	29*	0.0* (0.0-0.0)	29*	NA	NA	NA	NA	627
Limited excision (137)	NA	NA	NA	NA	NA	NA	NA	NA	205
Flaps (57)	4.7* (1.1-8.2)	57*	9.4* (2.2-16.5)	57*	15.3* (3.6-27.1)	45*	NA	NA	460,628
Incision and drainage (22)	NA	NA	NA	NA	NA	NA	NA	NA	205
Phenol only (20)	0.0* (0.0-0.0)	20*	NA	NA	NA	NA	NA	NA	629
Others (27)	22.2 (1.6-42.8)	27	NA	NA	NA	NA	NA	NA	625

Asia



Supplemental Figure 2. Asia: Kaplan-Meier estimator depicting recurrence-free outcome of the study population as a function of follow-up time. The data used include all available studies from Italy. 95% confidence intervals are shown by shaded lines. Number of patients and CI 95% data included in the analysis are shown in Supplemental Table 2. Shaded lines indicate 95% confidence intervals

Greece



Supplemental Figure 3. Greece: Kaplan-Meier estimator depicting recurrence-free outcome of the study population as a function of follow-up time. The data used include all available studies from Italy. 95% confidence intervals are shown by shaded lines. Number of patients and CI 95% data included in the analysis are shown in Supplemental Table 3.

Supplemental Table 3: Recurrence rates in percent as a function of follow-up time of patients and all available surgical approaches applied in Greece. Number of patients included in the analysis and the according 95% CI are indicated at 0, 12, 24, 60, and 120 months. All used citations for the analysis are shown in the right column									
Greece	12 months		24 months		60 months		120 months		Citations
Surgical method (total patients included)	RR in % (95% CI)	Nr. at risk	RR in % (95% CI)	Nr. at risk	RR in % (95% CI)	Nr. at risk	RR in % (95% CI)	Nr. at risk	
Primary open (52)	NA	NA	NA	NA	NA	NA	NA	NA	40
Primary median closure (43)	0.0* (0.0-0.0)	43*	NA	NA	NA	NA	NA	NA	631
Karydiakis/Bascom (7240)	0.0* (0.0-0.0)	7238*	0.1* (0.0-0.1)	7229*	0.3* (0.2-0.4)	7067*	0.9* (0.6-1.1)	NA	278,632,633
Limberg/Dufourmentel (142)	0.0* (0.0-0.0)	142*	0.0* (0.0-0.0)	137*	0.0* (0.0-0.0)	114*	NA	NA	364,634
Marsupialisation (77)	0.0* (0.0-0.0)	77	0.0* (0.0-0.0)	55*	NA	NA	NA	NA	408,635