

Fatty Acid (FA)	Smoflipid® *			Intralipid® *			Omegaven® **		
	% of total lipid	mean %	[FA], mM	% of total lipid	mean %	[FA], mM	% of total lipid	mean %	[FA], mM
oleic acid	23-25	24.0	169.9	19-30	24.5	173.4	4-11	7.5	26.5
linoleic acid	14-25	19.5	139.0	44-62	53.0	378.0	1.5	1.5	5.3
caprylic acid	13-24	18.5	256.6						
capric acid	7-12	9.5	110.3						
stearic acid	5-15	10.0	70.3	1.5-5.5	3.5	24.6			
palmitic acid	1.5-4	2.75	21.5	7-14	10.5	81.9	4-12	8.0	31.2
linolenic acid	1.5-3.5	2.5	18.0	4-11	7.5	53.9	1.1	1.1	4.0
palmitoleic acid							4-10	7.0	27.5
myristic acid							2-7	4.5	19.7
arachidonic acid							0.2-2	1.1	3.6
EPA	1-3.5	2.25	14.7				13-26	19.5	64.4
DHA	1-3.5	2.25	13.7				14-27	20.5	62.4

1

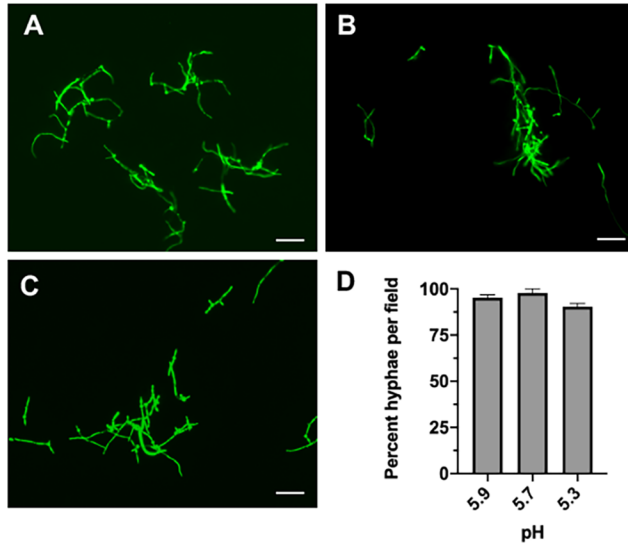
2 **Supplemental Table 1. Percent fatty acid content of total lipid and fatty acid molarity in**

3 **clinical emulsion products. * Denotes a total lipid content of 20%. ** Denotes a total lipid content**

4 **of 10%.**

5

6



7

8 **Supplemental Figure 1. pH alone does not explain reduced hyphal growth in Smoflipid-like**

9 **conditions.** Strain CAI4+pKE4-GFP (1×10^6 cells/mL) was inoculated into 10% Intralipid in

10 minimal medium that was **(A)** unmodified (pH 5.9), **(B)** adjusted to mimic the pH of 10% Smoflipid

11 in minimal medium (pH 5.7), or **(C)** adjusted to mimic the pH of 10% Intralipid supplemented with

12 55.1 mM capric acid in minimal medium (pH 5.3). Cells were grown at 37°C in a shaking incubator

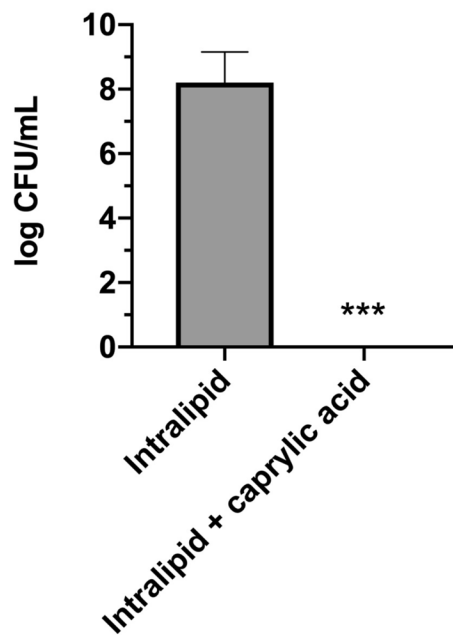
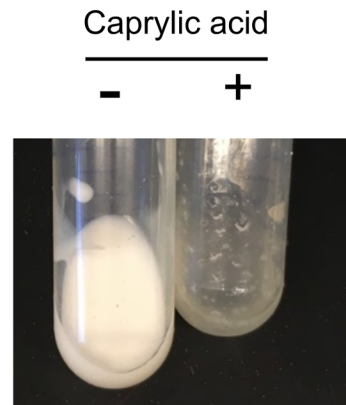
13 for 4 h. Aliquots (20 μ L) were prepared as wet mounts and imaged by fluorescence microscopy.

14 Scale bar represents 50 μ m. **(D)** Hyphal cells and total cells per field were enumerated from 15

15 random images. Percent hyphae per field was calculated and expressed as the mean. Error bars

16 represent SEM. Data is representative of independent (n=3) experiments.

17

A**B**

18

19 **Supplemental Figure 2. Caprylic acid is fungicidal but affects lipid emulsion formulation.**

20 **(A)** *C. albicans* was grown planktonically overnight in minimal medium containing 10% Intralipid
21 or 10% Intralipid supplemented with 128.3 mM caprylic acid. The following day, serial dilutions
22 were plated onto YPD agar plates and CFUs enumerated after incubation. Data represents the
23 mean (n=3) colony count. Error bars represent SDs. Significance was assessed using a Mann
24 Whitney test. ***, $p < 0.001$. **(B)** Photographic image demonstrating 10% Intralipid in minimal
25 medium before (-) and after (+) addition of 128.3 mM caprylic acid.

26