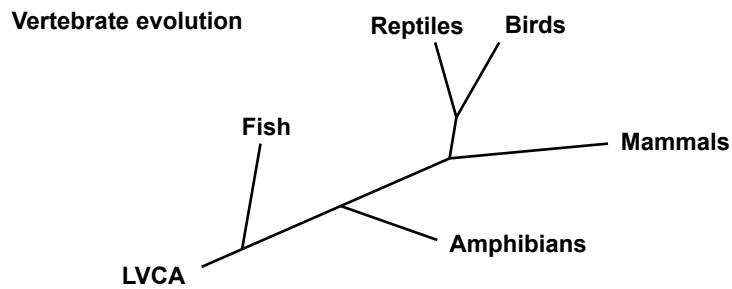


A



B

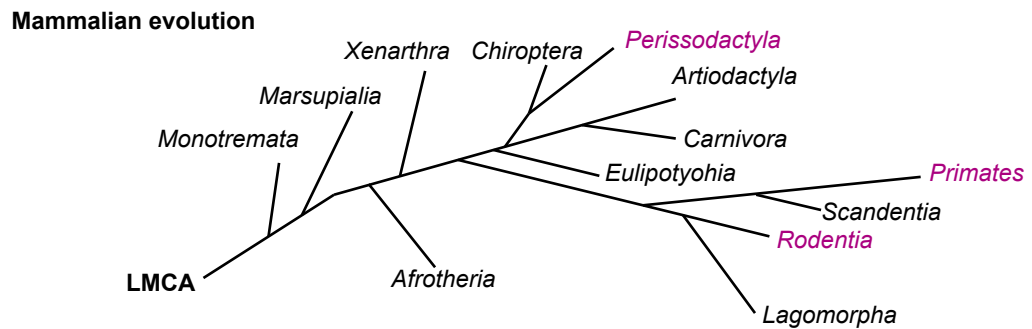


Figure S12. Evolutionary trees of vertebrate and mammalian evolution for reference

(A) Evolutionary tree of vertebrate evolution for reference. LVCA: Last Vertebrate Common Ancestor

(B) Evolutionary tree of mammalian evolution for reference. LMCA: Last Mammalian Common Ancestor. Branches indicated in purple color indicate branches in which some species have lost the cysteine homologous to human p16^{INK4A} Cys72. Note that for some branches very few sequence information is available and that it cannot be excluded that also in the branches indicated in black color species might have lost the Cys homologous to human p16^{INK4A} Cys72.

Note that evolutionary trees in (A) and (B) are not to scale.