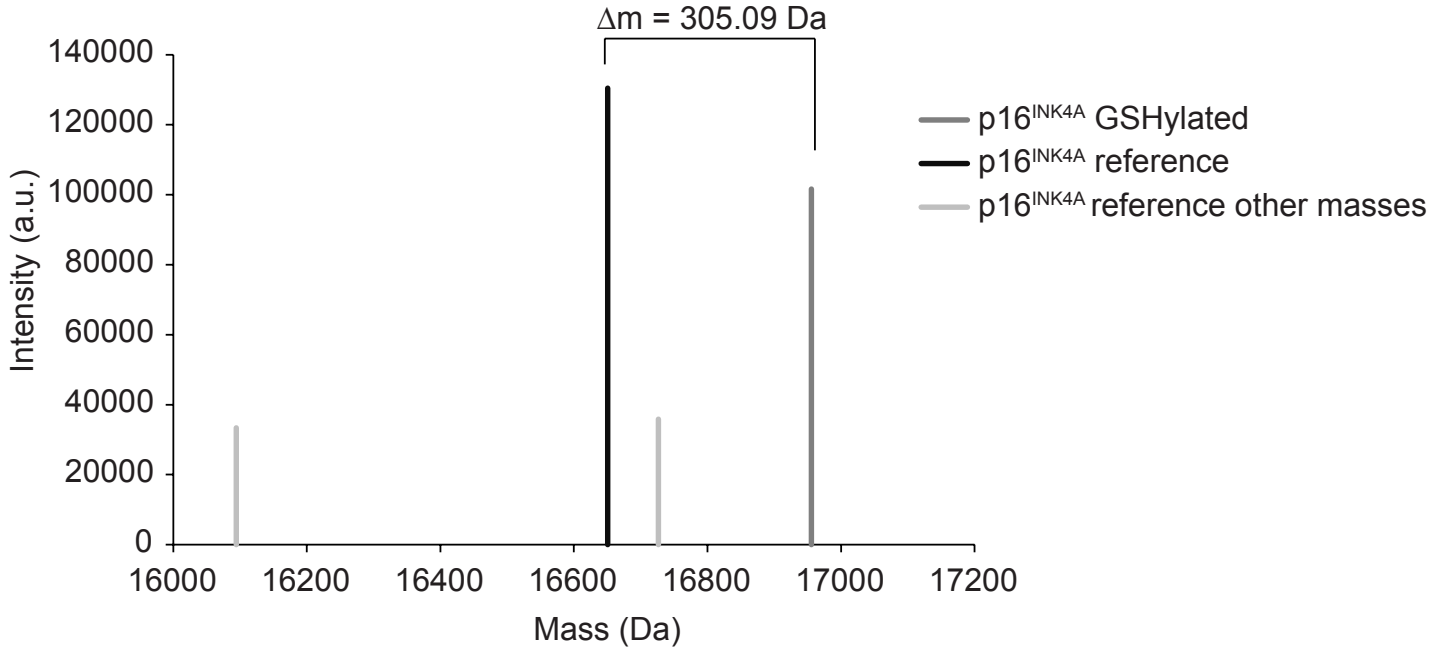


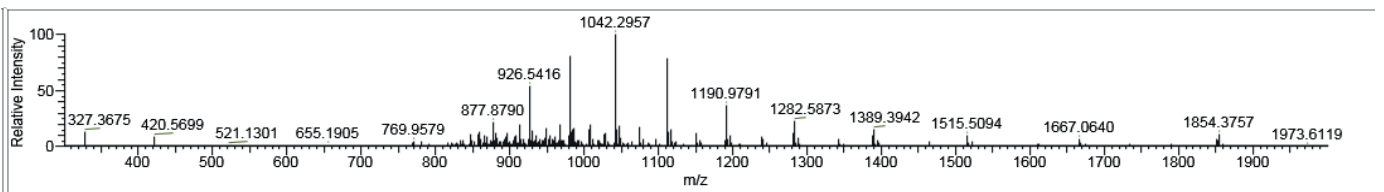
A

Intact Protein Masses

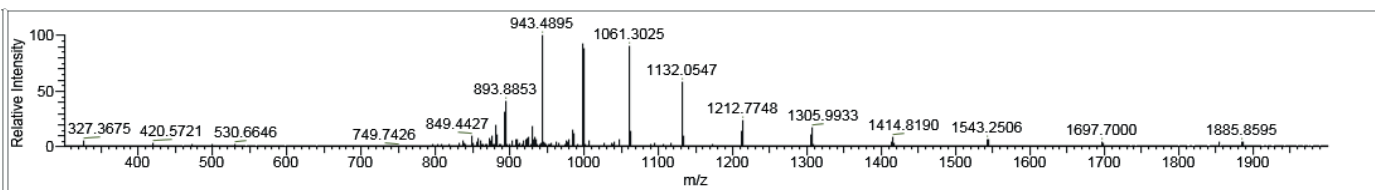


B

p16<sup>INK4A</sup> reference



p16<sup>INK4A</sup> GSHylated



**Figure S4. Mass spectrometry analysis of reduced and glutathionylated p16<sup>INK4A</sup>.**

(A) Deconvoluted mass spectra of p16<sup>INK4A</sup> treated with GSSG shows a mass-shift of 305 Da which is in agreement with the modification of p16<sup>INK4A</sup> Cys72 with disulfide-linked Glutathione (i.e. S-GSHylated p16<sup>INK4A</sup>).

(B) m/z spectra of the LC-MS analysis of recombinant p16<sup>INK4A</sup> before and after S-GSHylation. The mass-spectrometric analysis to determine whether p16<sup>INK4A</sup> was indeed S-GSHylated upon GSSG treatment was performed once.