

Supplementary Online Content

Demirci H, Demirci FY, Ciftci S, et al. Integrative exome and transcriptome analysis of conjunctival melanoma and its potential application for personalized therapy. *JAMA Ophthalmol*. Published online October 24, 2019. doi:10.1001/jamaophthalmol.2019.4237

eTable. Clinical Features, Management, and Prognosis of Conjunctival Melanoma Patients

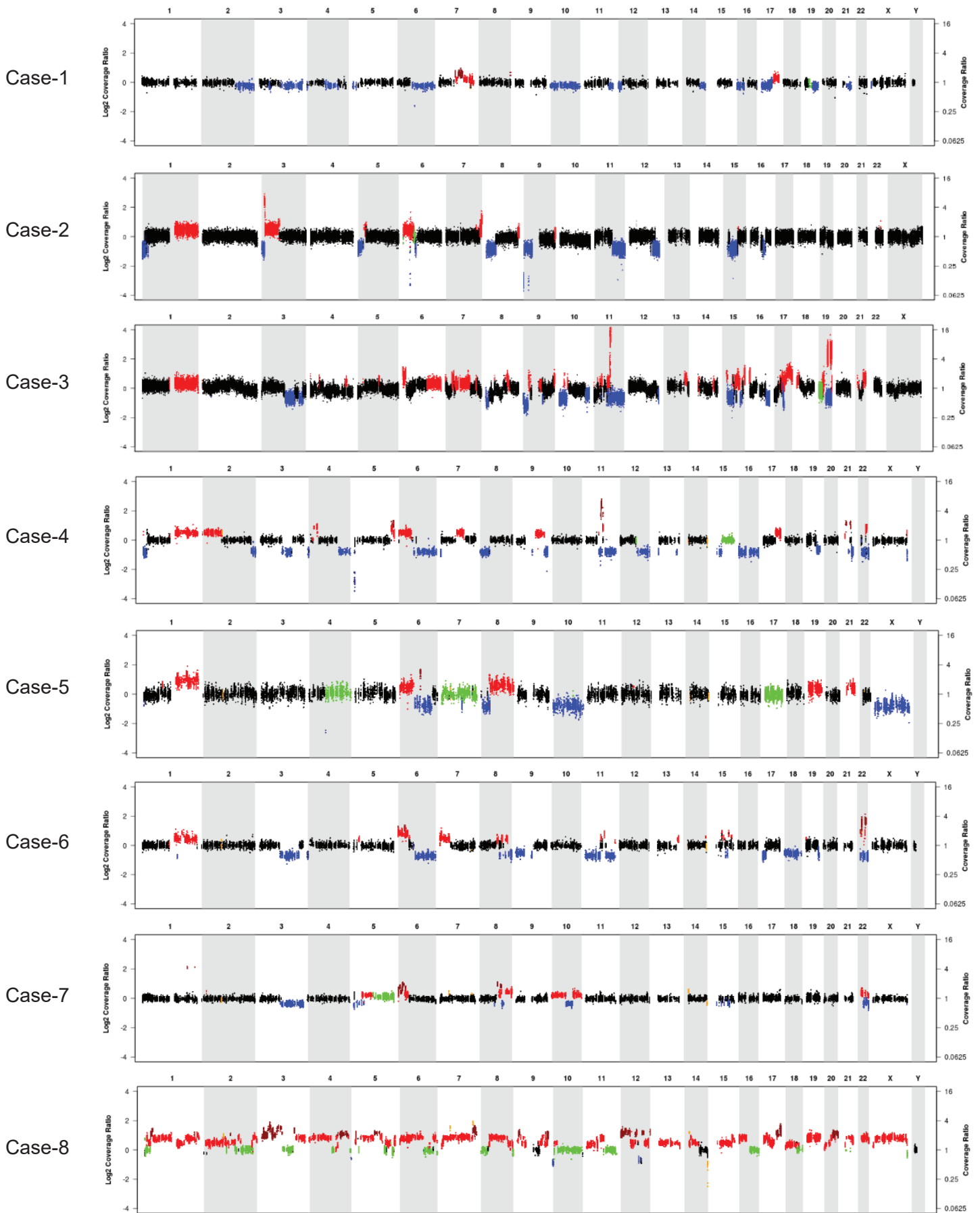
eFigure. Copy Number Plots of Conjunctival Melanomas

This supplementary material has been provided by the authors to give readers additional information about their work.

Supplementary Table. Clinical Features, Management and Prognosis of Conjunctival Melanoma Patients

Case*	Gender	Involved Eye	Tumor Location	TNM staging at presentation	Management	Follow-up (months)	Metastasis
1	Male	Left	Lower bulbar, forniceal and palpebral conjunctiva	pT2b pN0 cM0	Excisional biopsy	36	None
2	Male	Left	Lower bulbar conjunctiva	pT2d pN0 cM0	Excisional biopsy and plaque radiotherapy	30	None
3	Female	Left	Diffuse on bulbar and both palpebral conjunctiva, and anterior orbit	pT3c pN0 cM0	Exenteration	41	None
4	Female	Right	Inferior bulbar conjunctiva	pT1c pN0 cM0	Excisional biopsy	24	None
5	Female	Left	Diffuse on bulbar and both palpebral conjunctiva, and anterior orbit, lower eyelid margin	pT3c pN0 cM0	Neoadjuvant therapy with dabrafenib and trametinib, followed by excisional biopsy	13	Lung and brain
6	Male	Right	Temporal bulbar conjunctiva	pT2b pN0 cM0	Excisional biopsy and plaque radiotherapy	17	None
7	Female	Left	Temporal bulbar and forniceal conjunctiva	pT1c pN0 cM0	Excisional biopsy and plaque radiotherapy	88	None
8	Male	Left	Diffuse on bulbar, and inferior palpebral conjunctiva, and anterior orbit	pT3c pN0 cM0	Exenteration	4	Local head and neck lymph nodes and systemic metastasis

*The mean age was 68 years (median, 69 years; range, 32-89 years)



eFigure. Copy number plots of conjunctival melanomas. Gene copy number landscape was assessed by matched tumor-normal sequencing. Chromosomes are numbered above each plot. Copy-number changes are indicated by color. Black, neutral; green, copy neutral LOH; red, gain; blue, copy loss.