

Appendix S14. *Picris hieracioides* species complex similarity matrices based on the Picris-610-exon-complete (A) and -shrunk (B) and Picris-supercontig (C) data sets, and networks based on the Picris-610-exon-complete (D) and -shrunk (E) data sets (see data set information in Table 2). (A) *Picris* species complex similarity matrix based on 218 exons from the Cichorieae tribe-wide data sets after trimming of spurious sequences and removal of loci that are potentially paralogous across the tribe-wide Cichorieae data set. (B) *Picris* species complex similarity matrix based on 610 exons after trimming of spurious sequences and removal of loci that are potentially paralogous across the *Picris* data set. (C) *Picris* species complex supercontigs similarity matrix based on 576 supercontigs (exons + flanking intron regions) after trimming of spurious sequences and removal of loci that are potentially paralogous across the *Picris* data set). Percentage similarities are given in the boxes; shading corresponds to: darker = more similar, lighter = less similar. Distances between samples are higher in the supercontig data set (C) compared to the two exon data sets (A and B).

A

Picris-amalecitana_IZx3x6		95.4%	95.3%	95.8%	95.2%	95.5%	95.6%	95.6%	95.8%
Picris-nuristanica_NURx7	95.4%		97.2%	97.3%	97.2%	97.3%	97.6%	97.5%	97.6%
Picris-japonica_JPx106x1	95.3%	97.2%		96.9%	96.9%	97.2%	97.4%	97.4%	97.4%
Picris-olympica_UDx9	95.8%	97.3%	96.9%		97.5%	97.6%	97.6%	97.7%	97.6%
Picris-hieracioides_PESK	95.2%	97.2%	96.9%	97.5%		97.4%	97.4%	97.4%	97.8%
Picris-hieracioides_CZx1x3	95.5%	97.3%	97.2%	97.6%	97.4%		97.8%	98.2%	97.8%
Picris-hieracioides_PAKx2	95.6%	97.6%	97.4%	97.6%	97.4%	97.8%		97.9%	97.9%
Picris-hieracioides_LOVx1	95.6%	97.5%	97.4%	97.7%	97.4%	98.2%	97.9%		97.9%
Picris-hieracioides_MADx4	95.8%	97.6%	97.4%	97.6%	97.8%	97.8%	97.9%	97.9%	

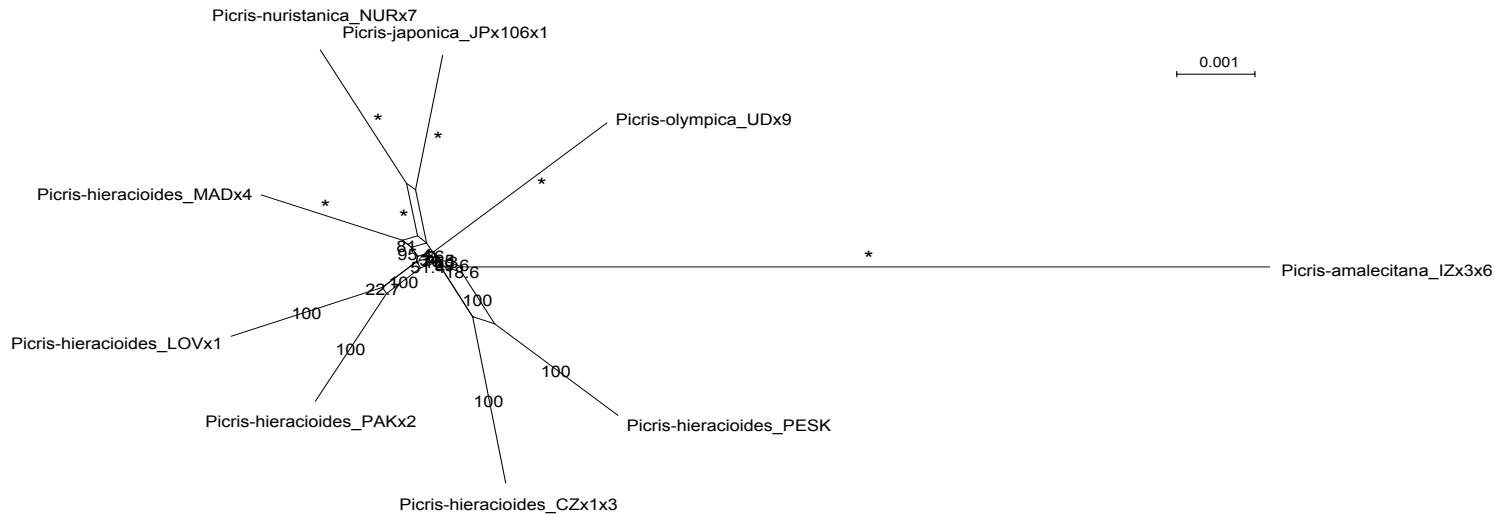
B

Picris-amalecitana_IZx3x6		96.7%	96.8%	97.0%	97.0%	96.9%	97.1%	96.9%	97.2%
Picris-nuristanica_NURx7	96.7%		98.0%	97.7%	97.7%	97.7%	98.0%	97.8%	97.8%
Picris-japonica_JPx106x1	96.8%	98.0%		97.8%	97.8%	97.8%	98.1%	97.9%	97.9%
Picris-olympica_UDx9	97.0%	97.7%	97.8%		98.1%	98.0%	98.1%	97.9%	98.1%
Picris-hieracioides_PESK	97.0%	97.7%	97.8%	98.1%		98.0%	98.1%	97.9%	98.3%
Picris-hieracioides_CZx1x3	96.9%	97.7%	97.8%	98.0%	98.0%		98.2%	98.1%	98.1%
Picris-hieracioides_PAKx2	97.1%	98.0%	98.1%	98.1%	98.1%	98.2%		98.1%	98.3%
Picris-hieracioides_LOVx1	96.9%	97.8%	97.9%	97.9%	97.9%	98.1%	98.1%		98.1%
Picris-hieracioides_MADx4	97.2%	97.8%	97.9%	98.1%	98.3%	98.1%	98.3%	98.1%	

C

Picris-amalecitana_IZx3x6		89.5%	91.1%	90.2%	90.4%	89.6%	87.8%	88.6%	91.4%
Picris-nuristanica_NURx7	89.5%		94.4%	92.7%	93.0%	92.3%	91.2%	91.8%	93.9%
Picris-japonica_JPx106x1	91.1%	94.4%		94.8%	95.4%	94.0%	91.6%	93.2%	96.6%
Picris-olympica_UDx9	90.2%	92.7%	94.8%		94.5%	93.3%	91.0%	92.7%	95.2%
Picris-hieracioides_PESK	90.4%	93.0%	95.4%	94.5%		94.4%	91.3%	92.4%	95.8%
Picris-hieracioides_CZx1x3	89.6%	92.3%	94.0%	93.3%	94.4%		91.3%	92.4%	94.2%
Picris-hieracioides_PAKx2	87.8%	91.2%	91.6%	91.0%	91.3%	91.3%		92.0%	91.4%
Picris-hieracioides_LOVx1	88.6%	91.8%	93.2%	92.7%	92.4%	92.4%	92.0%		93.2%
Picris-hieracioides_MADx4	91.4%	93.9%	96.6%	95.2%	95.8%	94.2%	91.4%	93.2%	

D



E

