

## Electronic Supplementary Material

## Proteomics Profiling of Host Cell Response via Protein Expression and Phosphorylation upon Dengue Virus Infection

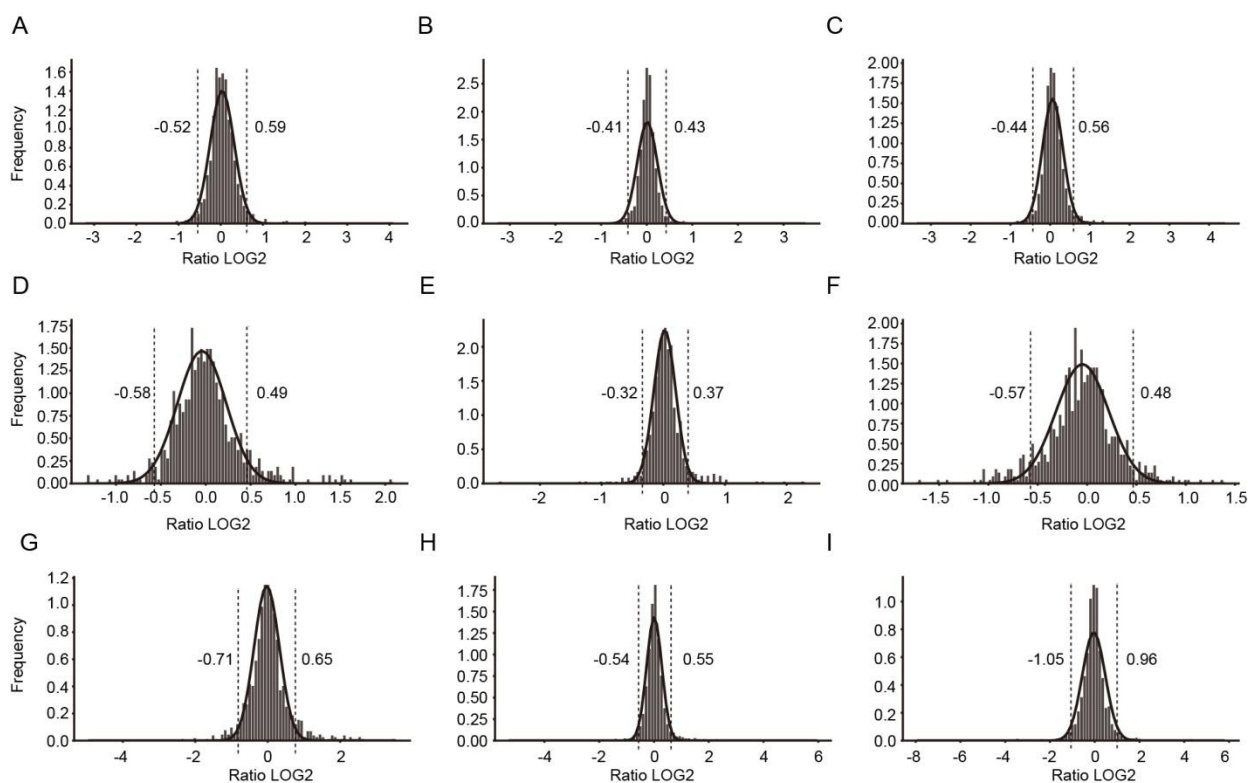
Meng Miao<sup>1</sup>, Fei Yu<sup>1,2</sup>, Danya Wang<sup>1,2</sup>, Yongjia Tong<sup>1,2</sup>, Liuting Yang<sup>1,2</sup>, Jiuyue Xu<sup>3</sup>, Yang Qiu<sup>3</sup>, Xi Zhou<sup>1,3</sup>✉, Xiaolu Zhao<sup>1,2</sup>✉

1 State Key Laboratory of Virology, College of Life Sciences, Wuhan University, Wuhan 430072, China

2 Hubei Key Laboratory of Cell Homeostasis, College of Life Sciences, Wuhan University, Wuhan 430072, China

3 Laboratory of RNA Virology, Wuhan Institute of Virology, Chinese Academy of Science, Wuhan 430071, China

Supporting information to DOI: 10.1007/s12250-019-00131-2



**Figure S1:** The Gaussian distribution of protein ratios. Gaussian distribution of protein ratios was analyzed, and proteins with ratios deviating from the mean of the normally distributed data by 1.96 SDs were considered differentially regulated. A) Biological replicate 1 of total protein, mean=0.03401, SD=0.2846 B) Biological replicate 2 of total protein, mean=0.01255, SD=0.2196 C) Biological replicate 3 of total protein, mean=0.06204, SD=0.2566 D) Biological replicate 1 of phosphoprotein, mean=-0.0434, SD=0.272 E) Biological replicate 1 of phosphoprotein, mean=0.02347, SD=0.1777 F) Biological replicate 3 of phosphoprotein, mean=-0.04749, SD=0.2678 G) Biological replicate 1 of phosphosite, mean=-0.02676, SD=0.3499 H) Biological replicate 2 of phosphosite, mean=0.00892, SD=0.2782 I) Biological replicate 3 of phosphosite, mean=-0.0492, SD=0.5125

**Table S1:** List of quantified total protein. Ratio M/L: DENV infected cell protein amount/ Mock cell protein amount. Raw files were submitted to Maxquant, 2263 proteins were quantified.

**Table S2:** List of quantified phosphoprotein. Ratio M/L: DENV infected cell protein amount/ Mock cell protein amount. Raw files were submitted to Maxquant, 799 phosphoproteins were quantified.

**Table S3:** List of quantified phosphosite Ratio M/L: DENV infected cell protein amount/ Mock cell protein amount. Raw files were submitted to Maxquant, 2440 phosphosites were quantified.

**Table S4:** List of predicted kinase and substrate. Significantly regulated phosphosites were submitted to NetwoKIN(3.0). 2.5 networkin\_score were choosed as a cut off. 225 pairs of substrate and kinase were selected out.

**Table S5:** List of gene classification. Significantly regulated total protein and phosphoprotein were submitted to Panther. Genes were distributed in 12 processes.

**Table S6:** List of GO enrichment. Significantly regulated total protein and phosphoprotein were submitted to BinGo. 23 processes were enrichment in total protein, 39 processes were enrichment in phosphoprotein.

**Table S7:** List of protein-protein interaction of total protein and phosphoprotein. Significantly regulated total protein and phosphoprotein were submitted to BinGo. Significantly regulated total protein and phosphoprotein were submitted to BinGo. 23 processes were enrichment in total protein, 39 processes were enrichment in phosphoprotein.

**Table S8:** List of overlapped proteins between this study and reference. Regulated protein and phosphoprotein data in this study were compared with host protein witch interacted with DENV/ ZIKV protein data in reference. 33 DENV infected host protein and 38 ZIKV infected host proteins overlapped in two studies.