

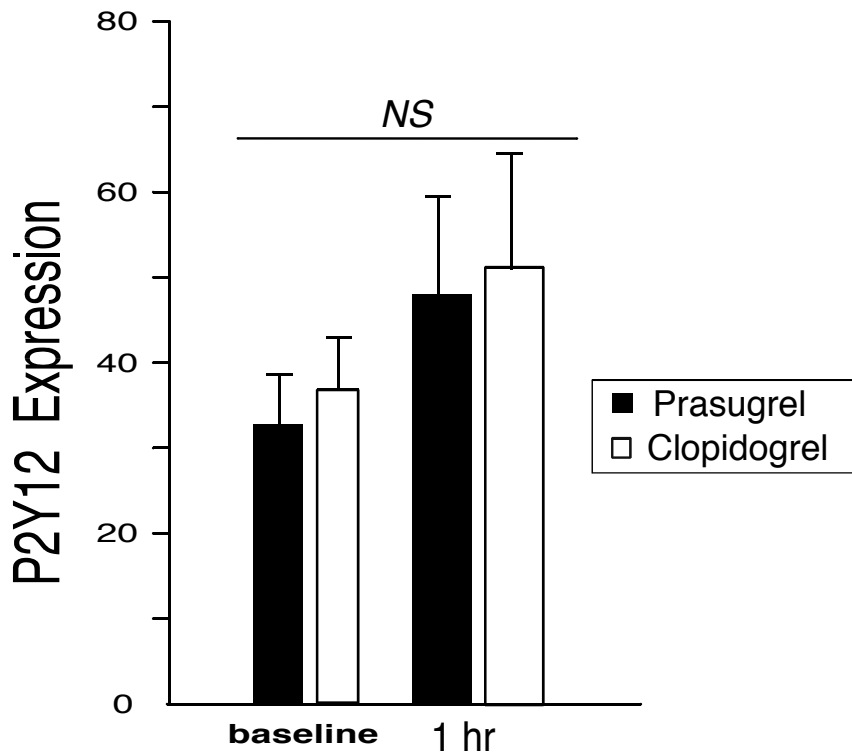
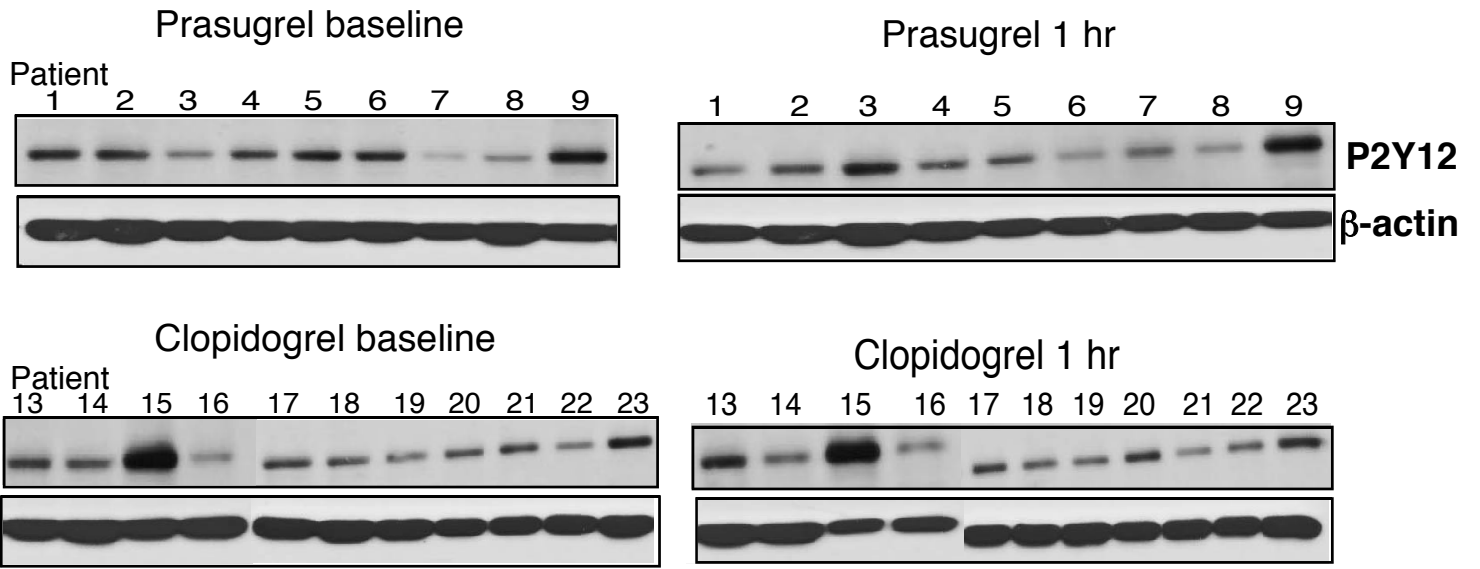
Supplemental Fig. 1

Platelet protein expression of P2Y₁₂ receptor is not affected in patients treated with either Clopidogrel and Prasugrel. Washed human platelets were collected for baseline and 1h POST-termination of the infusion. Top-western blot analysis of individual patients was probed with the antibody for P2Y₁₂ and β -actin control. Bar graph showing the relative platelet expression from the top panel of P2Y₁₂, after normalization to β -actin expression. Results are presented as means \pm SE.

Supplemental Fig. 2

Clopidogrel attenuates plasma TAT levels 16h after PCI. Median plasma levels of thrombin-antithrombin complexes (TAT) were assessed by ELISA at baseline, after 1, 2, 4 and 16h POST-termination of the infusion. ELISAs were performed in duplicate or triplicate and the mean \pm SD are shown, Prasugrel (●), Clopidogrel (○).

P2Y12 Expression



Supplemental Fig. 2

