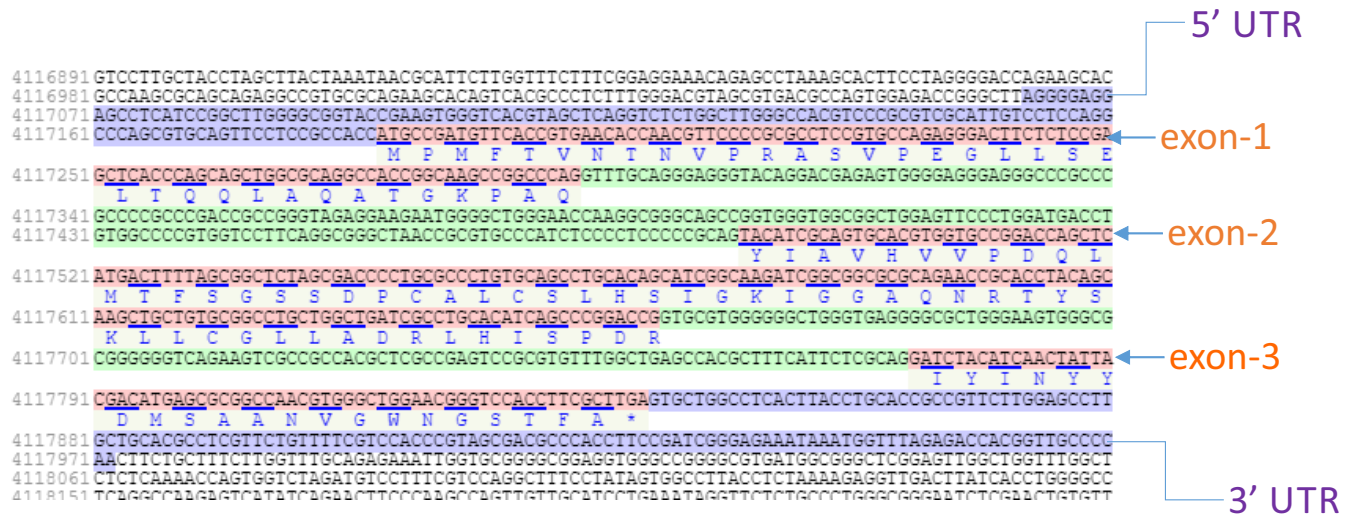
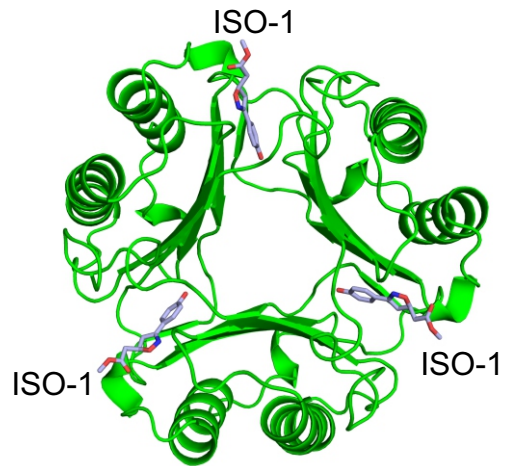


Macrophage migration inhibitory factor of Syrian golden hamster shares structural and functional similarity with human counterpart and promotes pancreatic cancer

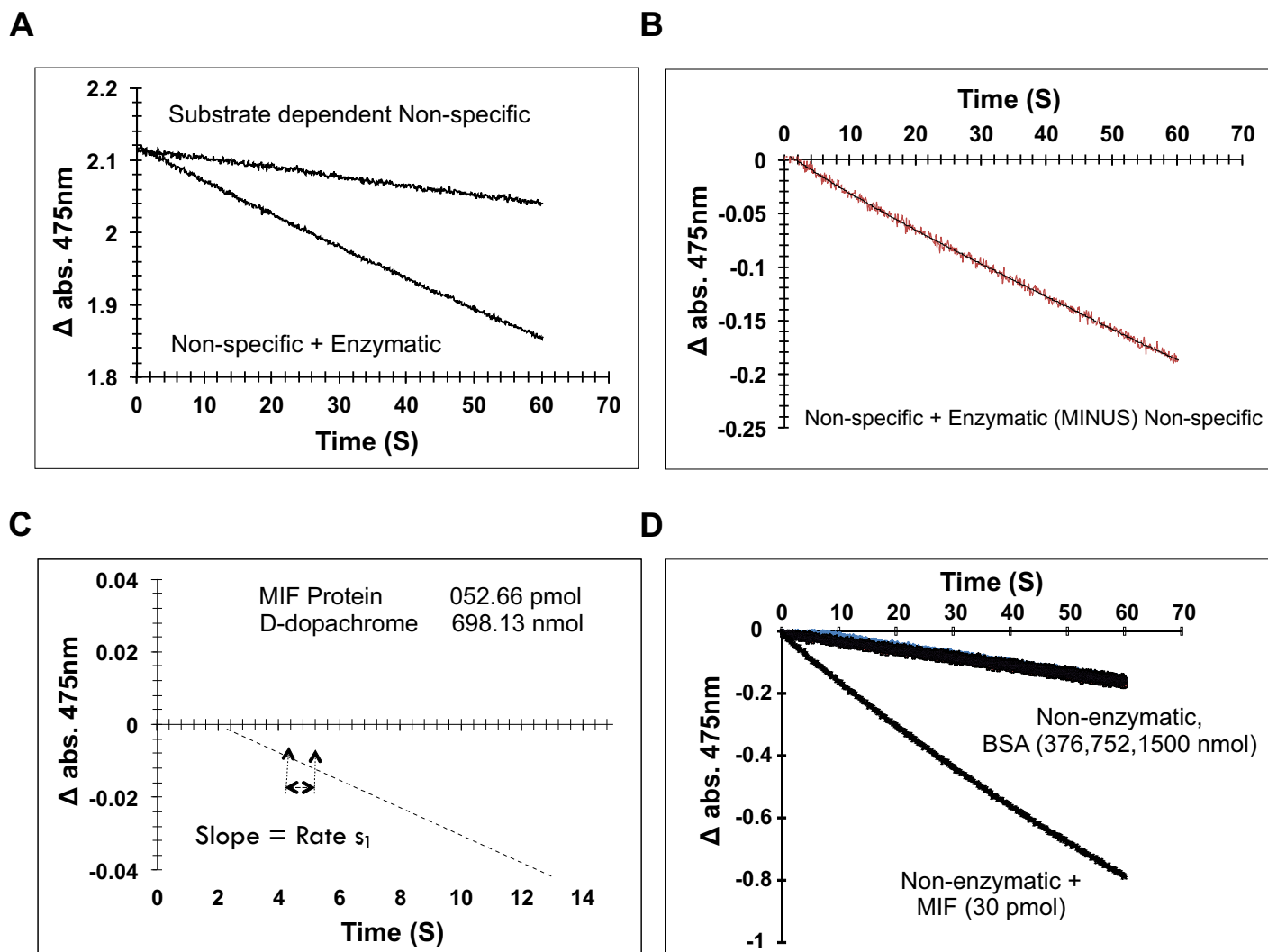
Voddu Suresh^{1,3*}, Rajivgandhi Sundaram^{2,4*}, Pujarini Dash^{1*}, Surendra Chandra Sabat⁵, Debasish Mohapatra¹, Sneha Mohanty⁶, Dileep Vasudevan^{2#}, Shantibhusan Senapati^{1#}



Supplementary Figure 1: Genomic organization of *Mesocricetus auratus* Mif gene shown in NCBI Reference Sequence NW_004801628.1



Supplementary Figure 2: Crystal structure of homo-trimeric human MIF (green) in complex with ISO-1 (blue) [PDB id: 1ljt]. The MIF trimer is shown in cartoon representation and the three ISO-1 molecules in stick model.



Supplementary Figure 3: Background correction for the non-enzymatic activity of L-dopachrome methyl ester.

Figure 1D & 1E

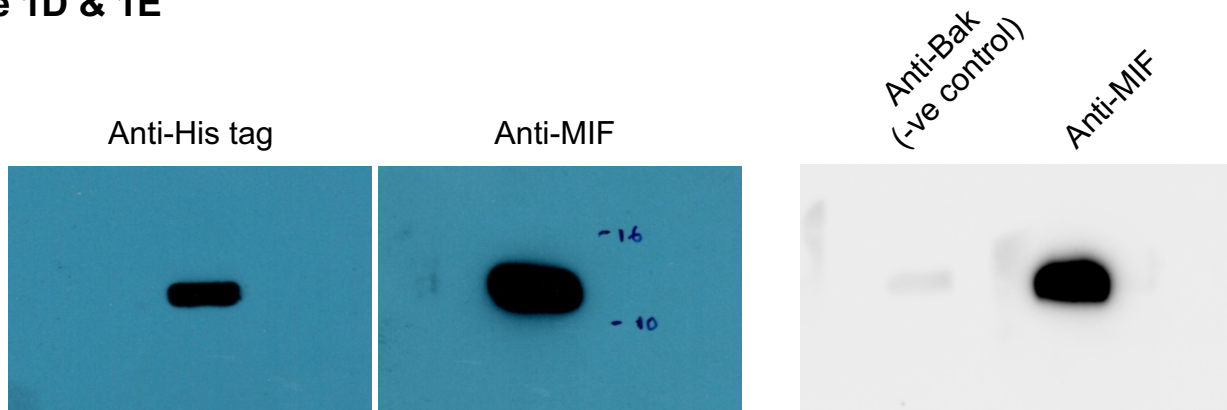
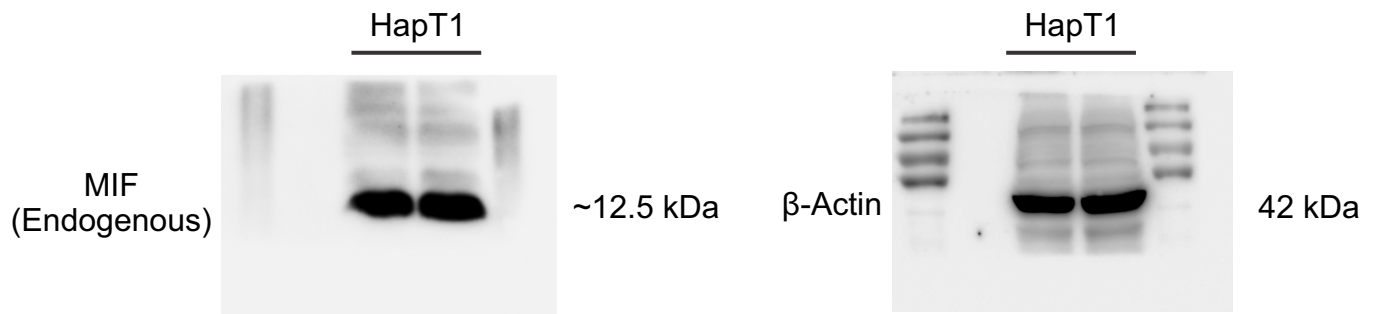


Figure 6 A



Supplementary Figure 4: Uncropped blots for corresponding figures.