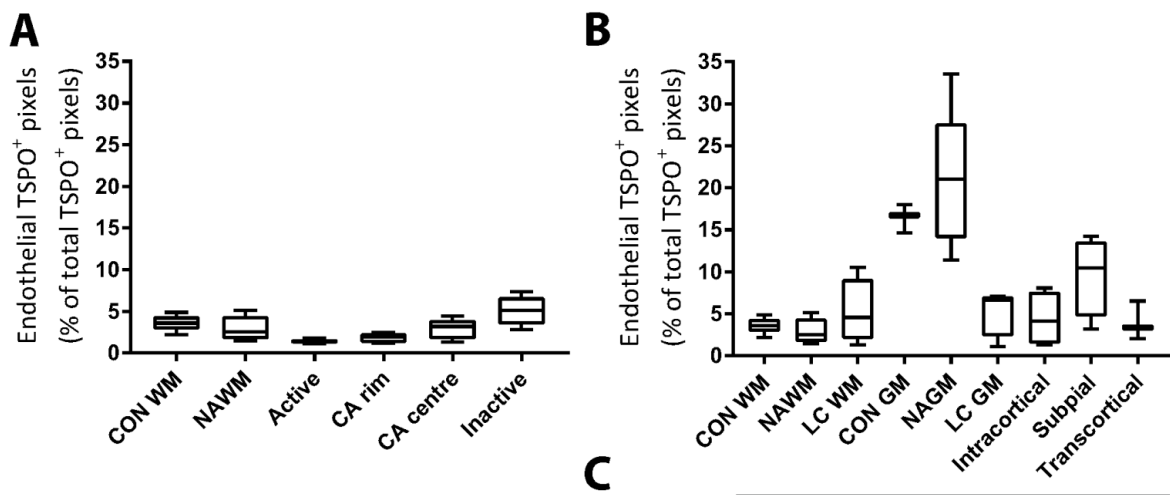


Supplementary Figure 1. TSPO expression in endothelial cells in white and grey matter lesions

Endothelial TSPO expression shown as a percentage of total TSPO expression. Endothelial TSPO expression contributes for a small part to total TSPO expression in the white matter (A). Endothelial contribution to the TSPO signal is increased in control grey matter and NAGM compared to the white matter and the NAWM, as well as compared to grey matter lesions (B). P-values see table. CON WM= control white matter, NAWM= normal appearing white matter, CON GM= control grey matter, NAGM= normal appearing grey matter, CA= chronic active, LC = leukocortical lesion.



C

Sidak's multiple comparisons test		P Value
CON GM vs. Type 1 GM	*	0.0225
CON GM vs. Type 2	*	0.0104
CON GM vs. Type 4	*	0.0144
NAGM vs. Type 1 GM	****	<0.0001
NAGM vs. Type 2	****	<0.0001
NAGM vs. Type 3	**	0.0023
NAGM vs. Type 4	****	<0.0001
CON WM vs. CON GM	**	0.0033
NAWM vs. NAGM	****	<0.0001