

Supplementary Data 5_Cover Page

E2F1 Acetylation Directs p300/CBP-mediated Histone Acetylation at DNA Double-Strand Breaks to Facilitate Repair.

Manickavinayaham et al.

Uncropped and unprocessed scans of blots/gels are provided as Supplementary Data 5. The size of this file is more than 30 MB. Thus, it is not included in Supplementary Information, instead provided as Supplementary Data 5. It includes the uncropped and unprocessed scans of blots/gels corresponding to

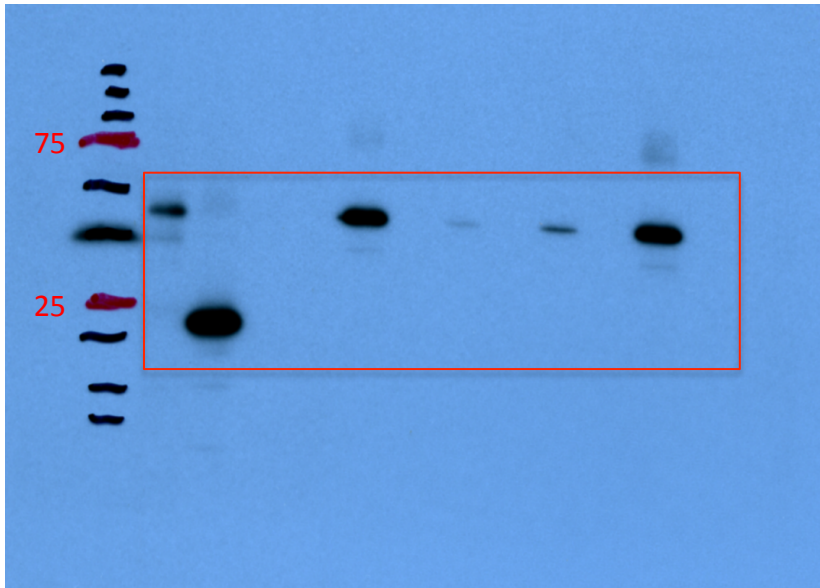
Main Figures - 1b, c; 2a, b; 4b, c; 5b; 6b, d

and

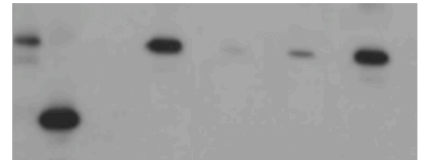
Supplementary Figures - 1c; 2a; 3d; 4b; 6e; 7a, b

Fig. 1b

Source



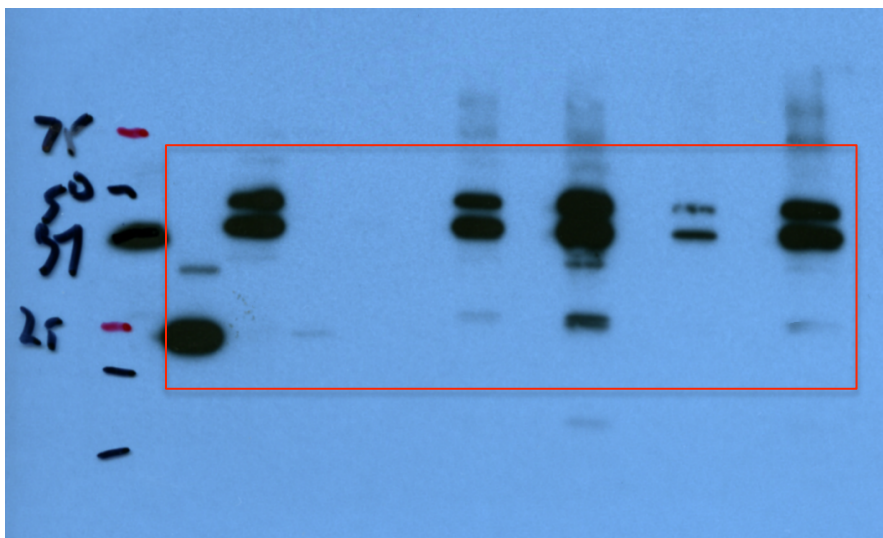
Cropped



Molecular weight markers in red are 75 KD (Top) and 25 KD (Bottom)

Fig. 1c

Source



Cropped

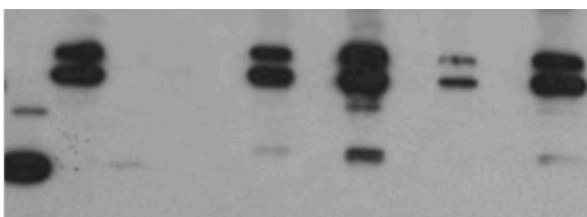
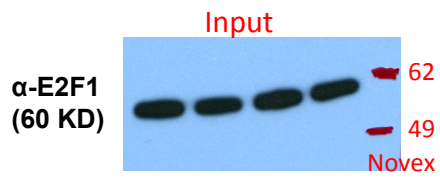
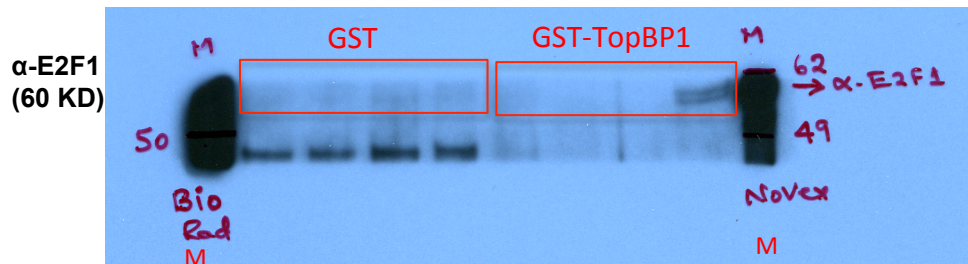


Fig. 2a



M - Molecular weight markers (KD)



Not used in paper – After pull down with beads, sup was checked for pull down efficiency

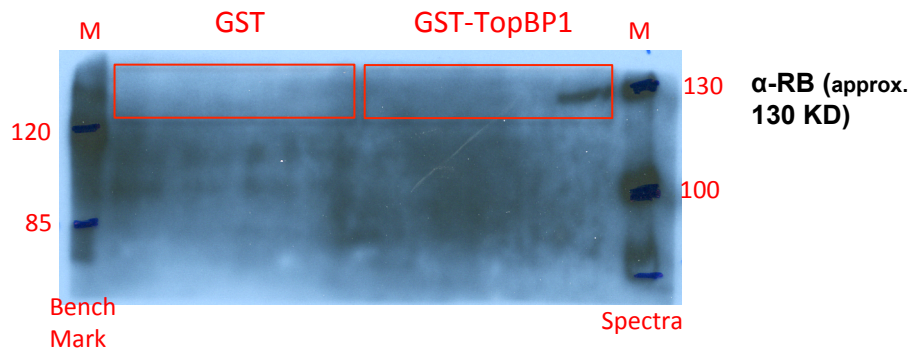
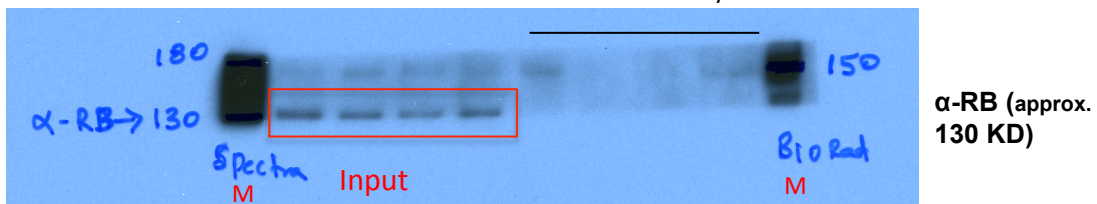


Fig. 2a continued

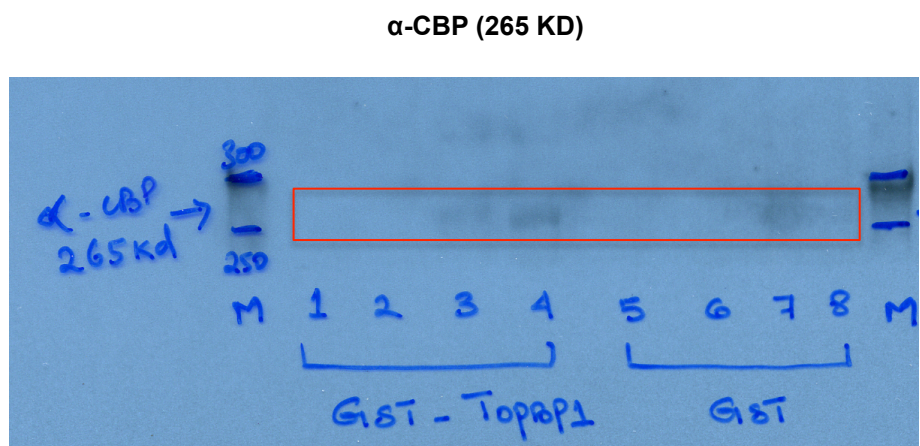
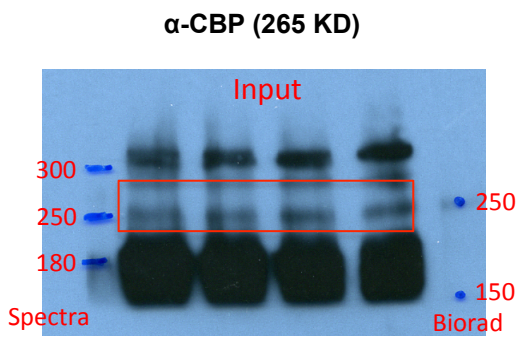
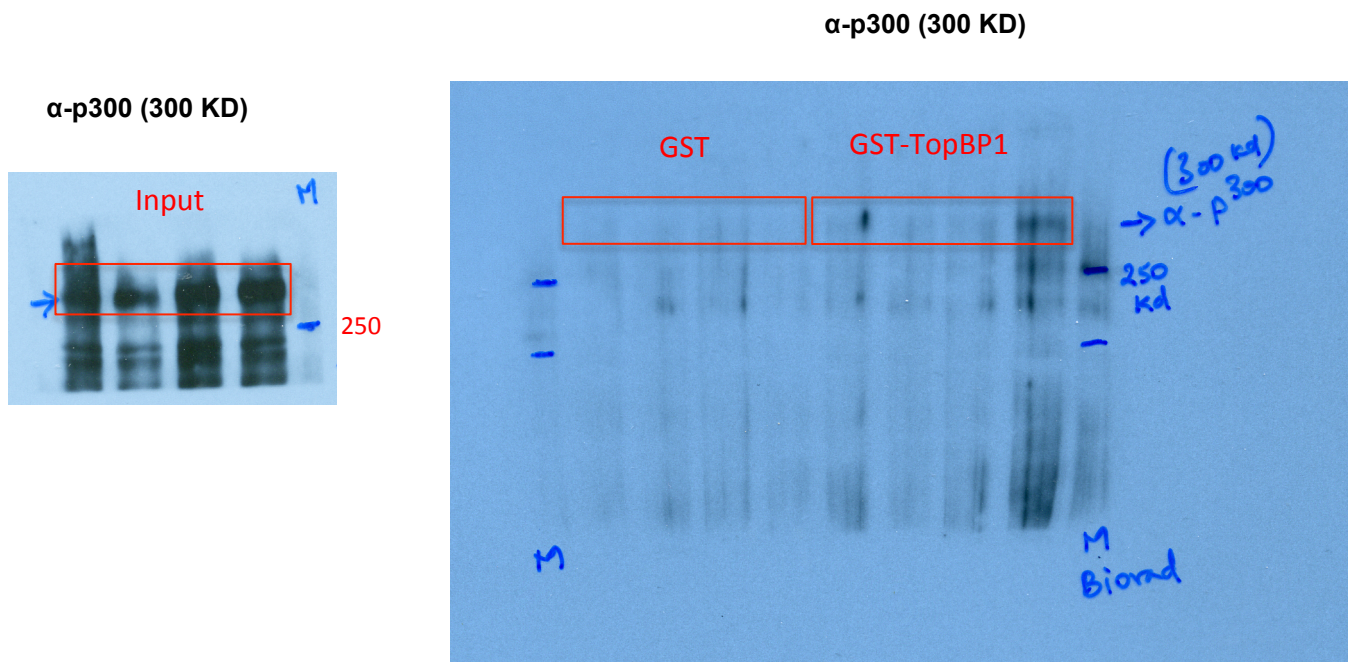
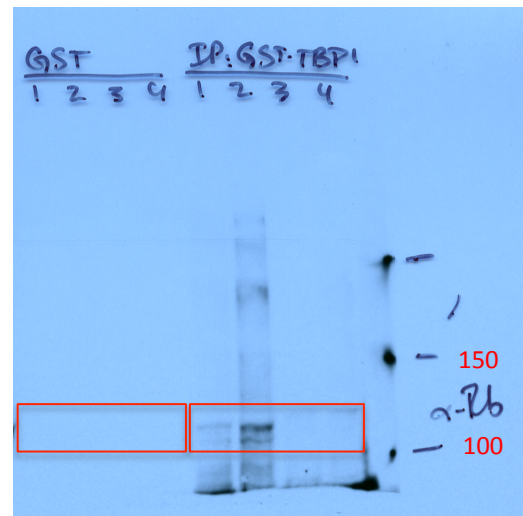
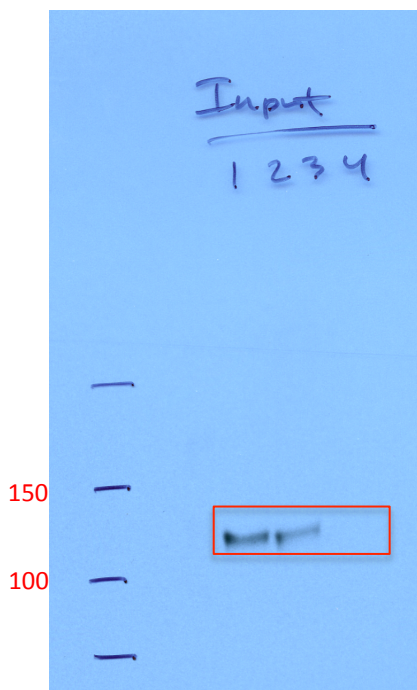
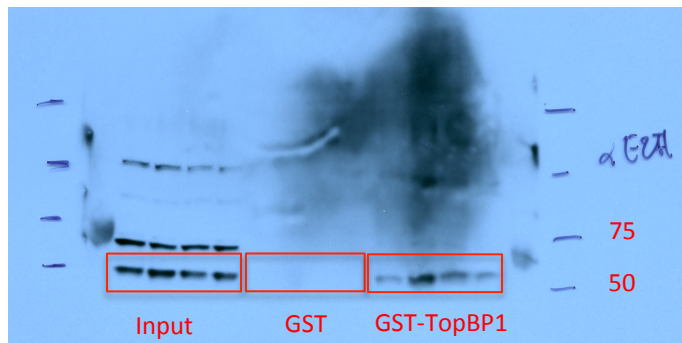


Fig. 2b



α -CBP (265 KD)

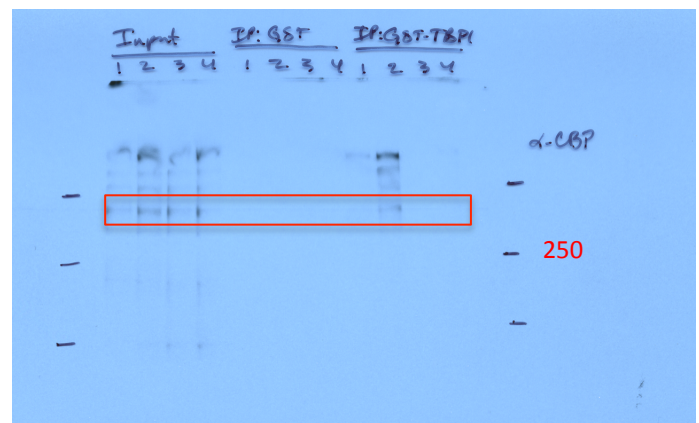
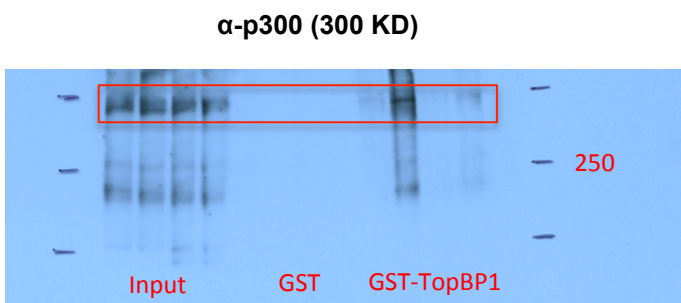


Fig. 4b

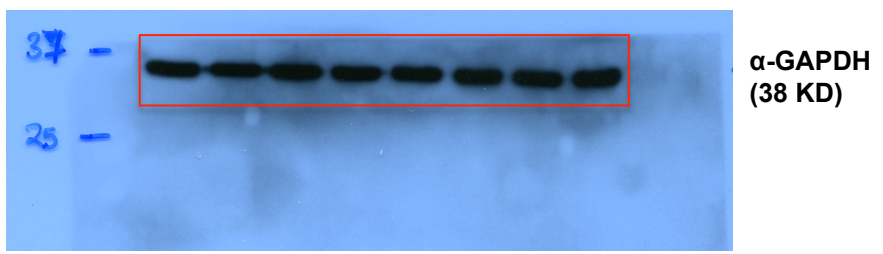
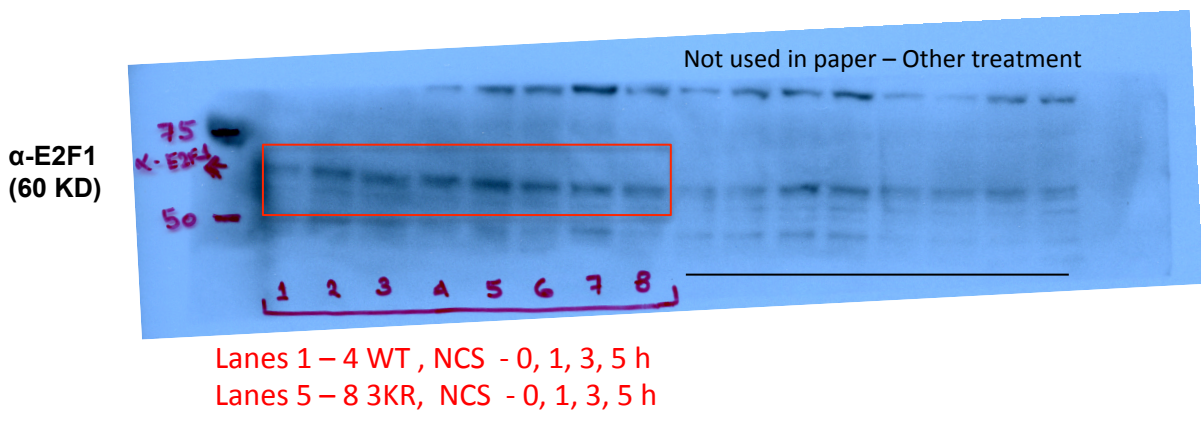


Fig. 4c

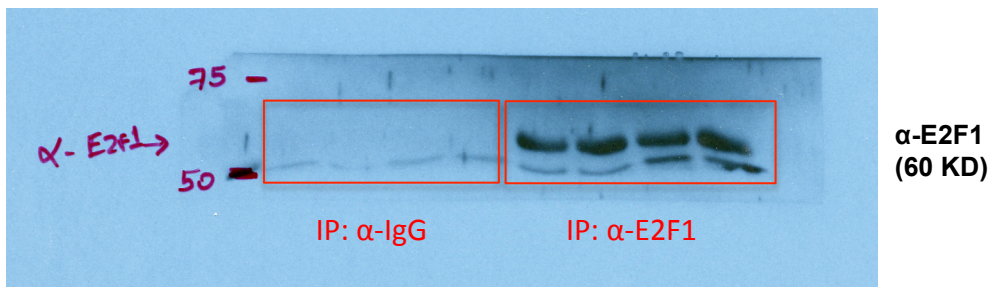
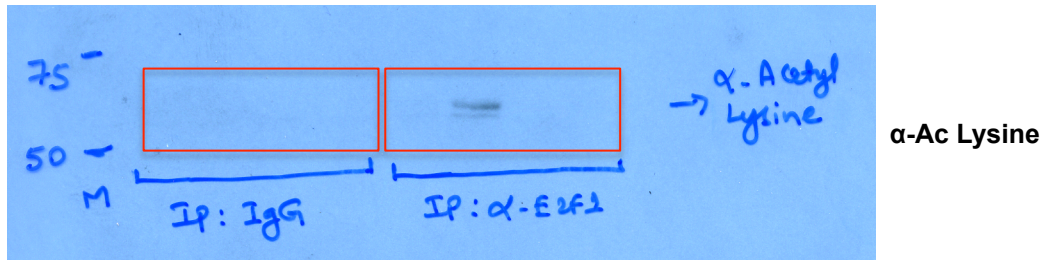


Fig. 5b

C – Control lane, not used in paper.
WT – IR treated lysate.

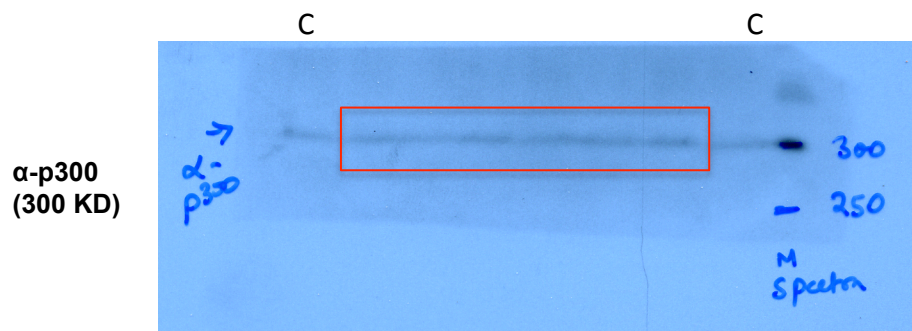
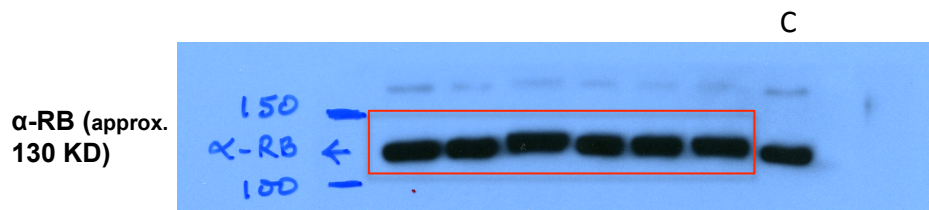
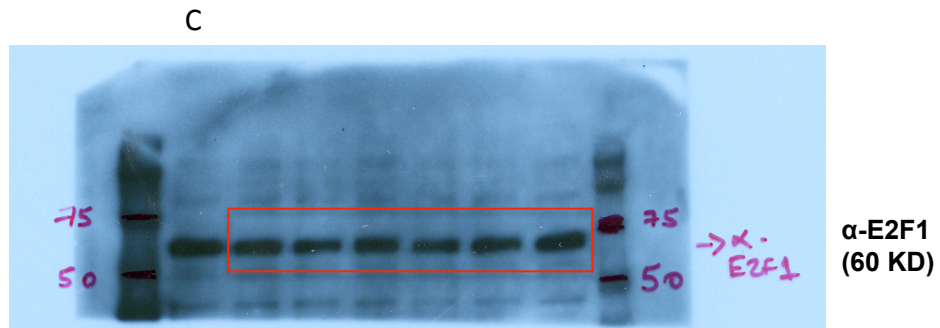


Fig. 5b continued

C – Control lane, not used in paper.
WT – IR treated lysate.

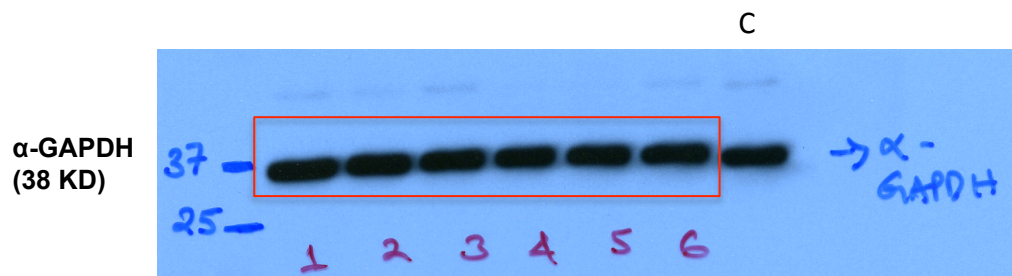
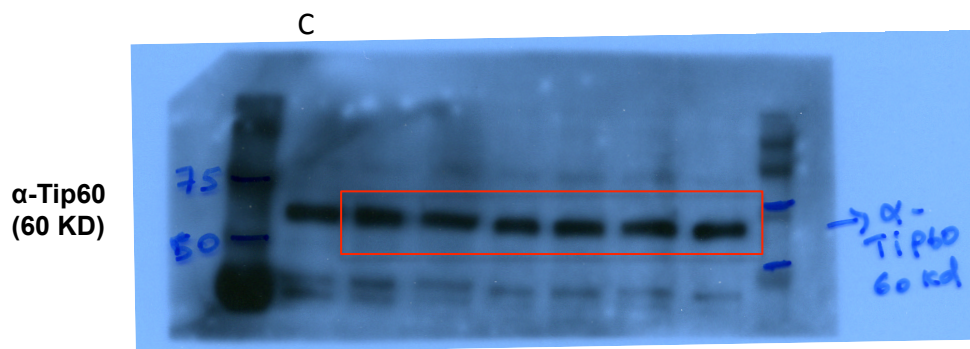
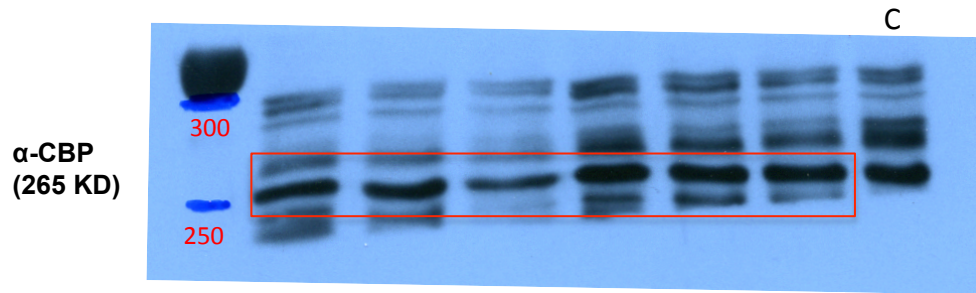


Fig. 6b

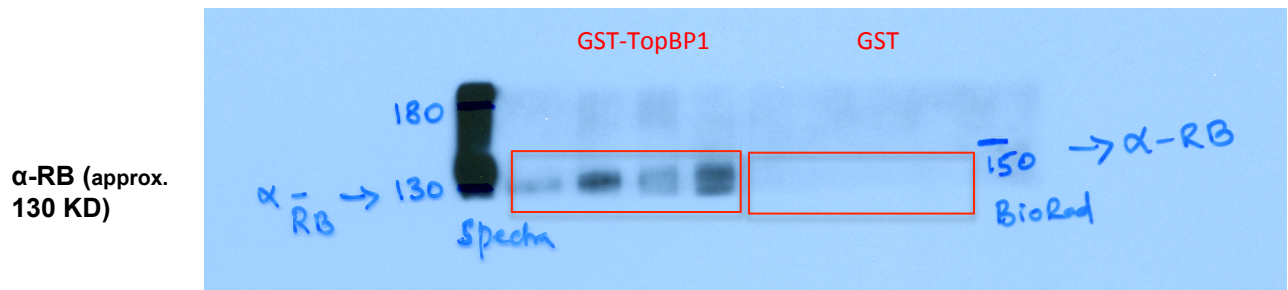
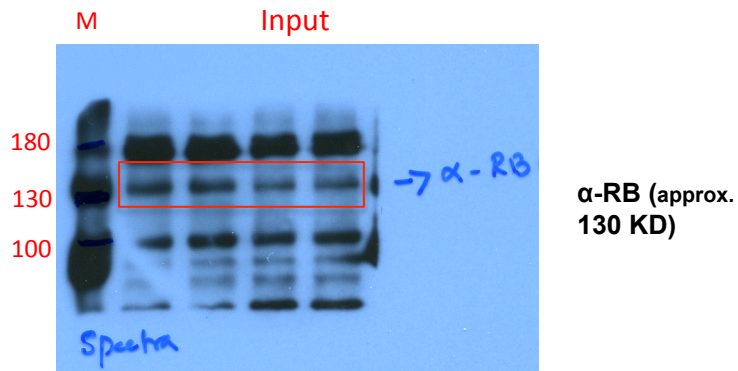
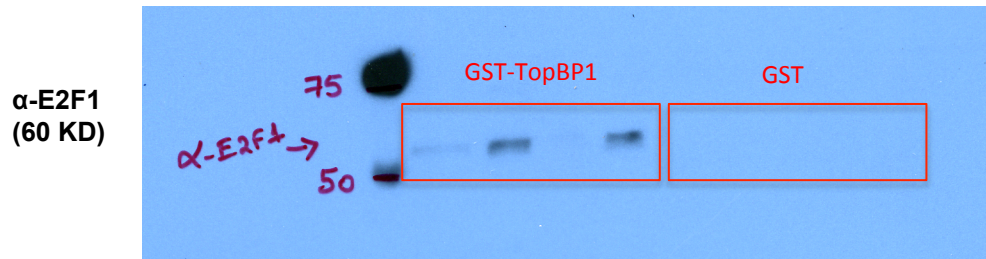
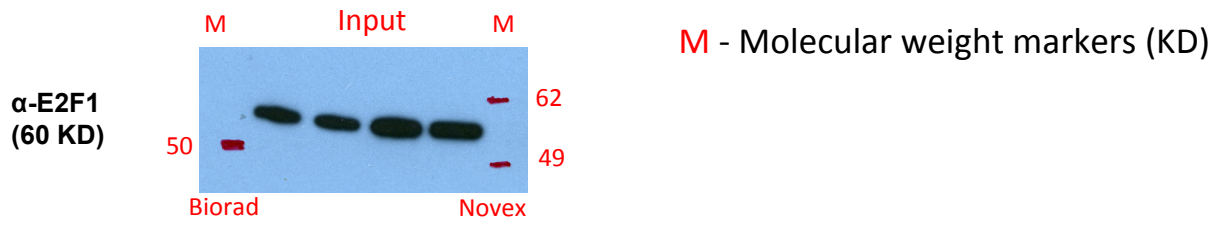


Fig. 6b continued

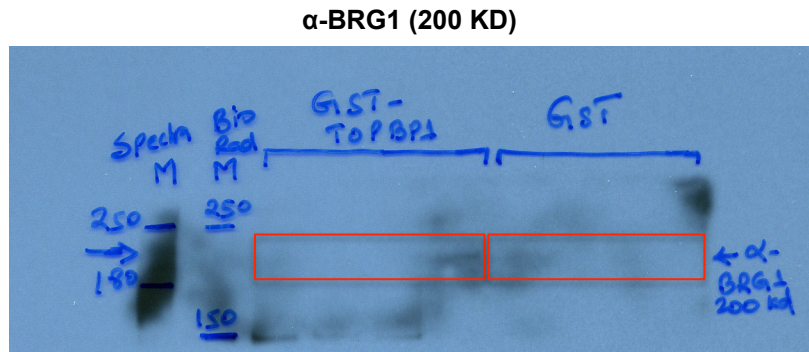
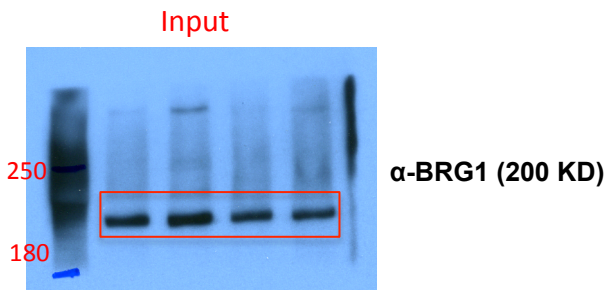
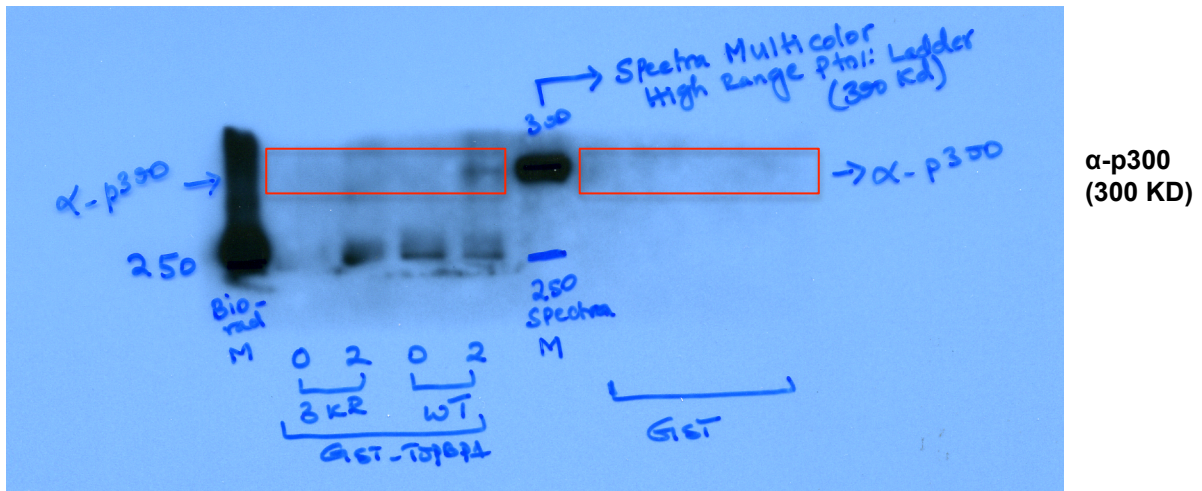
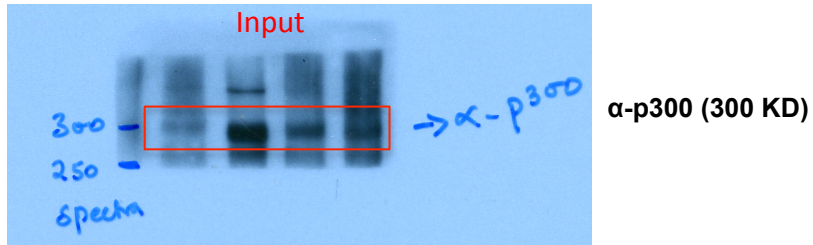
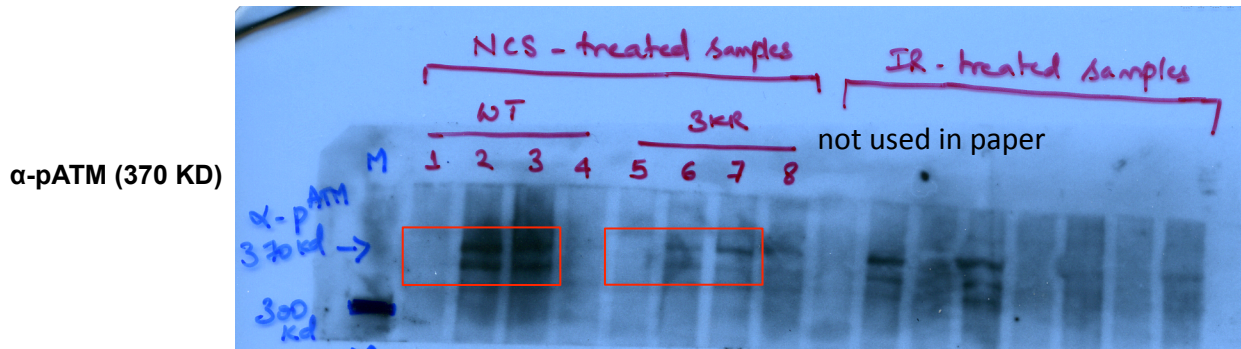


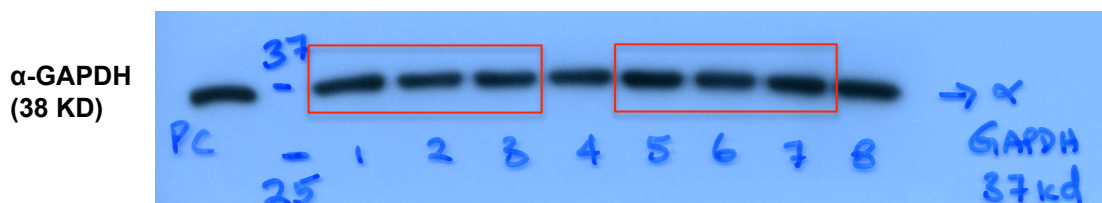
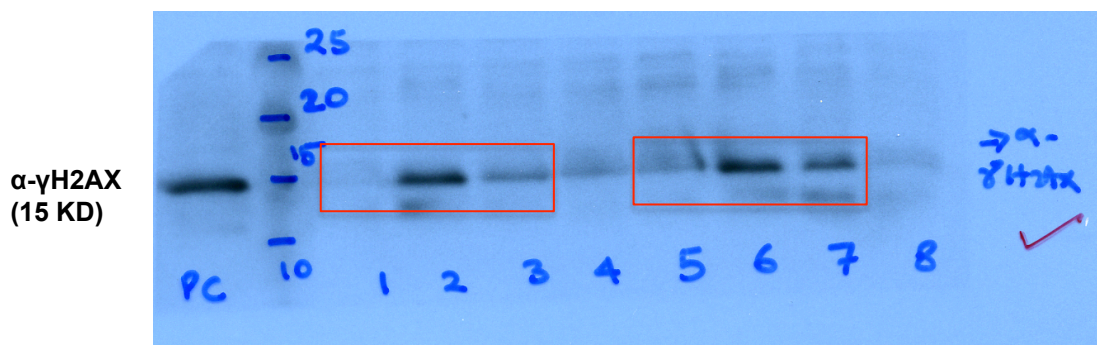
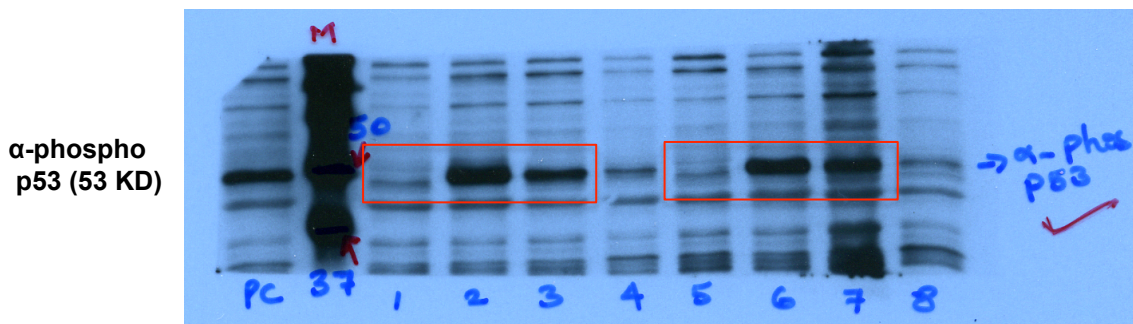
Fig. 6d

Lanes 1 – 3 WT, NCS - 0, 1, 3 h
Lanes 5 – 7 3KR, NCS - 0, 1, 3 h

Lanes 4 and 8 – WT & 3KR respectively, later time point of NCS treatment, not used in paper

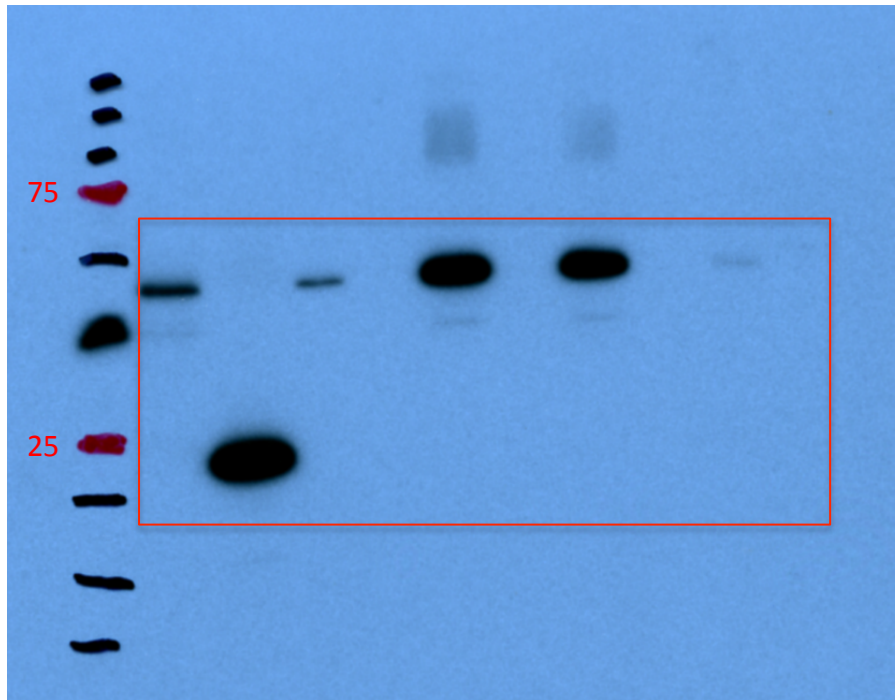


PC – Positive control, WT treated with saturated concentration of NCS, not used in paper



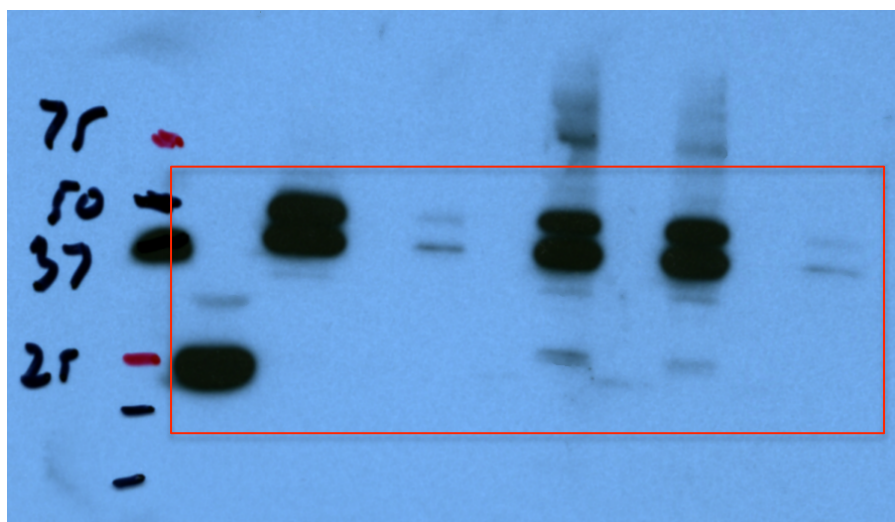
Supplementary Figure 1c

Top Panel : GST-p300 incubation with E2F1 di-acetylated peptides



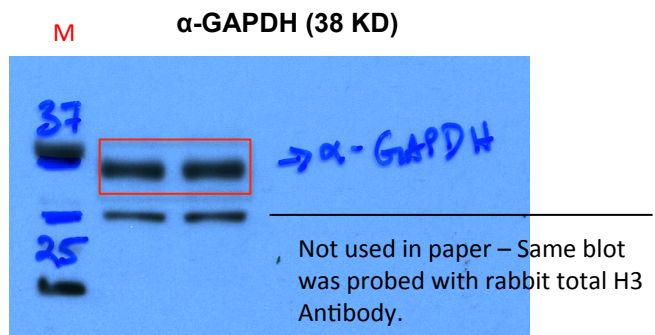
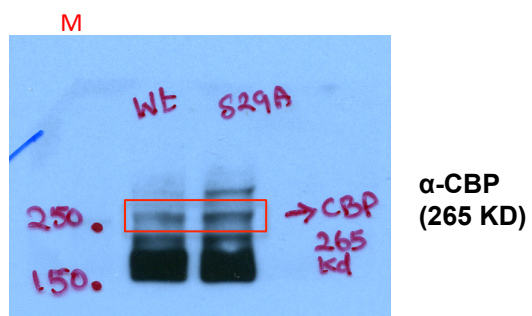
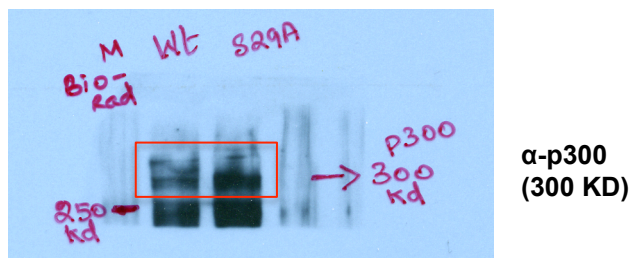
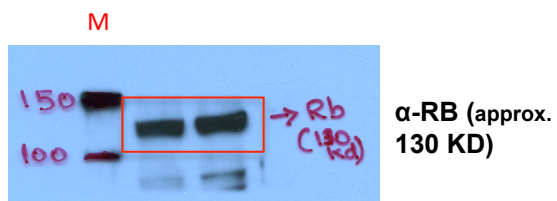
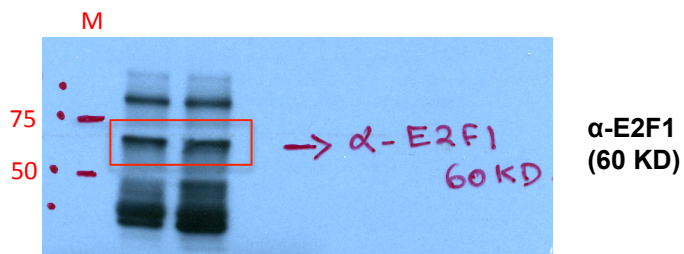
Molecular weight markers in red are 75 KD (Top) and 25 KD (Bottom)

Bottom Panel : GST-CBP incubation with E2F1 di-acetylated peptides



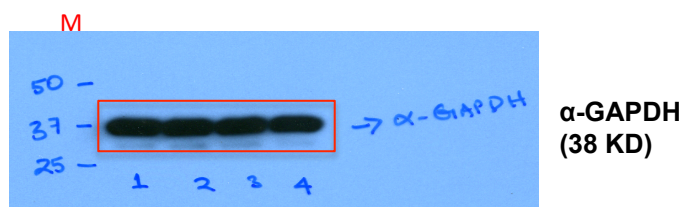
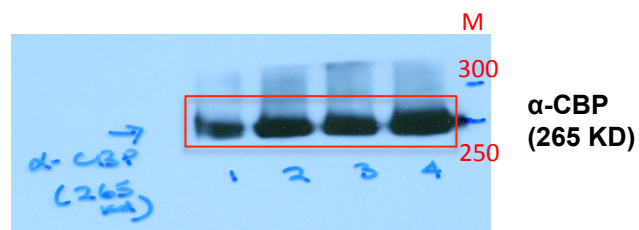
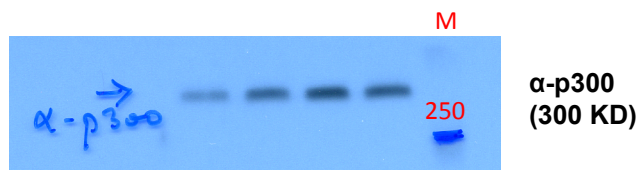
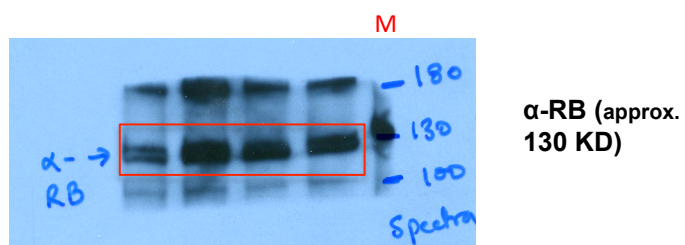
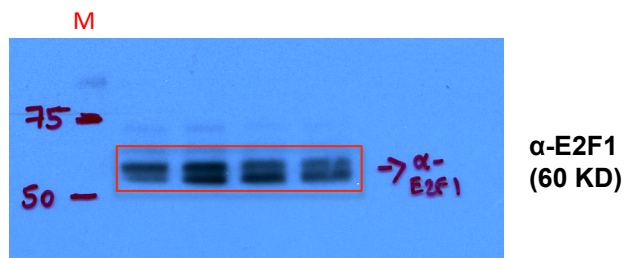
Supplementary Figure 2a

M - Molecular weight markers (KD)

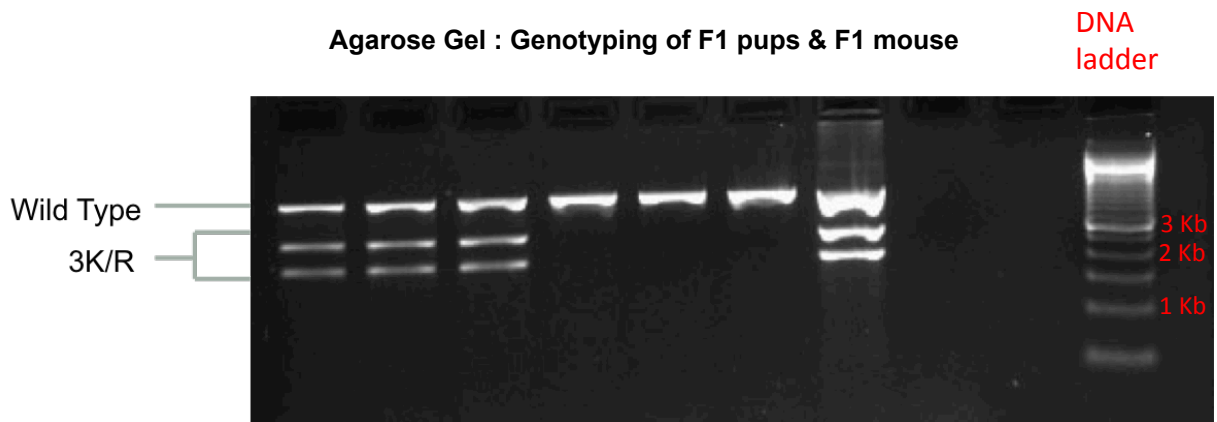


Supplementary Figure 3d

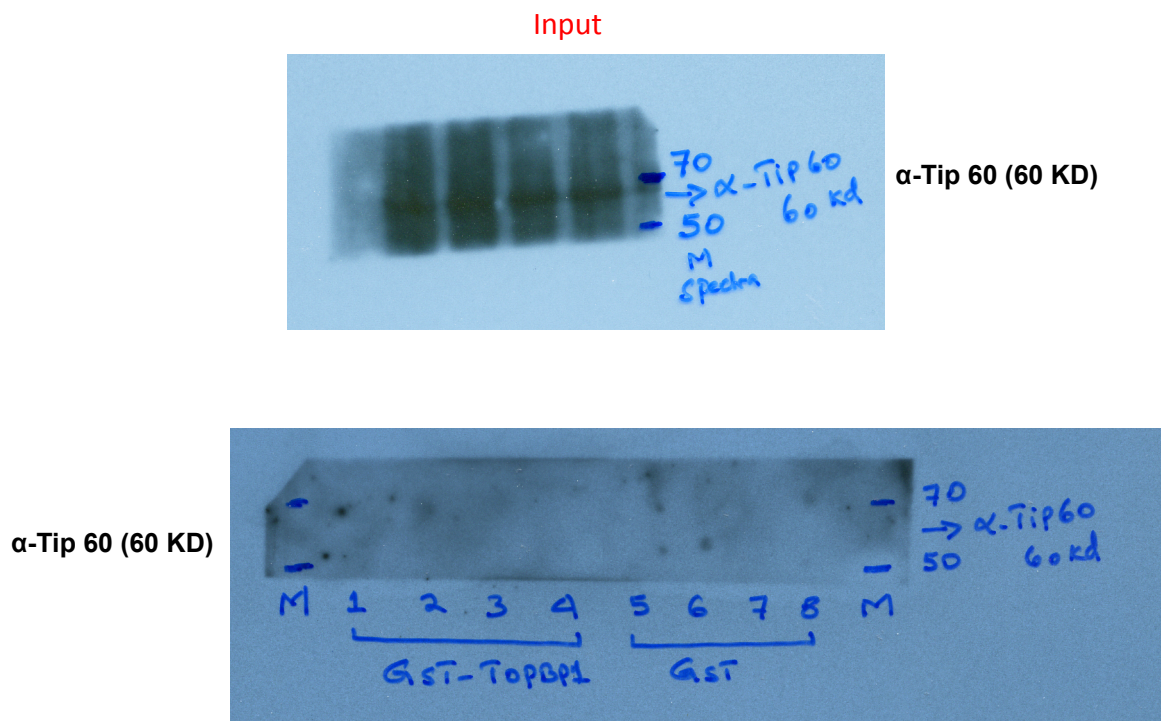
M - Molecular weight markers (KD)



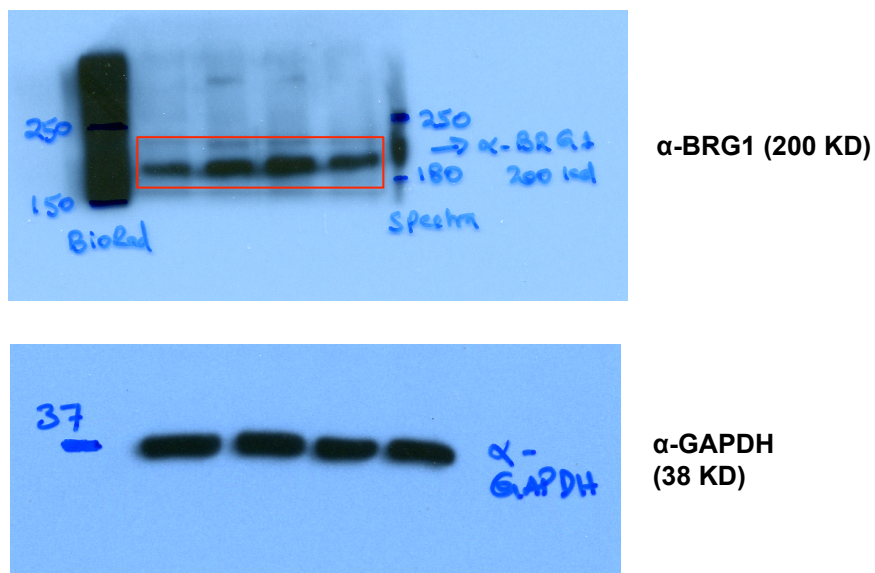
Supplementary Figure 4b



Supplementary Figure 6e



Supplementary Figure 7a



Supplementary Figure 7b

