

In the format provided by the authors and unedited.

Insights into ubiquitin chain architecture using Ub-clipping

Kirby N. Swatek^{1,5}, Joanne L. Usher¹, Anja F. Kueck¹, Christina Gladkova^{1,6}, Tycho E. T. Mevissen^{1,7}, Jonathan N. Pruneda^{1,8}, Tim Skern² & David Komander^{1,3,4*}

¹Medical Research Council Laboratory of Molecular Biology, Cambridge, UK. ²Department of Medical Biochemistry, Max Perutz Labs, Vienna Biocenter, Medical University of Vienna, Vienna, Austria. ³Ubiquitin Signalling Division, The Walter and Eliza Hall Institute of Medical Research, Parkville, Victoria, Australia. ⁴Department of Medical Biology, The University of Melbourne, Melbourne, Victoria, Australia. ⁵Present address: Department of Molecular Machines and Signaling, Max Planck Institute of Biochemistry, Martinsried, Germany. ⁶Present address: Department of Cellular and Molecular Pharmacology, University of California San Francisco, San Francisco, CA, USA. ⁷Present address: Department of Biological Chemistry and Molecular Pharmacology, Harvard Medical School, Boston, MA, USA. ⁸Present address: Department of Molecular Microbiology and Immunology, Oregon Health and Science University, Portland, OR, USA. *e-mail: dk@wehi.edu.au

Insights into ubiquitin chain architecture using Ub-clipping

Supplementary Information Guide

Kirby N. Swatek^{1,2}, Joanne L. Usher¹, Anja F. Kueck¹, Christina Gladkova¹, Tycho E.T. Mevissen^{1,3}, Jonathan N. Pruneda^{1,4}, Tim Skern⁵ and David Komander^{1,6,7*}

¹ Medical Research Council Laboratory of Molecular Biology, Francis Crick Avenue, Cambridge, CB2 0QH, UK.

² present address: Department of Molecular Machines and Signaling, Max Planck Institute of Biochemistry, Am Klopferspitz 18, 82152 Martinsried, Germany.

³ present address: Harvard Medical School, Department of Biological Chemistry and Molecular Pharmacology, 250 Longwood Ave, Boston, MA 02115, USA.

⁴ present address: Department of Molecular Microbiology and Immunology, Oregon Health and Science University, Portland, OR, USA.

⁵ Department of Medical Biochemistry, Max F. Perutz Laboratories, Vienna Biocenter, Medical University of Vienna, Dr. Bohr-Gasse 9/3, Vienna A-1030, Austria.

⁶ Ubiquitin Signalling Division, The Walter and Eliza Hall Institute of Medical Research, 1G Royal Parade, Parkville, VIC 3052, Australia.

⁷ Department of Medical Biology, The University of Melbourne, Melbourne, VIC 3010, Australia.

* Correspondence to David Komander, dk@wehi.edu.au

Contents

Supplementary Fig. 1 - Uncropped versions of SDS-PAGE gels.

Fig. 1a

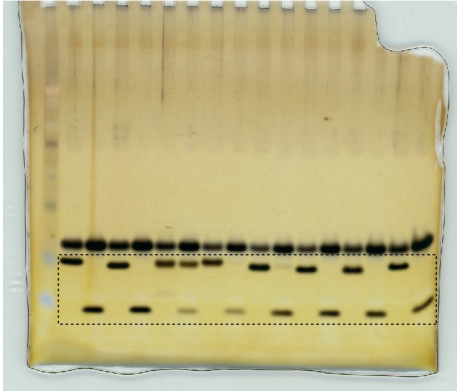


Fig. 3a (top panel)

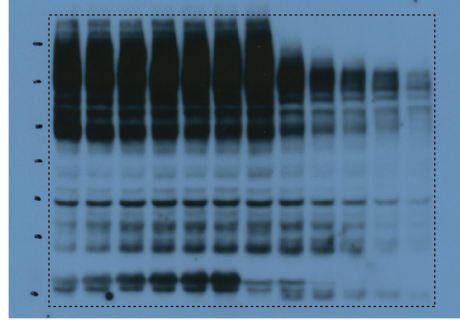


Fig. 3a (bottom panel)

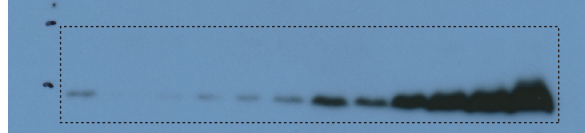


Fig. 3b

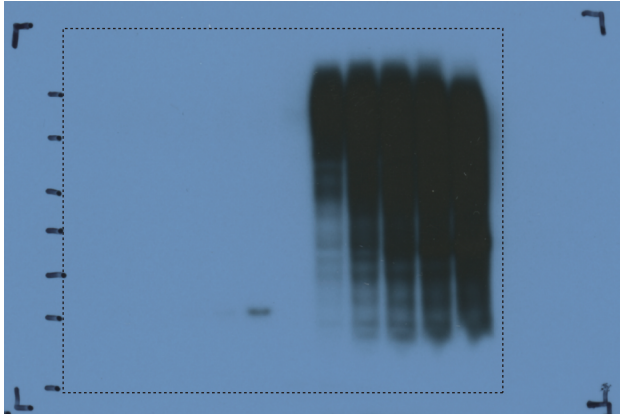


Fig. 3e

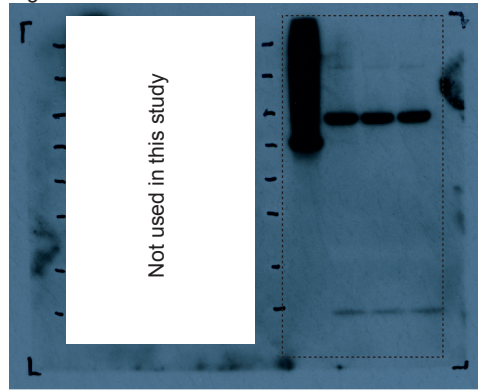


Fig. 4a

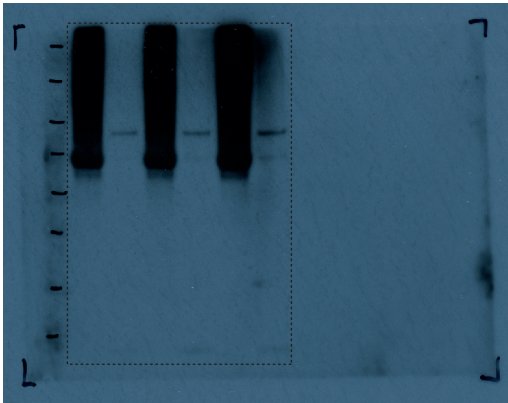


Fig. 4b

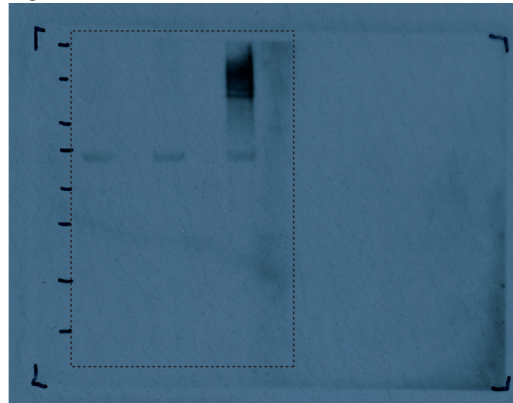


Fig. 4e (left panel)

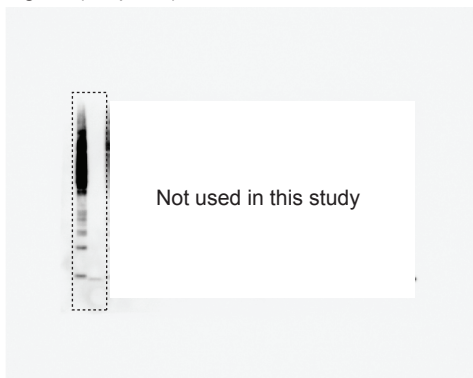
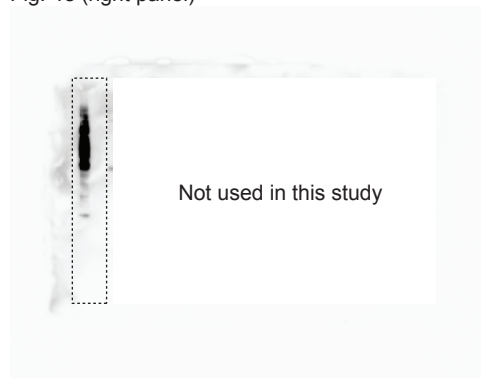
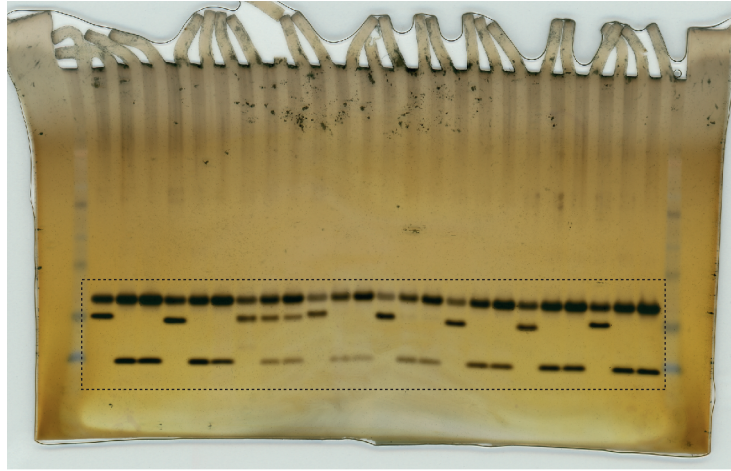


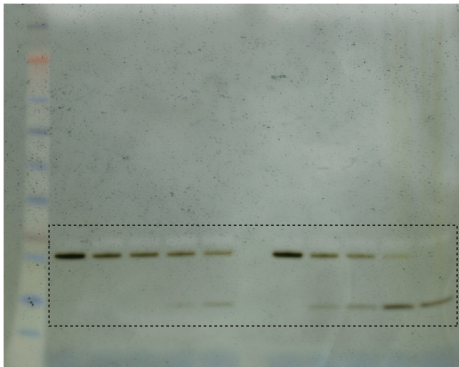
Fig. 4e (right panel)



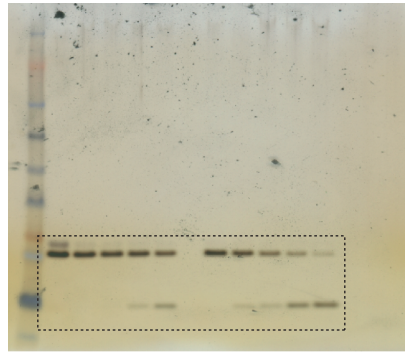
ED Fig. 1b



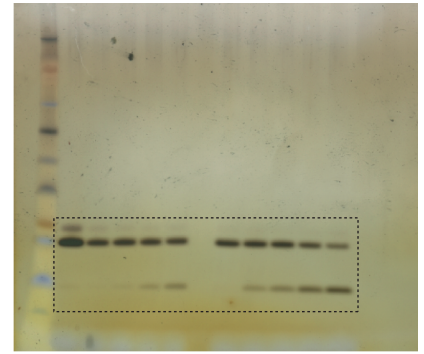
ED Fig. 2b (Met1 diUb)



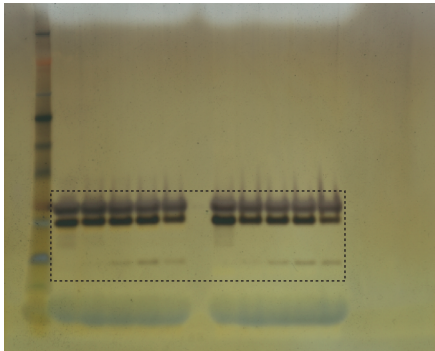
ED Fig. 2b (Lys6 diUb)



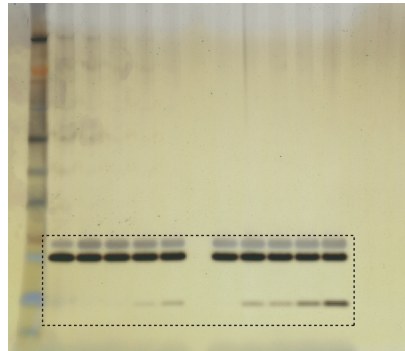
ED Fig. 2b (Lys11 diUb)



ED Fig. 2b (Lys27 diUb)



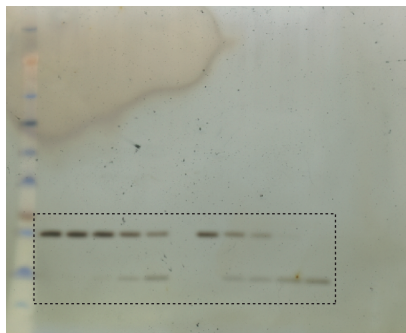
ED Fig. 2b (Lys29 diUb)



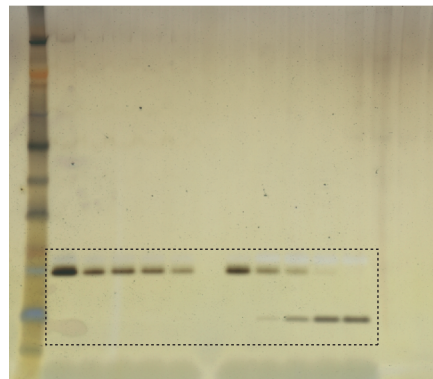
ED Fig. 2b (Lys33 diUb)



ED Fig. 2b (Lys48 diUb)

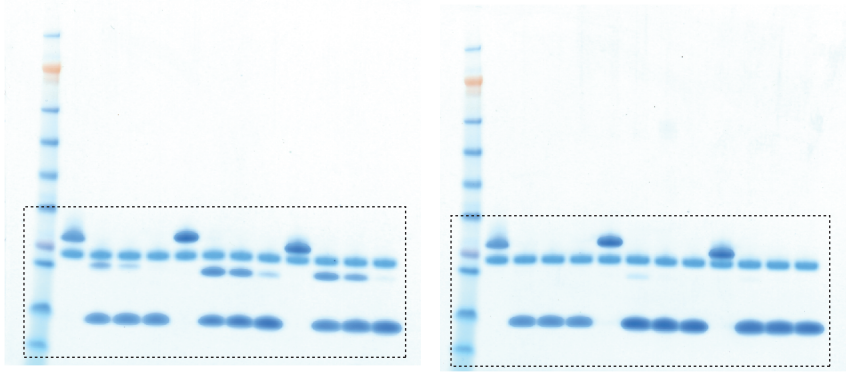


ED Fig. 2b (Lys63 diUb)



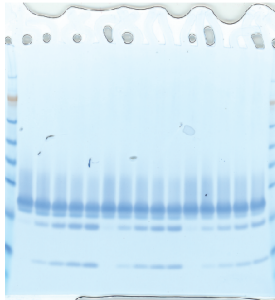
ED Fig. 2g (top panel)

ED Fig. 2g (bottom panel)

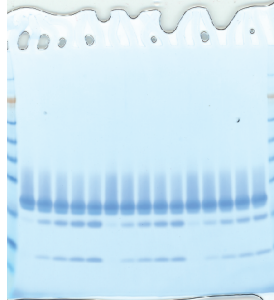


Extended Data Fig. 2h

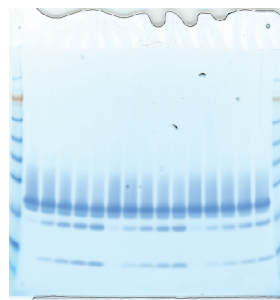
Lb^{pro} (replicate 1)



Lb^{pro} (replicate 2)



Lb^{pro} (replicate 3)



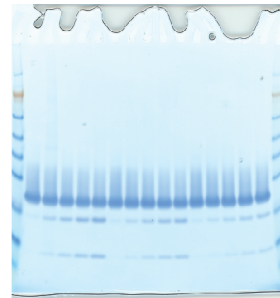
Lb^{pro*} (replicate 1)



Lb^{pro*} (replicate 2)

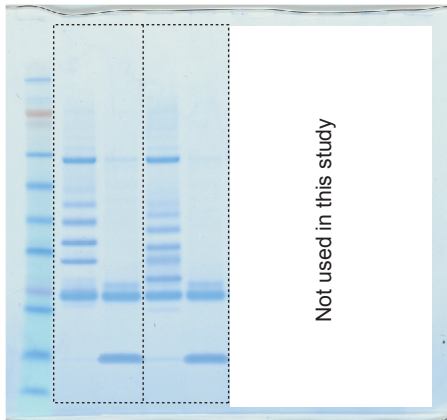


Lb^{pro*} (replicate 3)

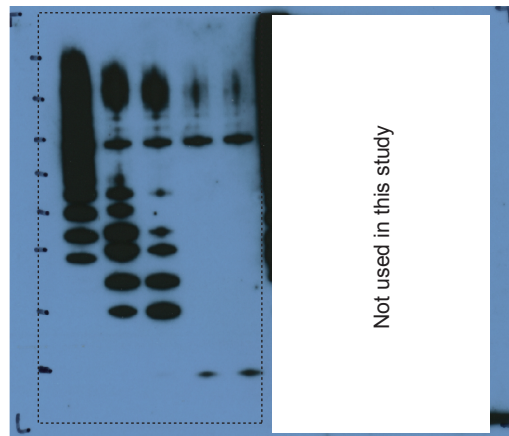


Left: ED Fig. 3a (bottom panel)

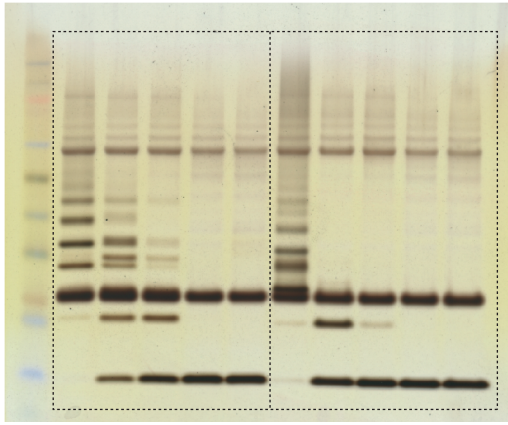
Right: ED Fig. 3d (bottom panel)



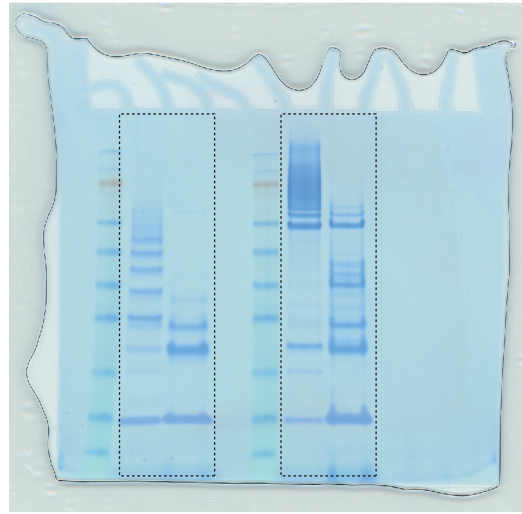
ED Fig. 3a (top right panel)



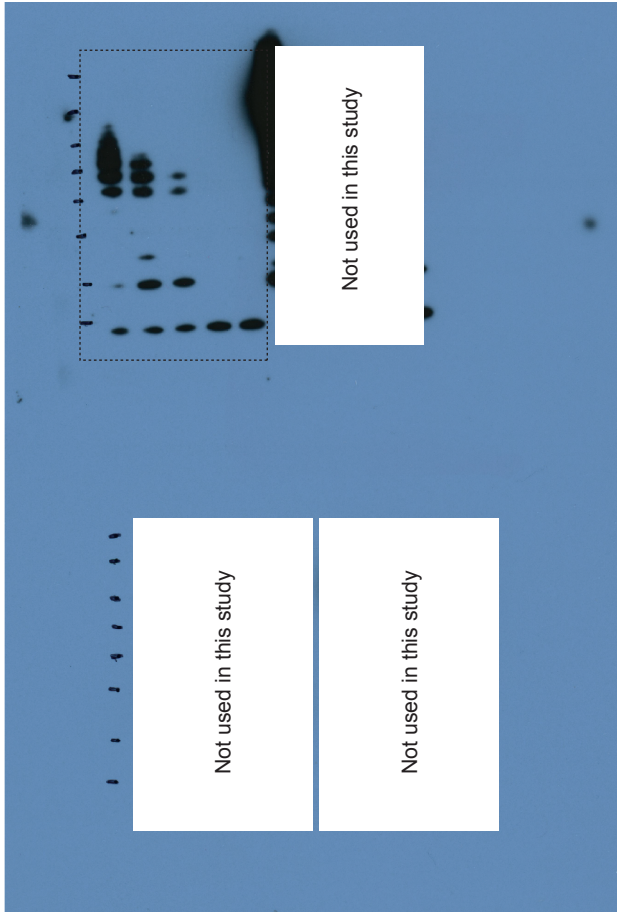
Left: ED Fig. 3a (top left panel)
Right: ED Fig. 3d (top left panel)



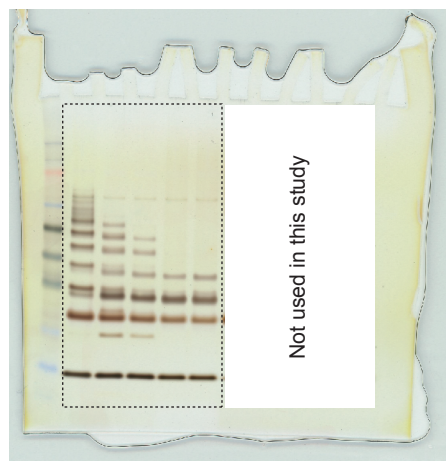
Left: ED Fig. 3b (bottom panel)
Right: ED Fig. 3e (bottom panel)



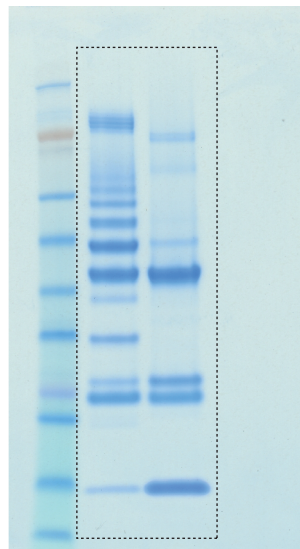
ED Fig. 3b (top right panel)



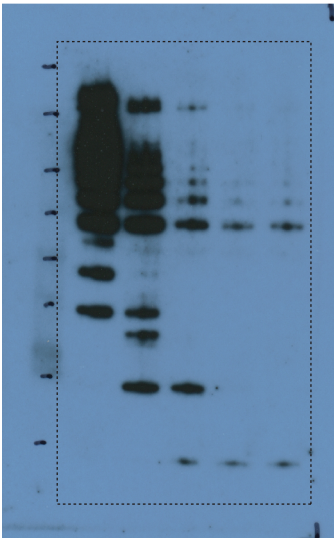
ED Fig. 3b (top left panel)



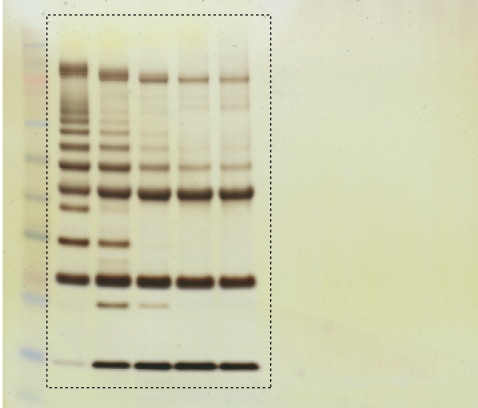
ED Fig. 3c (bottom panel)



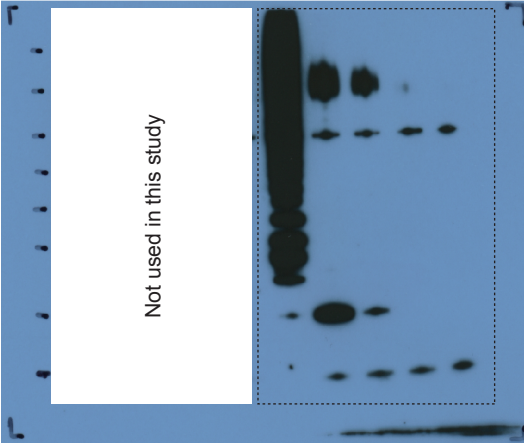
ED Fig. 3c (top right panel)



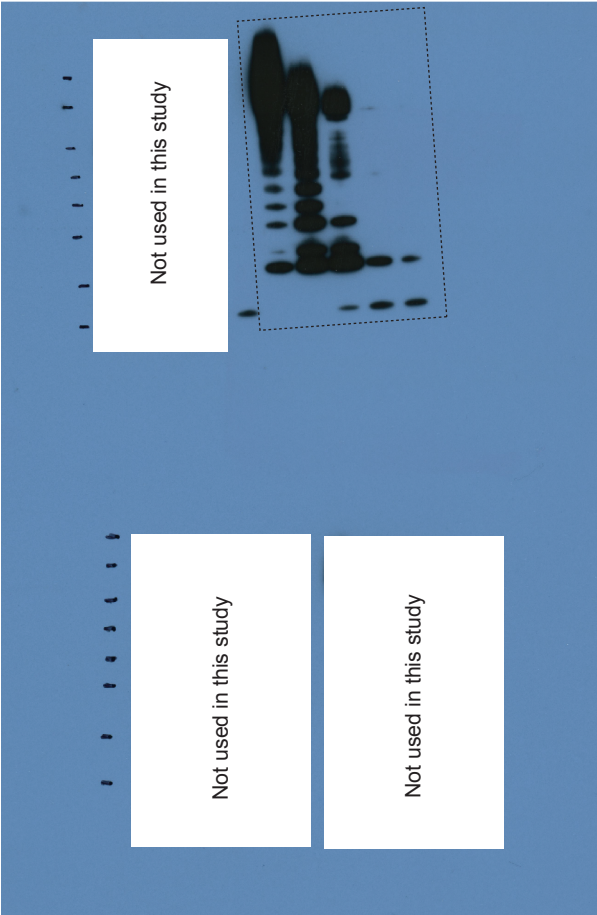
ED Fig. 3c (top left panel)



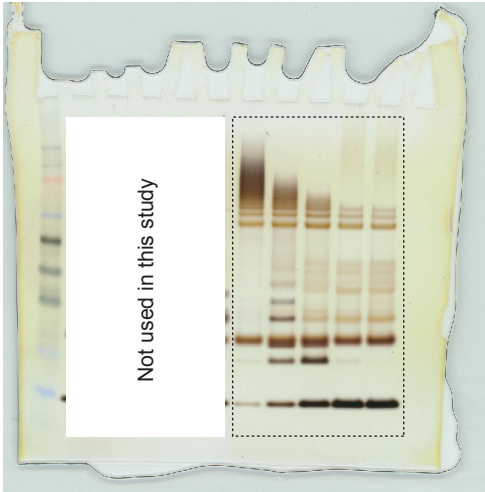
ED Fig. 3d (top right panel)



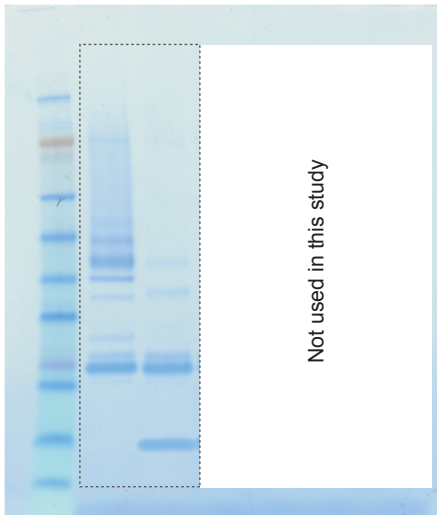
ED Fig. 3e (top right panel)



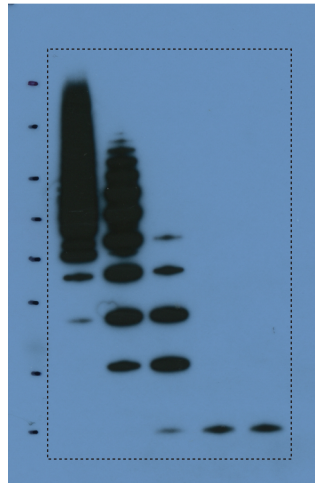
ED Fig. 3e (top left panel)



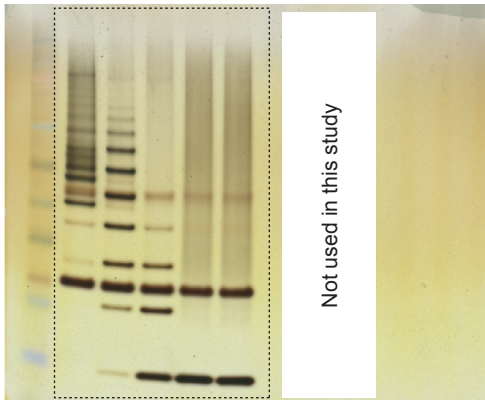
ED Fig. 3f (bottom panel)



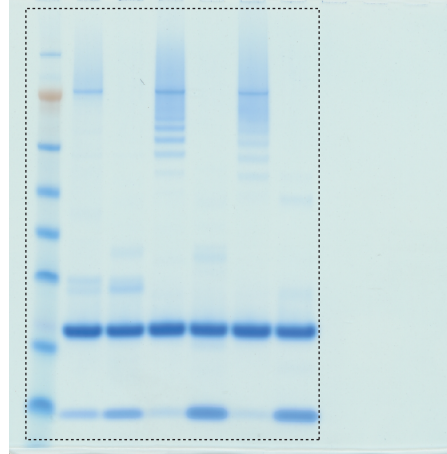
ED Fig. 3f (top right panel)



ED Fig. 3f (top left panel)

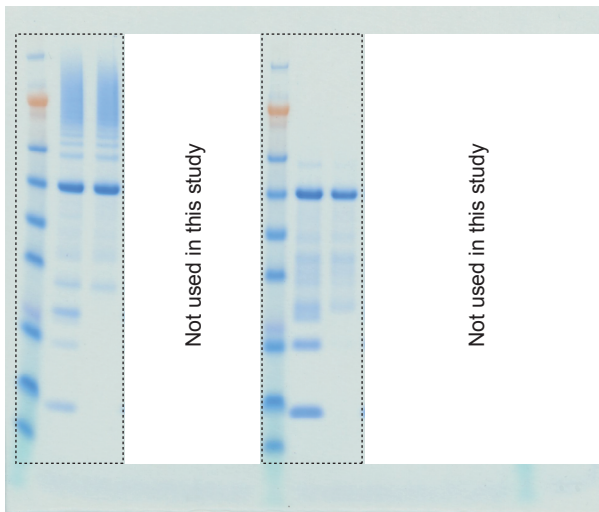


ED Fig. 4b



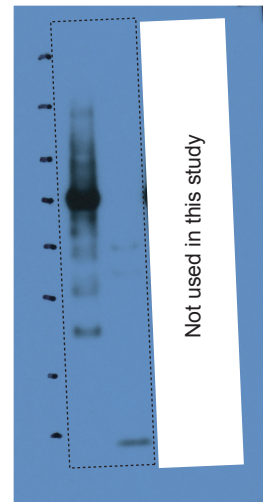
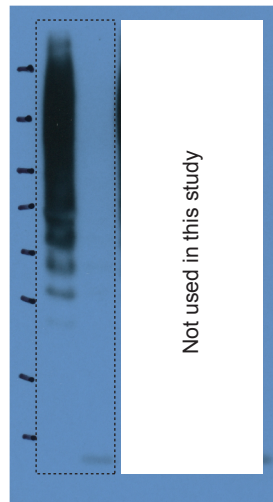
Left: ED Fig. 5a (left panel)

Right: ED Fig. 5b (left panel)

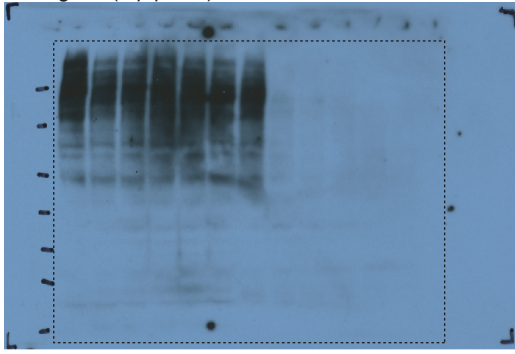


ED Fig. 5a (right panel)

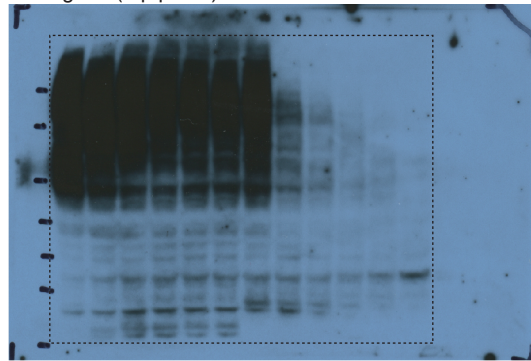
ED Fig. 5b (right panel)



ED Fig. 6a (top panel)



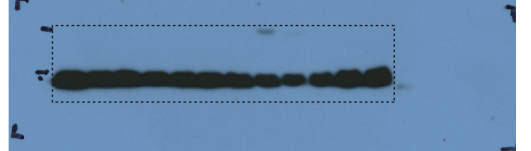
ED Fig. 6b (top panel)



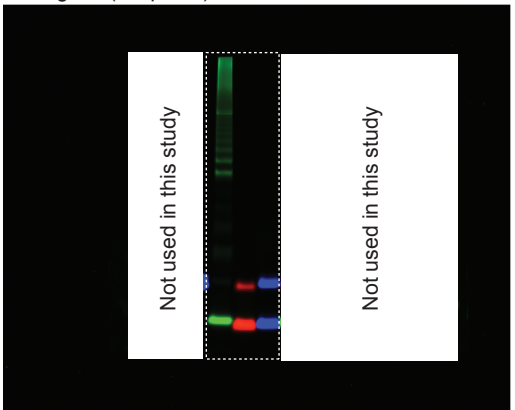
ED Fig. 6a (bottom panel)



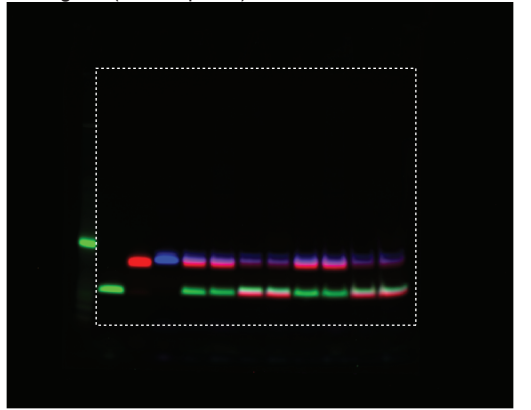
ED Fig. 6b (bottom panel)



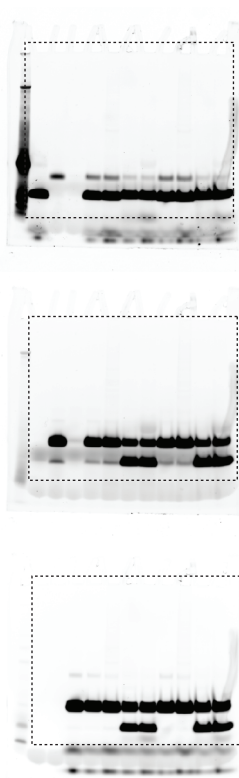
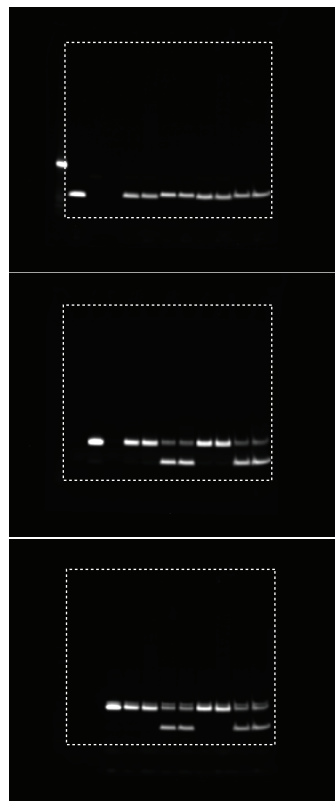
ED Fig. 6c (left panel)



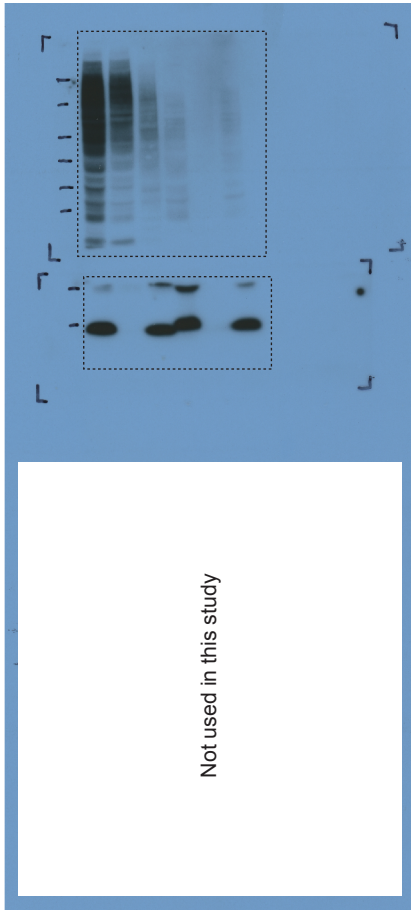
ED Fig. 6c (middle panel)



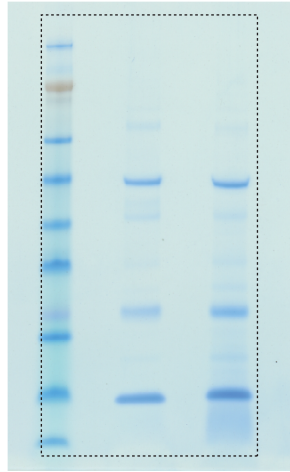
ED Fig. 6c (right panels)



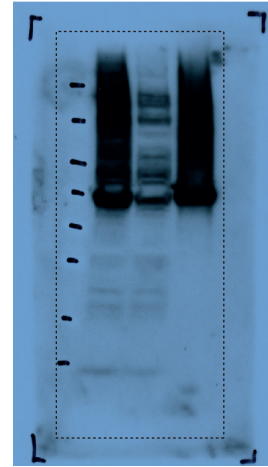
ED Fig. 6e



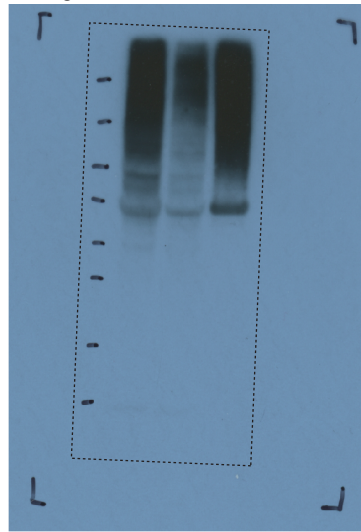
ED Fig. 6f



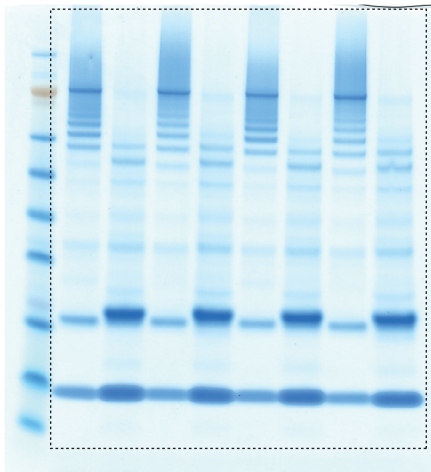
ED Fig. 8a



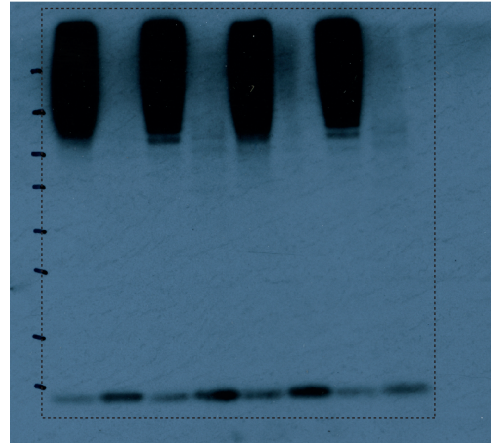
ED Fig. 8b



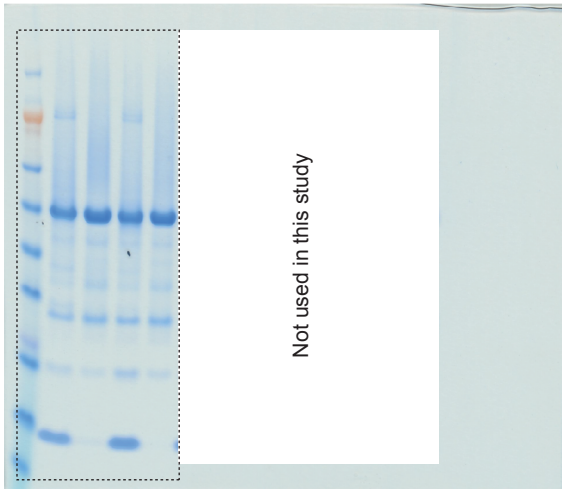
ED Fig. 9a



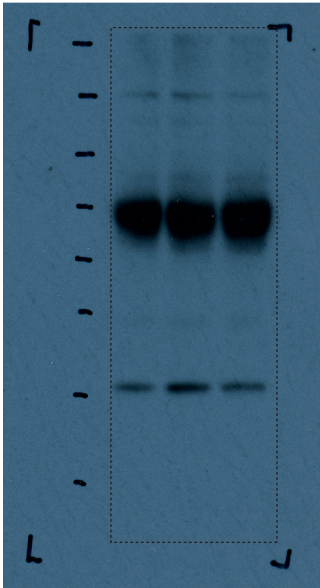
ED Fig. 9b



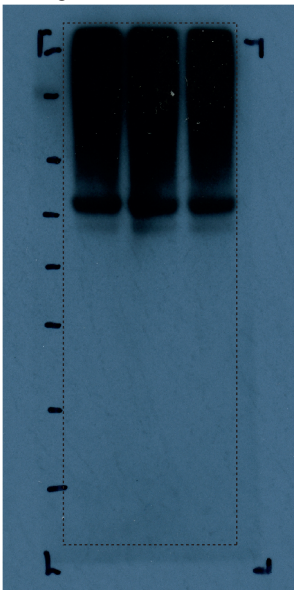
ED Fig. 9c



ED Fig. 10a



ED Fig. 10b



ED Fig. 10e

