

Figure S1. Expression levels of TLR2 in cells as determined by (A) RT-qPCR, (B) western blotting and (C) flow cytometry. TLR, Toll-like receptor 2.

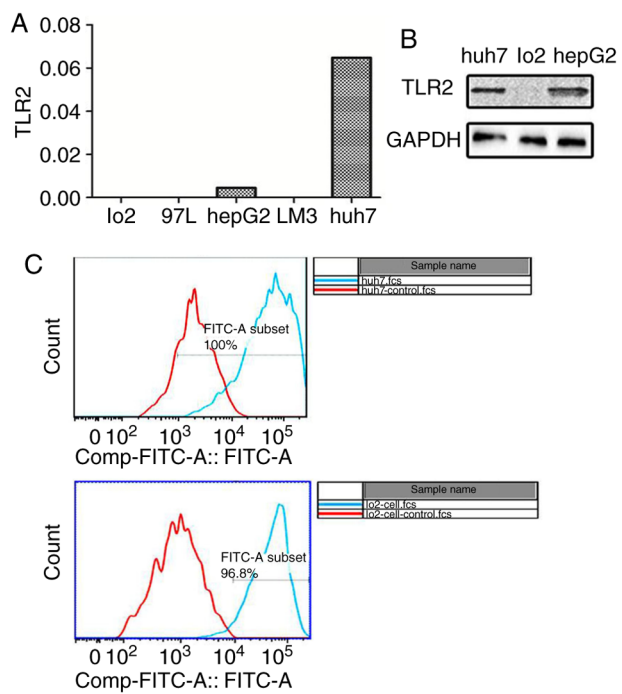


Figure S2. (A) Expression of molecules involved in the TLR2 signaling pathway (IRAK1, NF- κ B, TRAF6, MYD88) in B76/Huh7 cells following stimulation with Pam3CSK4 for 0, 24, 48 and 72 h. (B) Relative protein expression levels in B76/Huh7 cells following stimulation with Pam3CSK4. IRAK1, interleukin 1 receptor associated kinase 1; NF- κ B, nuclear factor- κ B; TRAF6, TNF receptor associated factor 6; TLR, Toll-like receptor 2; MyD88, myeloid differentiation factor 88.

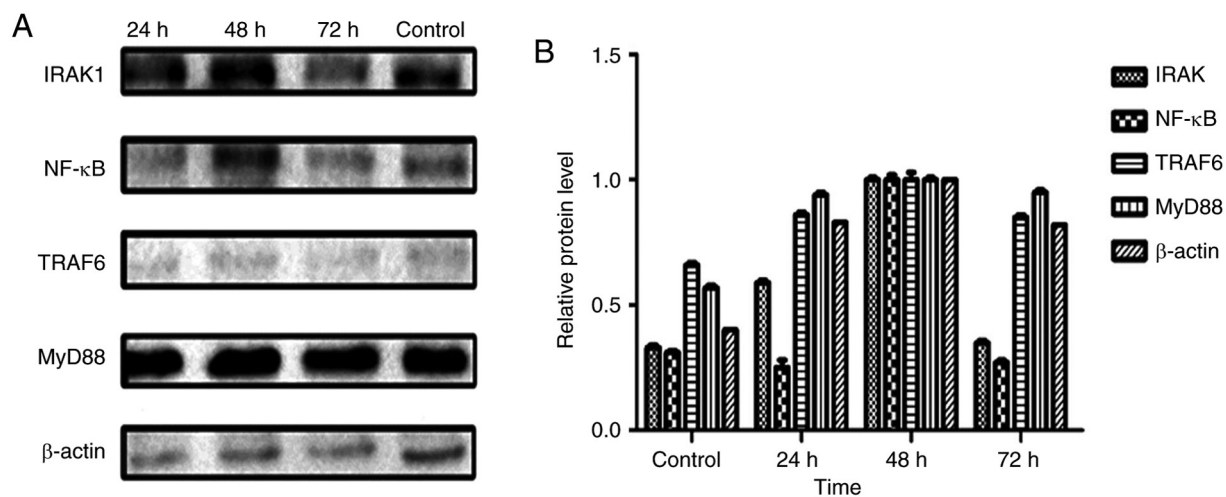


Figure S3. Images of B76/Huh7 cells transfected with TLR2, a scrambled plasmid or a control under a fluorescence microscope. Magnification, x100. The three left images are of cells stimulated with Pam3CSK4 and the three right are unstimulated cells, in each group. TLR, Toll-like receptor 2.

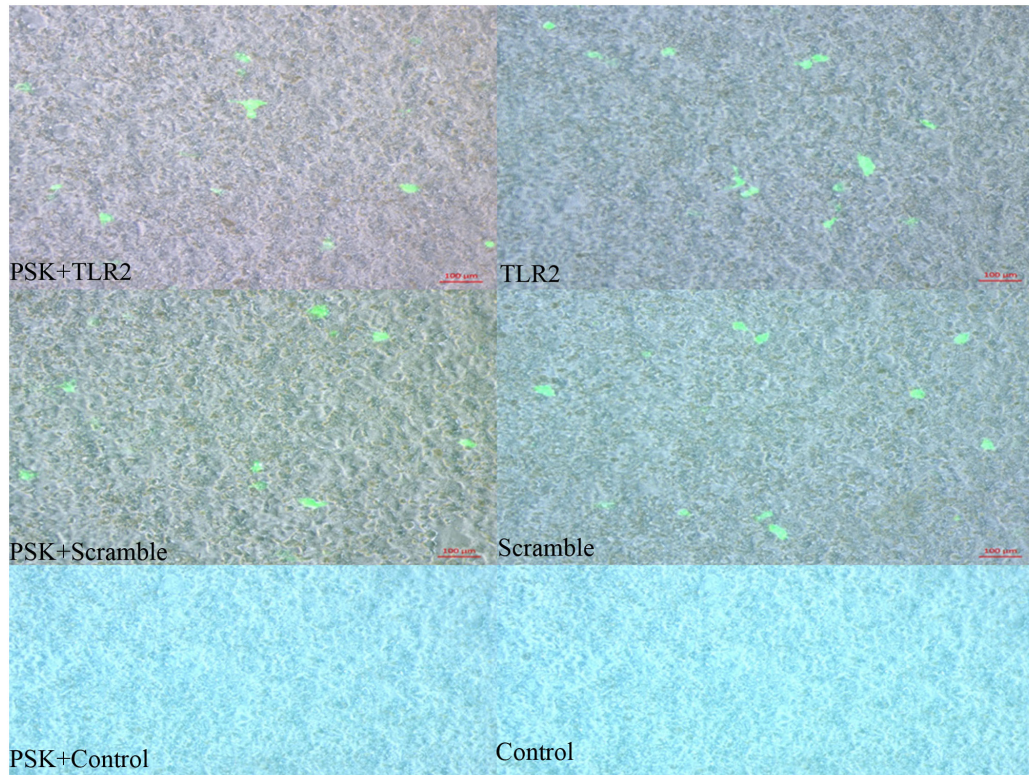


Figure S4. Images of B76/Huh7 cells transfected with the MyD88 plasmid, a scrambled plasmid or a control under a fluorescence microscope. Magnification, x100. The three left images are of cells stimulated with Pam3CSK4 and the three right are unstimulated cells, in each group. MyD88, myeloid differentiation factor 88.

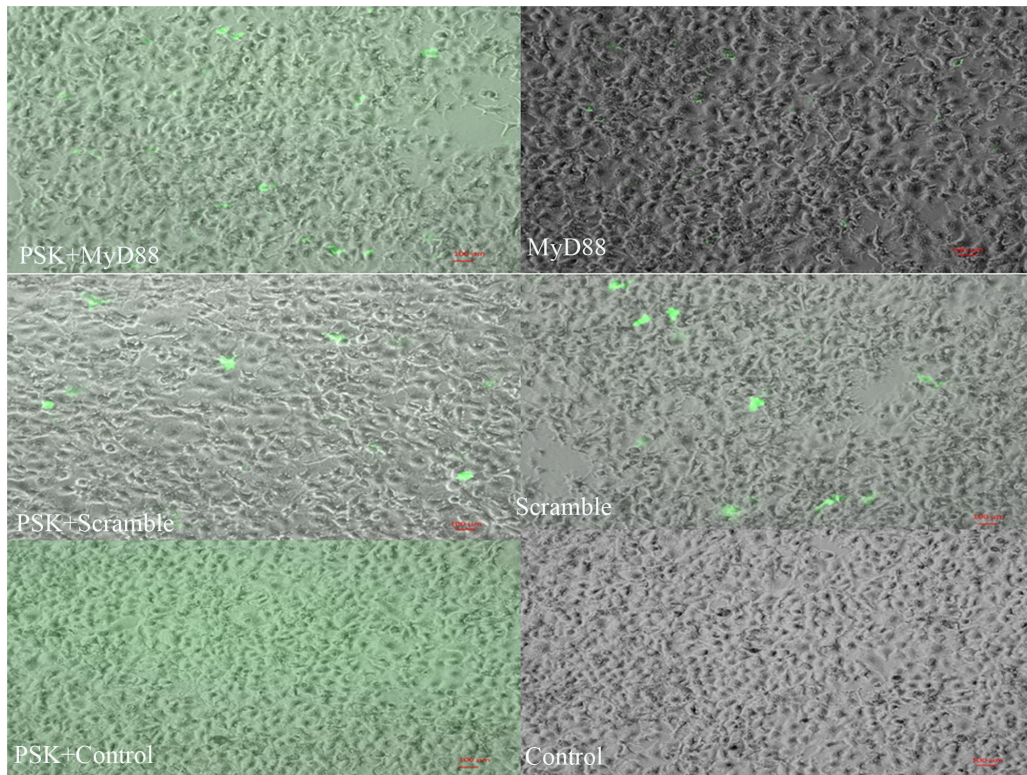


Table SI. Association of TLR2 expression and HCC patient preoperative clinical features.

Clinicopathological variables	TLR2 expression		P-value
	Low	High	
Sex			0.538
Male	49	76	
Female	5	11	
Age (years)			0.866
<55	34	56	
≥55	20	31	
AFP (ng/ml)			0.604
<400 ng/ml	28	49	
≥400 ng/ml	26	38	
HBV-DNA			0.186
<1,000	22	26	
≥1,000	32	61	
Tumor number			0.956
Single	47	76	
Multiple	7	11	
Tumor size (cm)			0.489
<5	15	29	
≥5	39	58	
Tumor differentiation			0.916
I-II	12	20	
III-IV	42	67	
BCLC stage			0.862
0-A	15	23	
B-C	39	64	

AFP, α -fetoprotein; BCLC, Barcelona Clinic Liver Cancer; TLR2, Toll-like receptor 2; HCC, hepatocarcinoma.