

Figure S1. Kaplan-Meier plots showing the prognostic values of *ANLN* and *KDR* in different sample cohorts. Kaplan-Meier plots show the prognostic value of *ANLN* in (A) all breast cancer samples, (B) ER-HER2⁻ breast cancer samples and (C) ER⁺HER2⁺ breast cancer samples. Kaplan-Meier plots show the prognostic value of *KDR* in (D) all breast cancer samples, (E) ER-HER2⁻ breast cancer samples and (F) ER⁺HER2⁺ breast cancer samples. Kaplan-Meier plots were computed using the online tool Kaplan-Meier Plotter (62). *ANLN*, anillin actin-binding protein; *KDR*, kinase insert domain receptor; ER, estrogen receptor; HER2, human epidermal growth factor receptor 2.

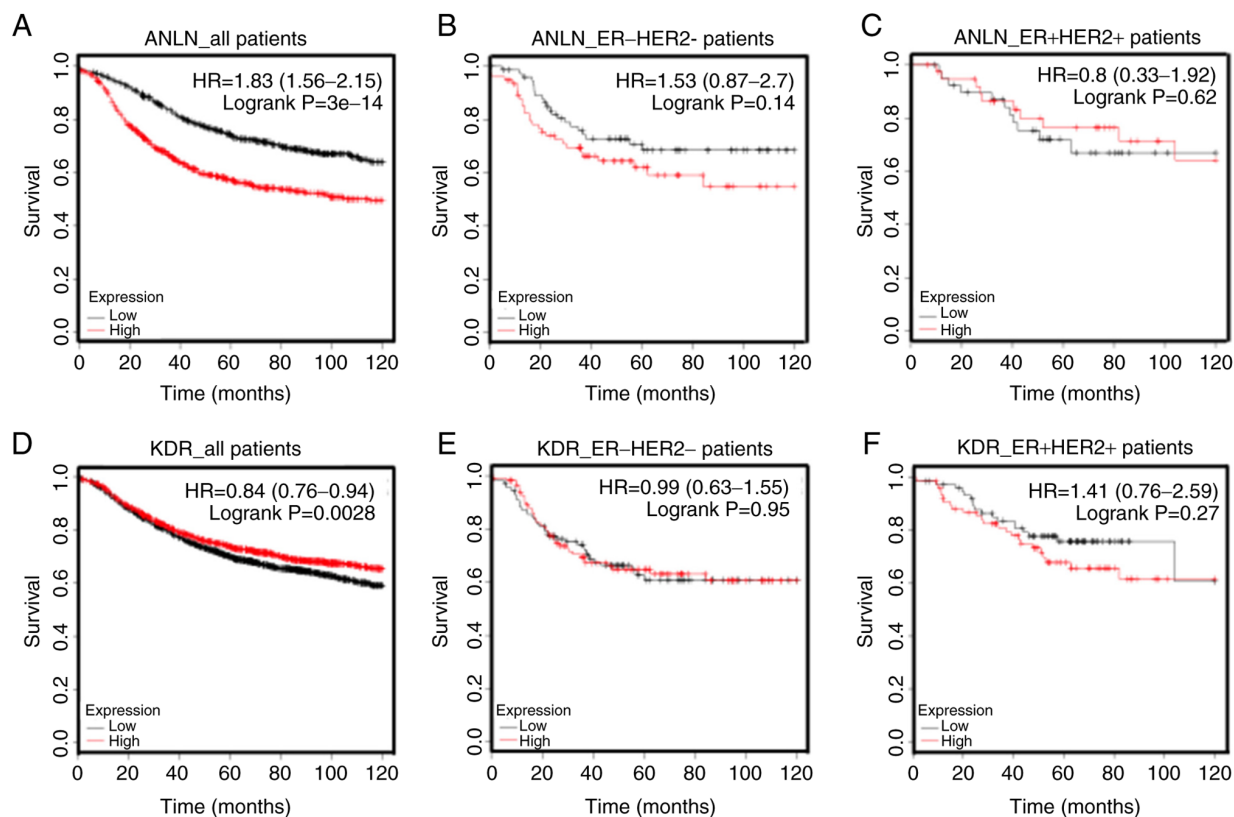


Table SI. sgRNAs designed for regulating *ANLN* and *KDR*.

Gene	Direction	sgRNA target sequence	Genomic location in coding sequence
<i>ANLN</i>	Activation	5'- CCACCCCGCGGCGAGGG CTG-3'	326 bp upstream of start codon
<i>KDR</i>	Activation	5'- GCCTCCGCGCTCTAGAG TTT-3'	324 bp upstream of start codon
<i>KDR</i>	Repression	5'- TGTGGCTCTGCGTGGAG ACC-3'	29 bp downstream of start codon
<i>ANLN</i>	Repression	5'- GAAGATTCTCTCGCCTG GCA-3'	38 bp downstream of start codon

ANLN, anillin actin-binding protein; *KDR*, kinase insert domain receptor.

Table SII. Primers used in reverse transcription-quantitative PCR.

Gene	Forward primer (5'-3')	Reverse primer(5'-3')
<i>ANLN</i>	TGTTCTGGACAAGGTCCCCT	ACACCATCTTCGATGCCAGG
<i>KDR</i>	ATGCATCCTTGCAGGACCAA	GGTTTCCTGTGATCGTGGGT
<i>GAPDH</i>	CCCACTCCTCCACCTTTGAC	ATGAGGTCCACCACCCTGTT

ANLN, anillin actin-binding protein; *KDR*, kinase insert domain receptor.

Table SIII. KEGG annotations of genes with expression quantitatively associated with the four identified disease-associated single nucleotide polymorphisms.

ENTREZ ID	Gene symbol	Gene name	KEGG pathway
100	ADA	Adenosine deaminase	hsa00230;hsa01100;hsa05340
10010	TANK	TRAF family member associated NF- κ B activator	hsa04621;hsa04622
10038	PARP2	Poly(ADP-ribose) polymerase 2	hsa03410;hsa04210;hsa04217
10197	PSME3	Proteasome activator subunit 3	hsa03050;hsa04612;hsa05160
10235	RASGRP2	RAS guanyl releasing protein 2	hsa04010;hsa04014;hsa04015;hsa04062;hsa04611;hsa05200
10241	CALCOCO2	Calcium binding and coiled-coil domain 2	hsa04137
10248	POP7	POP7 homolog, ribonuclease P/MRP subunit	hsa03008;hsa03013
10332	CLEC4M	C-type lectin domain family 4 member M	hsa04145;hsa04625;hsa05152;hsa05162
10347	ABCA7	ATP binding cassette subfamily A member 7	hsa02010
10382	TUBB4A	Tubulin β 4A class IVa	hsa04145;hsa04540;hsa05130
10419	PRMT5	Protein arginine methyltransferase 5	hsa03013
10507	SEMA4D	Semaphorin 4D	hsa04360
10535	RNASEH2A	Ribonuclease H2 subunit A	hsa03030
10544	PROCR	Protein C receptor	hsa04610
10557	RPP38	Ribonuclease P/MRP subunit p38	hsa03008;hsa03013
10572	SIVA1	SIVA1 apoptosis inducing factor	hsa04115

10603	SH2B2	SH2B adaptor protein 2	hsa04722;hsa04910
10621	POLR3F	RNA polymerase III subunit F	hsa00230;hsa00240;hsa01100;hsa03020;hsa04623
10622	POLR3G	RNA polymerase III subunit G	hsa00230;hsa00240;hsa01100;hsa03020;hsa04623
1071	CETP	Cholesteryl ester transfer protein	hsa04979
1075	CTSC	Cathepsin C	hsa04142;hsa04210
10758	TRAF3IP2	TRAF3 interacting protein 2	hsa04218;hsa04657
10898	CPSF4	Cleavage and polyadenylation specific factor 4	hsa03015;hsa05164
10929	SRSF8	Serine and arginine-rich splicing factor 8	hsa03040;hsa05168
10948	STARD3	Star related lipid transfer domain-containing 3	hsa04979
10960	LMAN2	Lectin, mannose-binding 2	hsa04141
11019	LIAS	Lipoic acid synthetase	hsa00785;hsa01100
11200	CHEK2	Checkpoint kinase 2	hsa04110;hsa04115;hsa04218;hsa05166
11222	MRPL3	Mitochondrial ribosomal protein L3	hsa03010
114548	NLRP3	NLR family pyrin domain-containing 3	hsa04217;hsa04621;hsa04625;hsa05133;hsa05164
114879	OSBPL5	Oxysterol-binding protein like 5	hsa04979
115650	TNFRSF13C	TNF receptor superfamily member 13C	hsa04060;hsa04064;hsa04672;hsa05166;hsa05340
117	ADCYAP1R1	ADCYAP receptor type I 1	hsa04024;hsa04080;hsa04713;hsa04911;hsa04924
118672	PSTK	Phosphoseryl-tRNA kinase	hsa00450;hsa00970
119765	OR4B1	Olfactory receptor family 4 subfamily B member 1	hsa04740

1208	CLPS	Colipase	hsa04975
1215	CMA1	Chymase 1	hsa04614
124540	MSI2	Musashi RNA-binding protein 2	hsa03015
1269	CNR2	Cannabinoid receptor 2	hsa04080
127281	PRXL2B	Peroxiredoxin like 2B	hsa00590;hsa01100
1297	COL9A1	Collagen type IX α 1 chain	hsa04151;hsa04510;hsa04512;hsa04974;hsa05165
1387	CREBBP	CREB-binding protein	hsa04024;hsa04066;hsa04068;hsa04110;hsa04310;hsa04330;hsa04350;hsa04520;hsa04630;hsa04720;hsa04916;hsa04919;hsa04922;hsa05016;hsa05152;hsa05161;hsa05164;hsa05165;hsa05166;hsa05167;hsa05168;hsa05200;hsa05203;hsa05206;hsa05211;hsa05215
1388	ATF6B	Activating transcription factor 6β	hsa04022;hsa04141;hsa04151;hsa04211;hsa04261;hsa04668;hsa04728;hsa04911;hsa04915;hsa04918;hsa04925;hsa04926;hsa04927;hsa04928;hsa04934;hsa05030;hsa05031;hsa05034;hsa05161;hsa05163;hsa05166;hsa05203
140	ADORA3	Adenosine A3 receptor	hsa04022;hsa04071;hsa04080
140838	NANP	N-acetylneuraminic acid phosphatase	hsa00520;hsa01100
1410	CRYAB	Crystallin alpha B	hsa04141;hsa04213
143	PARP4	Poly(ADP-ribose) polymerase family member 4	hsa03410;hsa04210;hsa04217
143471	PSMA8	Proteasome subunit α 8	hsa03050
146	ADRA1D	Adrenoceptor α 1D	hsa04020;hsa04022;hsa04080;hsa04261;hsa04270;hsa04970

1479	CSTF3	Cleavage stimulation factor subunit 3	hsa03015
1500	CTNND1	Catenin δ 1	hsa04015;hsa04520;hsa04670
1503	CTPS1	CTP synthase 1	hsa00240;hsa01100
1511	CTSG	Cathepsin G	hsa04080;hsa04142;hsa04614;hsa05146;hsa05322
155066	ATP6V0E2	ATPase H ⁺ transporting V0 subunit e2	hsa00190;hsa01100;hsa04145;hsa04721;hsa04966;hsa05110;hsa05120;hsa05165;hsa05323
160287	LDHAL6A	Lactate dehydrogenase A like 6A	hsa00010;hsa00270;hsa00620;hsa00640;hsa01100;hsa04922
1610	DAO	D-amino acid oxidase	hsa00260;hsa00330;hsa00472;hsa01100;hsa04146
1633	DCK	Deoxycytidine kinase	hsa00230;hsa00240;hsa01100
1647	GADD45A	Growth arrest and DNA damage inducible α	hsa04010;hsa04068;hsa04110;hsa04115;hsa04210;hsa04218;hsa05169;hsa05200;hsa05202;hsa05210;hsa05212;hsa05213;hsa05214;hsa05216;hsa05217;hsa05218;hsa05220;hsa05222;hsa05223;hsa05224;hsa05225;hsa05226
1654	DDX3X	DEAD-box helicase 3 X-linked	hsa04622;hsa05161;hsa05203
166336	PRICKLE2	Prickle planar cell polarity protein 2	hsa04310
1665	DHX15	DEAH-box helicase 15	hsa03040
171558	PTCRA	Pre T cell antigen receptor α	hsa04330;hsa05202
1717	DHCR7	7-dehydrocholesterol reductase	hsa00100;hsa01100
1730	DIAPH2	Diaphanous-related formin 2	hsa04810
1736	DKC1	Dyskerin pseudouridine synthase 1	hsa03008

1812	DRD1	Dopamine receptor D1	hsa04020;hsa04024;hsa04080;hsa04540;hsa04728;hsa05012;hsa05030;hsa05031;hsa05032;hsa05034
1852	DUSP9	Dual specificity phosphatase 9	hsa04010;hsa04550
1903	S1PR3	Sphingosine-1-phosphate receptor 3	hsa04071;hsa04080
191	AHCY	Adenosylhomocysteinase	hsa00270;hsa01100
1948	EFNB2	Ephrin B2	hsa04360
1982	EIF4G2	Eukaryotic translation initiation factor 4 γ 2	hsa03013;hsa05416
1994	ELAVL1	ELAV-like RNA-binding protein 1	hsa04152;hsa04657
2006	ELN	Elastin	hsa04974
2010	EMD	Emerin	hsa05410;hsa05412;hsa05414
204	AK2	Adenylate kinase 2	hsa00230;hsa00730;hsa01100
204962	SLC44A5	Solute carrier family 44 member 5	hsa05231
2060	EPS15	Epidermal growth factor receptor pathway substrate 15	hsa04144
2066	ERBB4	Erb-b2 receptor tyrosine kinase 4	hsa04010;hsa04012;hsa04020;hsa04151;hsa05205
2132	EXT2	Exostosin glycosyltransferase 2	hsa00534;hsa01100
2145	EZH1	Enhancer of zeste 1 polycomb repressive complex 2 subunit	hsa00310
2176	FANCC	FA complementation group C	hsa03460
2208	FCER2	Fc fragment of IgE receptor II	hsa04640;hsa05169
221178	SPATA13	Spermatogenesis-associated 13	hsa04810
221830	TWISTNB	TWIST neighbor	hsa00230;hsa00240;hsa01100;hsa03020
2237	FEN1	Flap structure-specific	hsa03030;hsa03410;hsa03450

		endonuclease 1	
2243	FGA	Fibrinogen α chain	hsa04610;hsa04611
2244	FGB	Fibrinogen β chain	hsa04610;hsa04611
2260	FGFR1	Fibroblast growth factor receptor 1	hsa04010;hsa04014;hsa04015;hsa04151;hsa04520;hsa04550;hsa04714;hsa04810;hsa04928;hsa05200;hsa05205;hsa05215;hsa05218;hsa05224;hsa05230
2266	FGG	Fibrinogen γ chain	hsa04610;hsa04611;hsa05150
22800	RRAS2	RAS-related 2	hsa04010;hsa04014;hsa04024;hsa04072;hsa04137;hsa04140;hsa04218;hsa04371;hsa04625;hsa04810;hsa05205
22808	MRAS	Muscle RAS oncogene homolog	hsa04010;hsa04014;hsa04015;hsa04072;hsa04137;hsa04140;hsa04218;hsa04371;hsa04625;hsa04810;hsa05205
22876	INPP5F	Inositol polyphosphate-5-phosphatase F	hsa00562;hsa01100;hsa04070
22894	DIS3	DIS3 homolog, exosome endoribonuclease and 3'-5' exoribonuclease	hsa03018
22908	SACM1L	SAC1-like phosphatidylinositide phosphatase	hsa00562;hsa01100;hsa04070
22985	ACIN1	Apoptotic chromatin condensation-inducer 1	hsa03013;hsa03015;hsa03040
23171	GPD1L	Glycerol-3-phosphate dehydrogenase 1 like	hsa00564
23207	PLEKHM2	Pleckstrin homology and RUN domain-containing M2	hsa05132
23451	SF3B1	Splicing factor 3b subunit 1	hsa03040

23475	QPRT	Quinolate phosphoribosyltransferase	hsa00760;hsa01100
23547	LILRA4	Leukocyte immunoglobulin- like receptor A4	hsa04380
23590	PDSS1	Decaprenyl diphosphate synthase subunit 1	hsa00900
23708	GSPT2	G1 to S phase transition 2	hsa03015
240	ALOX5	Arachidonate 5-lipoxygenase	hsa00590;hsa01100;hsa04664;hsa04726;hsa04913;hsa05145
2521	FUS	FUS RNA-binding protein	hsa05202
2526	FUT4	Fucosyltransferase 4	hsa00515;hsa00601;hsa01100
2556	GABRA3	γ -aminobutyric acid type A receptor α 3 subunit	hsa04080;hsa04723;hsa04727;hsa04742;hsa05032;hsa05033
255967	PAN3	Poly(A)-specific ribonuclease subunit PAN3	hsa03018
2568	GABRP	γ -aminobutyric acid type A receptor π subunit	hsa04080;hsa04723;hsa04727;hsa05032;hsa05033
25804	LSM4	LSM4 homolog, U6 small nuclear RNA and mRNA degradation-associated	hsa03018;hsa03040
259292	TAS2R46	Taste 2 receptor member 46	hsa04742
2595	GANC	Glucosidase α , neutral C	hsa00052;hsa00500;hsa01100
25981	DNAH1	Dynein axonemal heavy chain 1	hsa05016
26281	FGF20	Fibroblast growth factor 20	hsa04010;hsa04014;hsa04015;hsa04151;hsa04810;hsa05200;hsa05218;hsa05224;hsa05226
26285	CLDN17	Claudin 17	hsa04514;hsa04530;hsa04670;hsa05160
2650	GCNT1	Glucosaminyl (N-acetyl) transferase 1, core 2	hsa00512;hsa01100

27068	PPA2	Pyrophosphatase (inorganic) 2	hsa00190
27094	KCNMB3	Potassium calcium-activated channel subfamily M regulatory beta subunit 3	hsa04022;hsa04270;hsa04911
2712	GK2	Glycerol kinase 2	hsa00561;hsa01100;hsa03320
27302	BMP10	Bone morphogenetic protein 10	hsa04060
2731	GLDC	Glycine decarboxylase	hsa00260;hsa00630;hsa01100;hsa01200
27334	P2RY10	P2Y receptor family member 10	hsa04080
2782	GNB1	G protein subunit β 1	hsa04014;hsa04062;hsa04151;hsa04371;hsa04713;hsa04723;hsa04724;hsa04725;hsa04726;hsa04727;hsa04728;hsa04740;hsa04744;hsa04926;hsa05032;hsa05034;hsa05163;hsa05167;hsa05170;hsa05200
2798	GNRHR	Gonadotropin-releasing hormone receptor	hsa04080;hsa04912
2829	XCR1	X-C motif chemokine receptor 1	hsa04060;hsa04062
283871	PGP	Phosphoglycolate phosphatase	hsa00630;hsa01100;hsa01200
2862	MLNR	Motilin receptor	hsa04080
287	ANK2	Ankyrin 2	hsa05205
2870	GRK6	G protein-coupled receptor kinase 6	hsa04062;hsa04144;hsa05032
2894	GRID1	Glutamate ionotropic receptor delta type subunit 1	hsa04080
29072	SETD2	SET domain-containing 2	hsa00310
29078	NDUFAF4	NADH:ubiquinone oxidoreductase complex assembly factor 4	hsa04714

2923	PDIA3	Protein disulfide isomerase family A member 3	hsa04141;hsa04612;hsa05163;hsa05169;hsa05170
2947	GSTM3	Glutathione S-transferase μ 3	hsa00480;hsa00980;hsa00982;hsa00983;hsa01524;hsa05200;hsa05204;hsa05225;hsa05418
2957	GTF2A1	General transcription factor IIA subunit 1	hsa03022;hsa05203
2984	GUCY2C	Guanylate cyclase 2C	hsa00230
29929	ALG6	ALG6, alpha-1,3-glucosyltransferase	hsa00510;hsa01100
3015	H2AFZ	H2A histone family member Z	hsa04217;hsa05034;hsa05322
3053	SERPIND1	Serpin family D member 1	hsa04610
30815	ST6GALNA C6	ST6 N-acetylgalactosaminide alpha-2,6-sialyltransferase 6	hsa00604;hsa01100
3082	HGF	Hepatocyte growth factor	hsa01521;hsa04010;hsa04014;hsa04015;hsa04151;hsa04510;hsa05144;hsa05200;hsa05205;hsa05211;hsa05218;hsa05225;hsa05226
30834	ZNRD1	Zinc ribbon domain-containing 1	hsa00230;hsa00240;hsa01100;hsa03020
30835	CD209	CD209 molecule	hsa04145;hsa04625;hsa05152;hsa05162
31	ACACA	Acetyl-coA carboxylase α	hsa00061;hsa00620;hsa00640;hsa01100;hsa01212;hsa04152;hsa04910;hsa04922
3156	HMGCR	3-hydroxy-3-methylglutaryl-coA reductase	hsa00900;hsa01100;hsa04152;hsa04976
317749	DHRS4L2	Dehydrogenase/reductase 4 like 2	hsa00830;hsa01100
3183	HNRNPC	Heterogeneous nuclear ribonucleoprotein C (C1/C2)	hsa03040

3251	HPRT1	Hypoxanthine phosphoribosyltransferase 1	hsa00230;hsa00983;hsa01100
326	AIRE	Autoimmune regulator	hsa04120;hsa05340
328	APEX1	Apurinic/aprimidinic endodeoxyribonuclease 1	hsa03410
3304	HSPA1B	Heat shock protein family A (Hsp70) member 1B	hsa03040;hsa04010;hsa04141;hsa04144;hsa04213;hsa04612;hsa04915;hsa05134;hsa05145;hsa05162;hsa05164
337876	CHSY3	Chondroitin sulfate synthase 3	hsa00532;hsa01100
3385	ICAM3	Intercellular adhesion molecule 3	hsa04514
340665	CYP26C1	Cytochrome P450 family 26 subfamily C member 1	hsa00830;hsa01100
3421	IDH3G	Isocitrate dehydrogenase 3 (NAD(+)) γ	hsa00020;hsa01100;hsa01200;hsa01210;hsa01230
343169	OR6F1	Olfactory receptor family 6 subfamily F member 1	hsa04740
3455	IFNAR2	Interferon α and β receptor subunit 2	hsa04060;hsa04151;hsa04217;hsa04380;hsa04620;hsa04621;hsa04630;hsa04650;hsa05160;hsa05162;hsa05164;hsa05165;hsa05167;hsa05168;hsa05169;hsa05200
348995	NUP43	Nucleoporin 43	hsa03013
3561	IL2RG	Interleukin 2 receptor subunit γ	hsa04060;hsa04144;hsa04151;hsa04630;hsa04658;hsa04659;hsa05162;hsa05166;hsa05200;hsa05321;hsa05340
3562	IL3	Interleukin 3	hsa04060;hsa04151;hsa04210;hsa04630;hsa04640;hsa04664;hsa05200;hsa05202;hsa05221;hsa05310
359	AQP2	Aquaporin 2	hsa04962

3597	IL13RA1	Interleukin 13 receptor subunit α 1	hsa04060;hsa04630;hsa05200
3603	IL16	Interleukin 16	hsa04060
3613	IMPA2	Inositol monophosphatase 2	hsa00562;hsa01100;hsa04070
3620	IDO1	Indoleamine 2,3-dioxygenase 1	hsa00380;hsa01100;hsa05143
3706	ITPKA	Inositol-trisphosphate 3-kinase A	hsa00562;hsa01100;hsa04020;hsa04070
3716	JAK1	Janus kinase 1	hsa01521;hsa04151;hsa04217;hsa04380;hsa04550;hsa04621;hsa04630;hsa04658;hsa04659;hsa05140;hsa05145;hsa05152;hsa05160;hsa05161;hsa05162;hsa05163;hsa05164;hsa05165;hsa05166;hsa05167;hsa05168;hsa05169;hsa05200;hsa05203;hsa05212
3766	KCNJ10	Potassium voltage-gated channel subfamily J member 10	hsa04971
3767	KCNJ11	Potassium voltage-gated channel subfamily J member 11	hsa04911;hsa04930
3770	KCNJ14	Potassium voltage-gated channel subfamily J member 14	hsa04725;hsa04921
378884	NHLRC1	NHL repeat-containing E3 ubiquitin protein ligase 1	hsa04120
381	ARF5	ADP ribosylation factor 5	hsa04144
3816	KLK1	Kallikrein 1	hsa04614;hsa04961
388753	COA6	Cytochrome <i>c</i> oxidase assembly factor 6	hsa04714
390077	OR52N2	Olfactory receptor family 52 subfamily N member 2	hsa04740

3916	LAMP1	Lysosomal-associated membrane protein 1	hsa04140;hsa04142;hsa04145;hsa05152
392255	GDF6	Growth differentiation factor 6	hsa04060;hsa04350;hsa04390
3925	STMN1	Stathmin 1	hsa04010;hsa05206
394	ARHGAP5	Rho GTPase-activating protein 5	hsa04510;hsa04670
397	ARHGDIB	Rho GDP dissociation inhibitor β	hsa04722;hsa04962
403239	OR2T27	Olfactory receptor family 2 subfamily T member 27	hsa04740
4050	LTB	Lymphotoxin β	hsa04060;hsa04064;hsa05323
4116	MAGOH	Mago homolog, exon junction complex subunit	hsa03013;hsa03015;hsa03040
414062	CCL3L3	C-C motif chemokine ligand 3 like 3	hsa04060;hsa04062;hsa04620;hsa05132;hsa05142;hsa05163;hsa05323
4141	MARS	Methionyl-tRNA synthetase	hsa00450;hsa00970
415117	STX19	Syntaxin 19	hsa04130
4224	MEP1A	Meprin A subunit α	hsa04974
4257	MGST1	Microsomal glutathione S-transferase 1	hsa00480;hsa00980;hsa00982;hsa00983;hsa01524;hsa05200;hsa05204;hsa05225;hsa05418
4326	MMP17	Matrix metalloproteinase 17	hsa04928
440093	H3F3C	H3 histone family member 3C	hsa05034;hsa05202;hsa05322
442361	OR2A2	Olfactory receptor family 2 subfamily A member 2	hsa04740
4502	MT2A	Metallothionein 2A	hsa04978
4726	NDUFS6	NADH:ubiquinone oxidoreductase subunit S6	hsa00190;hsa01100;hsa04714;hsa04723;hsa04932;hsa05010;hsa05012;hsa05016
4756	NEO1	Neogenin 1	hsa04514
4780	NFE2L2	Nuclear factor, erythroid 2 like	hsa04141;hsa05200;hsa05225;hsa0

		2	5418
4802	NFYC	Nuclear transcription factor Y subunit γ	hsa04612;hsa05152
4886	NPY1R	Neuropeptide Y receptor Y1	hsa04024;hsa04080;hsa04923
4889	NPY5R	Neuropeptide Y receptor Y5	hsa04080
5018	OXA1L	OXA1L, mitochondrial inner membrane protein	hsa03060
5023	P2RX1	Purinergic receptor P2X 1	hsa04020;hsa04080;hsa04611
5026	P2RX5	Purinergic receptor P2X 5	hsa04020;hsa04080
5050	PAFAH1B3	Platelet-activating factor acetylhydrolase 1b catalytic subunit 3	hsa00565;hsa01100
5079	PAX5	Paired box 5	hsa05202
50835	TAS2R9	Taste 2 receptor member 9	hsa04742
50838	TAS2R13	Taste 2 receptor member 13	hsa04742
51013	EXOSC1	Exosome component 1	hsa03018
51028	VPS36	Vacuolar protein-sorting 36 homolog	hsa04144
5106	PCK2	Phosphoenolpyruvate carboxykinase 2, mitochondrial	hsa00010;hsa00020;hsa00620;hsa01100;hsa03320;hsa04068;hsa04151;hsa04152;hsa04910;hsa04920;hsa04922;hsa04931;hsa04964
51069	MRPL2	Mitochondrial ribosomal protein L2	hsa03010
51073	MRPL4	Mitochondrial ribosomal protein L4	hsa03010
51091	SEPSECS	Sep (O-phosphoserine) tRNA:Sec (selenocysteine) tRNA synthase	hsa00450;hsa00970

51128	SAR1B	Secretion-associated Ras-related GTPase 1B	hsa04141;hsa05134
51363	CHST15	Carbohydrate sulfotransferase 15	hsa00532
51365	PLA1A	Phospholipase A1 member A	hsa04014
51421	AMOTL2	Angiomotin-like 2	hsa04530
51433	ANAPC5	Anaphase-promoting complex subunit 5	hsa04110;hsa04114;hsa04120;hsa04657;hsa04914;hsa05166
51434	ANAPC7	Anaphase-promoting complex subunit 7	hsa04110;hsa04114;hsa04120;hsa04914;hsa05166
5148	PDE6G	Phosphodiesterase 6G	hsa00230;hsa04744
51503	CWC15	CWC15 spliceosome-associated protein homolog	hsa03040
5152	PDE9A	Phosphodiesterase 9A	hsa00230
51645	PPIL1	Peptidylprolyl isomerase-like 1	hsa03040
51706	CYB5R1	Cytochrome b5 reductase 1	hsa00520
51729	WBP11	WW domain binding protein 11	hsa03040
51738	GHRL	Ghrelin and obestatin prepropeptide	hsa04024
5192	PEX10	Peroxisomal biogenesis factor 10	hsa04146
5199	CFP	Complement factor properdin	hsa05168
5208	PFKFB2	6-phosphofructo-2-kinase/fructose-2,6-biphosphatase 2	hsa00051;hsa04152;hsa04919
5217	PFN2	Profilin 2	hsa04015;hsa04810;hsa05131;hsa05132
5305	PIP4K2A	Phosphatidylinositol-5-phosphate 4-kinase type 2 α	hsa00562;hsa01100;hsa04070;hsa04810
53342	IL17D	Interleukin 17D	hsa04060;hsa04625;hsa04630;hsa0

			4657;hsa04659
5409	PNMT	Phenylethanolamine N-methyltransferase	hsa00350;hsa01100
5411	PNN	Pinin, desmosome-associated protein	hsa03013;hsa03015
5413	5-Sep	Septin 5	hsa05012
5414	4-Sep	Septin 4	hsa04210;hsa04215
5425	POLD2	DNA polymerase δ 2, accessory subunit	hsa00230;hsa00240;hsa01100;hsa03030;hsa03410;hsa03420;hsa03430;hsa03440
5427	POLE2	DNA polymerase ϵ 2, accessory subunit	hsa00230;hsa00240;hsa01100;hsa03030;hsa03410;hsa03420
5437	POLR2H	RNA polymerase II subunit H	hsa00230;hsa00240;hsa01100;hsa03020;hsa04623;hsa05016
5438	POLR2I	RNA polymerase II subunit I	hsa00230;hsa00240;hsa01100;hsa03020;hsa05016
54433	GAR1	GAR1 ribonucleoprotein	hsa03008
54474	KRT20	Keratin 20	hsa04915
54802	TRIT1	tRNA isopentenyltransferase 1	hsa01100
55127	HEATR1	HEAT repeat-containing 1	hsa03008
55168	MRPS18A	Mitochondrial ribosomal protein S18A	hsa03010
55193	PBRM1	Polybromo 1	hsa05225
55217	TMLHE	Trimethyllysine hydroxylase, ϵ	hsa00310
55229	PANK4	Pantothenate kinase 4	hsa00770;hsa01100
5525	PPP2R5A	Protein phosphatase 2 regulatory subunit B' α	hsa03015;hsa04071;hsa04114;hsa04151;hsa04152;hsa04261;hsa04728;hsa05165
55578	SUPT20H	SPT20 homolog, SAGA complex component	hsa04140
55593	OTUD5	OTU deubiquitinase 5	hsa04622

55616	ASAP3	ArfGAP with SH3 domain, ankyrin repeat and PH domain 3	hsa04144;hsa04666
55740	ENAH	ENAH, actin-regulator	hsa04360;hsa04810
55750	AGK	Acylglycerol kinase	hsa00561;hsa01100
55753	OGDHL	Oxoglutarate dehydrogenase- like	hsa00020;hsa00310;hsa00380;hsa0 1100;hsa01200
5577	PRKAR2B	Protein kinase camp-dependent type II regulatory subunit β	hsa04910
5579	PRKCB	Protein kinase C β	hsa01521;hsa04010;hsa04012;hsa0 4014;hsa04015;hsa04020;hsa04062 ;hsa04064;hsa04066;hsa04070;hsa0 4071;hsa04150;hsa04270;hsa04310 ;hsa04370;hsa04510;hsa04540;hsa0 4650;hsa04662;hsa04666;hsa04670 ;hsa04713;hsa04720;hsa04723;hsa0 4724;hsa04725;hsa04726;hsa04727 ;hsa04728;hsa04730;hsa04750;hsa0 4911;hsa04912;hsa04916;hsa04918 ;hsa04919;hsa04921;hsa04925;hsa0 4928;hsa04931;hsa04933;hsa04960 ;hsa04961;hsa04970;hsa04971;hsa0 4972;hsa04973;hsa05031;hsa05032 ;hsa05140;hsa05143;hsa05146;hsa0 5161;hsa05163;hsa05164;hsa05170 ;hsa05200;hsa05205;hsa05206;hsa0 5214;hsa05223;hsa05225;hsa05231
55802	DCP1A	Decapping mRNA 1A	hsa03018
5588	PRKCQ	Protein kinase C θ	hsa04064;hsa04140;hsa04270;hsa0 4658;hsa04659;hsa04660;hsa04750 ;hsa04920;hsa04931;hsa05162
56171	DNAH7	Dynein axonemal heavy chain 7	hsa05016

56548	CHST7	Carbohydrate sulfotransferase 7	hsa00532
5686	PSMA5	Proteasome subunit α 5	hsa03050
5690	PSMB2	Proteasome subunit β 2	hsa03050
56915	EXOSC5	Exosome component 5	hsa03018
5693	PSMB5	Proteasome subunit β 5	hsa03050
5709	PSMD3	Proteasome 26S subunit, non-TPase 3	hsa03050;hsa05169
5714	PSMD8	Proteasome 26S subunit, non-ATPase 8	hsa03050;hsa05169
5721	PSME2	Proteasome-activator subunit 2	hsa03050;hsa04612
57216	VANGL2	VANGL planar cell polarity protein 2	hsa04310
5730	PTGDS	Prostaglandin D2 synthase	hsa00590;hsa01100
5732	PTGER2	Prostaglandin E receptor 2	hsa04024;hsa04080;hsa04750;hsa04924;hsa05163;hsa05200
57452	GALNT16	Polypeptide N-acetylgalactosaminyltransferase 16	hsa00512;hsa01100
57715	SEMA4G	Semaphorin 4G	hsa04360
57819	LSM2	LSM2 homolog, U6 small nuclear RNA and mRNA degradation-associated	hsa03018;hsa03040
5783	PTPN13	Protein tyrosine phosphatase, non-receptor type 13	hsa04210
5874	RAB27B	RAB27B, member RAS oncogene family	hsa04972

5881	RAC3	Rac family small GTPase 3	hsa04010;hsa04014;hsa04015;hsa04024;hsa04071;hsa04310;hsa04360;hsa04370;hsa04510;hsa04520;hsa04650;hsa04662;hsa04664;hsa04810;hsa05163;hsa05170;hsa05200;hsa05210;hsa05212;hsa05231;hsa05416;hsa05418
5900	RALGDS	Ral guanine nucleotide dissociation stimulator	hsa04014;hsa04015;hsa04072;hsa05200;hsa05210;hsa05212;hsa05231
5901	RAN	RAN, member RAS oncogene family	hsa03008;hsa03013;hsa05166
59067	IL21	Interleukin 21	hsa04060;hsa04630;hsa04659;hsa05321
5909	RAP1GAP	RAP1 GTPase-activating protein	hsa04015
5971	RELB	RELB proto-oncogene, NF- κ B subunit	hsa04010;hsa04064;hsa04380;hsa04625;hsa05166;hsa05169
5998	RGS3	Regulator of G protein signaling 3	hsa04360
6011	GRK1	G protein-coupled receptor kinase 1	hsa04062;hsa04144;hsa04744
60401	EDA2R	Ectodysplasin A2 receptor	hsa04060
6175	RPLP0	Ribosomal protein lateral stalk subunit P0	hsa03010
6184	RPN1	Ribophorin I	hsa00510;hsa01100;hsa04141
6201	RPS7	Ribosomal protein S7	hsa03010
6204	RPS10	Ribosomal protein S10	hsa03010
6259	RYK	Receptor-like tyrosine kinase	hsa04360
629	CFB	Complement factor B	hsa04610;hsa05150
6301	SARS	Seryl-tRNA synthetase	hsa00970
6358	CCL14	C-C motif chemokine ligand	hsa04060;hsa04062

6361	CCL17	C-C motif chemokine ligand 17	hsa04060;hsa04062;hsa04625;hsa04657
6366	CCL21	C-C motif chemokine ligand 21	hsa04060;hsa04062;hsa04064
637	BID	BH3-interacting domain death agonist	hsa01524;hsa04071;hsa04115;hsa04210;hsa04215;hsa04217;hsa04650;hsa04932;hsa05010;hsa05014;hsa05152;hsa05163;hsa05167;hsa05169;hsa05170;hsa05200;hsa05416
638	BIK	BCL2-interacting killer	hsa01522
63923	TNN	Tenascin N	hsa04151;hsa04510;hsa04512;hsa05165;hsa05206
64098	PARVG	Parvin γ	hsa04510
6428	SRSF3	Serine and arginine-rich splicing factor 3	hsa03040;hsa05168
64374	SIL1	SIL1 nucleotide exchange factor	hsa04141
64421	DCLRE1C	DNA cross-link repair 1C	hsa03450;hsa05340
64744	SMAP2	Small ArfGAP2	hsa04144
64802	NMNAT1	Nicotinamide nucleotide adenylyltransferase 1	hsa00760;hsa01100
6494	SIPA1	Signal-induced proliferation- associated 1	hsa04015;hsa04670
65005	MRPL9	Mitochondrial ribosomal protein L9	hsa03010
65108	MARCKSL1	MARCKS-like 1	hsa04666;hsa05140
6513	SLC2A1	Solute carrier family 2 member 1	hsa04066;hsa04911;hsa04919;hsa04920;hsa04922;hsa04931;hsa04976;hsa05166;hsa05200;hsa05211;hsa05230
652	BMP4	Bone morphogenetic protein 4	hsa04060;hsa04350;hsa04390;hsa04550;hsa04919;hsa05200;hsa05217

			;hsa05418
65220	NADK	NAD kinase	hsa00760;hsa01100
653604	HIST2H3D	Histone cluster 2 H3 family member d	hsa05034;hsa05202;hsa05322
6616	SNAP25	Synaptosome-associated protein 25	hsa04721;hsa04911
6652	SORD	Sorbitol dehydrogenase	hsa00040;hsa00051;hsa01100
6728	SRP19	Signal recognition particle 19	hsa03060
6742	SSBP1	Single-stranded DNA-binding protein 1	hsa03030;hsa03430;hsa03440
6753	SSTR3	Somatostatin receptor 3	hsa04080
6760	SS18	SS18, nBAF chromatin remodeling complex subunit	hsa05202
6817	SULT1A1	Sulfotransferase family 1A member 1	hsa05204
7124	TNF	Tumor necrosis factor	hsa01523;hsa04010;hsa04060;hsa04064;hsa04071;hsa04150;hsa04210;hsa04217;hsa04350;hsa04380;hsa04612;hsa04620;hsa04621;hsa04622;hsa04625;hsa04640;hsa04650;hsa04657;hsa04660;hsa04664;hsa04668;hsa04920;hsa04930;hsa04931;hsa04932;hsa04933;hsa04940;hsa05010;hsa05014;hsa05133;hsa05134;hsa05140;hsa05142;hsa05143;hsa05144;hsa05145;hsa05146;hsa05152;hsa05160;hsa05161;hsa05163;hsa05164;hsa05165;hsa05166;hsa05168;hsa05169;hsa05170;hsa05205;hsa05310;hsa05321;hsa05322;hsa05323;hsa05330;hsa05332;hsa05410;hsa05414;hsa05418

7175	TPR	Translocated promoter region, nuclear basket protein	hsa03013;hsa05200;hsa05216
7248	TSC1	TSC complex subunit 1	hsa04072;hsa04140;hsa04150;hsa04151;hsa04152;hsa04211;hsa04218;hsa04714;hsa04910;hsa05163;hsa05165;hsa05231
7272	TTK	TTK protein kinase	hsa04110
7311	UBA52	Ubiquitin A-52 residue ribosomal protein fusion product 1	hsa03010
732	C8B	Complement C8 β chain	hsa04610;hsa05020;hsa05146;hsa05322
7321	UBE2D1	Ubiquitin-conjugating enzyme E2 D1	hsa04120;hsa04141
7390	UROS	Uroporphyrinogen III synthase	hsa00860;hsa01100
7448	VTN	Vitronectin	hsa04151;hsa04510;hsa04512;hsa04610;hsa05165;hsa05205
7517	XRCC3	X-ray repair cross complementing 3	hsa03440
7531	YWHAE	Tyrosine 3-monooxygenase/tryptophan 5-monooxygenase activation protein epsilon	hsa04110;hsa04114;hsa04151;hsa04390;hsa04722;hsa05203
7535	ZAP70	ζ -chain of T cell receptor associated protein kinase 70	hsa04014;hsa04064;hsa04650;hsa04658;hsa04659;hsa04660;hsa05340
7786	MAP3K12	Mitogen-activated protein kinase kinase kinase 12	hsa04010
784	CACNB3	Calcium voltage-gated channel auxiliary subunit β 3	hsa04010;hsa04260;hsa04261;hsa04921;hsa05410;hsa05412;hsa05414
7841	MOGS	Mannosyl-oligosaccharide glucosidase	hsa00510;hsa01100;hsa04141

79017	GGCT	Gamma-glutamylcyclotransferase	hsa00480;hsa01100
79602	ADIPOR2	Adiponectin receptor 2	hsa04152;hsa04211;hsa04920;hsa04932
79644	SRD5A3	Steroid 5 α -reductase 3	hsa00140
79695	GALNT12	Polypeptide N-acetylgalactosaminyltransferase 12	hsa00512;hsa01100
79723	SUV39H2	Suppressor of variegation 3-9 homolog 2	hsa00310
79796	ALG9	ALG9, α -1,2-mannosyltransferase	hsa00510;hsa01100
79798	ARMC5	Armadillo repeat-containing 5	hsa04934
79799	UGT2A3	UDP glucuronosyltransferase family 2 member A3	hsa00040;hsa00053;hsa00140;hsa00830;hsa00860;hsa00980;hsa00982;hsa00983;hsa01100;hsa05204
80736	SLC44A4	Solute carrier family 44 member 4	hsa05231
81035	COLEC12	Collectin subfamily member 12	hsa04145
8106	PABPN1	Poly(A)-binding protein nuclear 1	hsa03015;hsa05164
811	CALR	Calreticulin	hsa04141;hsa04145;hsa04612;hsa05142;hsa05163;hsa05166;hsa05169;hsa05170
8115	TCL1A	T cell leukemia/lymphoma 1A	hsa04151
81168	OR8J3	Olfactory receptor family 8 subfamily J member 3	hsa04740
81696	OR5V1	Olfactory receptor family 5 subfamily V member 1	hsa04740

81849	ST6GALNA C5	ST6 N-acetylgalactosaminide α -2,6-sialyltransferase 5	hsa00604;hsa01100
8317	CDC7	Cell division cycle 7	hsa04110
83464	APH1B	Aph-1 homolog B, γ -secretase subunit	hsa04330;hsa05010
835	CASP2	Caspase 2	hsa04210
836	CASP3	Caspase 3	hsa01524;hsa04010;hsa04115;hsa04210;hsa04215;hsa04650;hsa04657;hsa04668;hsa04726;hsa04932;hsa04933;hsa05010;hsa05012;hsa05014;hsa05016;hsa05120;hsa05133;hsa05134;hsa05145;hsa05146;hsa05152;hsa05161;hsa05163;hsa05165;hsa05167;hsa05168;hsa05169;hsa05170;hsa05200;hsa05203;hsa05205;hsa05206;hsa05210;hsa05222;hsa05416
83732	RIOK1	RIO kinase 1	hsa03008
83756	TAS1R3	Taste 1 receptor member 3	hsa04742;hsa04973
83937	RASSF4	Ras-association domain family member 4	hsa04392
8398	PLA2G6	Phospholipase A2 group VI	hsa00564;hsa00565;hsa00590;hsa00591;hsa00592;hsa01100;hsa04014;hsa04270;hsa04666;hsa04750
84000	TMPRSS13	Transmembrane serine protease 13	hsa05164
8451	CUL4A	Cullin 4A	hsa03420;hsa04120;hsa05170
84769	MPV17L2	MPV17 mitochondrial inner membrane protein-like 2	hsa04146
8487	GEMIN2	Gem nuclear organelle- associated protein 2	hsa03013
84876	ORAI1	ORAI calcium release- activated calcium modulator 1	hsa04020;hsa04024;hsa04611;hsa04924;hsa04925;hsa04927;hsa04934

			;hsa05340
84890	ADO	2-aminoethanethiol dioxygenase	hsa00430;hsa01100
8528	DDO	D-aspartate oxidase	hsa00250;hsa04146
85414	SLC45A3	Solute carrier family 45 member 3	hsa05202;hsa05206
857	CAV1	Caveolin 1	hsa04144;hsa04510;hsa05100;hsa05205;hsa05416;hsa05418
859	CAV3	Caveolin 3	hsa04144;hsa04510;hsa05100;hsa05205;hsa05418
8625	RFXANK	Regulatory factor X associated ankyrin-containing protein	hsa04612;hsa05152;hsa05340
8645	KCNK5	Potassium two pore domain channel subfamily K member 5	hsa04742;hsa04974
8672	EIF4G3	Eukaryotic translation initiation factor 4 γ 3	hsa03013;hsa05416
8714	ABCC3	ATP-binding cassette subfamily C member 3	hsa01523;hsa02010;hsa04976
8723	SNX4	Sorting nexin 4	hsa04144
8833	GMPS	Guanine monophosphate synthase	hsa00230;hsa00983;hsa01100
8864	PER2	Period circadian regulator 2	hsa04710;hsa04713;hsa05168;hsa05202;hsa05221
8898	MTMR2	Myotubularin-related protein 2	hsa00562;hsa01100;hsa04070
90	ACVR1	Activin A receptor type 1	hsa04060;hsa04350;hsa04550;hsa05418
9039	UBA3	Ubiquitin-like modifier activating enzyme 3	hsa04120
9047	SH2D2A	SH2 domain-containing 2A	hsa04370
9103	FCGR2C	Fc fragment of IgG receptor IIc (gene/pseudogene)	hsa04145;hsa04380;hsa05140;hsa05150;hsa05152

9170	LPAR2	Lysophosphatidic acid receptor 2	hsa04015;hsa04072;hsa04080;hsa04151;hsa04810;hsa05200
91734	IDI2	Isopentenyl-diphosphate δ isomerase 2	hsa00900;hsa01100
9184	BUB3	BUB3, mitotic checkpoint protein	hsa04110;hsa05166
9187	SLC24A1	Solute carrier family 24 member 1	hsa04744
9223	MAGI1	Membrane-associated guanylate kinase, WW and PDZ domain-containing 1	hsa04015;hsa04151;hsa04530;hsa05165
9235	IL32	Interleukin 32	hsa04060
930	CD19	CD19 molecule	hsa04151;hsa04640;hsa04662;hsa05169;hsa05340
93034	NT5C1B	5'-nucleotidase, cytosolic IB	hsa00230;hsa00240;hsa00760;hsa01100
931	MS4A1	Membrane spanning 4-domains A1	hsa04640
93183	PIGM	Phosphatidylinositol glycan anchor biosynthesis class M	hsa00563;hsa01100
9322	TRIP10	Thyroid hormone receptor interactor 10	hsa04910
9365	KL	Klotho	hsa00040;hsa01100;hsa04211;hsa04928;hsa04961
9380	GRHPR	Glyoxylate and hydroxypyruvate reductase	hsa00260;hsa00620;hsa00630;hsa01100
9447	AIM2	Absent in melanoma 2	hsa04621;hsa04623
945	CD33	CD33 molecule	hsa04640
9466	IL27RA	Interleukin 27 receptor subunit α	hsa04060;hsa04630;hsa04659
955	ENTPD6	Ectonucleoside triphosphate diphosphohydrolase 6 (putative)	hsa00230;hsa00240

9586	CREB5	cAMP responsive element-binding protein 5	hsa04022;hsa04024;hsa04151;hsa04152;hsa04211;hsa04261;hsa04668;hsa04714;hsa04725;hsa04728;hsa04911;hsa04915;hsa04918;hsa04922;hsa04925;hsa04926;hsa04927;hsa04928;hsa04931;hsa04934;hsa04962;hsa05016;hsa05030;hsa05031;hsa05034;hsa05161;hsa05163;hsa05165;hsa05166;hsa05203;hsa05215
9630	GNA14	G protein subunit α 14	hsa04020;hsa05142;hsa05146
971	CD72	CD72 molecule	hsa04662
974	CD79B	CD79b molecule	hsa04662
9807	IP6K1	Inositol hexakisphosphate kinase 1	hsa04070
9862	MED24	Mediator complex subunit 24	hsa04919
9902	MRC2	Mannose receptor C type 2	hsa04145;hsa05152
9939	RBM8A	RNA-binding motif protein 8A	hsa03013;hsa03015;hsa03040

KEGG, Kyoto Encyclopedia of Genes and Genomes.

Table SIV. Correlation scores and P-values from quantitative expression trait loci analysis.

SNP	Genes	Adjusted P-value	Correlation score
rs11941492	REG3G	0.0057	0.82
rs11941492	VCX2	0.0001	0.59
rs12535394	MAP10	0.0010	0.55
rs11133360	TCF23	0.0123	-0.39
rs12535394	CEACAM8	0.0108	0.37
rs11941492	MUSK	0.0088	0.36
rs11941492	DSCAM	0.0063	0.34
rs10275489	FAM132A	0.0015	0.31
rs11133360	GK2	0.0054	0.30
rs10275489	CDH8	0.0102	0.28
rs12535394	CCDC17	0.0046	0.27
rs12535394	COL9A1	0.0094	0.27
rs10275489	NOX3	0.0023	0.24
rs11133360	PLK5	0.0116	-0.23
rs12535394	TWISTNB	0.0121	0.22
rs11941492	NOTO	0.0047	0.22
rs12535394	TMEM190	0.0105	0.21
rs12535394	EMILIN1	0.0123	-0.20
rs11133360	C14ORF80	0.0014	0.20
rs10275489	BLID	0.0085	0.19
rs11941492	CHST7	0.0104	0.19
rs11133360	CCL3L3	0.0067	-0.19
rs11941492	SSX9	0.0102	0.18
rs10275489	MCF2	0.0119	-0.18
rs12535394	LCNL1	0.0068	0.18
rs11133360	PRSS45	0.0019	-0.18
rs12535394	AACSP1	0.0103	0.17
rs11133360	SLC5A8	0.0072	0.17
rs10275489	KLK1	0.0067	-0.17
rs10275489	OR8J3	0.0021	0.17
rs11941492	LINC00924	0.0060	0.17
rs11941492	OR5V1	0.0001	0.16
rs10275489	MYO1A	0.0045	-0.16
rs12535394	C17ORF49	0.0016	0.16
rs11133360	PTMS	0.0000	0.16
rs11133360	MZT2A	0.0055	0.15
rs11941492	PM20D1	0.0002	0.15
rs10275489	DCAF12L2	0.0000	0.15
rs12535394	RLTPR	0.0005	0.15
rs11941492	RHOXF1	0.0093	0.15
rs11133360	DSC1	0.0067	-0.15
rs10275489	DACH2	0.0104	0.15
rs12535394	PRSS53	0.0008	0.15
rs10275489	MMP17	0.0036	0.15

rs12535394	PROP1	0.0035	-0.15
rs12535394	DDN	0.0013	0.15
rs12535394	PUS1	0.0006	0.15
rs11133360	LRRTM2	0.0059	-0.14
rs11941492	RGS13	0.0031	0.14
rs12535394	TMEM191A	0.0060	-0.14
rs10275489	MT4	0.0108	0.14
rs11941492	CLEC4C	0.0032	0.14
rs11133360	SPSB2	0.0012	0.14
rs11133360	PPP4R4	0.0011	-0.14
rs12535394	LY6G5B	0.0021	0.14
rs12535394	ZNF133	0.0000	0.14
rs12535394	MFSD2B	0.0018	0.13
rs12535394	ENKUR	0.0032	0.13
rs11133360	FGF20	0.0102	-0.13
rs12535394	FAM156A	0.0021	0.13
rs12535394	IL32	0.0002	0.13
rs11133360	HINT1	0.0000	0.13
rs11941492	VCX	0.0122	0.13
rs11133360	YBX2	0.0041	0.13
rs12535394	OGDHL	0.0038	0.13
rs12535394	POU5F2	0.0009	0.13
rs10275489	TMIE	0.0073	-0.13
rs10275489	ARHGEF16	0.0007	0.13
rs12535394	ITPKA	0.0078	-0.13
rs11133360	DHRS4L2	0.0060	0.13
rs12535394	METTL17	0.0000	0.13
rs12535394	PBX4	0.0004	0.13
rs11941492	STAB2	0.0006	0.13
rs11133360	PEAR1	0.0116	-0.13
rs11133360	NPHP3	0.0019	-0.12
rs11133360	SIL1	0.0083	0.12
rs12535394	MEP1A	0.0121	0.12
rs11133360	FREM1	0.0090	-0.12
rs11133360	C20ORF144	0.0027	-0.12
rs12535394	TFAP2E	0.0013	0.12
rs11941492	CETP	0.0002	0.12
rs11133360	SIVA1	0.0042	0.12
rs11941492	CCL17	0.0064	0.12
rs10275489	MST1L	0.0103	0.12
rs11133360	DCP1A	0.0001	-0.12
rs11941492	TNFRSF13C	0.0034	0.12
rs11133360	NPY5R	0.0041	-0.12
rs11941492	BLK	0.0047	0.12
rs12535394	TCF15	0.0070	0.12
rs11133360	EBLN2	0.0009	-0.12
rs12535394	SLC25A28	0.0047	0.12
rs11941492	TTC24	0.0002	0.12
rs12535394	PTGDS	0.0066	0.12

rs11133360	KIAA1683	0.0028	-0.12
rs11133360	KL	0.0082	-0.12
rs12535394	QPCTL	0.0038	0.12
rs11941492	DCBLD2	0.0011	-0.12
rs12535394	SBF2	0.0002	-0.12
rs12535394	GALNT12	0.0094	0.12
rs11941492	MMRN1	0.0002	0.12
rs12535394	LINC00461	0.0099	0.12
rs11941492	SNAI3	0.0056	0.12
rs11133360	NDUFS6	0.0062	0.12
rs11941492	GRAP	0.0029	0.12
rs11133360	INE1	0.0007	-0.12
rs11133360	DST	0.0051	-0.12
rs12535394	NDUFAF4	0.0002	0.12
rs11133360	CHRD1	0.0049	-0.12
rs11941492	FCRL1	0.0031	0.12
rs12535394	RFXANK	0.0015	0.12
rs11133360	PRADC1	0.0088	0.12
rs12535394	PIWIL4	0.0025	0.12
rs12535394	ANGPTL7	0.0112	0.11
rs12535394	CLDN17	0.0097	0.11
rs12535394	LOXL4	0.0048	0.11
rs12535394	PNMA3	0.0000	0.11
rs11133360	PCK2	0.0009	0.11
rs11941492	MDGA1	0.0053	0.11
rs10275489	ZNF90	0.0002	-0.11
rs11133360	SORD	0.0059	0.11
rs11133360	POLR2I	0.0027	0.11
rs10275489	LRRN4	0.0116	0.11
rs10275489	SLC44A5	0.0056	-0.11
rs11941492	NAALADL1	0.0064	0.11
rs12535394	TTC24	0.0058	0.11
rs11133360	DNAH1	0.0099	-0.11
rs11133360	GALNT16	0.0035	0.11
rs10275489	MT2A	0.0029	0.11
rs11941492	FCRL3	0.0098	0.11
rs12535394	ELFN1	0.0081	-0.11
rs11941492	AQP2	0.0063	0.11
rs12535394	PROCR	0.0026	-0.11
rs12535394	C9ORF129	0.0017	-0.11
rs12535394	FAM107A	0.0076	0.11
rs12535394	CCDC28B	0.0011	0.11
rs10275489	EEF1DP3	0.0090	0.11
rs11133360	CAV1	0.0072	-0.11
rs11133360	NISCH	0.0072	-0.11
rs12535394	MORN1	0.0113	-0.11
rs11133360	CUEDC2	0.0083	0.11
rs12535394	CHST15	0.0002	-0.11
rs11941492	ARMC5	0.0008	0.11

rs11133360	MYOZ3	0.0065	0.11
rs11941492	FCRL2	0.0056	0.11
rs11941492	TNN	0.0103	0.11
rs11941492	IL17D	0.0053	0.11
rs11133360	OSBPL11	0.0005	-0.11
rs11133360	LMAN2	0.0059	0.11
rs12535394	CHSY3	0.0032	-0.11
rs11941492	HMHA1	0.0075	0.11
rs12535394	NID1	0.0106	-0.11
rs11133360	IDH3G	0.0026	0.11
rs12535394	C19ORF48	0.0005	0.11
rs10275489	DDO	0.0004	0.11
rs12535394	FAM114A1	0.0025	-0.11
rs11941492	SCP2D1	0.0065	0.11
rs12535394	PER2	0.0049	-0.11
rs11133360	MAPKBP1	0.0036	-0.11
rs11941492	ADCYAP1R 1	0.0017	0.11
rs11133360	ANK2	0.0028	-0.11
rs12535394	FAM63B	0.0035	-0.11
rs10275489	TAS2R9	0.0004	-0.11
rs12535394	SMIM14	0.0010	-0.10
rs11133360	NLRP3	0.0125	-0.10
rs12535394	KANK2	0.0038	-0.10
rs12535394	WRAP53	0.0119	0.10
rs11133360	COG6	0.0022	-0.10
rs10275489	14-Sep	0.0108	0.10
rs12535394	TUBB4A	0.0047	0.10
rs12535394	GTF2A1	0.0073	-0.10
rs11133360	ABCA11P	0.0008	-0.10
rs11133360	DENND5A	0.0020	-0.10
rs11941492	SNAP25	0.0066	0.10
rs11133360	AMOTL2	0.0037	-0.10
rs10275489	UGT3A1	0.0001	0.10
rs12535394	GLIS3	0.0032	-0.10
rs11941492	P2RX5	0.0079	0.10
rs11133360	CD33	0.0069	-0.10
rs11133360	DDX3X	0.0061	-0.10
rs12535394	HMGN3	0.0005	0.10
rs12535394	CTSC	0.0090	0.10
rs12535394	SNHG15	0.0044	0.10
rs12535394	C10ORF90	0.0046	0.10
rs10275489	IMPG1	0.0023	0.10
rs11133360	FAM217A	0.0060	0.10
rs11941492	PPAPDC3	0.0045	0.10
rs12535394	CCDC170	0.0059	-0.10
rs11941492	CNR2	0.0021	0.10
rs11941492	MYOZ3	0.0015	0.10
rs11941492	LINC00926	0.0022	0.10
rs11941492	SIPA1	0.0062	0.10

rs12535394	HAUS7	0.0033	0.10
rs11941492	LILRA4	0.0023	0.10
rs11133360	ZC3H6	0.0024	-0.10
rs12535394	TSPAN33	0.0001	0.10
rs12535394	ADAMDEC 1	0.0074	0.10
rs11133360	EMD	0.0032	0.10
rs12535394	SSTR3	0.0047	0.10
rs10275489	RAP1GAP	0.0008	0.10
rs11133360	TMF1	0.0051	-0.10
rs11941492	USP20	0.0036	0.10
rs11941492	GRID1	0.0099	0.10
rs11133360	SNRK	0.0070	-0.10
rs11941492	DTHD1	0.0086	0.10
rs11941492	LY9	0.0096	0.10
rs12535394	TMEM161A	0.0034	0.10
rs12535394	POSTN	0.0044	-0.10
rs11133360	PAFAH1B3	0.0073	0.10
rs11133360	XRCC3	0.0043	0.10
rs12535394	CPA5	0.0099	0.10
rs11941492	AIRE	0.0103	0.10
rs11133360	SACMIL	0.0022	-0.10
rs12535394	SENP3	0.0018	0.10
rs12535394	N4BP2	0.0081	-0.10
rs12535394	HNRNPC	0.0006	0.10
rs11941492	LCN10	0.0085	0.10
rs12535394	AIM2	0.0042	0.10
rs12535394	LTB	0.0088	0.10
rs11133360	PSMD9	0.0115	0.10
rs11133360	NELFE	0.0066	0.10
rs10275489	INTU	0.0016	0.10
rs11133360	LRRC16B	0.0053	0.10
rs12535394	TAS1R3	0.0037	-0.10
rs11133360	PBRM1	0.0048	-0.10
rs12535394	FAM58A	0.0030	0.10
rs11133360	TAS2R13	0.0005	-0.10
rs10275489	EDA2R	0.0081	0.10
rs10275489	MORN1	0.0089	0.10
rs11941492	MEOX1	0.0097	0.10
rs12535394	TRIM31	0.0082	0.10
rs11941492	CLNK	0.0093	0.10
rs12535394	C9ORF64	0.0050	-0.10
rs12535394	FUS	0.0061	0.10
rs11133360	SLC44A4	0.0010	0.10
rs12535394	TCF12	0.0100	-0.10
rs11133360	RHOC	0.0116	0.10
rs11941492	CMA1	0.0031	0.10
rs12535394	WWC2	0.0016	-0.10
rs11133360	NKTR	0.0090	-0.10
rs11133360	BAG3	0.0076	0.10

rs12535394	ZNF22	0.0003	0.09
rs11133360	EXOSC1	0.0037	0.09
rs12535394	PABPN1	0.0007	0.09
rs12535394	JRKL	0.0016	0.09
rs12535394	GLT8D2	0.0094	-0.09
rs12535394	PYY	0.0110	-0.09
rs11941492	CCL14	0.0113	0.09
rs11941492	ZAP70	0.0046	0.09
rs12535394	ST5	0.0088	-0.09
rs12535394	CUX2	0.0025	0.09
rs12535394	ACTRT3	0.0053	0.09
rs12535394	TNF	0.0011	0.09
rs11941492	RASGRP2	0.0052	0.09
rs11133360	SETD2	0.0044	-0.09
rs12535394	SS18L2	0.0047	0.09
rs12535394	SNED1	0.0113	-0.09
rs12535394	TRIP10	0.0079	0.09
rs12535394	MRC2	0.0100	-0.09
rs12535394	MSL3	0.0010	0.09
rs11133360	RGS3	0.0054	0.09
rs12535394	TMPRSS13	0.0028	0.09
rs12535394	FGF11	0.0065	0.09
rs11133360	C6ORF47	0.0010	0.09
rs12535394	SH3D19	0.0124	-0.09
rs11133360	BIK	0.0080	0.09
rs11133360	RNASEH2A	0.0035	0.09
rs12535394	EIF5A	0.0041	0.09
rs12535394	ZNF789	0.0027	0.09
rs11941492	CCL21	0.0022	0.09
rs11941492	BMX	0.0095	0.09
rs12535394	FAM71F1	0.0068	0.09
rs12535394	COLEC12	0.0082	-0.09
rs11941492	CD19	0.0118	0.09
rs12535394	ARMC6	0.0009	0.09
rs10275489	HABP2	0.0009	0.09
rs11133360	SFXN4	0.0005	0.09
rs12535394	FKBPL	0.0042	0.09
rs12535394	ENTPD6	0.0028	0.09
rs11941492	ICAM3	0.0119	0.09
rs12535394	MAPKBP1	0.0102	-0.09
rs11133360	DCAF12L1	0.0105	0.09
rs12535394	UGT2A3	0.0079	-0.09
rs11133360	ZNF197	0.0024	-0.09
rs11133360	XIST	0.0082	-0.09
rs11133360	CREB5	0.0011	-0.09
rs12535394	OSGEP	0.0001	0.09
rs11133360	ACTR8	0.0011	-0.09
rs11133360	ZNF445	0.0028	-0.09
rs11133360	EMILIN2	0.0096	-0.09

rs11133360	SRD5A3	0.0029	0.09
rs11133360	FRMD4B	0.0110	-0.09
rs11133360	NPY1R	0.0051	-0.09
rs11133360	NABP2	0.0022	0.09
rs12535394	ADORA3	0.0092	-0.09
rs12535394	SLC35D1	0.0027	-0.09
rs11941492	PARVG	0.0056	0.09
rs12535394	FUT4	0.0031	0.09
rs12535394	FAM73A	0.0102	-0.09
rs11941492	HMGCR	0.0009	0.09
rs12535394	SRSF8	0.0006	0.09
rs11941492	PAX5	0.0072	0.09
rs12535394	TMLHE	0.0031	0.09
rs11133360	MAGI1	0.0017	-0.09
rs11133360	DNPEP	0.0092	0.09
rs11941492	CLEC17A	0.0036	0.09
rs12535394	TMIGD2	0.0114	0.09
rs12535394	SPOCK2	0.0114	0.09
rs11133360	CFB	0.0076	0.09
rs11133360	LRCH1	0.0086	-0.09
rs12535394	SAXO1	0.0066	-0.09
rs12535394	DXO	0.0103	0.09
rs11941492	PLA2G6	0.0125	0.09
rs12535394	CASC4	0.0072	-0.09
rs11133360	LSM4	0.0060	0.09
rs10275489	CARF	0.0039	0.09
rs11941492	PSG4	0.0118	0.09
rs12535394	PRIMPOL	0.0029	-0.09
rs11133360	PRDM10	0.0111	-0.09
rs11941492	MAGEA1	0.0004	0.09
rs11133360	SPATA13	0.0026	-0.09
rs10275489	SLC25A39	0.0004	-0.09
rs12535394	NR2C2AP	0.0017	0.09
rs10275489	DUSP15	0.0055	-0.09
rs12535394	AFF3	0.0082	-0.09
rs11133360	FKBPL	0.0063	0.09
rs12535394	CMC2	0.0046	0.09
rs10275489	JAK1	0.0023	0.09
rs12535394	TIFAB	0.0059	0.09
rs12535394	RNF103	0.0048	-0.09
rs12535394	HPRT1	0.0013	0.09
rs11133360	FAM208A	0.0052	-0.09
rs12535394	ZNF93	0.0003	0.09
rs12535394	CD320	0.0124	0.09
rs11133360	VPRBP	0.0028	-0.09
rs12535394	CPSF4	0.0024	0.09
rs12535394	MSL3P1	0.0046	0.09
rs11133360	SNX4	0.0036	-0.09
rs12535394	FYCO1	0.0041	-0.09

rs12535394	DCANP1	0.0084	0.09
rs12535394	CTDNBP1	0.0119	0.09
rs11941492	TRAT1	0.0104	0.09
rs12535394	SRSF3	0.0016	0.09
rs11941492	NCF1B	0.0073	0.09
rs11941492	EIF4G3	0.0004	0.09
rs12535394	RPSAP58	0.0106	0.09
rs11133360	RPLP0	0.0075	0.09
rs12535394	OSBPL6	0.0029	-0.09
rs12535394	EIF4G3	0.0045	-0.09
rs10275489	GUCA2B	0.0025	0.09
rs12535394	THUMPD2	0.0105	0.09
rs12535394	PRICKLE2	0.0076	-0.09
rs11941492	CCDC105	0.0055	0.09
rs12535394	PLA1A	0.0037	0.09
rs11941492	FOXI2	0.0073	0.09
rs11941492	P2RX1	0.0036	0.09
rs11133360	GPR142	0.0072	-0.09
rs10275489	PTPN13	0.0024	0.09
rs11133360	BSPRY	0.0074	0.09
rs11941492	BANK1	0.0060	0.09
rs12535394	GSTM3	0.0090	-0.09
rs12535394	TIMM9	0.0012	0.09
rs12535394	CLEC2D	0.0090	0.09
rs12535394	SNHG3	0.0085	0.09
rs12535394	SEMA4D	0.0079	0.09
rs10275489	CD320	0.0042	-0.09
rs12535394	ANAPC5	0.0010	0.09
rs12535394	FKBP8	0.0118	0.09
rs11133360	SLC2A1	0.0094	-0.09
rs12535394	ZNF518B	0.0115	0.09
rs11941492	ADA	0.0027	0.09
rs11941492	TLR10	0.0049	0.09
rs11133360	OR4B1	0.0094	0.09
rs10275489	ST6GALNA C5	0.0042	-0.09
rs11133360	EPS15	0.0079	-0.09
rs11133360	GPALPP1	0.0029	-0.09
rs11133360	RPL32P3	0.0087	-0.09
rs11133360	CENPU	0.0028	0.09
rs12535394	SH2D2A	0.0058	0.09
rs10275489	AHDC1	0.0075	0.09
rs11133360	MYO5A	0.0102	-0.09
rs12535394	ADAMTS2	0.0078	-0.09
rs11941492	FAM151A	0.0002	0.09
rs11941492	C11ORF21	0.0110	0.09
rs12535394	OTUD5	0.0125	0.09
rs11133360	ASB1	0.0109	-0.09
rs11133360	C2ORF54	0.0041	0.09
rs11133360	KCNJ11	0.0070	0.09

rs12535394	HGF	0.0082	-0.09
rs10275489	EIF4G3	0.0013	0.09
rs11133360	ALOX5	0.0102	-0.09
rs10275489	FGG	0.0029	0.08
rs11133360	1-Mar	0.0108	-0.08
rs12535394	DHX15	0.0039	-0.08
rs11133360	C10ORF95	0.0021	0.08
rs12535394	RAB27B	0.0080	-0.08
rs12535394	KLHL31	0.0086	0.08
rs10275489	PCDHGA6	0.0013	0.08
rs12535394	SIRT4	0.0100	0.08
rs11941492	IL16	0.0033	0.08
rs12535394	GHRLOS	0.0015	0.08
rs11941492	FAM129C	0.0077	0.08
rs10275489	SULT1A1	0.0054	0.08
rs10275489	PPAN	0.0118	-0.08
rs12535394	TMEM123	0.0011	0.08
rs12535394	TDP1	0.0006	0.08
rs12535394	GSPT2	0.0048	0.08
rs11941492	CD209	0.0090	0.08
rs12535394	AKIP1	0.0067	-0.08
rs12535394	MYOF	0.0113	-0.08
rs10275489	CRYAB	0.0048	-0.08
rs11133360	TBCB	0.0065	0.08
rs12535394	CCDC71L	0.0014	0.08
rs11133360	FGF13	0.0045	0.08
rs12535394	RBM47	0.0048	-0.08
rs10275489	SBF2	0.0025	0.08
rs11941492	DNPEP	0.0025	0.08
rs11133360	TMEM177	0.0076	0.08
rs11133360	SRP19	0.0052	0.08
rs12535394	TMEM87A	0.0072	-0.08
rs12535394	NEDD8	0.0034	0.08
rs10275489	WWC2	0.0013	0.08
rs11941492	PEX10	0.0014	0.08
rs12535394	GABRA3	0.0014	0.08
rs12535394	TRIAP1	0.0043	0.08
rs11941492	TREML2	0.0028	0.08
rs11133360	STON2	0.0041	0.08
rs10275489	FGB	0.0027	0.08
rs12535394	SLC25A39	0.0054	0.08
rs11133360	CATSPER3	0.0119	0.08
rs10275489	MYRF	0.0067	-0.08
rs11133360	BTBD6	0.0050	0.08
rs11133360	SAR1B	0.0057	0.08
rs11941492	MRGPRX2	0.0022	0.08
rs12535394	RTKN2	0.0002	0.08
rs12535394	NANP	0.0003	0.08
rs12535394	HMSD	0.0067	0.08

rs12535394	WDR19	0.0071	-0.08
rs11941492	WBP11	0.0055	0.08
rs11941492	LINC00592	0.0057	0.08
rs12535394	TAS2R46	0.0088	-0.08
rs12535394	NINL	0.0040	0.08
rs12535394	GPD1L	0.0060	-0.08
rs11941492	CD79B	0.0097	0.08
rs11133360	AKAP5	0.0085	0.08
rs10275489	LECT2	0.0113	0.08
rs11941492	PIK3IP1	0.0102	0.08
rs12535394	TRAPPC11	0.0035	-0.08
rs11133360	GTF2IRD2B	0.0055	-0.08
rs11133360	PDZD11	0.0031	0.08
rs11941492	CFP	0.0113	0.08
rs12535394	RANBP17	0.0068	0.08
rs11941492	PRKCB	0.0100	0.08
rs12535394	CALR	0.0071	0.08
rs12535394	TIGD1	0.0052	0.08
rs10275489	DZIP1L	0.0069	-0.08
rs12535394	ACVR1	0.0105	-0.08
rs12535394	DDX26B	0.0066	0.08
rs10275489	DNAH7	0.0069	0.08
rs12535394	RAN	0.0029	0.08
rs11941492	QPRT	0.0116	0.08
rs11133360	NRM	0.0020	0.08
rs10275489	OSBPL5	0.0122	0.08
rs11941492	DPP6	0.0089	0.08
rs11133360	IP6K1	0.0033	-0.08
rs12535394	RPS10	0.0099	0.08
rs11941492	SLC30A3	0.0108	0.08
rs12535394	IL21	0.0111	0.08
rs11941492	RYBP	0.0011	-0.08
rs10275489	GADD45A	0.0053	0.08
rs11133360	IFNAR2	0.0035	-0.08
rs12535394	ADAT2	0.0025	0.08
rs11941492	PARP15	0.0053	0.08
rs12535394	TPTEP1	0.0106	0.08
rs10275489	SERINC1	0.0018	0.08
rs10275489	CLHC1	0.0098	0.08
rs11941492	MAS1L	0.0099	0.08
rs11133360	MORC3	0.0123	-0.08
rs12535394	MTMR2	0.0023	0.08
rs12535394	GATAD2A	0.0003	0.08
rs12535394	DTD1	0.0010	0.08
rs12535394	AUNIP	0.0108	0.08
rs11941492	GPR18	0.0107	0.08
rs12535394	TBRG4	0.0061	0.08
rs12535394	IL3	0.0046	0.08
rs11941492	GPR183	0.0054	0.08

rs10275489	ENTPD6	0.0024	-0.08
rs12535394	PCDHGA6	0.0100	-0.08
rs12535394	HNRNPL	0.0070	0.08
rs10275489	DCAF4	0.0021	-0.08
rs10275489	ECE1	0.0099	0.08
rs11941492	MAEL	0.0019	0.08
rs12535394	SLC35B4	0.0075	0.08
rs10275489	DAO	0.0045	0.08
rs12535394	TMEM184A	0.0100	-0.08
rs11941492	PPFIA4	0.0036	-0.08
rs11133360	ZNF589	0.0056	-0.08
rs12535394	PLEKHB2	0.0112	-0.08
rs12535394	MCOLN2	0.0123	0.08
rs12535394	FAM209A	0.0118	0.08
rs12535394	ZNF32	0.0078	0.08
rs12535394	EXOSC5	0.0107	0.08
rs11941492	FOXF2	0.0074	0.08
rs11941492	GVINP1	0.0064	0.08
rs11941492	METTL24	0.0034	0.08
rs11133360	PPA2	0.0117	0.08
rs12535394	CDK2AP1	0.0032	0.08
rs11941492	CNNM1	0.0012	0.08
rs12535394	SH2B2	0.0034	0.08
rs10275489	MGST1	0.0070	0.08
rs11133360	DIS3	0.0032	-0.08
rs12535394	MED26	0.0013	0.08
rs11941492	FCER2	0.0079	0.08
rs12535394	MOGS	0.0083	0.08
rs11941492	SSTR3	0.0056	0.08
rs11133360	C2CD2	0.0104	-0.08
rs12535394	CD160	0.0080	0.08
rs10275489	ZNF578	0.0016	-0.08
rs12535394	ADCK1	0.0083	0.08
rs11941492	TRABD2A	0.0068	0.08
rs12535394	PITHD1	0.0073	0.08
rs12535394	CCDC14	0.0098	0.08
rs10275489	OR2A2	0.0029	0.08
rs11133360	GRHPR	0.0105	0.08
rs12535394	FAM218A	0.0087	0.08
rs12535394	DIAPH2	0.0054	0.08
rs11133360	RYBP	0.0120	-0.08
rs11941492	PDE6G	0.0064	0.08
rs10275489	FRY	0.0107	0.08
rs11941492	CLPS	0.0100	0.08
rs11133360	POLR2H	0.0040	0.08
rs12535394	ANKRD49	0.0012	0.08
rs12535394	BID	0.0081	0.08
rs10275489	HIST2H3D	0.0102	0.08
rs11941492	MYO1G	0.0121	0.08

rs11941492	CTSG	0.0088	0.08
rs11133360	ASF1B	0.0078	0.08
rs11133360	GTF2IRD2	0.0097	-0.08
rs12535394	PNMA6A	0.0012	0.08
rs11941492	INADL	0.0073	-0.08
rs11941492	DPPA4	0.0065	0.08
rs11941492	LCN8	0.0028	0.08
rs11133360	GLRX5	0.0098	0.08
rs11133360	RBM26	0.0101	-0.08
rs11133360	USP16	0.0031	-0.08
rs12535394	EFNB2	0.0066	-0.08
rs12535394	PDE9A	0.0018	0.08
rs10275489	SENP3	0.0042	-0.08
rs10275489	RASL11A	0.0059	0.08
rs10275489	GNA14	0.0039	0.08
rs12535394	ANKS6	0.0088	0.08
rs12535394	CCDC58	0.0030	0.08
rs11941492	ST6GALNA C6	0.0069	0.08
rs12535394	CDCA7	0.0119	0.08
rs12535394	SERINC1	0.0108	-0.08
rs12535394	FOXRED1	0.0074	0.08
rs11133360	SFR1	0.0094	0.08
rs10275489	GRAMD1C	0.0079	0.08
rs12535394	TTK	0.0054	0.08
rs11941492	GRXCR1	0.0030	0.08
rs11941492	XCR1	0.0019	0.08
rs12535394	CCNB1IP1	0.0009	0.08
rs10275489	MAP3K12	0.0103	0.08
rs11133360	VPS36	0.0104	-0.08
rs10275489	GUCY2C	0.0035	-0.08
rs12535394	PSMB5	0.0011	0.08
rs11941492	LHX6	0.0011	0.08
rs11133360	SLMAP	0.0123	-0.08
rs11941492	LDHAL6A	0.0039	0.08
rs12535394	PUS3	0.0040	0.08
rs11133360	TSC1	0.0119	-0.08
rs12535394	ZNF394	0.0035	0.08
rs11941492	C9ORF57	0.0013	0.08
rs12535394	IL18BP	0.0086	0.08
rs10275489	KCNK15	0.0126	0.08
rs10275489	MRPL4	0.0104	-0.08
rs12535394	PITPNM2	0.0082	0.08
rs12535394	HMGA1	0.0054	0.08
rs12535394	ALG6	0.0028	0.08
rs12535394	ITGB1BP1	0.0045	0.08
rs12535394	BMP4	0.0063	-0.08
rs12535394	RELB	0.0115	0.08
rs11133360	CACNB3	0.0093	0.08
rs10275489	ORAI1	0.0107	-0.08

rs11941492	SEC1P	0.0018	0.08
rs12535394	KCNJ14	0.0015	0.08
rs12535394	UBA52	0.0035	0.08
rs12535394	IL2RG	0.0100	0.08
rs12535394	STEAP1B	0.0087	0.08
rs11941492	GRK6	0.0041	0.08
rs10275489	GLIS3	0.0112	0.08
rs10275489	C2ORF54	0.0025	0.08
rs12535394	KRI1	0.0055	0.08
rs12535394	ZNF35	0.0087	0.08
rs12535394	ZNF140	0.0100	0.08
rs12535394	DCUN1D5	0.0021	0.08
rs10275489	CHST15	0.0022	0.08
rs12535394	ZNF253	0.0102	0.08
rs12535394	ZNF609	0.0020	-0.08
rs11941492	SP110	0.0025	0.08
rs11941492	PTCRA	0.0064	0.08
rs11133360	EIF3K	0.0120	0.08
rs12535394	NGDN	0.0001	0.08
rs11941492	ALOX12P2	0.0103	-0.08
rs11133360	SLC6A5	0.0122	0.08
rs11941492	CCDC69	0.0106	0.08
rs10275489	ARHGEF10	0.0082	0.08
	L		
rs11941492	ZNF876P	0.0063	-0.08
rs12535394	SLC24A1	0.0023	-0.08
rs12535394	RASSF4	0.0037	0.08
rs11133360	RNF123	0.0068	-0.08
rs12535394	EFS	0.0051	0.07
rs11941492	MUSTN1	0.0116	0.07
rs11133360	FNBP1	0.0122	-0.07
rs12535394	SMPDL3B	0.0122	0.07
rs10275489	ARHGAP18	0.0082	0.07
rs10275489	ZNF133	0.0030	-0.07
rs10275489	PRIMPOL	0.0039	0.07
rs11941492	CD72	0.0083	0.07
rs10275489	GNRHR	0.0089	0.07
rs12535394	POLD2	0.0126	0.07
rs12535394	APH1B	0.0106	-0.07
rs12535394	ACIN1	0.0113	0.07
rs10275489	NFE2L2	0.0084	0.07
rs11941492	TMEM14E	0.0036	0.07
rs12535394	S1PR3	0.0122	-0.07
rs12535394	KDM2B	0.0037	0.07
rs11133360	ERH	0.0060	0.07
rs11941492	HSPA1B	0.0094	-0.07
rs10275489	IQCH	0.0073	0.07
rs11941492	RALGDS	0.0035	0.07
rs11941492	PTF1A	0.0017	0.07
rs11133360	UROS	0.0019	0.07

rs11133360	COPS6	0.0070	0.07
rs12535394	NKRF	0.0032	0.07
rs11941492	DOCK10	0.0043	0.07
rs10275489	EIF4G2	0.0017	0.07
rs11133360	LPAR2	0.0026	0.07
rs12535394	LIAS	0.0123	-0.07
rs11941492	KIF17	0.0099	0.07
rs11941492	PLEKHM2	0.0084	0.07
rs10275489	ERBB4	0.0095	0.07
rs12535394	GABRP	0.0030	0.07
rs11941492	TCL1A	0.0070	0.07
rs12535394	SMIM10L2	0.0063	0.07
	B		
rs11133360	TMCC1	0.0032	-0.07
rs11133360	LDOC1	0.0020	0.07
rs11941492	FAM213B	0.0038	0.07
rs12535394	FDX1	0.0102	0.07
rs11941492	ABCA7	0.0108	0.07
rs10275489	TBC1D19	0.0071	0.07
rs10275489	NPSR1	0.0007	0.07
rs12535394	SMIM5	0.0099	0.07
rs12535394	GLIPR2	0.0066	0.07
rs10275489	GCNT1	0.0079	0.07
rs11133360	KDM5C	0.0092	-0.07
rs12535394	KRT222	0.0095	-0.07
rs12535394	DNAJC2	0.0033	0.07
rs10275489	PCBP4	0.0074	-0.07
rs12535394	LINC00493	0.0075	0.07
rs12535394	METTL20	0.0069	-0.07
rs10275489	ATP10D	0.0086	0.07
rs12535394	ZNF738	0.0079	0.07
rs11941492	YWHAE	0.0011	-0.07
rs11941492	UBAC1	0.0112	0.07
rs12535394	MAGED4	0.0006	0.07
rs11133360	UBA3	0.0097	-0.07
rs11133360	TANK	0.0121	-0.07
rs10275489	PGP	0.0090	-0.07
rs12535394	ANAPC7	0.0045	0.07
rs11941492	P2RY10	0.0028	0.07
rs11941492	ISL2	0.0046	0.07
rs12535394	COQ10B	0.0070	-0.07
rs12535394	ZNF485	0.0110	0.07
rs12535394	SOGA1	0.0005	-0.07
rs11133360	EZH1	0.0121	-0.07
rs12535394	SEPSECS	0.0098	-0.07
rs10275489	GANC	0.0030	0.07
rs11941492	RBM18	0.0041	0.07
rs11133360	ZNF727	0.0091	-0.07
rs12535394	SIM2	0.0077	0.07
rs11133360	HCN1	0.0038	-0.07

rs12535394	CTNND1	0.0045	-0.07
rs11133360	PSME2	0.0045	0.07
rs12535394	ZNF682	0.0068	0.07
rs11133360	H2AFZ	0.0084	0.07
rs11941492	MS4A1	0.0074	0.07
rs12535394	OMP	0.0063	0.07
rs10275489	C17ORF53	0.0021	-0.07
rs10275489	ZNF398	0.0008	-0.07
rs11941492	FAM65B	0.0106	0.07
rs12535394	TRIM38	0.0065	0.07
rs11941492	RERE	0.0041	0.07
rs10275489	C2ORF78	0.0123	0.07
rs11941492	TMEM131	0.0073	0.07
rs11133360	PSMA5	0.0095	0.07
rs11941492	KCNA3	0.0118	0.07
rs12535394	ZNRD1	0.0120	0.07
rs11133360	ORMDL2	0.0100	0.07
rs12535394	LINC00852	0.0113	0.07
rs10275489	TPTEP1	0.0085	-0.07
rs10275489	KIAA1211	0.0080	0.07
rs10275489	COQ10B	0.0019	0.07
rs11133360	MRPS18A	0.0091	0.07
rs10275489	CASP3	0.0089	0.07
rs12535394	WISP3	0.0062	0.07
rs11133360	HIATL1	0.0092	0.07
rs10275489	5-Sep	0.0117	-0.07
rs12535394	BBS4	0.0109	-0.07
rs10275489	ANKRD53	0.0097	-0.07
rs12535394	THNSL1	0.0033	0.07
rs11941492	ZNF445	0.0042	-0.07
rs12535394	ARL9	0.0054	0.07
rs11941492	PIP4K2A	0.0041	0.07
rs11133360	TMEM185B	0.0105	0.07
rs11133360	MTRF1	0.0124	-0.07
rs12535394	STMN1	0.0107	0.07
rs12535394	OXA1L	0.0003	0.07
rs12535394	ZNF398	0.0052	0.07
rs12535394	MARCKSL1	0.0094	0.07
rs10275489	IMPA2	0.0107	-0.07
rs12535394	C11ORF73	0.0099	0.07
rs11133360	DNAJC22	0.0125	0.07
rs12535394	ARF5	0.0102	0.07
rs11941492	TCAIM	0.0027	-0.07
rs10275489	GTF3C3	0.0044	0.07
rs11941492	GZMK	0.0099	0.07
rs11133360	NAA10	0.0059	0.07
rs10275489	CPN2	0.0122	0.07
rs12535394	TMEM39B	0.0048	0.07
rs10275489	C8B	0.0111	0.07

rs11941492	PANK4	0.0080	0.07
rs12535394	LPAR2	0.0043	0.07
rs10275489	SLC35A5	0.0018	0.07
rs11941492	PRSS58	0.0075	0.07
rs11941492	DOCK11	0.0120	0.07
rs11941492	PRKAR2B	0.0084	0.07
rs11941492	SOX15	0.0047	0.07
rs10275489	SLC35D1	0.0082	0.07
rs12535394	RPS7	0.0048	0.07
rs12535394	ADD1	0.0042	-0.07
rs11133360	PRSS30P	0.0108	0.07
rs11941492	SHQ1	0.0013	-0.07
rs12535394	LRRC34	0.0070	0.07
rs12535394	SSBP1	0.0019	0.07
rs12535394	RRAS2	0.0116	0.07
rs11133360	RAC3	0.0061	0.07
rs10275489	TRAPPC11	0.0043	0.07
rs10275489	TYW5	0.0126	0.07
rs11133360	ZXDC	0.0107	-0.07
rs10275489	ANKLE1	0.0053	-0.07
rs12535394	IDI2	0.0013	0.07
rs11941492	LOXHD1	0.0062	0.07
rs10275489	TDP1	0.0011	-0.07
rs11941492	SLC12A8	0.0031	-0.07
rs12535394	LSM2	0.0100	0.07
rs11941492	CYP26C1	0.0085	0.07
rs11941492	MAST3	0.0066	0.07
rs12535394	FAM120A S	0.0106	-0.07
rs12535394	ZNF286A	0.0046	0.07
rs12535394	PNN	0.0069	0.07
rs12535394	STX19	0.0107	0.07
rs12535394	WDR37	0.0085	0.07
rs10275489	ADGRV1	0.0052	0.07
rs11941492	RER1	0.0050	0.07
rs11133360	ZBTB9	0.0124	0.07
rs10275489	NMNAT1	0.0047	0.07
rs10275489	NANP	0.0006	-0.07
rs11133360	PARP4	0.0112	-0.07
rs11941492	AMIGO2	0.0122	0.07
rs12535394	ELAVL1	0.0056	0.07
rs12535394	C7ORF73	0.0015	0.07
rs12535394	IRAK1BP1	0.0037	0.07
rs12535394	ZNF85	0.0085	0.07
rs10275489	CFAP44	0.0110	0.07
rs10275489	RWDD4	0.0033	0.07
rs11133360	POP7	0.0109	0.07
rs12535394	XPR1	0.0066	-0.07
rs12535394	DDX10	0.0090	0.07
rs11941492	GPR142	0.0100	0.07

rs10275489	SEMA4G	0.0109	-0.07
rs12535394	CWC15	0.0039	0.07
rs12535394	EXT2	0.0120	0.07
rs11941492	CDCP1	0.0091	-0.07
rs12535394	DZIP1	0.0013	0.07
rs10275489	SKA3	0.0088	-0.07
rs12535394	EPS8	0.0101	-0.07
rs12535394	IL27RA	0.0061	0.07
rs10275489	ATP6V0E2	0.0080	-0.07
rs10275489	SPIN2A	0.0095	-0.07
rs12535394	CHEK2	0.0088	0.07
rs12535394	COMMD9	0.0049	0.07
rs11133360	SLC45A3	0.0037	-0.07
rs12535394	ZCCHC17	0.0073	0.07
rs12535394	PSMB2	0.0121	0.07
rs10275489	IL13RA1	0.0025	0.07
rs10275489	ZNF280A	0.0124	-0.07
rs12535394	IRGQ	0.0079	0.07
rs12535394	SLC35A5	0.0113	-0.07
rs11941492	IRX2	0.0071	-0.07
rs11941492	KIAA1143	0.0051	-0.07
rs11133360	C19ORF47	0.0016	0.07
rs12535394	DUSP9	0.0018	0.07
rs12535394	PUS7	0.0048	0.07
rs10275489	EFNB2	0.0068	0.07
rs12535394	SRSF12	0.0114	0.07
rs11941492	PDIA3	0.0081	-0.07
rs12535394	BRIX1	0.0034	0.07
rs12535394	CDC7	0.0097	0.07
rs12535394	LINC00839	0.0053	0.07
rs11133360	FANCC	0.0081	0.07
rs11133360	MSI2	0.0057	0.07
rs10275489	SLC35B4	0.0102	-0.07
rs12535394	ESYT1	0.0095	-0.07
rs12535394	ZCCHC4	0.0102	-0.07
rs12535394	PARP2	0.0007	0.07
rs10275489	FGA	0.0115	0.07
rs11133360	STARD7	0.0126	0.06
rs11941492	GPR61	0.0076	0.06
rs11133360	XKR3	0.0056	0.06
rs12535394	CTR9	0.0054	-0.06
rs10275489	CAP1	0.0076	0.06
rs11133360	MEA1	0.0069	0.06
rs12535394	RYK	0.0067	0.06
rs12535394	HMGN4	0.0033	0.06
rs10275489	SPRED2	0.0113	0.06
rs12535394	EEF1E1	0.0102	0.06
rs11133360	FEN1	0.0087	0.06
rs10275489	MAPK1IP1	0.0059	-0.06
	L		

rs11941492	GRTP1	0.0079	-0.06
rs12535394	CEP57	0.0082	0.06
rs11133360	ZC3H13	0.0065	-0.06
rs12535394	PDSS1	0.0012	0.06
rs11941492	ASAP3	0.0111	0.06
rs12535394	ASB12	0.0046	0.06
rs12535394	IPO4	0.0060	0.06
rs10275489	SF3B1	0.0043	0.06
rs11941492	GHRL	0.0068	0.06
rs11133360	AKAP10	0.0119	-0.06
rs12535394	CASP2	0.0047	0.06
rs10275489	TIMM9	0.0058	-0.06
rs12535394	TRIT1	0.0015	0.06
rs11133360	UCP2	0.0060	0.06
rs12535394	MRAS	0.0022	0.06
rs11133360	TRIM26	0.0084	0.06
rs11133360	MRPL2	0.0063	0.06
rs12535394	MPV17L2	0.0093	0.06
rs11941492	GPR15	0.0051	0.06
rs11133360	AHCY	0.0042	0.06
rs12535394	FAM19A3	0.0073	0.06
rs12535394	CYB5R1	0.0077	-0.06
rs11133360	ELN	0.0093	0.06
rs10275489	SERPIND1	0.0123	0.06
rs12535394	C10ORF111	0.0099	0.06
rs12535394	MRPL42	0.0089	0.06
rs12535394	AK2	0.0080	0.06
rs10275489	H3F3C	0.0102	0.06
rs12535394	COA6	0.0043	0.06
rs12535394	NHLRC1	0.0094	0.06
rs12535394	GLRX3	0.0117	0.06
rs10275489	CLCN5	0.0089	-0.06
rs11133360	OCLM	0.0095	-0.06
rs11133360	PARL	0.0023	0.06
rs10275489	RNF146	0.0051	0.06
rs11133360	RYK	0.0106	-0.06
rs10275489	POLE2	0.0020	-0.06
rs11941492	DCUN1D4	0.0089	-0.06
rs11941492	MLNR	0.0020	0.06
rs12535394	PLEKHA6	0.0042	-0.06
rs10275489	ARL14	0.0003	0.06
rs10275489	IGFBP1	0.0122	0.06
rs12535394	RPN1	0.0058	0.06
rs11941492	SIM2	0.0045	-0.06
rs11133360	ZSCAN29	0.0127	-0.06
rs11941492	KRTCAP3	0.0097	-0.06
rs11133360	SLC35A4	0.0037	0.06
rs12535394	SLC25A53	0.0051	0.06
rs12535394	ZNF362	0.0068	0.06

rs11941492	GNB1	0.0037	0.06
rs12535394	MRPL3	0.0047	0.06
rs12535394	GPR22	0.0125	0.06
rs11133360	PAN3	0.0114	-0.06
rs10275489	LRRC34	0.0052	-0.06
rs12535394	LRRC8B	0.0110	0.06
rs11941492	SMAP2	0.0068	0.06
rs11941492	PRKCQ	0.0034	0.06
rs10275489	CTR9	0.0024	0.06
rs10275489	C11ORF73	0.0088	-0.06
rs11941492	ZNF197	0.0125	-0.06
rs12535394	NFE2L3	0.0117	0.06
rs12535394	GAR1	0.0085	0.06
rs10275489	ACACA	0.0019	-0.06
rs11133360	FCGR2C	0.0125	-0.06
rs12535394	PLEKHG4B	0.0091	0.06
rs12535394	PKNOX2	0.0055	0.06
rs12535394	ZSCAN16	0.0109	0.06
rs11941492	LZTFL1	0.0118	-0.06
rs11941492	SUZ12P1	0.0104	-0.06
rs11941492	COL19A1	0.0035	0.06
rs12535394	INSL6	0.0115	0.06
rs11941492	C4ORF3	0.0074	0.06
rs10275489	GAS2	0.0066	0.06
rs12535394	TMEM126B	0.0036	0.06
rs12535394	SIX3	0.0071	0.06
rs11941492	TMPRSS11	0.0080	0.06
	A		
rs10275489	SEPSECS	0.0121	0.06
rs12535394	ZNF124	0.0009	0.06
rs11133360	ZNF586	0.0108	-0.06
rs12535394	PRR3	0.0092	0.06
rs12535394	CXCR2P1	0.0121	0.06
rs12535394	CAPN7	0.0062	-0.06
rs11941492	TMEM155	0.0057	0.06
rs12535394	C7ORF13	0.0107	0.06
rs12535394	PAX9	0.0115	0.06
rs11941492	TSGA10IP	0.0063	0.06
rs12535394	CENPW	0.0123	0.06
rs12535394	MAGOH	0.0080	0.06
rs11941492	ANKRD33	0.0049	0.06
rs12535394	PHF20	0.0049	-0.06
rs12535394	ZC4H2	0.0056	0.06
rs12535394	UBE2D1	0.0100	0.06
rs11941492	KCNC1	0.0109	0.06
rs12535394	ZNF672	0.0053	0.06
rs10275489	TREML3P	0.0124	0.06
rs10275489	SIM2	0.0120	-0.06
rs10275489	EXT2	0.0111	-0.06
rs12535394	RBM8A	0.0015	0.06

rs11941492	TPPP2	0.0095	-0.06
rs12535394	CREBBP	0.0099	-0.06
rs12535394	PRMT5	0.0049	0.06
rs11941492	FAM228A	0.0085	0.06
rs12535394	GINS1	0.0111	0.06
rs12535394	KCNJ10	0.0052	0.06
rs12535394	SNORA5C	0.0044	-0.06
rs11941492	KCNB1	0.0047	0.06
rs12535394	IDO1	0.0096	0.06
rs10275489	KRT20	0.0051	0.06
rs10275489	OMP	0.0114	-0.06
rs11133360	PSMD8	0.0098	0.06
rs10275489	LZTS3	0.0108	-0.06
rs10275489	ORM2	0.0089	0.06
rs12535394	HHAT	0.0112	-0.06
rs11941492	DCK	0.0076	0.06
rs11941492	RTP2	0.0046	0.06
rs11941492	SENP6	0.0104	-0.06
rs10275489	PRAME	0.0057	-0.06
rs12535394	MRE11A	0.0126	0.06
rs11941492	C9ORF78	0.0065	0.06
rs10275489	CT83	0.0109	-0.06
rs12535394	CEACAM22	0.0054	0.06
	P		
rs11941492	NADK	0.0092	0.06
rs12535394	LMO4	0.0056	0.06
rs12535394	PFN2	0.0090	0.05
rs11941492	PMPCB	0.0038	-0.05
rs11133360	BCCIP	0.0017	0.05
rs11941492	GLDC	0.0118	0.05
rs12535394	PSMA8	0.0123	0.05
rs11941492	ARHGDI3	0.0125	0.05
rs10275489	TXNDC16	0.0123	0.05
rs12535394	SYCP2L	0.0088	0.05
rs11133360	FAM32A	0.0054	0.05
rs11941492	GPR22	0.0060	0.05
rs11941492	ALG9	0.0097	-0.05
rs11941492	ADIPOR2	0.0097	0.05
rs12535394	ANKRD45	0.0041	0.05
rs10275489	DDIAS	0.0045	-0.05
rs11941492	ZNF391	0.0061	-0.05
rs12535394	SHISA6	0.0094	-0.05
rs12535394	RBM34	0.0008	0.05
rs10275489	NEO1	0.0084	0.05
rs12535394	CHD1L	0.0105	0.05
rs10275489	SHISA6	0.0024	0.05
rs12535394	4-Sep	0.0098	0.05
rs11941492	DOPEY2	0.0066	0.05
rs12535394	KCNMB3	0.0072	0.05
rs10275489	NHLRC1	0.0098	-0.05

rs10275489	ZNF609	0.0119	0.05
rs11941492	LDOC1	0.0052	0.05
rs12535394	LINC00092	0.0014	0.05
rs11941492	MSI2	0.0052	0.05
rs12535394	APEX1	0.0004	0.05
rs11941492	PPP2R5A	0.0053	-0.05
rs10275489	GMNN	0.0071	-0.05
rs11941492	LURAP1L	0.0108	0.05
rs11133360	PIGM	0.0061	0.05
rs12535394	AGK	0.0113	0.05
rs10275489	CEP57	0.0124	-0.05
rs11941492	SP9	0.0024	0.05
rs11941492	IQCE	0.0115	-0.05
rs11941492	SMOC1	0.0091	-0.05
rs11133360	GGCT	0.0119	0.05
rs11941492	GTF3C1	0.0046	0.05
rs12535394	DKC1	0.0102	0.05
rs12535394	ABRACL	0.0080	0.05
rs11941492	PATL2	0.0116	0.05
rs12535394	POLR3G	0.0057	0.05
rs11941492	TIMD4	0.0009	0.05
rs12535394	TTC13	0.0070	0.05
rs11941492	ATF6B	0.0113	-0.05
rs12535394	RAD51AP2	0.0096	0.05
rs11941492	OR6F1	0.0031	0.05
rs12535394	RPP38	0.0006	0.05
rs12535394	UTP11L	0.0094	0.05
rs11941492	GORASP1	0.0101	-0.05
rs10275489	DHCR7	0.0009	-0.05
rs11941492	CDR1	0.0127	0.05
rs12535394	FAM78B	0.0100	0.05
rs12535394	DCLRE1C	0.0102	0.05
rs12535394	NRL	0.0034	0.05
rs12535394	CSTF3	0.0100	0.05
rs11941492	NUP43	0.0031	-0.05
rs12535394	OR52N2	0.0019	0.05
rs10275489	PPIL1	0.0120	-0.05
rs12535394	POLR3F	0.0099	0.05
rs11133360	TMEM99	0.0118	0.05
rs10275489	LRR1	0.0091	-0.05
rs12535394	BCL11A	0.0085	0.05
rs10275489	MPP6	0.0087	-0.05
rs11941492	SARS	0.0070	0.05
rs10275489	ABT1	0.0101	-0.05
rs12535394	ATP5C1	0.0054	0.05
rs10275489	APOA1BP	0.0105	-0.05
rs11941492	ARHGAP5	0.0066	-0.05
rs10275489	PQLC2L	0.0107	-0.05
rs12535394	GEMIN2	0.0071	0.05

rs10275489	FNBP1L	0.0119	0.05
rs11941492	LAMP1	0.0048	-0.05
rs12535394	ZIC1	0.0108	0.05
rs12535394	MTPAP	0.0095	0.05
rs12535394	SLFNL1	0.0069	0.05
rs11941492	GPR182	0.0055	0.05
rs11941492	CUL4A	0.0032	-0.05
rs12535394	FAM171A1	0.0014	0.05
rs12535394	GMPS	0.0109	0.05
rs12535394	SCNM1	0.0063	0.05
rs12535394	VANGL2	0.0057	0.05
rs10275489	ZNF720	0.0063	0.05
rs11133360	WDR53	0.0085	0.05
rs11941492	STXBP4	0.0010	0.05
rs12535394	DHCR7	0.0101	0.05
rs11941492	KIAA1045	0.0106	0.05
rs10275489	SUPT20H	0.0019	0.04
rs12535394	NFYC	0.0074	0.04
rs11941492	TPR	0.0061	-0.04
rs11941492	MARS	0.0118	0.04
rs12535394	RIOK1	0.0052	0.04
rs12535394	VAX1	0.0113	0.04
rs12535394	RGS7BP	0.0016	0.04
rs11941492	ADRA1D	0.0019	0.04
rs10275489	GOT1L1	0.0118	0.04
rs12535394	GDI2	0.0040	0.04
rs10275489	TMEM199	0.0001	0.04
rs10275489	PTGER2	0.0105	0.04
rs12535394	HEATR1	0.0072	0.04
rs10275489	TADA2A	0.0078	-0.04
rs11133360	TRAF3IP2	0.0044	0.04
rs10275489	PTCHD3P1	0.0097	-0.04
rs10275489	PFKFB2	0.0059	-0.04
rs12535394	KCNK5	0.0095	0.04
rs10275489	LELP1	0.0059	0.04
rs10275489	PSME3	0.0083	-0.04
rs11941492	OR2T27	0.0065	0.04
rs11941492	ENAH	0.0090	-0.04
rs12535394	MRPL9	0.0043	0.04
rs12535394	SOX30	0.0061	0.04
rs12535394	LTV1	0.0121	0.04
rs12535394	ANP32E	0.0028	0.04
rs10275489	VANGL2	0.0078	-0.04
rs12535394	C8ORF86	0.0018	-0.04
rs12535394	TSPYL5	0.0066	0.04
rs10275489	CCNY	0.0106	-0.04
rs11941492	DRD1	0.0113	0.04
rs11941492	CHTOP	0.0121	-0.04
rs12535394	ACBD7	0.0031	0.04

rs12535394	CTPS1	0.0124	0.04
rs12535394	ZFP42	0.0037	0.04
rs12535394	HSPA14	0.0121	0.04
rs11941492	SS18	0.0059	-0.04
rs12535394	SUV39H2	0.0103	0.04
rs12535394	ADO	0.0036	0.04
rs10275489	FAM171A1	0.0051	-0.03
rs10275489	KCNK5	0.0112	-0.03
rs10275489	HSPA14	0.0054	-0.03
rs11941492	SDCCAG8	0.0078	-0.03
rs10275489	GDF6	0.0037	0.03
rs12535394	SLCO5A1	0.0058	0.03
rs11941492	PSTK	0.0062	0.03
rs11941492	GDAP1L1	0.0089	0.03
rs11941492	BUB3	0.0126	0.03
rs11941492	CAV3	0.0041	0.03
rs10275489	SUV39H2	0.0121	-0.03
rs10275489	C8ORF86	0.0041	0.03
rs11133360	SKA2	0.0107	0.03
rs11941492	INPP5F	0.0072	0.03
rs10275489	SUPT6H	0.0064	0.03
rs10275489	CALCOCO2	0.0117	0.03
rs11941492	RHAG	0.0065	0.03
rs10275489	VTN	0.0113	0.03
rs11941492	TOM1L1	0.0112	0.03
rs11941492	BARHL1	0.0049	0.03
rs10275489	ABCC3	0.0101	0.02
rs10275489	FGFR1	0.0087	0.02
rs11941492	SRL	0.0098	0.02
rs11941492	DYNAP	0.0010	0.02
rs10275489	OPCML	0.0025	0.02
rs11941492	PAGE4	0.0080	0.02
rs11941492	NT5C1B	0.0025	0.02
rs11941492	FMR1NB	0.0092	0.02
rs11133360	MED24	0.0051	0.02
rs11941492	CLEC4M	0.0079	0.02
rs10275489	COLEC10	0.0100	0.01
rs11941492	CD5L	0.0116	0.01
rs10275489	PNMT	0.0047	0.01
rs11941492	GRK1	0.0029	0.01
rs11133360	STARD3	0.0079	0.01
rs10275489	PROSC	0.0118	0.01
rs11941492	VWC2L	0.0065	0.01
rs10275489	PSMD3	0.0030	0.01
rs10275489	BMP10	0.0103	0.01
rs11941492	CUZD1	0.0089	0.01
rs11941492	GUCA2A	0.0040	0.01
rs11941492	LINC00671	0.0066	0.01
rs11941492	NOBOX	0.0087	0.01

rs10275489	APOC4	0.0113	0.01
rs11941492	RGAG1	0.0067	0.00

Table SV. Statistical P-values obtained from ANOVA and LSD post hoc test for Fig. 7.

Joint expression of <i>ANLN</i> and <i>KDR</i>				
<i>ADA</i>	high_high	high_low	low_high	low_low
high_high	NA	0.97	0.01	0.08
high_low	NA	NA	6.40E-03	0.05
low_high	NA	NA	NA	0.53
low_low	NA	NA	NA	NA
<i>IL2RG</i>	high_high	high_low	low_high	low_low
high_high	NA	0.03	0.11	3.34E-03
high_low	NA	NA	0.54	0.3
low_high	NA	NA	NA	0.11
low_low	NA	NA	NA	NA
<i>DCLRE1C</i>	high_high	high_low	low_high	low_low
high_high	NA	0.09	5.73E-07	1.17E-07
high_low	NA	NA	2.93E-13	9.95E-14
low_high	NA	NA	NA	0.5278
low_low	NA	NA	NA	NA
<i>ORAI1</i>	high_high	high_low	low_high	low_low
high_high	NA	0.04	0.05	2.61E-03
high_low	NA	NA	7.28E-06	0.23
low_high	NA	NA	NA	1.16E-07
low_low	NA	NA	NA	NA
<i>AIRE</i>	high_high	high_low	low_high	low_low
high_high	NA	0.68	0.18	0.06
high_low	NA	NA	0.3	0.1
low_high	NA	NA	NA	0.5
low_low	NA	NA	NA	NA
<i>ZAP70</i>	high_high	high_low	low_high	low_low
high_high	NA	0.19	0.82	0.87
high_low	NA	NA	0.23	0.24
low_high	NA	NA	NA	0.95
low_low	NA	NA	NA	NA
<i>RFXANK</i>	high_high	high_low	low_high	low_low
high_high	NA	2.59E-03	0.68	<0.01
high_low	NA	NA	3.56E-03	6.42E-13
low_high	NA	NA	NA	<0.01
low_low	NA	NA	NA	NA
<i>TNFRSF13C</i>	high_high	high_low	low_high	low_low
high_high	NA	0.7	0.03	0.08
high_low	NA	NA	3.23E-03	0.02
low_high	NA	NA	NA	0.7
low_low	NA	NA	NA	NA
<i>CD19</i>	high_high	high_low	low_high	low_low
high_high	NA	0.12	0.21	0.2

high_low	NA	NA	0.75	0.83
low_high	NA	NA	NA	0.94
low_low	NA	NA	NA	NA

Significant P-values are highlighted in bold. 'high_high' represents a high expression of *ANLN* and a high expression of *KDR*, the same annotation scheme applies for the other combinations. *ANLN*, anillin actin-binding protein; *KDR*, kinase insert domain receptor; NA, not applicable.

Table SVI. Statistical P-values obtained from ANOVA and LSD post hoc test for Fig. 9.

Gene	<i>ANLN</i>		Control	<i>KDR</i>	
<i>ANLN</i> in SUM149PT cells	ANLN_d	ANLN_u	Con_ ANLN	KDR_d	KDR_u
ANLN_d	NA	2.71E-10	2.55E-04	9.73E-01	4.78E-09
ANLN_u	NA	NA	3.71E-09	2.22E-10	1.29E-04
Con_ ANLN	NA	NA	NA	1.25E-04	1.82E-07
KDR_d	NA	NA	NA	NA	3.67E-09
KDR_u	NA	NA	NA	NA	NA
<i>KDR</i> in SUM149PT cells	ANLN_d	ANLN_u	Con_ KDR	KDR_d	KDR_u
ANLN_d	NA	1.57E-07	1.47E-02	6.59E-01	4.11E-07
ANLN_u	NA	NA	2.74E-06	6.94E-08	6.01E-01
Con_ KDR	NA	NA	NA	1.90E-03	9.77E-06
KDR_d	NA	NA	NA	NA	1.68E-07
KDR_u	NA	NA	NA	NA	NA
<i>ANLN</i> in MCF10A cells	ANLN_d	ANLN_u	Con_ ANLN	KDR_d	KDR_u
ANLN_d	NA	8.41E-07	4.52E-03	5.21E-10	3.09E-01
ANLN_u	NA	NA	5.76E-05	2.50E-07	2.08E-07
Con_ ANLN	NA	NA	NA	3.36E-09	2.82E-04
KDR_d	NA	NA	NA	NA	2.58E-10
KDR_u	NA	NA	NA	NA	NA
<i>KDR</i> in MCF10A cells	ANLN_d	ANLN_u	Con_ KDR	KDR_d	KDR_u
ANLN_d	NA	0.9434645	0.08980302	0.00011269	3.89E-05
				7	
ANLN_u	NA	NA	0.27142978	0.00026933	1.85E-05
				5	
Con_ KDR	NA	NA	NA	0.00491346	2.75E-06
				4	
KDR_d	NA	NA	NA	NA	1.02E-07
KDR_u	NA	NA	NA	NA	NA

Relevant P-values shown in the manuscript are highlighted in bold. ‘ANLN_d’ and ‘ANLN_u’ represent downregulated and upregulated expression of *ANLN*, respectively, ‘KDR_d’ and ‘KDR_u’ represent downregulation and upregulation of

KDR, and 'Con_ANLN' and 'Con_KDR' are the controls of *ANLN* and *KDR*. *ANLN*, anillin actin-binding protein; *KDR*, kinase insert domain receptor; NA, not applicable.