

Supplementary Materials

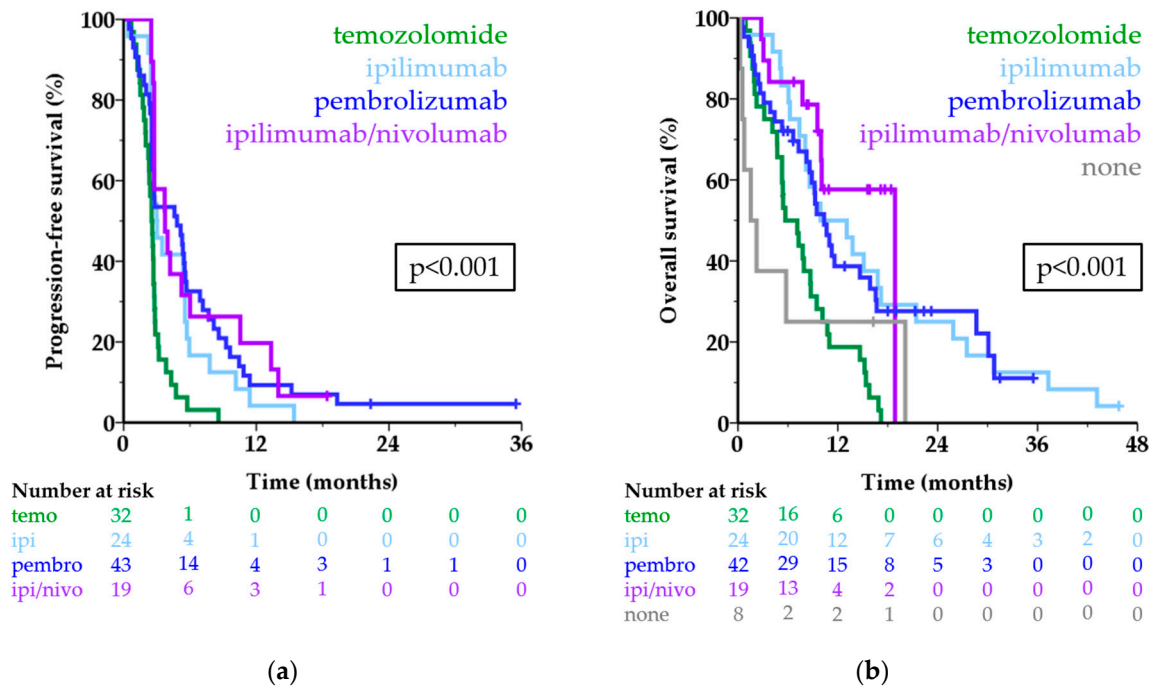


Figure S1. Survival per first-line treatment. Kaplan-Meier curves showing progression-free survival (a) and overall survival (b) per first-line treatment (temozolomide in green, ipilimumab in light blue, pembrolizumab in dark blue, combined ipilimumab/nivolumab in purple, no systemic treatment in grey) in months for metastatic uveal melanoma patients. The numbers below the figures denote the number of patients 'at risk' in each group.