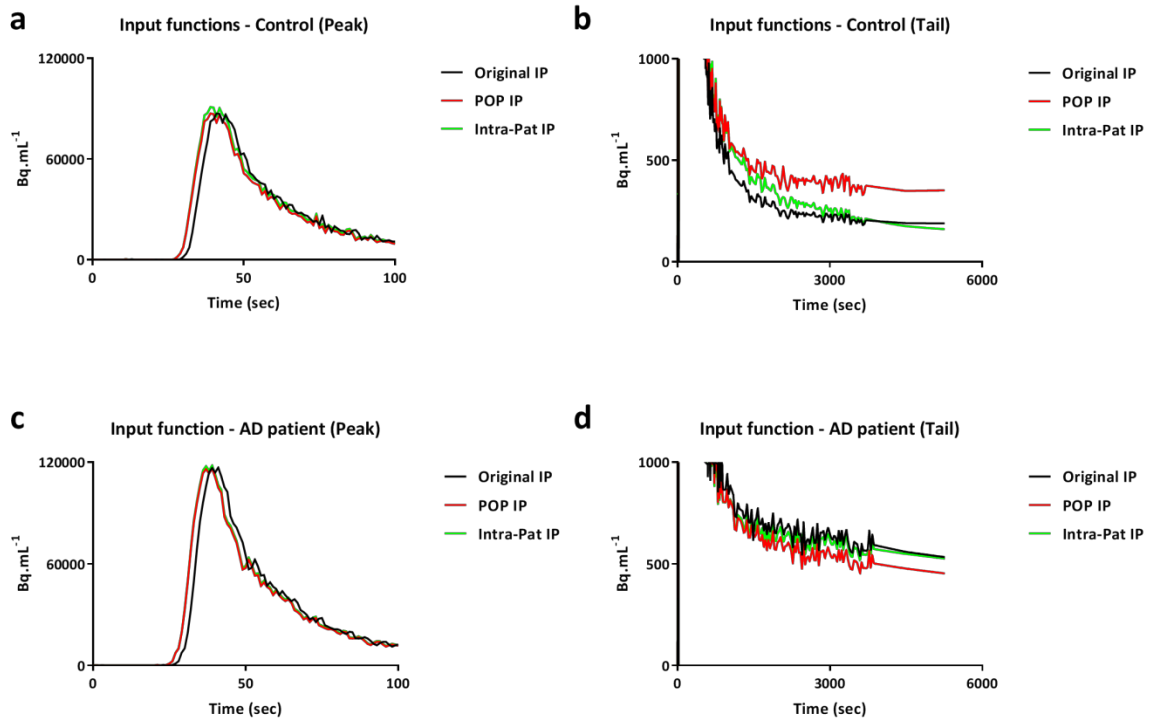


Supplementary figure 1. Parent fractions (mean \pm SD) for AD patients and controls separately.



Supplementary figure 2. Three metabolite corrected plasma input functions (Original IP, POP IP, and Intra-Pat IP) for a representative control (**a**: peak, **b**: tail) and an AD patient (**c**: peak, **d**: tail). Original IP is the input function obtained using original parent fractions; POP IP is the input function obtained using population average parent fractions; Intra-pat IP is the input function obtained using intra subject average (test-retest) parent fractions.