

Supplementary Materials: Sarcopenia Is a Negative Prognostic Factor in Patients Undergoing Transarterial Chemoembolization (TACE) for Hepatic Malignancies

Sven H. Loosen, Maximilian Schulze-Hagen, Philipp Bruners, Frank Tacke, Christian Trautwein, Christiane Kuhl, Tom Luedde and Christoph Roderburg

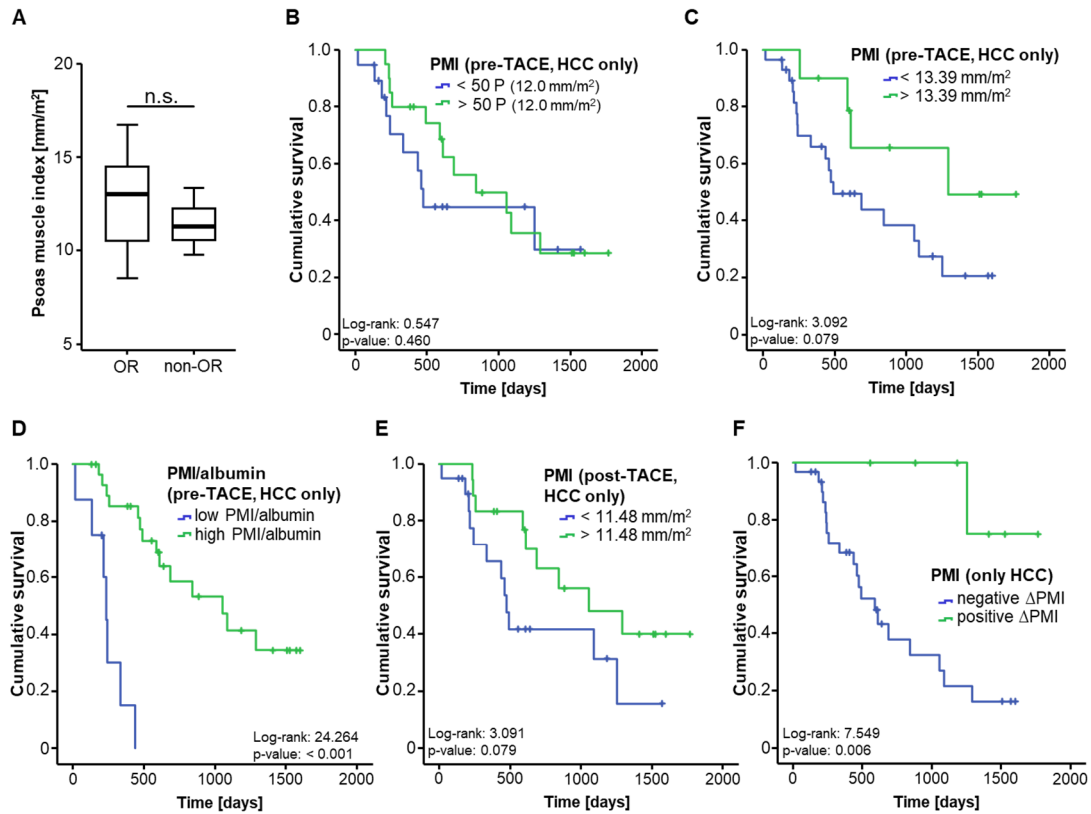


Figure S1. Evaluation of the PMI in HCC patients only ($n = 46$). (A) Patients who showed an objective response (OR) to TACE therapy have a similar PMI compared to non-responding (non-OR) patients. (B) HCC patients with a pre-interventional PMI below the 50th percentile show a trend towards an impaired prognosis. (C) Kaplan-Meier curve analysis shows a strong trend towards a reduced overall survival for sarcopenic patients with a pre-interventional PMI below 13.39 mm/m². (D) HCC patients with a low combined PMI*albumin score show a strikingly reduced overall survival. (E) Patients with a post-interventional PMI below the ideal cut-off value (11.48 mm/m²) show a strong trend towards an impaired long-term survival following TACE therapy. (F) HCC patients with progressive sarcopenia after TACE (negative Δ PMI) show a significantly reduced overall survival compared to patients with a reduced level of sarcopenia after therapy (positive Δ PMI).

Table S1. Correlation analysis between the PMI and variant laboratory markers.

Parameter	Psoas Muscle Index (PMI)	
	r	p-value
Age	0.122	0.390
Size of target lesion	0.211	0.174
Charlson Comorbidity Index	-0.040	0.815
Sodium	0.193	0.190
Potassium	-0.039	0.791
Leukocytes	-0.035	0.808
Thrombocytes	-0.075	0.604
INR	0.201	0.167

AST	0.009	0.963
ALT	0.132	0.404
LDH	0.225	0.174
GGT	-0.008	0.956
ALP	-0.081	0.584
CRP	-0.101	0.501
Albumin	0.196	0.182

INR: International Normalized Ratio, AST: aspartate transaminase, ALT: alanine transaminase, LDH: lactate dehydrogenase, GGT: γ -Glutamyl transpeptidase, ALP: alkaline phosphatase, CRP: C-reactive protein, r: Pearson correlation coefficient.