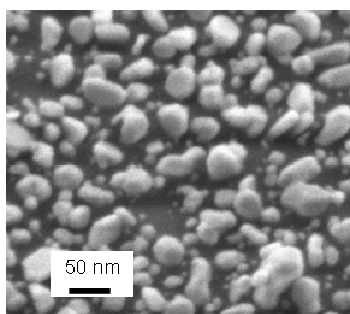


## Supporting Information

### Enhanced Fluorescence of Cy5-labeled DNA Tethered to Silver Island Films (SIFs): Fluorescence Images and Time-resolved Studies Using Single Molecule Spectroscopy

Yi Fu and Joseph R. Lakowicz\*

Figure S1. SEM images of SIF prepared using the method described in the experiment section. We thank Dr. Chandran R. Sabanayagam for providing technical support.



**Single-molecule lifetime fitting for intensity decays curves shown in Figure 7.**

The average lifetime  $\tau_{av}$  shown below the parameters is the intensity weighted average lifetime calculated from the result of the last fit.

$$\tau_{av} = \frac{\sum_i Ampl_i \cdot Lifet_i^2}{\sum_i Ampl_i Lifet_i}$$

	Glass (Figure 7A insert)	SIF ( Figure 7B insert)
Ampl <sub>1</sub>	1872	1909.5
Lifet <sub>1</sub>	2.38	0.145
Ampl <sub>2</sub>	—	180.17
Lifet <sub>2</sub>	—	0.766
$\chi^2$	1.033	1.070
$\tau_{av}$ : (ns)	2.38	0.35