

## Supplemental information table of contents

**Table S1.** Detailed p-values for percentile pairwise tests. Class I.

**Table S2.** Detailed p-values for percentile pairwise tests. Class II.

**Table S3.** P-values for Welch's t-test statistics between groups of measurements across important clinical time intervals (3, 4 and 6 months).

**Table S4.** Detailed values for percentile pairwise tests without immunized patients and measurements made closer than 30 days apart. Class I.

**Table S5.** Detailed values for percentile pairwise tests without immunized patients and measurements made closer than 30 days apart. Class II.

**Table S6.** Detailed p-values for percentile pairwise tests over the number of crossings over the clinical cut-off MFI=1000. Class I.

**Table S7.** Detailed p-values for percentile pairwise tests over the number of crossings over the clinical cut-off MFI=1000. Class II.

**Table S8.** Detailed p-values for percentile pairwise tests over the number of crossings over the clinical cut-off MFI=5000. Class I.

**Table S9.** Detailed p-values for percentile pairwise tests over the number of crossings over the clinical cut-off MFI=5000. Class II.

**Table S10.** Percentage of patients with more than N crossings of the 1000, 5000 and 10 000 MFI threshold (class I) pre-transplant, stratified on documented previous immunizing events.

**Table S11.** Percentage of patients with more than N crossings of the 1000, 5000 and 10 000 MFI threshold (class II) pre-transplant, stratified on documented previous immunizing events.

**Table S12.** Percentage of patients with at least one SAB specificity showing increase in MFI from <1000 MFI to >5000 MFI pre-transplant, stratified on documented previous immunizing events.

Figure S1. MFI variability is, on average, not affected by the interval between measurements (IBM) in patients without documented immunizing events.

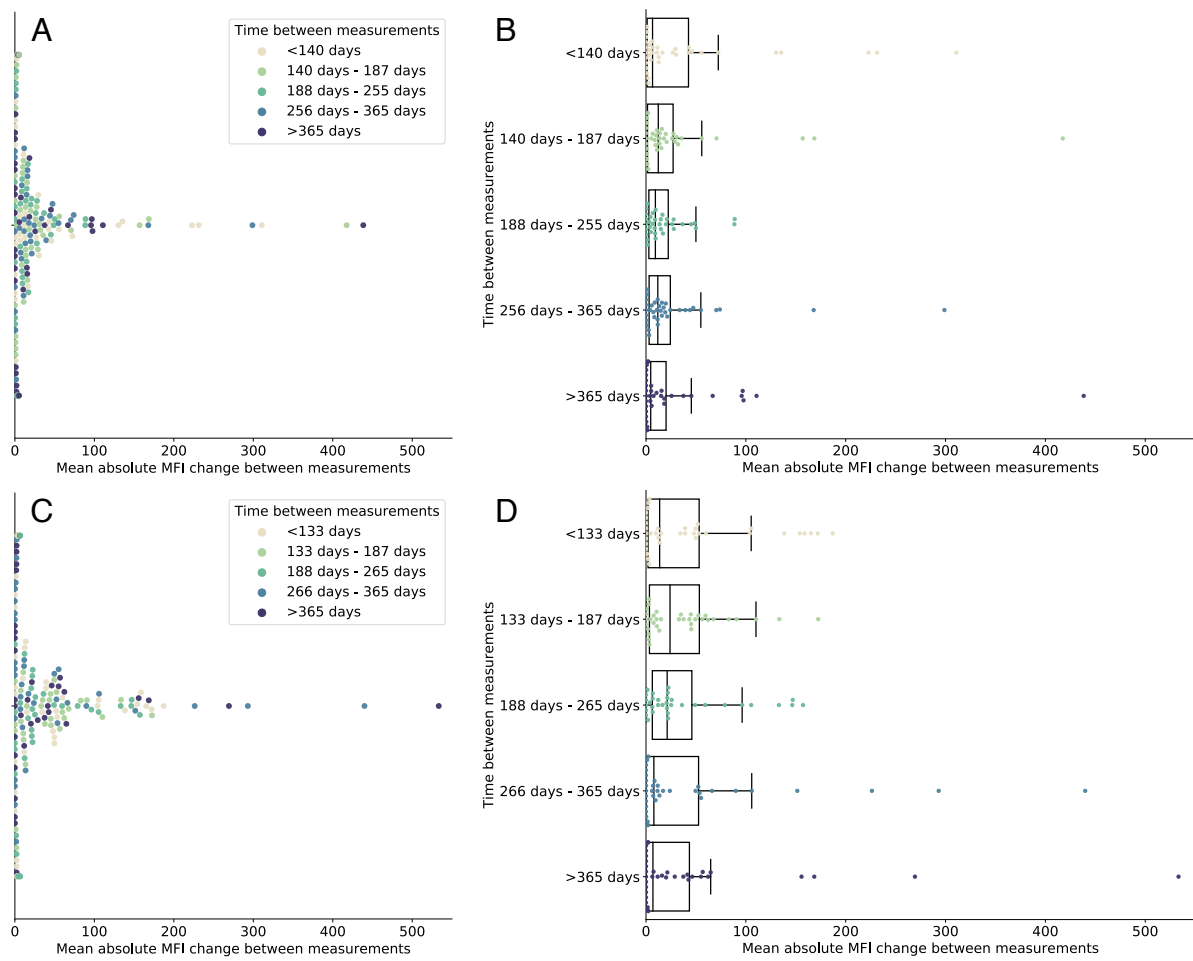


Figure S2. Gender or age does not affect pre-transplant MFI variability.

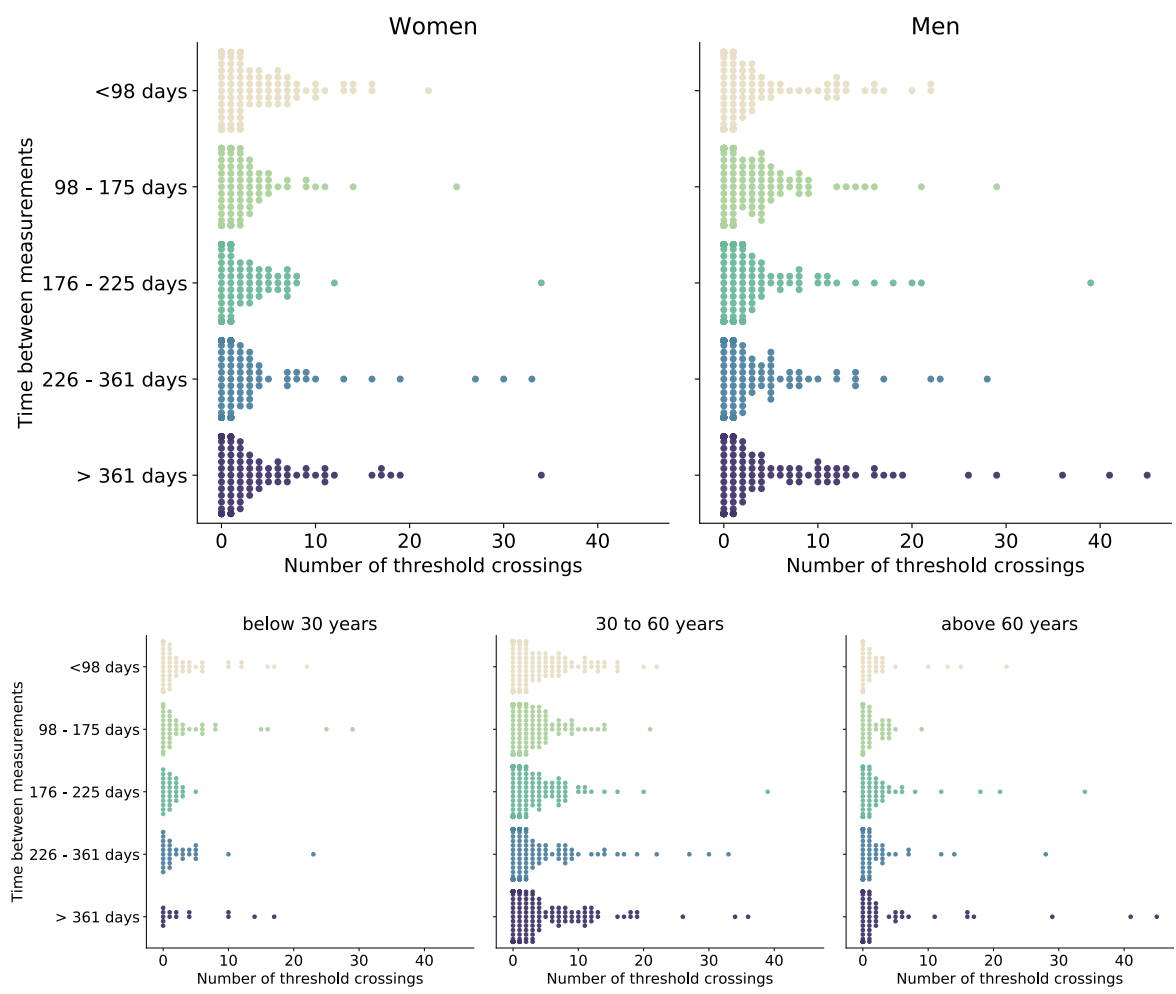


Figure S3. The alloimmunization history affects pre-transplant MFI variability.

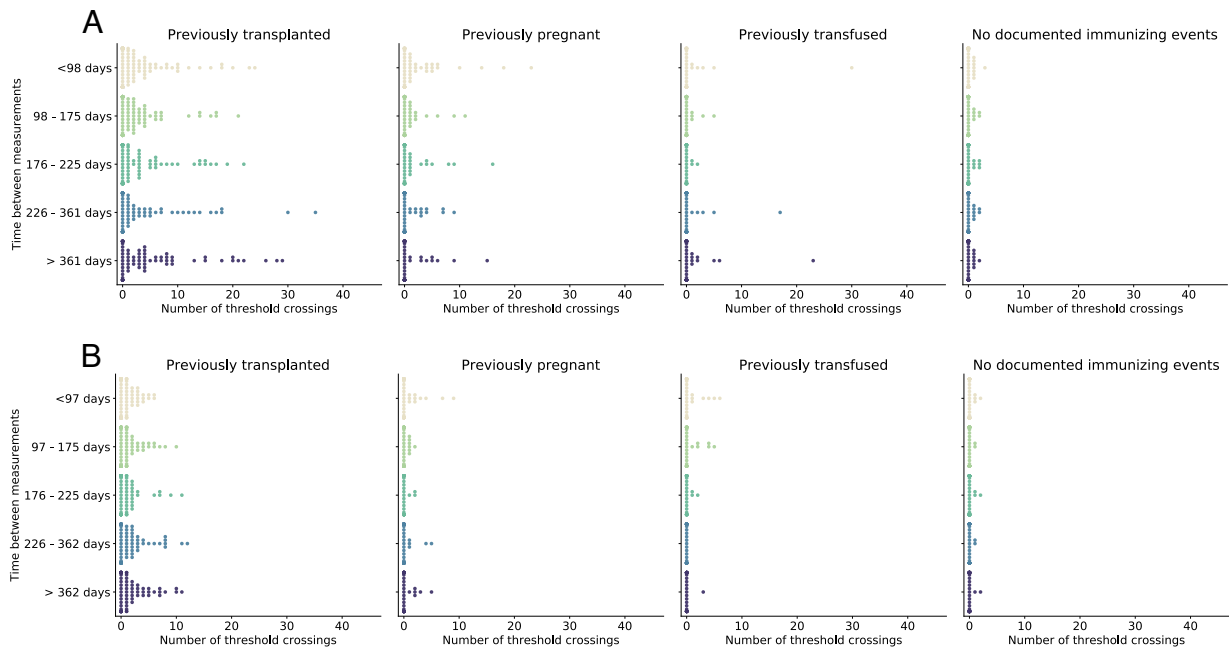


Figure S4. Mean total MFI change after transfusions occurring during the waiting time.

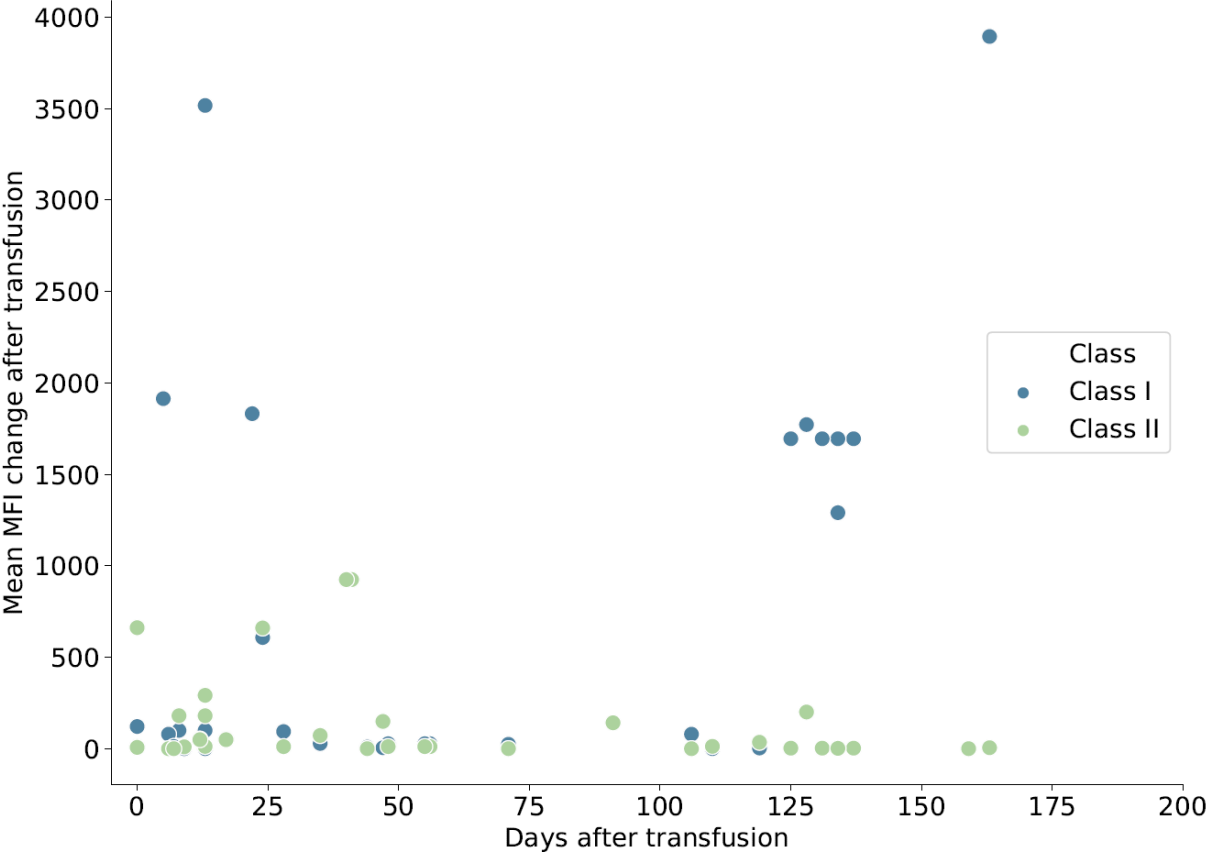


Table S1. Detailed p-values for percentile pairwise tests. Class I.

	<98 days	98 days - 175 days:	176 days - 225 days	226 days - 361 days	> 361 days
<98 days		0.00954	0.16152	0.07960	0.91378
98 days - 175 days:			0.26924	0.46471	0.01884
176 days - 225 days				0.72639	0.21631
226 days - 361 days					0.11580
> 361 days					

Table S2. Detailed p-values for percentile pairwise tests. Class II.

	<97 days	97 days - 175 days:	176 days - 225 days	226 days - 362 days	> 362 days
<97 days		0.71681	0.31121	0.89956	0.27325
97 days - 175 days:			0.50188	0.67425	0.16082
176 days - 225 days				0.34266	0.05541
226 days - 362 days					0.40267
> 362 days					

Table S3. P-values for Welch's t-test statistics between groups of measurements across important clinical time intervals (3, 4 and 6 months).

	Class I		Class II	
	With immunized	Without immunized	With immunized	Without immunized
3 months	0.06373	0.94191	0.77056	0.53905
4 months	0.27305	0.88502	0.59098	0.46024
6 months	0.71886	0.89899	0.49940	0.71302

Table S4. Detailed values for percentile pairwise tests without immunized patients and measurements made closer than 30 days apart. Class I.

	<140 days	140 days - 187 days:	188 days - 255 days	256 days - 365 days	> 365 days
<140 days		0.67765	0.08365	0.47584	0.62537
140 days - 187 days:			0.23153	0.80525	0.93078
188 days - 255 days				0.24689	0.31032
256 days - 365 days					0.88932
> 365 days					

Table S5. Detailed values for percentile pairwise tests without immunized patients and measurements made closer than 30 days apart. Class II.

	<133 days	133 days - 187 days:	188 days - 265 days	266 days - 365 days	> 365 days
<133 days		0.44897	0.53719	0.92756	0.98960
133 days - 187 days:			0.91364	0.53248	0.61052
188 days - 265 days				0.59027	0.66522
266 days - 365 days					0.95064
> 365 days					

Table S6. Detailed p-values for percentile pairwise tests over the number of crossings over the clinical cut-off MFI=1000. Class I.

	<98 days	98 days - 175 days:	176 days - 225 days	226 days - 361 days	> 361 days
<98 days		0.12826	0.21375	0.47844	0.13927
98 days - 175 days:			0.86042	0.50212	0.00704
176 days - 225 days				0.63728	0.01453
226 days - 361 days					0.04659
> 361 days					

Table S7. Detailed p-values for percentile pairwise tests over the number of crossings over the clinical cut-off MFI=1000. Class II.

	<97 days	97 days - 175 days:	176 days - 225 days	226 days - 362 days	> 362 days
<97 days		0.73094	0.95973	0.82772	0.02806
97 days - 175 days:			0.74687	0.91505	0.00871
176 days - 225 days				0.85289	0.01742
226 days - 362 days					0.01747
> 362 days					

Table S8. Detailed p-values for percentile pairwise tests over the number of crossings over the clinical cut-off MFI=5000. Class I.

	<98 days	98 days - 175 days:	176 days - 225 days	226 days - 361 days	> 361 days
<98 days		0.04489	0.14690	0.27112	0.87147
98 days - 175 days:			0.59026	0.43918	0.04146
176 days - 225 days				0.78560	0.12664
226 days - 361 days					0.23028
> 361 days					

Table S9. Detailed p-values for percentile pairwise tests over the number of crossings over the clinical cut-off MFI=5000. Class II.

	<97 days	97 days - 175 days:	176 days - 225 days	226 days - 362 days	> 362 days
<97 days		0.71673	0.11055	0.97677	0.65514
97 days - 175 days:			0.22686	0.72822	0.44599
176 days - 225 days				0.15655	0.06545
226 days - 362 days					0.70667
> 362 days					



Table S10. Percentage of patients with more than N crossings of the 1000, 5000 and 10 000 MFI threshold (class I) pre-transplant, stratified on documented previous immunizing events.

	1000 MFI		5000 MFI		10 000 MFI	
	N crossings > 0	N crossings > 1	N crossings > 0	N crossings > 1	N crossings > 0	N crossings > 1
None of the previous	41.79 %	19.40 %	10.15 %	2.69 %	1.19 %	0.30 %
Previously pregnant	59.85 %	34.47 %	28.79 %	18.18 %	13.64 %	8.33 %
Previously transfused	51.44 %	27.88 %	13.46 %	7.69 %	4.33 %	2.40 %
Previously transplanted	74.11 %	59.29 %	50.66 %	39.38 %	34.73 %	26.33 %

Table S11. Percentage of patients with more than N crossings of the 1000, 5000 and 10 000 MFI threshold (class II) pre-transplant, stratified on documented previous immunizing events.

	1000 MFI		5000 MFI		10 000 MFI	
	N crossings > 0	N crossings > 1	N crossings > 0	N crossings > 1	N crossings > 0	N crossings > 1
None of the previous	38.80 %	20.07 %	4.35 %	1.00 %	0.33 %	0.33 %
Previously pregnant	47.81 %	27.89 %	12.65 %	6.77 %	7.57 %	3.59 %
Previously transfused	42.11 %	21.58 %	8.95 %	5.79 %	1.05 %	1.05 %
Previously transplanted	63.42 %	41.12 %	39.61 %	22.73 %	32.25 %	18.40 %

Table S12. Percentage of patients with at least one SAB specificity showing increase in MFI from <1000 MFI to >5000 MFI pre-transplant, stratified on documented previous immunizing events.

	Class I	Class II
None of the previous	0.30 %	0.33 %
Previously pregnant	1.52 %	1.59 %
Previously transfused	1.92 %	1.05 %
Previously transplanted	9.51 %	6.71 %