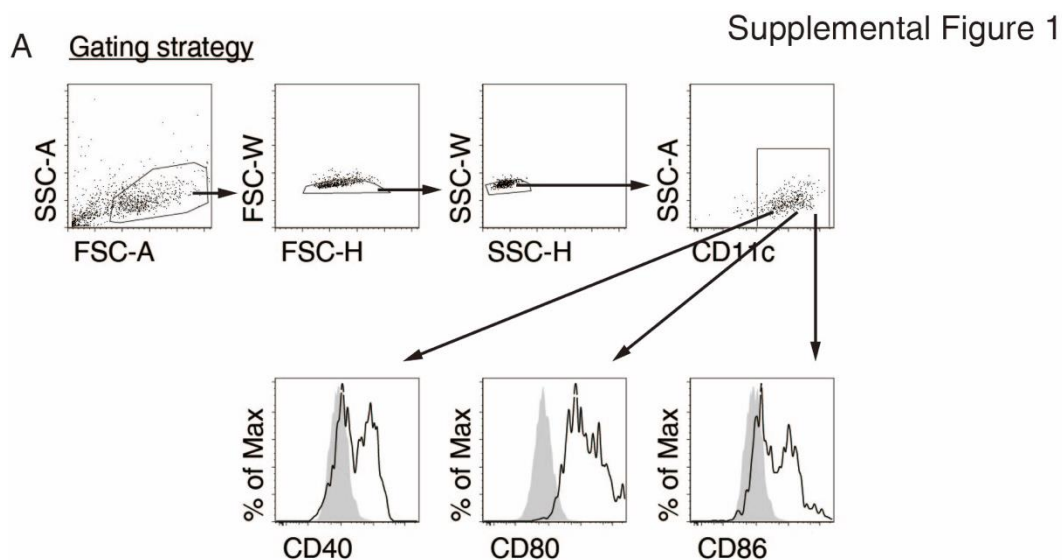
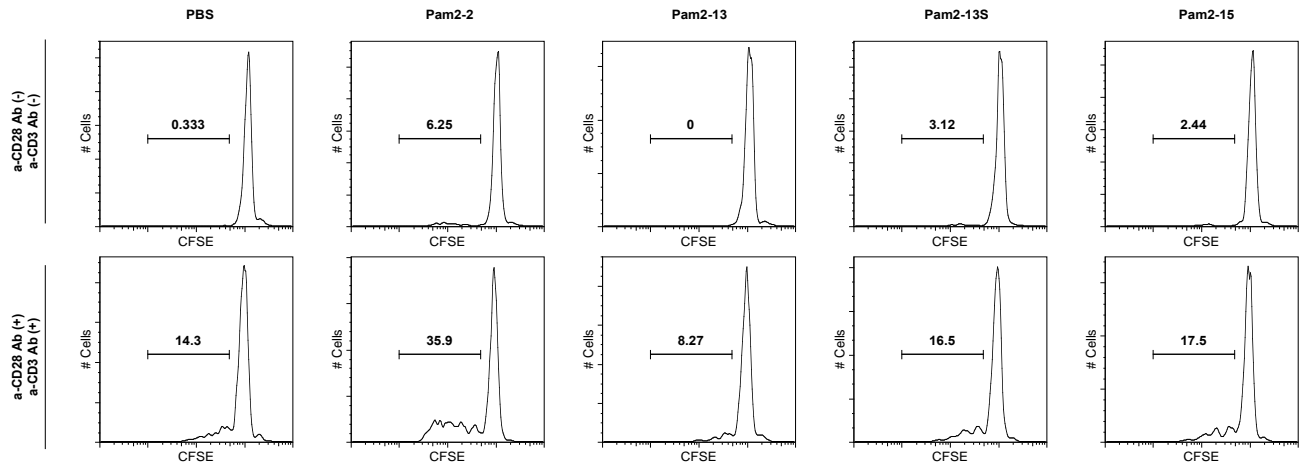


Supplementary Material



Supplemental Figure 1. Gating strategy in Figure 4. (A) Co-stimulatory molecules expression on BMDCs was analyzed by flow cytometry and gated as shown. Shaded histogram indicates isotype control staining. Open histograms indicate CD40, CD80 and CD86 staining. The data of Pam2CSK4-stimulated WT BMDCs are shown as representatives.

Gated on OT-I cells



Supplemental Figure 2. CFSE-labelled OT-1 cells ($1 \times 10^5/0.2$ ml) were plated in a 96-well plate. Pam2LP (100 mM) was added to the wells in the presence or absence of anti-CD28 Ab (0.25 μ g/ml) and nati-CD3 Ab (0.01 μ g/ml). Sixty h later, CFSE levels of OT-1 cells were evaluated by FACS.