

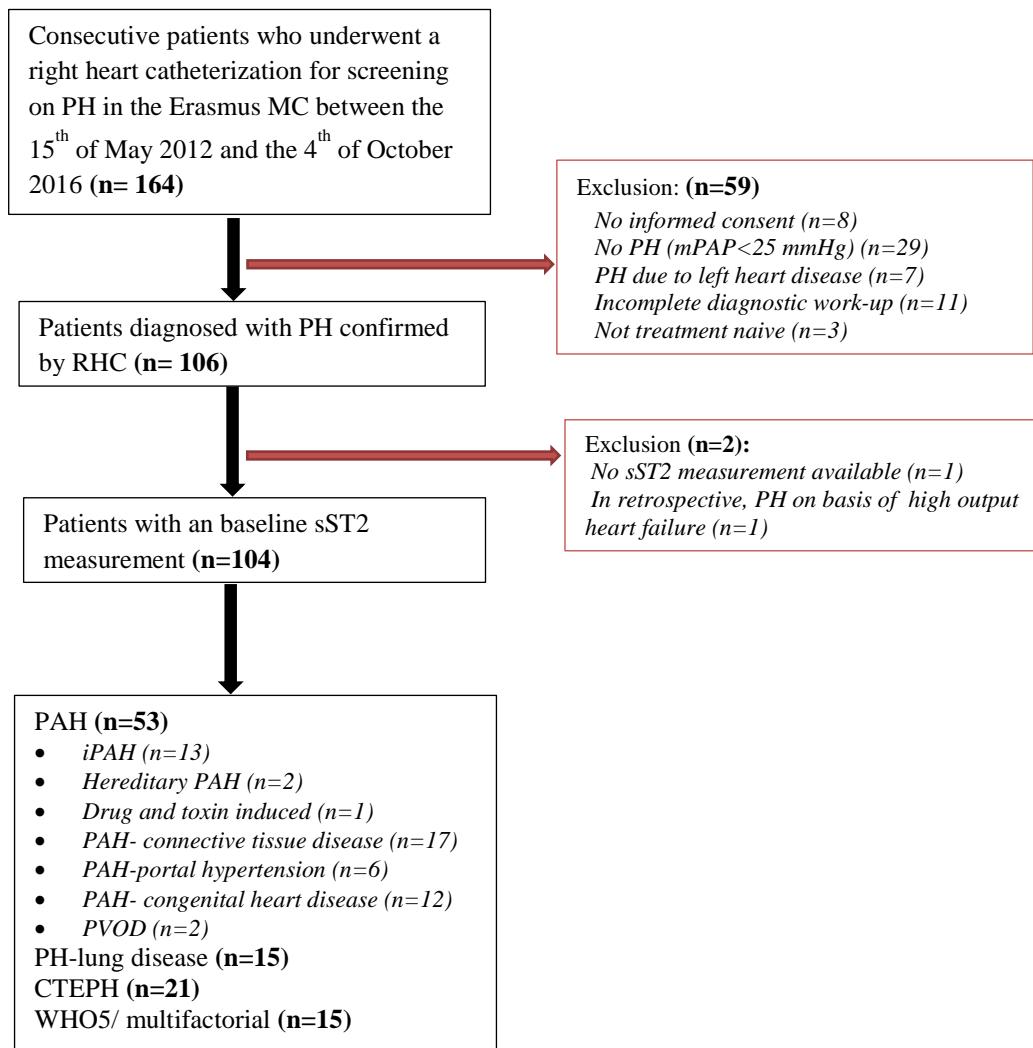
# The prognostic value of soluble ST2 in adults with pulmonary hypertension

## Authors:

Laurie W. Geenen, BSc, Vivian J.M. Baggen, MD, PhD, Robert M. Kauling, MD, Thomas Koudstaal, MD, Karin A. Boomars, MD, PhD, Eric Boersma, MD, PhD, , Jolien W. Roos-Hesselink, MD, PhD, Annemien E. van den Bosch, MD, PhD,

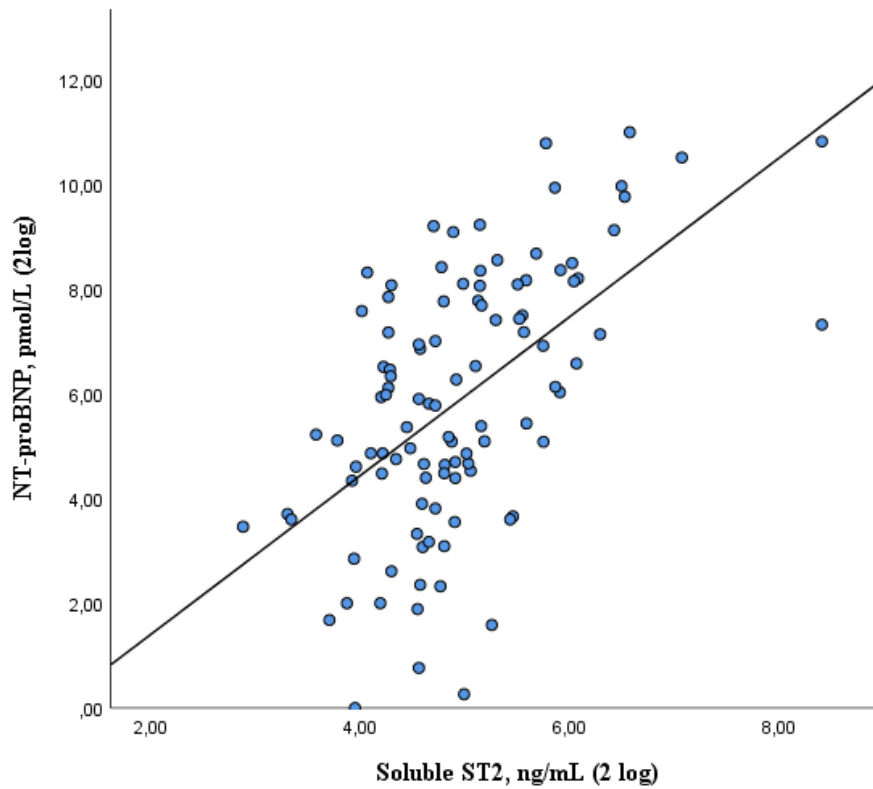
## SUPPLEMENTARY MATERIAL

<b>List of files</b>	<b>Page</b>
<b>Supplementary File 1.</b> Flowchart of the patient selection process.....	1
<b>Supplementary File 2.</b> Correlation between 2log transformed sST2 and NT-proBNP levels in adults with pulmonary hypertension.....	2
<b>Supplementary File 3.</b> Event-free survival according to the tertile distribution of sST2 levels in adults with pulmonary hypertension.....	3



**Supplementary File 1.** Patient selection process of the prospective observational study including adult patients with pulmonary hypertension.

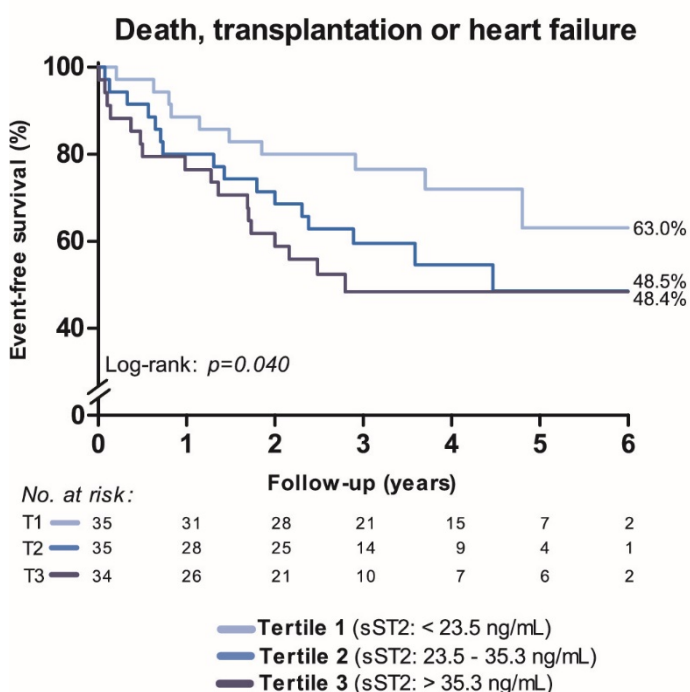
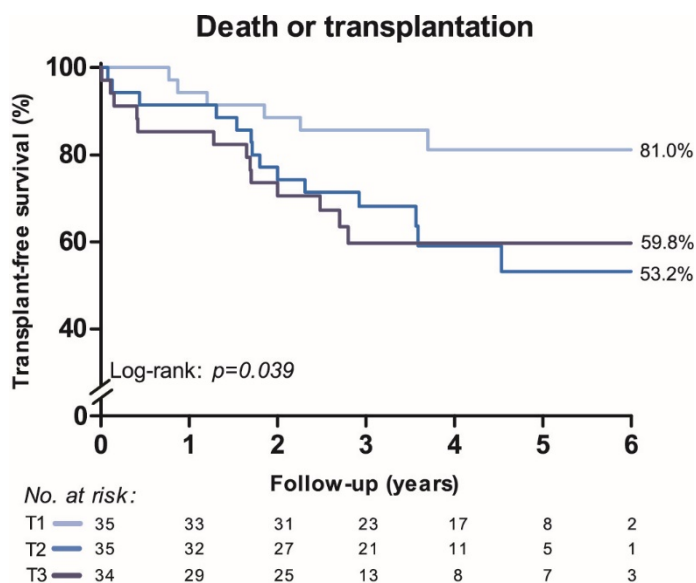
**Abbreviations:** PH = pulmonary hypertension, RHC= right heart catheterization, sST2= soluble suppression of tumorigenicity-2, mPAP= mean pulmonary artery pressure, PAH= pulmonary arterial hypertension, iPAH= idiopathic pulmonary arterial hypertension, PVOD= pulmonary veno-occlusive disease, CTEPH= chronic thromboembolic pulmonary hypertension, WHO5= world health organization class 5.



**Supplementary File 2.** Correlation between 2log transformed sST2 and NT-proBNP levels in adults with pulmonary hypertension.

Spearman correlation coefficient:  $r=0.54$ ,  $p=0.001$

**Abbreviations:** sST2= soluble suppression of tumorigenicity-2, NT-proBNP= N-terminal pro-B type natriuretic peptide.



**Supplementary File 3.** Event-free survival according to the tertile distribution of sST2 in adults with pulmonary hypertension.

**Legend:** T1= first tertile, T2= second tertile, T3= third tertile. The percentage shows the cumulative end-point free survival at 6 years of follow-up according to each tertile of the sST2 distribution.