

Supplementary Materials: Lipophilic Toxins in Galicia (NW Spain) between 2014 and 2017: Incidence on the Main Molluscan Species and Analysis of the Monitoring Efficiency

Juan Blanco, Fabiola Arévalo, Jorge Correa and Ángeles Moroño

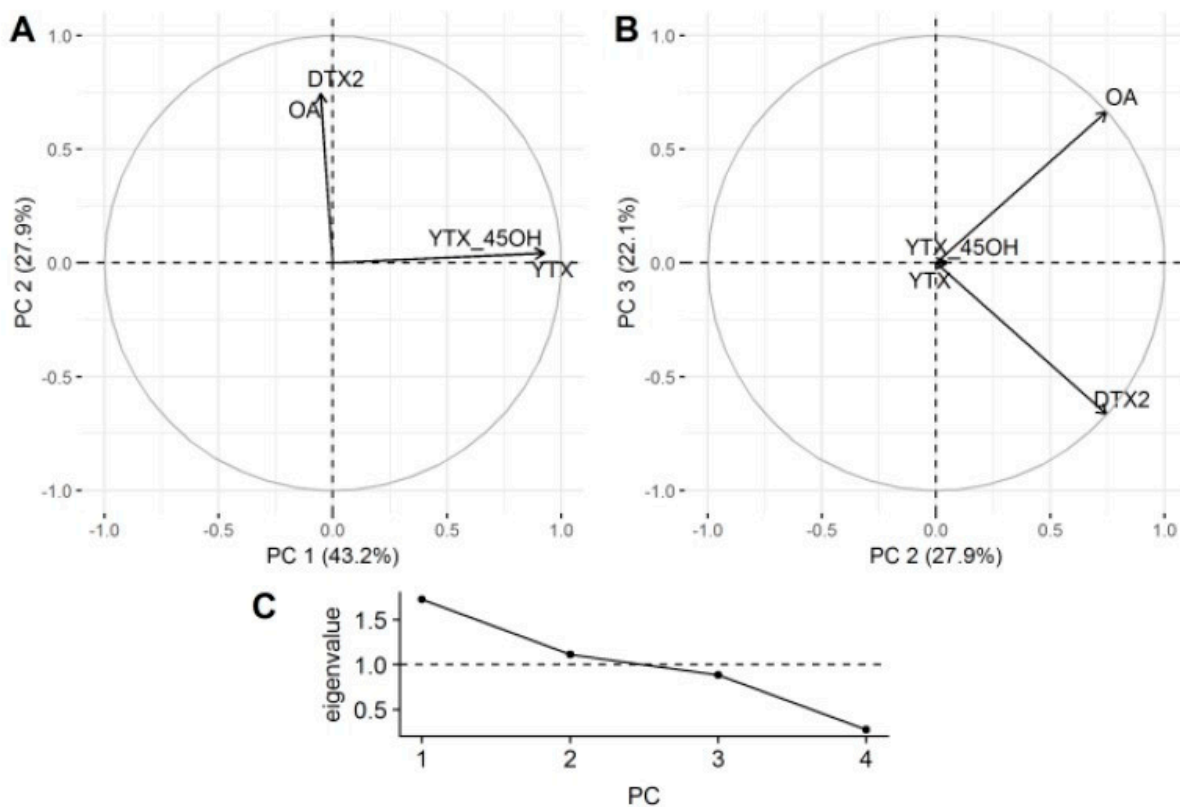


Figure S1. Principal component analysis of the observations using the toxins as variables.

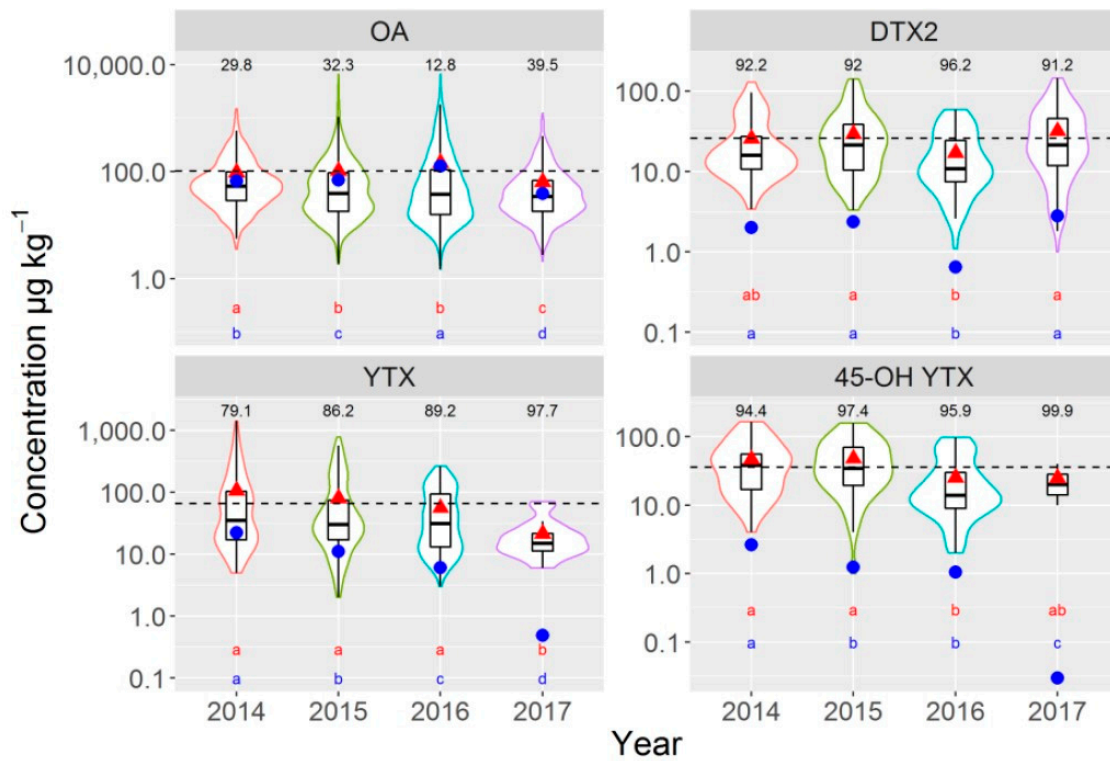


Figure S2. Violin plots of the concentration of OA, DTX2, YTX and 45-OH YTX in the four years studied.

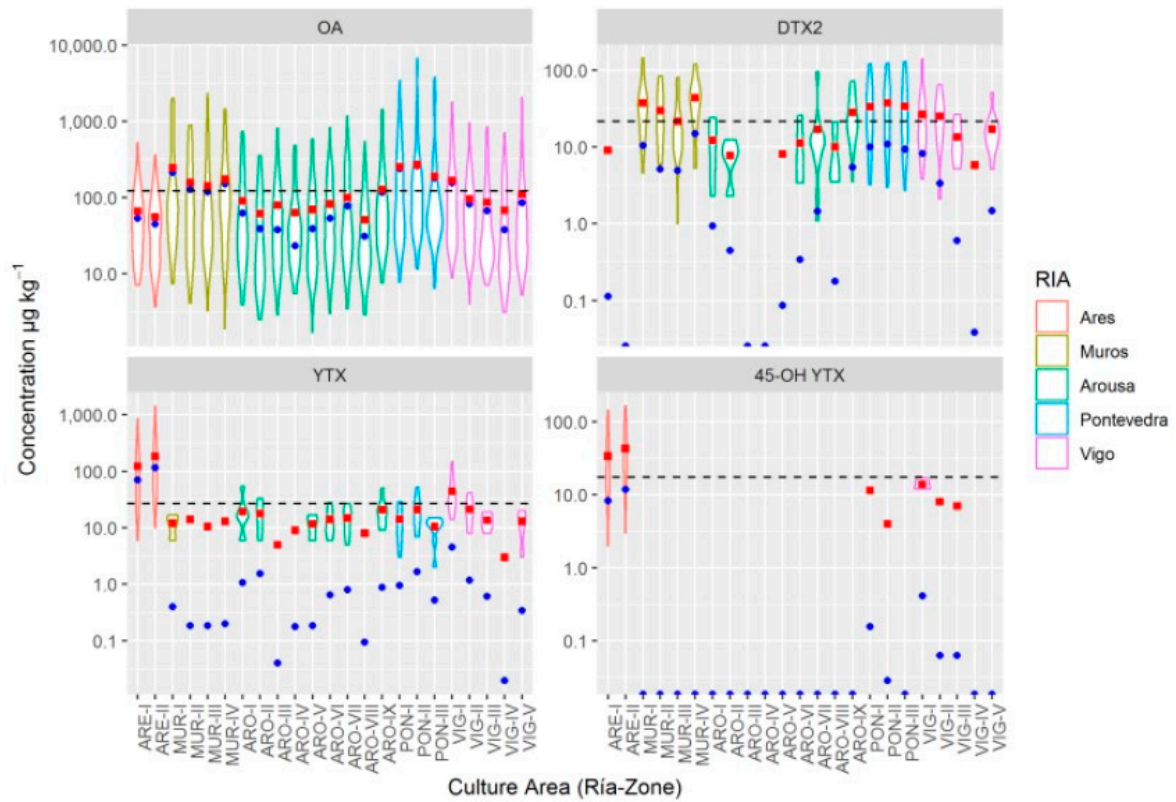


Figure S3. Violin plots of toxin concentrations in different mussel culture areas.

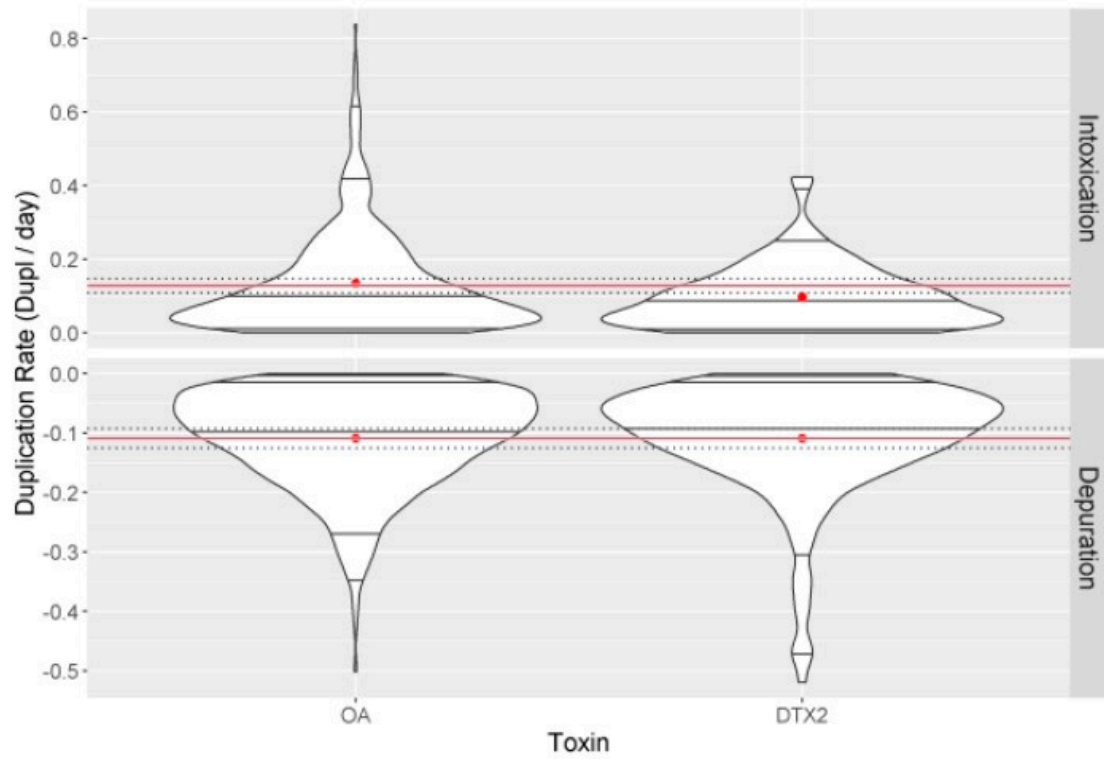


Figure S4. Violin plots of the estimated duplication rates of the toxin concentration in all the studied area.

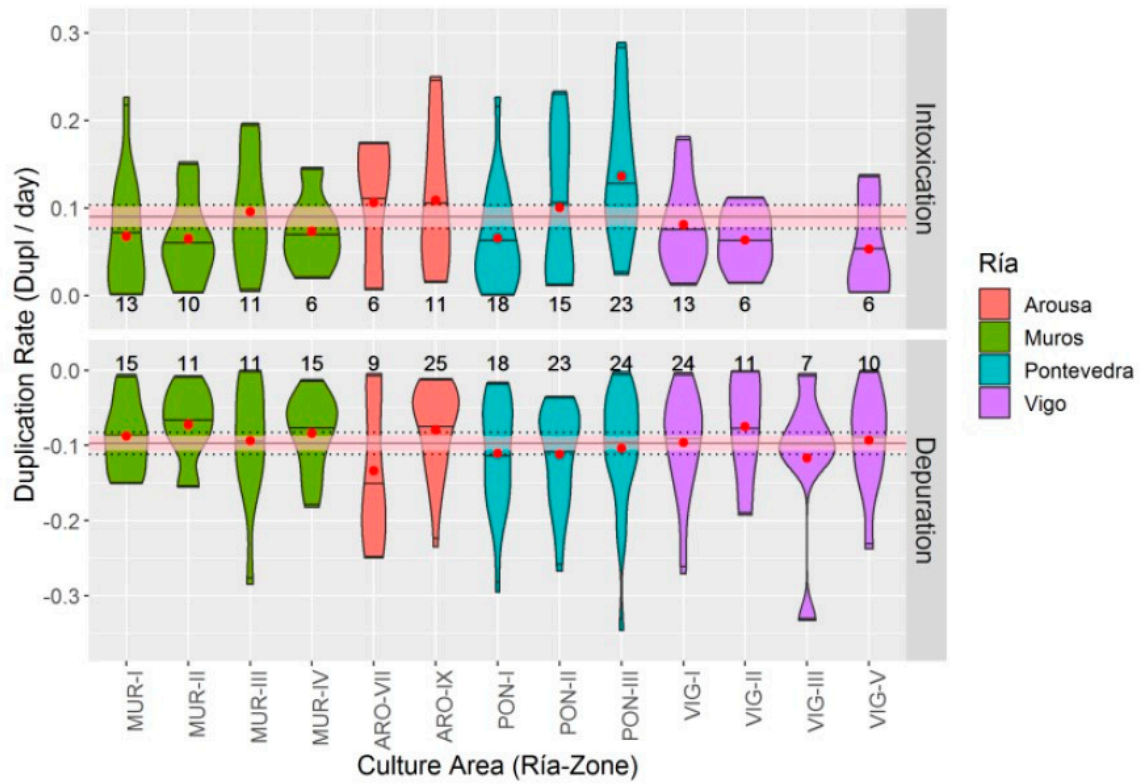


Figure S5. Plots of the duplication rates of DTX2 in the mussel culture areas after removing outliers.

Table S1. Number of samples in which all the EU regulated toxins were analysed, and numbers of samples with all toxins below and over LOD, and below and over the regulatory limit.

Species	Year	N Samples	N ≥ LOD	N < LOD	≥ Threshold	< Threshold
<i>V. corrugata</i>	2014	48	24	24	8	40
<i>V. corrugata</i>	2015	38	30	8	2	36
<i>V. corrugata</i>	2016	38	31	7	1	37
<i>V. corrugata</i>	2017	36	12	24	1	35
<i>R. decussatus</i>	2014	1	1	0	0	1
<i>R. decussatus</i>	2015	15	13	2	0	15
<i>R. decussatus</i>	2016	16	16	0	2	14
<i>R. philippinarum</i>	2014	45	30	15	2	43
<i>R. philippinarum</i>	2015	20	17	3	1	19
<i>R. philippinarum</i>	2016	45	43	2	3	42
<i>R. philippinarum</i>	2017	4	3	1	0	4
<i>P. rhomboides</i>	2014	20	20	0	5	15
<i>P. rhomboides</i>	2015	30	24	6	6	24
<i>P. rhomboides</i>	2016	19	19	0	3	16
<i>P. rhomboides</i>	2017	12	4	8	0	12
<i>C. edule</i>	2014	141	89	52	15	126
<i>C. edule</i>	2015	169	141	28	19	150
<i>C. edule</i>	2016	214	193	21	27	187
<i>C. edule</i>	2017	189	134	55	5	184
<i>E. siliqua</i>	2014	5	3	2	0	5
<i>E. siliqua</i>	2015	14	11	3	2	12
<i>E. siliqua</i>	2016	10	7	3	0	10
<i>E. siliqua</i>	2017	11	6	5	0	11
wild mussel	2014	79	43	36	1	78
wild mussel	2015	414	201	213	7	407
wild mussel	2016	319	248	71	14	305
wild mussel	2017	421	197	224	5	416
raft mussel	2014	389	324	65	46	343
raft mussel	2015	875	684	191	106	769
raft mussel	2016	799	740	59	193	606
raft mussel	2017	987	656	331	78	909
<i>E. arcuatus</i>	2014	36	28	8	6	30
<i>E. arcuatus</i>	2015	42	34	8	5	37
<i>E. arcuatus</i>	2016	12	9	3	0	12
<i>E. arcuatus</i>	2017	12	4	8	0	12
<i>Ma. gigas</i>	2016	2	2	0	0	2
<i>O. edulis</i>	2014	2	2	0	0	2
<i>O. edulis</i>	2015	4	4	0	0	4
<i>O. edulis</i>	2016	1	0	1	0	1
<i>A. opercularis</i>	2014	15	15	0	5	10
<i>A. opercularis</i>	2015	7	7	0	2	5
<i>A. opercularis</i>	2017	5	5	0	0	5
Total		5561	4074	1487	570	4991