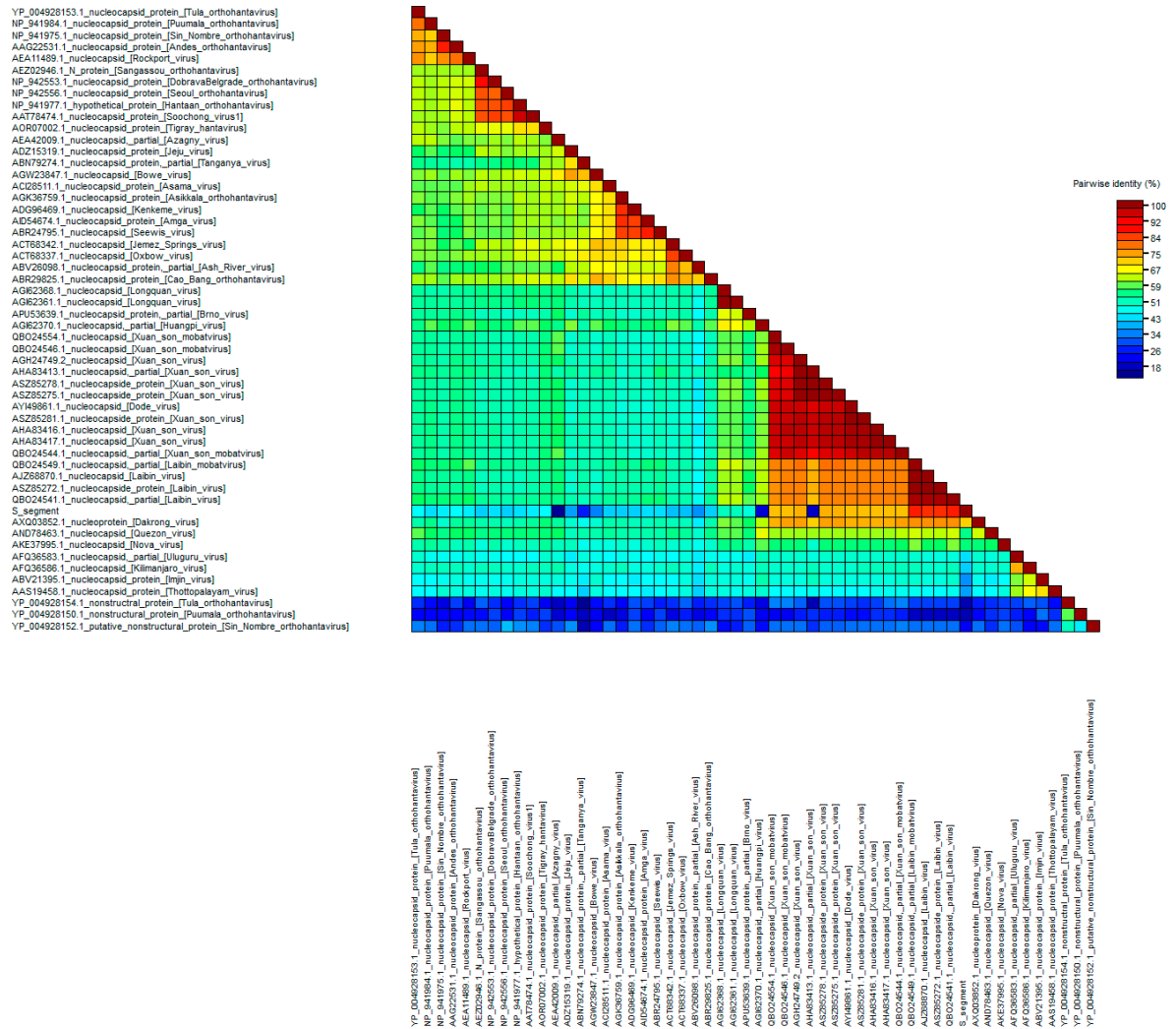


Supplementary Materials

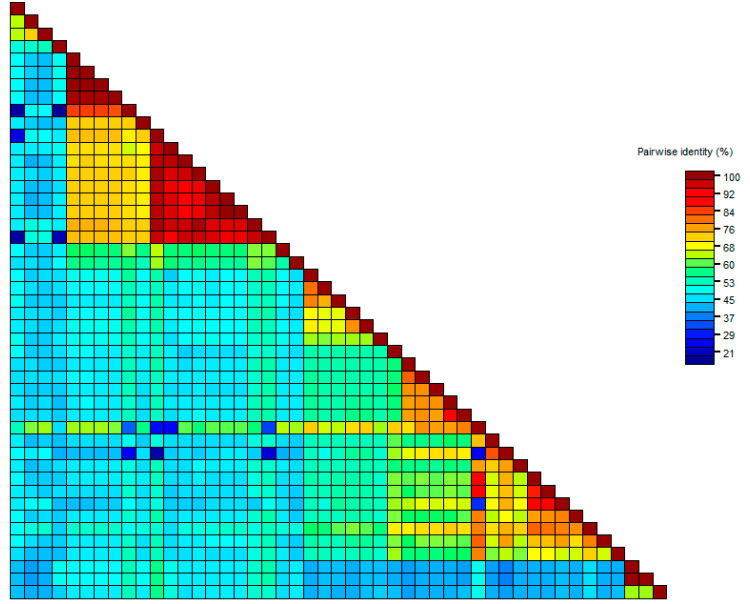
Table S1: List of bat species examined in this study

Family	Genus	Species	Common name
Emballonuridae	<i>Saccolaimus</i>	<i>saccolaimus</i>	Bare-rumped Sheath-tail-bat
Hipposideridae	<i>Hipposideros</i>	<i>ater</i>	Dusky Leaf-nosed Bat
Hipposideridae	<i>Hipposideros</i>	<i>cervinus</i>	Fawn-colored Leaf-nosed Bat
Hipposideridae	<i>Hipposideros</i>	<i>diadema</i>	Diadem Leaf-nosed Bat
Hipposideridae	<i>Hipposideros</i>	<i>dyacorum</i>	Dayak Leaf-nosed Bat
Hipposideridae	<i>Hipposideros</i>	<i>galeritus</i>	Cantor's Leaf-nosed Bat
Hipposideridae	<i>Hipposideros</i>	<i>larvatus</i>	Horsfield's Leaf-nosed Bat
Megadermatidae	<i>Megaderma</i>	<i>spasma</i>	Lesser False Vampire
Miniopteridae	<i>Miniopterus</i>	<i>australis</i>	Little Long-fingered Bat
Molossidae	<i>Chaerephon</i>	<i>plicatus</i>	Wrinkle-lipped Free-tailed Bat
Nycteridae	<i>Nycteris</i>	<i>tragata</i>	Malayan Slit-faced Bat
Pteropodidae	<i>Balionycteris</i>	<i>maculata</i>	Spotted-winged Fruit Bat
Pteropodidae	<i>Cynopterus</i>	<i>brachyotis</i>	Lesser Dog-faced Fruit Bat
Rhinolophidae	<i>Rhinolophus</i>	<i>affinis</i>	Intermediate Horseshoe Bat
Rhinolophidae	<i>Rhinolophus</i>	<i>borneensis</i>	Bornean Horseshoe Bat
Rhinolophidae	<i>Rhinolophus</i>	<i>creaghi</i>	Creagh's Horseshoe Bat
Rhinolophidae	<i>Rhinolophus</i>	<i>philippinensis</i>	Large-eared Horseshoe Bat
Rhinolophidae	<i>Rhinolophus</i>	<i>trifoliatus</i>	Trefoil Horseshoe Bat
Vespertilionidae	<i>Glischropus</i>	<i>tylopus</i>	Common Thick-thumbed Bat
Vespertilionidae	<i>Kerivoula</i>	<i>hardwickii</i>	
Vespertilionidae	<i>Kerivoula</i>	<i>minuta</i>	Least Woolly Bat
Vespertilionidae	<i>Kerivoula</i>	<i>papillosa</i>	Papillose Woolly Bat
Vespertilionidae	<i>Kerivoula</i>	<i>pellucida</i>	Clear-winged Woolly Bat
Vespertilionidae	<i>Murina</i>	<i>rozendaali</i>	Gilded Tube-nosed Bat
Vespertilionidae	<i>Murina</i>	<i>aenea</i>	Bronze Tube-nosed Bat
Vespertilionidae	<i>Myotis</i>	<i>horsfieldi</i>	Horsfield's Myotis
Vespertilionidae	<i>Myotis</i>	<i>muricola</i>	
Vespertilionidae	<i>Myotis</i>	<i>ridleyi</i>	Ridley's Myotis
Vespertilionidae	<i>Phoniscus</i>	<i>atrox</i>	Groove-toothed Trumpet-eared Bat
Vespertilionidae	<i>Tylonycteris</i>	<i>pachypus</i>	Lesser Bamboo Bat

Figure S1: Pairwise alignment of S, M and L segments of viruses in *Hantaviridae* family compared to Sarawak mobatvirus. Our sequence is indicated with S_segment, M_segment and L_segment titles.



AFQ36587.1_glycoprotein_partial_[Kilimanjaro_virus]
 YP_00191125.1_envelope_glycoprotein_precursor_[Tshotopalayam_virus]
 ABV21398.1_glycoprotein_[Imjin_virus]
 AFQ36584.1_glycoprotein_partial_[Olguru_virus]
 OBO24550.1_glycoprotein_[Labin_mobatvirus]
 OBO24542.1_glycoprotein_[Labin_virus]
 ASZ85273.1_glycoprotein_[Labin_virus]
 AJZ26871.1_glycoprotein_[Labin_virus]
 M_segment
 AXQ03853.1_glycoprotein_[Dakrong_virus]
 AHX37571.1_glycoprotein_partial_[Xuan_son_virus]
 OBO24555.1_glycoprotein_partial_[Xuan_son_mobatvirus]
 OBO24547.1_glycoprotein_[Xuan_son_mobatvirus]
 ASZ285282.1_glycoprotein_[Xuan_son_virus]
 ANA76341.2_glycoprotein_[Xuan_son_virus]
 ASZ85279.1_glycoprotein_[Xuan_son_virus]
 ASZ85276.1_glycoprotein_[Xuan_son_virus]
 AY49690.1_glycoprotein_partial_[Dode_virus]
 QBO24545.1_glycoprotein_partial_[Xuan_son_mobatvirus]
 AKE37998.1_glycoprotein_[Nova_virus]
 AND78464.1_glycoprotein_[Quezon_virus]
 NP_942586.1_Glycoproteins_G1_and_G2_precursor_[Tula_orthohantavirus]
 CA33922.1_G1_and_G2_proteins_[Prospect_Hill_orthohantavirus]
 NP_941983.1_glycoprotein_glycoprotein_precursor_[Puumala_orthohantavirus]
 AAG22532.1_G1_and_G2_surface_glycoprotein_precursor_[Andes_orthohantavirus]
 NP_941974.1_glycoprotein_precursor_[Sin_Nombre_orthohantavirus]
 EEA11485.1_glycoprotein_[Rockport_virus]
 AOR07001.1_glycoprotein_precursor_[Tgray_hantavirus]
 AEZ02947.1_glycoprotein_precursor_[Sangassou_orthohantavirus]
 NP_942554.1_glycoprotein_precursor_G1G2_[DobravaBelgrade_orthohantavirus]
 NP_942557.1_glycoprotein_precursor_[Seoul_orthohantavirus]
 NP_941978.1_hypothetical_protein_hTNVMgp1_[hantaan_orthohantavirus]
 AAT77478.1_glycoprotein_precursor_[Soochong_virus]
 ABR24796.1_glycoprotein_precursor_partial_[Seewis_virus]
 AGW23848.1_glycoprotein_[Bowe_virus]
 EEA42010.1_glycoprotein_partial_[Azagny_virus]
 ADZ15320.2_envelope_glycoprotein_partial_[Jeju_virus]
 AGK36762.1_glycoprotein_precursor_[Asikata_orthohantavirus]
 AD54673.1_envelope_glycoprotein_[Ama_virus]
 ADG96470.1_glycoprotein_partial_[Kenkema_virus]
 AC28508.1_envelope_glycoprotein_[Asama_virus]
 ACT68343.1_glycoprotein_partial_[Ienez_Springs_virus]
 ABR29829.1_glycoprotein_[Cao_Bang_orthohantavirus]
 ACT68338.1_glycoprotein_[Oxbow_virus]
 AGR2348.1_glycoprotein_[Longquan_virus]
 AGR2343.1_glycoprotein_[Longquan_virus]
 APUS3640.1_glycoprotein_precursor_partial_[Brno_virus]



AFQ36587.1_glycoprotein_partial_[Kilimanjaro_virus]
 YP_00191125.1_envelope_glycoprotein_precursor_[Tshotopalayam_virus]
 ABV21398.1_glycoprotein_[Imjin_virus]
 AFQ36584.1_glycoprotein_partial_[Olguru_virus]
 OBO24550.1_glycoprotein_[Labin_mobatvirus]
 OBO24542.1_glycoprotein_[Labin_virus]
 ASZ85273.1_glycoprotein_[Labin_virus]
 AJZ26871.1_glycoprotein_[Labin_virus]
 M_segment
 AXQ03853.1_glycoprotein_[Dakrong_virus]
 AHX37571.1_glycoprotein_partial_[Xuan_son_virus]
 OBO24555.1_glycoprotein_partial_[Xuan_son_mobatvirus]
 OBO24547.1_glycoprotein_[Xuan_son_mobatvirus]
 ASZ285282.1_glycoprotein_[Xuan_son_virus]
 ANA76341.2_glycoprotein_[Xuan_son_virus]
 ASZ85279.1_glycoprotein_[Xuan_son_virus]
 ASZ85276.1_glycoprotein_[Xuan_son_virus]
 AY49690.1_glycoprotein_partial_[Dode_virus]
 QBO24545.1_glycoprotein_partial_[Xuan_son_mobatvirus]
 AKE37998.1_glycoprotein_[Nova_virus]
 AND78464.1_glycoprotein_[Quezon_virus]
 NP_942586.1_Glycoproteins_G1_and_G2_precursor_[Tula_orthohantavirus]
 CA33922.1_G1_and_G2_proteins_[Prospect_Hill_orthohantavirus]
 NP_941983.1_glycoprotein_glycoprotein_precursor_[Puumala_orthohantavirus]
 AAG22532.1_G1_and_G2_surface_glycoprotein_precursor_[Andes_orthohantavirus]
 NP_941974.1_glycoprotein_precursor_[Sin_Nombre_orthohantavirus]
 EEA11485.1_glycoprotein_[Rockport_virus]
 AOR07001.1_glycoprotein_precursor_[Tgray_hantavirus]
 AEZ02947.1_glycoprotein_precursor_[Sangassou_orthohantavirus]
 NP_942554.1_glycoprotein_precursor_G1G2_[DobravaBelgrade_orthohantavirus]
 NP_942557.1_glycoprotein_precursor_[Seoul_orthohantavirus]
 NP_941978.1_hypothetical_protein_hTNVMgp1_[hantaan_orthohantavirus]
 AAT77478.1_glycoprotein_precursor_[Soochong_virus]
 ABR24796.1_glycoprotein_precursor_partial_[Seewis_virus]
 AGW23848.1_glycoprotein_[Bowe_virus]
 EEA42010.1_glycoprotein_partial_[Azagny_virus]
 ADZ15320.2_envelope_glycoprotein_partial_[Jeju_virus]
 AGK36762.1_glycoprotein_precursor_[Asikata_orthohantavirus]
 AD54673.1_envelope_glycoprotein_[Ama_virus]
 ADG96470.1_glycoprotein_partial_[Kenkema_virus]
 AC28508.1_envelope_glycoprotein_[Asama_virus]
 ACT68343.1_glycoprotein_partial_[Ienez_Springs_virus]
 ABR29829.1_glycoprotein_[Cao_Bang_orthohantavirus]
 ACT68338.1_glycoprotein_[Oxbow_virus]
 AGR2348.1_glycoprotein_[Longquan_virus]
 AGR2343.1_glycoprotein_[Longquan_virus]
 APUS3640.1_glycoprotein_precursor_partial_[Brno_virus]

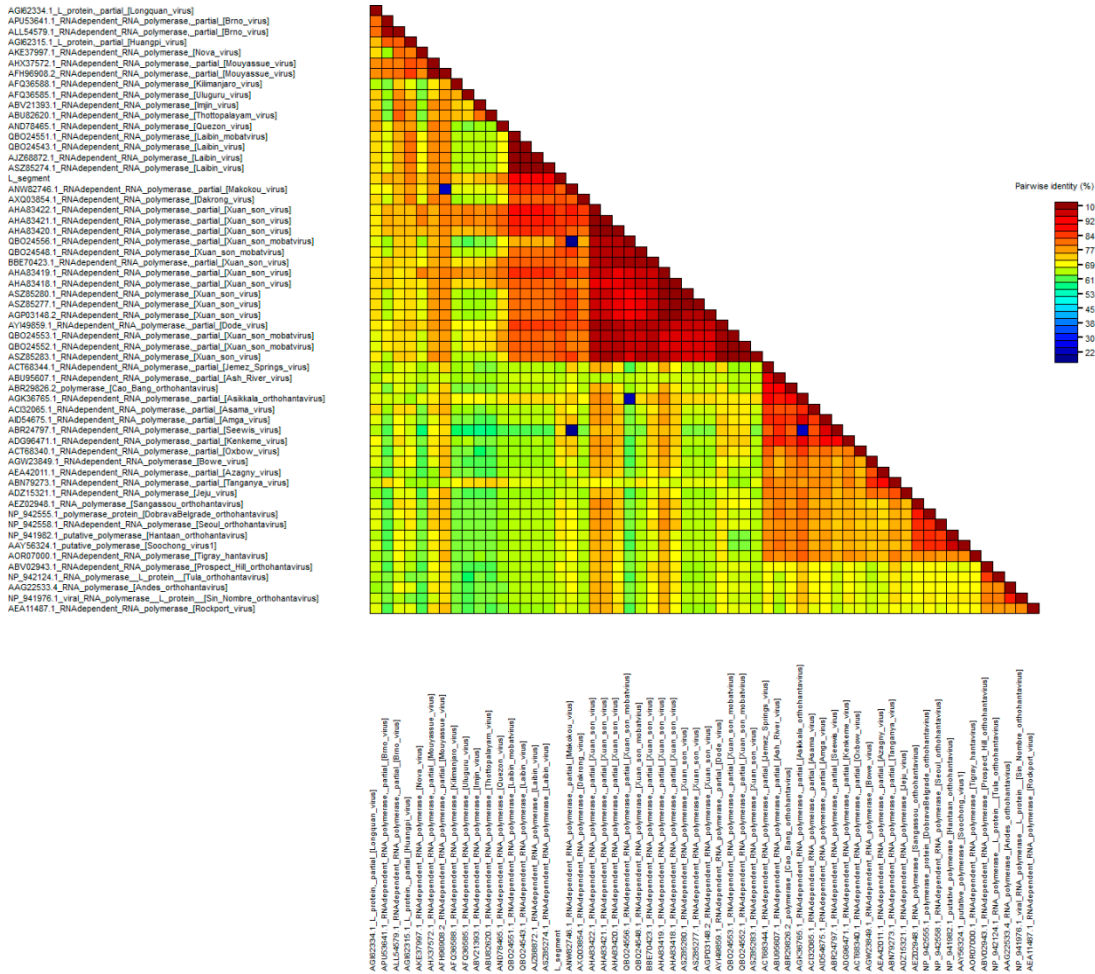


Table S2: Hantavirus accession number list used for pair-wise alignment and phylogenetic analysis

S segment:

KM102247; KY662264; MK064114; MK393932; KC688335; KF704708; KF704711; KF704712;
 KY662273; MG637438; MK393927; MK393929; MK393937; KY662267; KY662270; MG663534;
 JX473273; KX845678; JX465415; JX465422; KU950713; EF543524; EF650086; FJ593499; EF636024;
 KF974360; GQ306148; KC880342; AY526097; EF641804; JF276226; EF050455; KC631782; HQ663933;
 JX193695; JX193698; EU929072; FJ539166; HM015223; KR072621; NC_005216; AF291702; Z49098;
 NC_005227; NC_005224; NC_005233; NC_005218; AY675349; JQ082300; KU934010; NC_005236

M segment:

KM102248; KY662265; MK064115; MK393933; KU976427; KJ000539; KY662274; MG637437;
 MK393928; MK393930; MK393938; KY662268; KY662271; MG663535; KX845679; JX465402;
 KU950714; EF543526; FJ593500; EF636025; KF974359; GQ306149; KC880345; NC_010708; EF641798;
 JF276227; KC631783; HQ663934; JX193696; JX193699; EU929075; FJ539167; KR072622; NC_005215;
 AF291703; X55129; NC_005228; NC_005223; NC_005234; NC_005219; AY675353; JQ082301;
 KU934009; NC_005237; HM015219

L segment

KM102249; KY662266; MK064116; MK393934; JX912953; KF704713; KF704714; KF704715; KF704716;
KF704717; KY662275; MG637436; MK393935; MK393936; LC406451; MK393931; MK393939;
KY662269; KY662272; MG663536; JN037851; JQ287716; KJ000540; JX465369; KX845680; KR920360;
JX465388; KT316176; KU950715; EF543525; EF619961; FJ593501; EF636026; KF974361; GQ306150;
KC880348; EU001330; EF641806; JF276228; EF050454; KC631784; HQ663935; JX193697; JX193700;
EU929078; FJ593497; HM015221; KR072623; NC_005217; AF291704; EF646763; NC_005226;
NC_005225; NC_005235; NC_005222; DQ056292; JQ082302; KU934008; NC_005238

Supplementary