

Supplementary Material

Figure S1

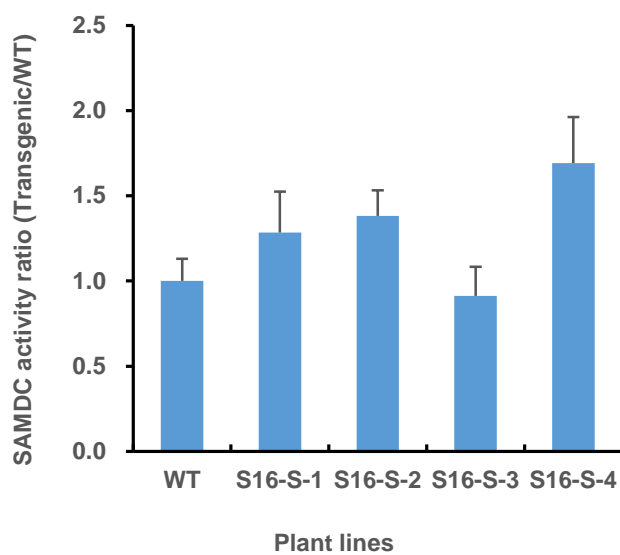


Figure S1. Comparative analysis of SAMDC activity in the leaves of transgenic progeny and wild-type plants. The 10th leaves of each plant were harvested and analyzed for enzyme activities of SAMDC. The average values and SD for four independent assays are shown.

Figure S2

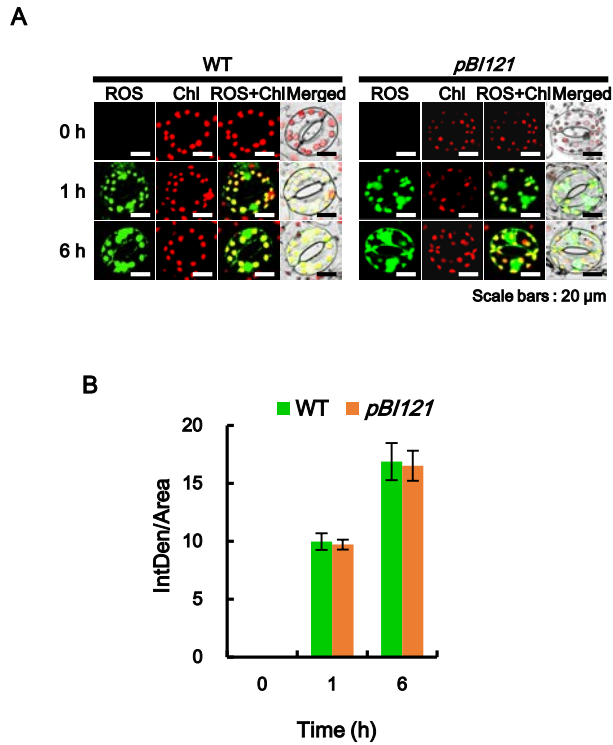


Figure S2. Kinetics of ROS production in response to salt stress in WT and *pBI121* transgenic plants. (A-B) Histochemical analysis of cellular ROS accumulation in response to salt stress with 200 mM NaCl. ROS accumulation was determined by incubation with DCFH-DA for 10 min. Staining images of leaves were obtained by confocal microscopy (A), and quantified by ImageJ software (B). The average values and SD for four independent assays are shown.