

Supplementary Materials: Achillin Increases Chemosensitivity to Paclitaxel, Overcoming Resistance and Enhancing Apoptosis in Human Hepatocellular Carcinoma Cell Line Resistant to Paclitaxel (Hep3B/PTX)

Jessica Nayelli Sanchez-Carranza, Leticia González-Maya, Rodrigo Said Razo-Hernández, Enrique Salas-Vidal, Ninfa Yaret Nolasco-Quintana, Aldo F. Clemente-Soto, Lucero García-Arizmendi, Mariana Sánchez-Ramos, Silvia Marquina and Laura Alvarez

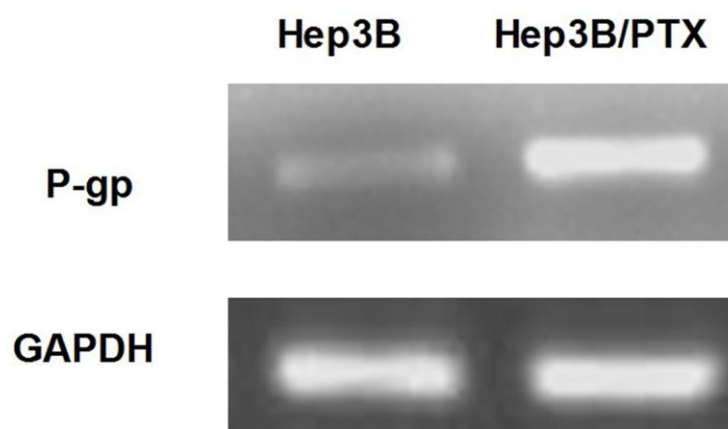


Figure S1. Analysis of mRNA levels of P-gp in Hep3B/PTX and Hep3B cells.

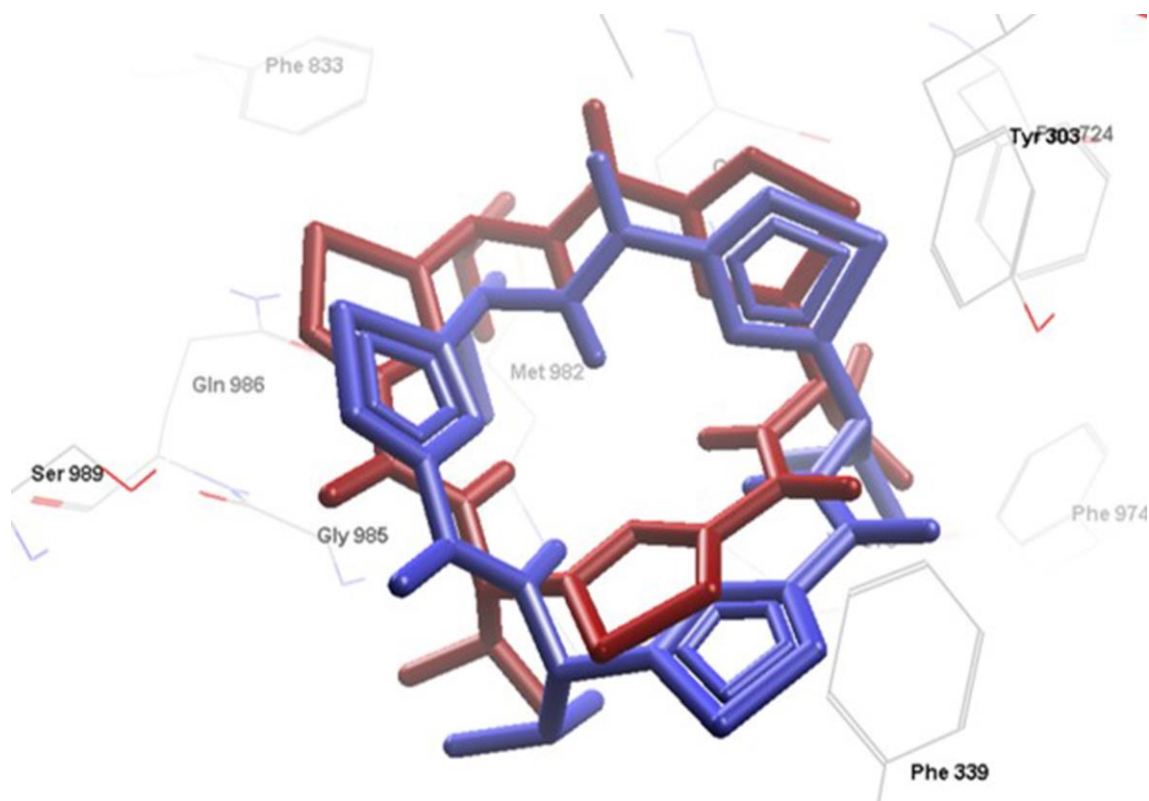


Figure S2. Structural validation of the docking calculations, using the crystal structure of mus musculus P-glycoprotein (PDB: 3G61).

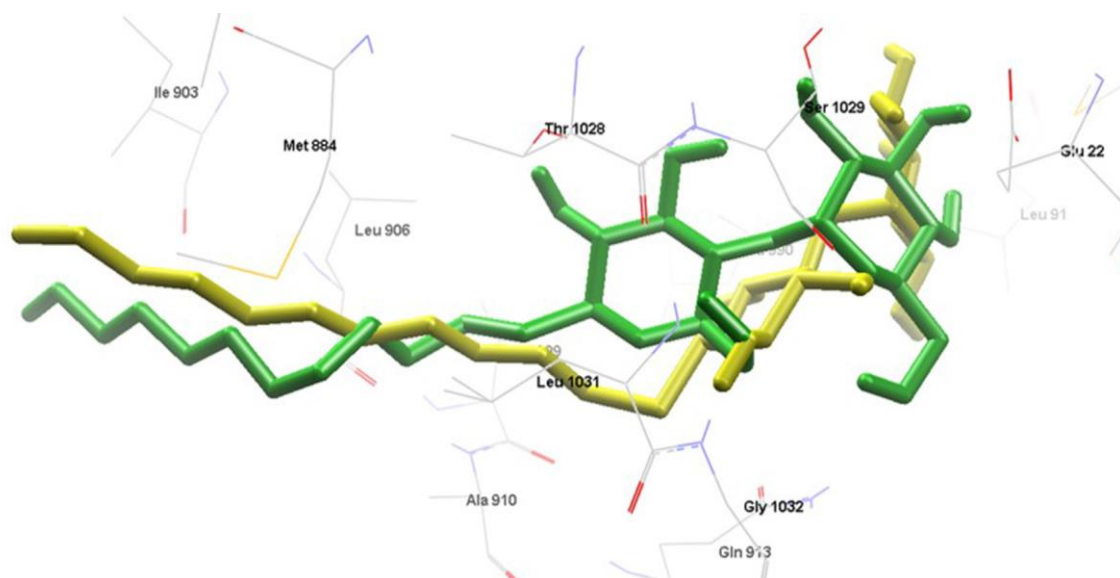
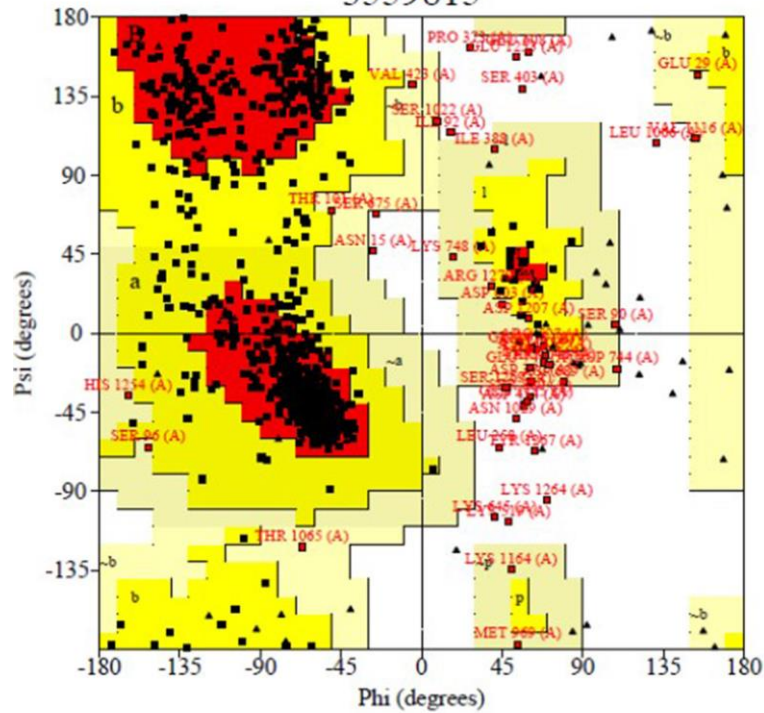


Figure S3. Structural validation of the docking calculations, using the crystal structure of Caenorhabditis elegans P-glycoprotein (PDB: 4F4C).

Ramachandran Plot

3559815



Plot statistics

Residues in most favoured regions [A.B.L]	970	84.3%
Residues in additional allowed regions [a.b.l.p]	138	12.0%
Residues in generously allowed regions [-a.-b.-l.-p]	26	2.3%
Residues in disallowed regions	17	1.5%
Number of non-glycine and non-proline residues	1151	100.0%
Number of end-residues (excl. Gly and Pro)	2	
Number of glycine residues (shown as triangles)	98	
Number of proline residues	29	
Total number of residues	1280	

Figure S4. Ramachandran plot of mP-gp homology model.

