

Supplementary Materials: Injectable Thermosensitive Formulation Based on Polyurethane Hydrogel/Mesoporous Glasses for Sustained Co-Delivery of Functional Ions and Drugs

Monica Boffito, Carlotta Pontremoli, Sonia Fiorilli, Rossella Laurano, Gianluca Ciardelli and Chiara Vitale-Brovarone

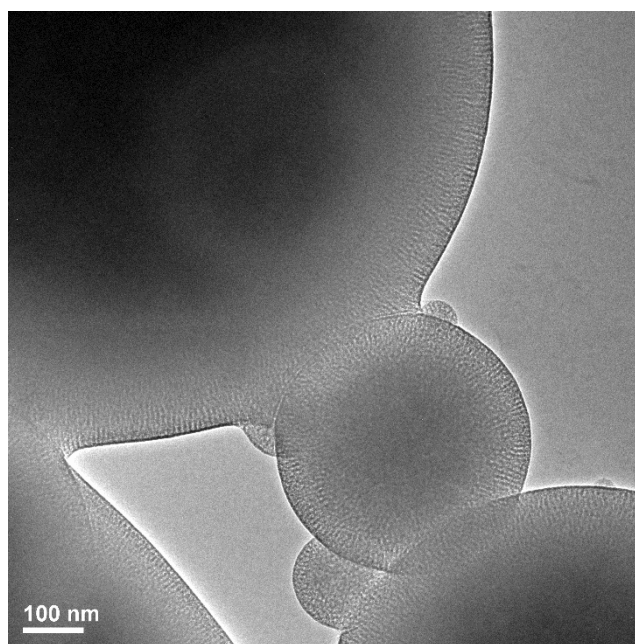


Figure S1. TEM image of MBG_Cu2%_SD.