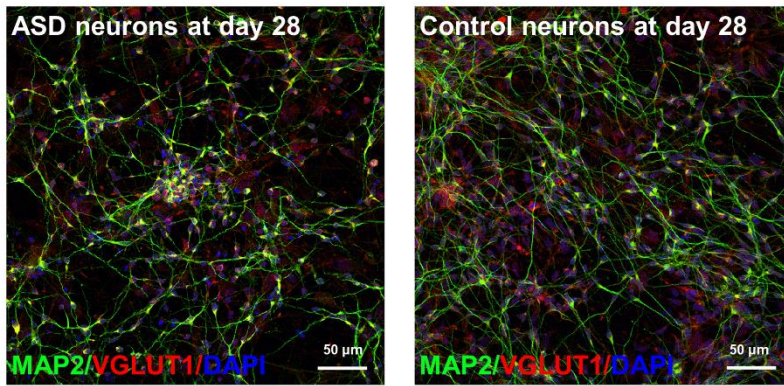
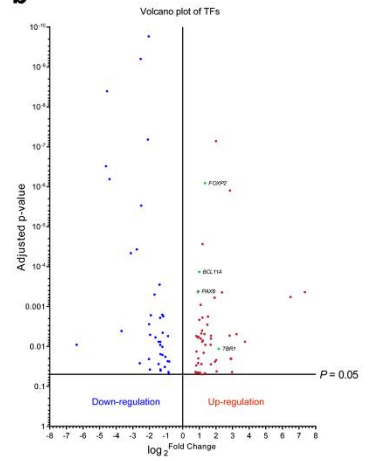


a



b



Additional file 4. Figure S2. Other characters of UiPSC-derived neurons.

Related to Figure 2

(a) Sample images of UiPSC-derived neurons on day 28. Most UiPSC-derived neurons expressed MAP2 and VGLUT1 in two groups. Scale bar, 50 μ m. (b) Volcano plots of differentially expressed TFs. The blue dots indicate downregulation, and the red dots indicate upregulation. In addition, the green dots represent major TFs involved in the network of *TBR1*.