

Title Page

Direct interaction between the hepatitis B virus core and envelope proteins analyzed in a cellular context

Authors

Florentin Pastor¹, Charline Herrscher¹, Romuald Patient¹, Sebastien Eymieux¹, Alain Moreau¹, Julien Burlaud-Gaillard², Florian Seigneuret¹, Hugues de Rocquigny^{1,*}, Philippe Roingeard^{1,2,*} and Christophe Hourieux^{1,2,*}

¹: INSERM U1259 MAVIVH – University of Tours and CHRU of Tours, Tours, France

²: Plate-Forme IBiSA des Microscopies, PPF ASB – University of Tours and CHRU of Tours, Tours, France.

To whom correspondence should be addressed:

*: hourieux@med.univ-tours.fr ; roingeard@med.univ-tours.fr; hderocquigny@univ-tours.fr

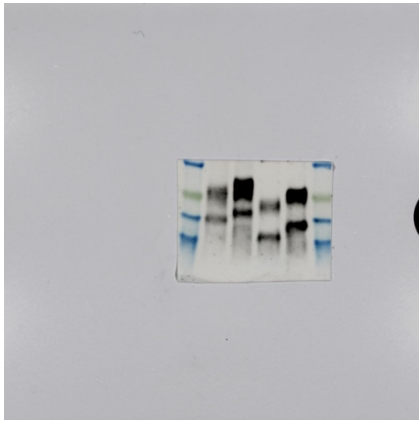
To whom it may concern:

This document provides information on the raw blots used to generate the final figures associated with the submitted manuscript. These blots are shown as raw data, according to the request of Scientific reports manuscript admin. None of these blots was recorded using multiple exposures or was manipulated using an image processing software.

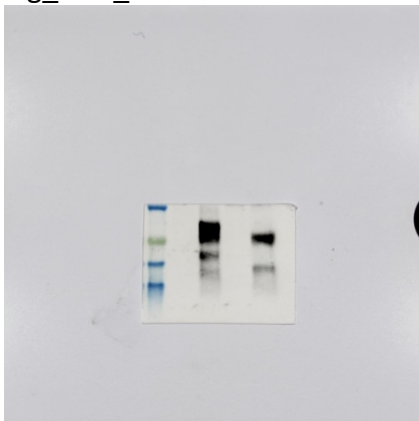
This document aims also to synthesize all the modifications needed to finalize the paper submission. For each figure, we provide:

- images of the raw blots, with its corresponding filename used for uploading ;
- a specific comment explaining modifications done to generate the final figure.

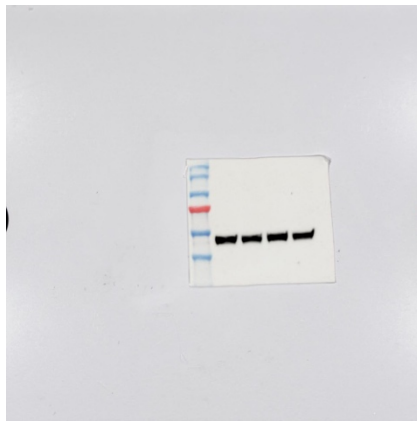
Yours sincerely,



Fig_S1.1_raw



Fig_S1.2_raw



Fig_S1.3_raw

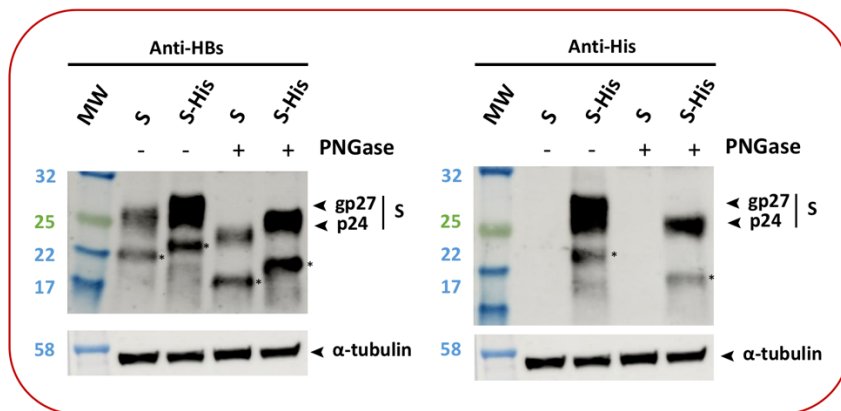
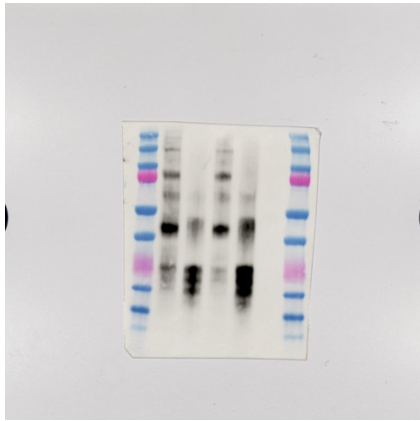
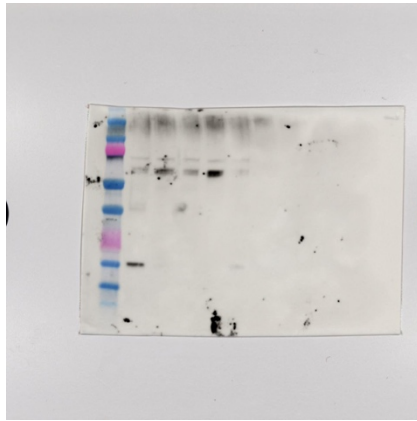


Figure S1. PNGase treatment of S and S-His proteins. Blots were cropped from raw files.



Fig_3C1_raw



Fig_3C2_raw

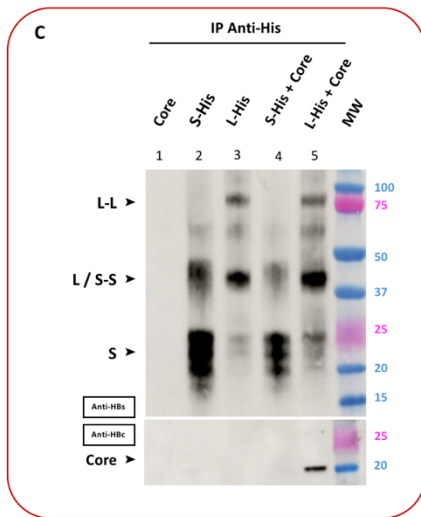
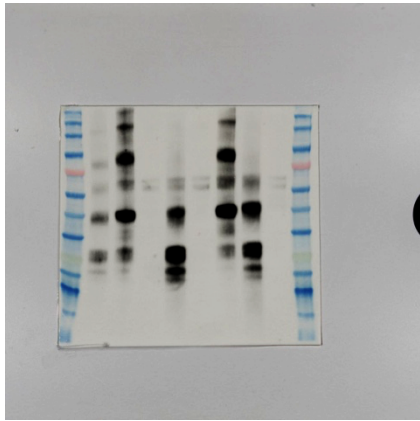
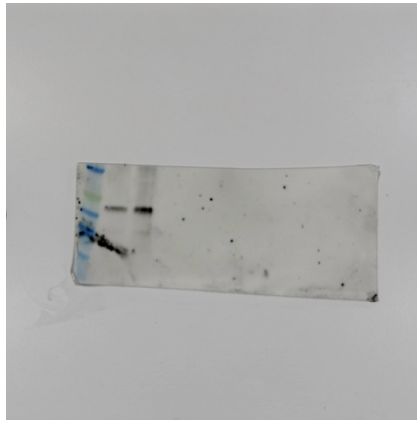


Figure 3. Only the L protein interacts with the core protein. Extra lanes and supplemental molecular weight markers were cropped. Blots were horizontally mirrored in the submitted figure.



Fig_4C1_raw



Fig_4C2_raw

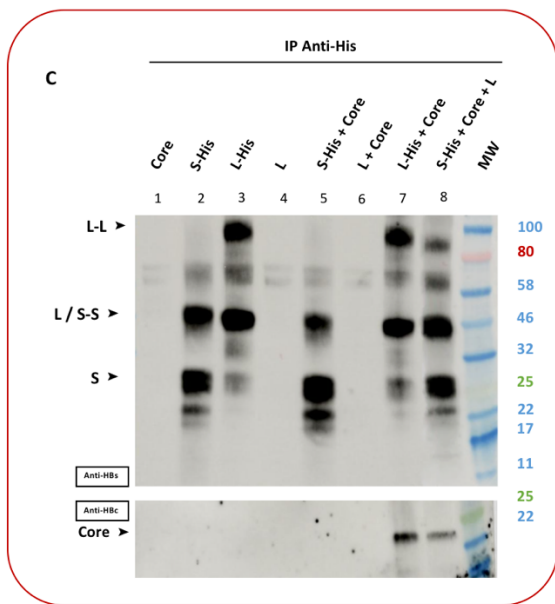
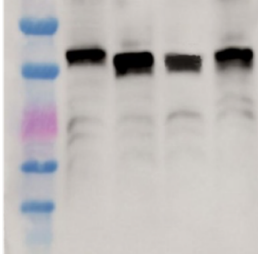
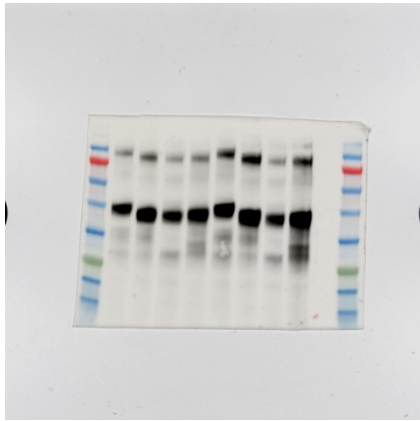


Figure 4. Tripartite interaction between the L, S and core proteins. As recommended in the digital image and integrity policies, cropped gels were replaced by the raw blot for IP and co-IP. An additional band (lane 4) is present in the new submitted figure, corresponding to a redundant control which was initially cropped. The corresponding new lanes numbers were modified in the manuscript according to the modifications introduced in this modified Figure 4. The new version was uploaded to replace the initial one.

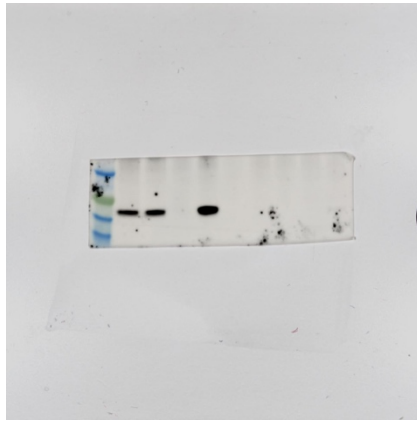


Fig_S2.1_raw

Figure S2. Expression of the mutant L proteins. Raw filenames are presented under each blot.



Fig_5C1_raw



Fig_5C2_raw

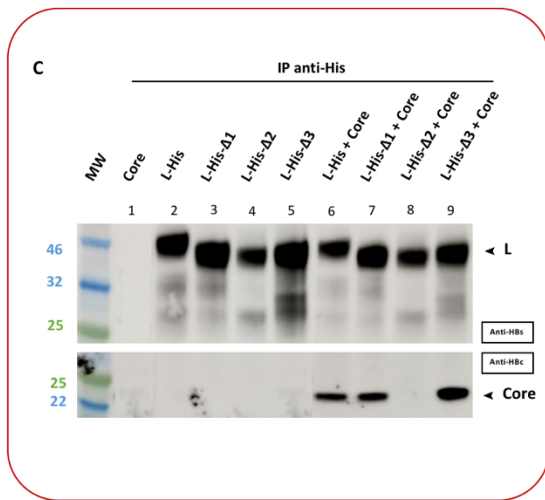
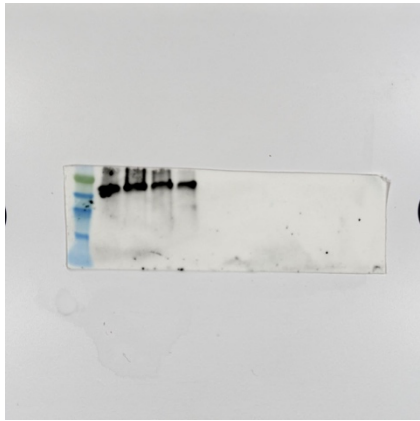
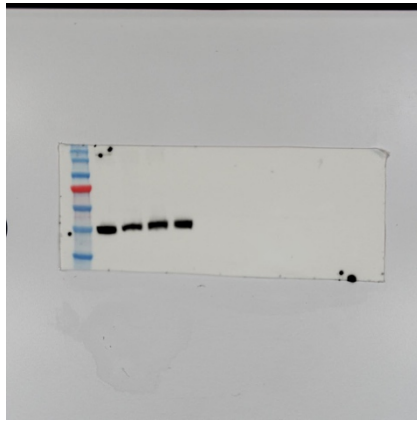


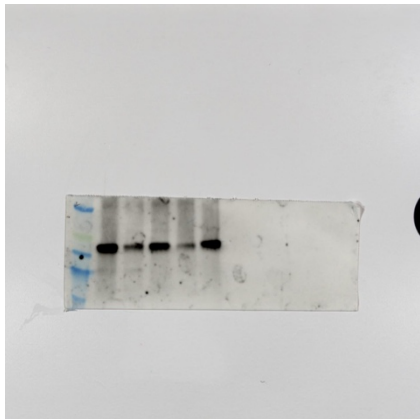
Figure 5. Interaction between the mutant L proteins and the core protein. Blots were horizontally flipped and cropped to remove dimeric proteins bands of high molecular weight (as mentioned in the manuscript) and the supplemental molecular weight markers.



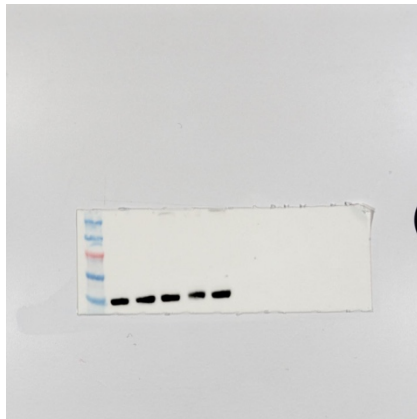
Fig_S4.1_raw



Fig_S4.2_raw



Fig_S4.3_raw



Fig_S4.4_raw

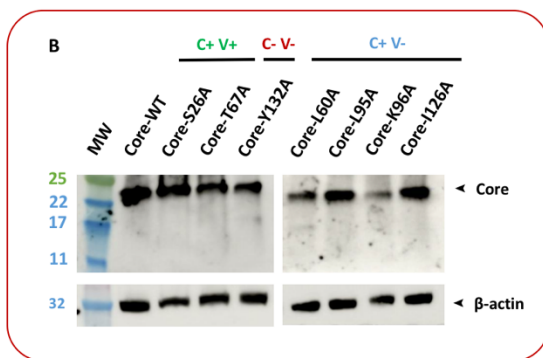


Figure S4. Expression of the MBD-mutant core proteins. Blots were cropped to remove unused gel lanes.

