

THE LANCET Oncology

Supplementary appendix

This appendix formed part of the original submission and has been peer reviewed. We post it as supplied by the authors.

Supplement to: Arnold M, Rutherford MJ, Bardot A, et al. Progress in cancer survival, mortality, and incidence in seven high-income countries 1995–2014 (ICBP SURVMARK-2): a population-based study. *Lancet Oncol* 2019; published online Sept 11. [http://dx.doi.org/10.1016/S1470-2045\(19\)30456-5](http://dx.doi.org/10.1016/S1470-2045(19)30456-5).

SUPPLEMENTARY APPENDIX:

Progress in cancer survival in seven high-income countries 1995-2014

(ICBP SURVMARK-2): a population-based study

Table of Contents

Investigator Lists.....	3
ICBP SurvMark-2 Local Leads	3
ICBP SurvMark-2 Academic Reference Group	5
ICBP Clinical Leads	5
ICBP Clinical Committee – Lung.....	5
ICBP Clinical Committee – Upper GI.....	6
ICBP Clinical Committee – Lower GI.....	6
ICBP Clinical Committee – Liver & Pancreas	7
ICBP Clinical Committee – Ovarian	7
ICBP Clinical Committee – Primary Care.....	8
ICBP Programme Board	9
Table S1. Age-standardized 1-year net survival (in %) and 95% confidence intervals by cancer site, country and period of diagnosis.....	11
Table S2. Age-standardized 1-year net survival (in %) and 95% confidence intervals by cancer site, country and period of diagnosis in patients aged <75 years	13
Table S3. Age-standardized 1-year net survival (in %) and 95% confidence intervals by cancer site, country and period of diagnosis in patients aged 75+ years	15
Table S4. Age-standardized 1-year net survival (in %) and 95% confidence intervals by cancer site, jurisdiction and period of diagnosis.....	17
Table S5. Age-standardized 5-year net survival (in %) and 95% confidence intervals by cancer site, jurisdiction and period of diagnosis.....	20
Table S6. Age-standardized 1-year net survival (in %) and 95% confidence intervals by cancer site, country and period of diagnosis, including DCO cases.....	23
Table S7. Age-standardized 5-year net survival (in %) and 95% confidence intervals by cancer site, country and period of diagnosis, including DCO cases.....	24
Figure S1. Overall flow of data, processing steps and exclusions in SURVMARK-2.....	25
Figure S2. Case distribution by cancer site, age group and country in patients diagnosed 2010-2014	26
Figure S3. Age-standardized 5-year net survival by site, country* and period of diagnosis in patients aged below 75 years diagnosed 1995-2014.....	27

Figure S4. 5-year net survival by site, country* and period of diagnosis in patients aged 75 years and above diagnosed 1995-2014	28
Figure S5. Changes in age-standardised 5-year net survival, mortality and incidence for lung cancer, by sex (comparing 2010-2014 to 1995-1999) (<i>circles=jurisdictions; triangles=countries</i>)	29
Figure S6A. Annual trends in age-standardised incidence and mortality rates and in 5-year age-standardized net survival from oesophageal cancer by country 1995-2014	30
Figure S6B. Annual trends in age-standardised incidence and mortality rates and in 5-year age-standardized net survival from stomach cancer by country 1995-2014.....	31
Figure S6C. Annual trends in age-standardised incidence and mortality rates and in 5-year age-standardized net survival from colon cancer by country 1995-2014	32
Figure S6D. Annual trends in age-standardised incidence and mortality rates and in 5-year age-standardized net survival from rectal cancer by country 1995-2014	33
Figure S6E. Annual trends in age-standardised incidence and mortality rates and in 5-year age-standardized net survival from pancreatic cancer by country 1995-2014.....	34
Figure S6F. Annual trends in age-standardised incidence and mortality rates and in 5-year age-standardized net survival from lung cancer by country 1995-2014.....	35
Figure S6G. Annual trends in age-standardised incidence and mortality rates and in 5-year age-standardized net survival from ovarian cancer by country 1995-2014.....	36

Investigator Lists

ICBP SurvMark-2 Local Leads

Al Artaman, CancerCare Manitoba, Winnipeg, Manitoba, Canada;

Alana Little, Cancer Institute NSW, Alexandria, New South Wales, Australia;

Andy Deas, Information Services Division, NHS National Services, Edinburgh, Scotland, United Kingdom;

Angela Eckstrand, Alberta Health Services, Edmonton, Alberta, Canada;

Anna Gavin, Northern Ireland Cancer Registry, Queen's University Belfast, Belfast, Northern Ireland, United Kingdom;

Bin Zhang, Government of New Brunswick, Fredericton, New Brunswick, Canada;

Bjørn Møller, Cancer Registry of Norway (Kreftregisteret), Oslo, Norway;

Carol McClure, Government of Prince Edward Island, Charlottetown, Prince Edward Island, Canada;

Ceri White, Welsh Cancer Intelligence & Surveillance Unit, Public Health Wales, Cardiff, Wales, United Kingdom;

Christine Bertrand, Government of Quebec, Montreal, Quebec, Canada;

Christopher Jackson, Cancer Society of New Zealand, Wellington, New Zealand;

Cindy Stock, BC Cancer, Vancouver, British Columbia, Canada;

Claire Austin, Ministry of Health, New Zealand;

David Gavin, The BC Cancer Research Centre, Vancouver, British Columbia, Canada;

David H Brewster, Centre for Population Health Sciences, Edinburgh University, Edinburgh, Scotland, United Kingdom;

David S Morrison, Scottish Cancer Registry, University of Glasgow, Scotland;

David Ransom, Department of Health, Perth, Western Australia, Australia;

Deirdre Fitzpatrick, Northern Ireland Cancer Registry, Queen's University Belfast, Belfast, Northern Ireland, United Kingdom;

Donna Turner, CancerCare Manitoba, Winnipeg, Manitoba, Canada;

Dyfed Huws, Welsh Cancer Intelligence & Surveillance Unit, Public Health Wales, Cardiff, Wales, United Kingdom;

Eshwar Kumar, Government of New Brunswick, Fredericton, New Brunswick, Canada;

Farah McCrate, Eastern Health, St. John's, Newfoundland and Labrador, Canada;

Gail Noonan, CancerCare Manitoba, Winnipeg, Manitoba, Canada;

Geoff Porter, Canadian Partnership Against Cancer, Toronto, Ontario, Canada;

Gerda Engholm, The Danish Cancer Society (Kræftens Bekæmpelse), Copenhagen, Denmark;

Gina Lockwood, Canadian Partnership Against Cancer, Toronto, Ontario, Canada;

Grace Musto, CancerCare Manitoba, Winnipeg, Manitoba, Canada;

Grlica Bolesnikov, Government of New Brunswick, Fredericton, New Brunswick, Canada;

Guillaume Ruel, Government of Quebec, Montreal, Quebec, Canada;

Hanna Tervonen, Cancer Institute NSW, Alexandria, New South Wales, Australia;

Hazem Abd Elkader, Cancer Society of New Zealand, Wellington, New Zealand;

Heather Stuart-Panko, Saskatchewan Cancer Agency, Regina, Saskatchewan, Canada;

Helen Farrugia, Cancer Council Victoria, Melbourne, Victoria, Australia;

Janet Warlow, Welsh Cancer Intelligence & Surveillance Unit, Public Health Wales, Cardiff, Wales, United Kingdom;

Jason Poole, Public Health England, London, England, United Kingdom;

Jes Søgaaard, The Danish Cancer Society (Kræftens Bekæmpelse), Copenhagen, Denmark;

Jingyu Bu, Alberta Health Services, Edmonton, Alberta, Canada;

John Dowling, Department of Health, Perth, Western Australia, Australia;

John Spinelli, The BC Cancer Research Centre, Vancouver, British Columbia, Canada;

Kim Vriends, Government of Prince Edward Island, Charlottetown, Prince Edward Island, Canada;

Lorraine Shack, Alberta Health Services, Edmonton, Alberta, Canada;

Louise Sandford, Cancer Society of New Zealand, Wellington, New Zealand;

Marianne Brenn Jerm, Cancer Registry of Norway (Kreftregisteret), Oslo, Norway

Mary Jane King, Cancer Care Ontario, Toronto, Ontario, Canada;

Maureen MacIntyre, Nova Scotia Health Authority Cancer Care Program, Halifax, Nova Scotia, Canada;

Nathalie St-Jacques, Nova Scotia Health Authority Cancer Care Program, Halifax, Nova Scotia, Canada;

Nicole Mittmann, Cancer Care Ontario, Toronto, Ontario, Canada;

Paul Walsh, National Cancer Registry Ireland, Cork, Ireland;

Prithwish De, Cancer Care Ontario, Toronto, Ontario, Canada;

Raman Agnihotram, McGill University Health Centre, Montreal, Quebec, Canada;

Richard Walton, Cancer Institute NSW, Alexandria, New South Wales, Australia;

Richard Trevithick, Department of Health, Perth, Western Australia, Australia;

Rory Carle, Department of Health, Perth, Western Australia, Australia;

Ryan Woods, BC Cancer, Vancouver, British Columbia, Canada;

Sally Vernon, Public Health England, London, England, United Kingdom;

Serena Kozie, Saskatchewan Cancer Agency, Regina, Saskatchewan, Canada;
Susan Ryan, Eastern Health, St. John's, Newfoundland and Labrador, Canada;
Suzanne Leonfellner, Government of New Brunswick, Fredericton, New Brunswick, Canada;
Vicky Thursfield, Cancer Council Victoria, Melbourne, Victoria, Australia;

ICBP SurvMark-2 Academic Reference Group

Diana Sarfati, University of Otago, Dunedin, New Zealand;
Dianne O'Connell, Cancer Council New South Wales, Sydney, New South Wales, Australia;
Michael Eden, Public Health England, London, United Kingdom;
Sabine Siesling, the Netherlands Comprehensive Cancer Organisation (IKNL), Utrecht, The Netherlands and University of Twente, Enschede, The Netherlands.

ICBP Clinical Leads

Allan Spiegelman, UNSW St Vincent's Hospital Clinical School, Sydney, Australia;
Christian Finley, McMaster University, Toronto, Ontario, Canada;
John Butler, The Royal Marsden NHS Foundation Trust, London, United Kingdom;
Naureen Starling, The Royal Marsden NHS Foundation Trust, London, United Kingdom;
Piers Gatenby, Royal Surrey County Hospital Foundation Trust, Guildford, United Kingdom;

ICBP Clinical Committee – Lung

Anur Guhan, The Ayr Hospital, Scotland, United Kingdom;
Christian Finley, McMaster University, Canadian Association of Thoracic Surgeons, Canada;
Brian McCaughan, University of Sydney, Australia;
David Baldwin, University of Nottingham, United Kingdom;
Erik Jakobsen, Odense University Hospital, Denmark;
Ian Williamson, Aneurin Bevan University Hospital, Wales, United Kingdom;
Jason Lester, Velindre Cancer Centre, Wales, United Kingdom;
Jonathan McAleese, Belfast City Hospital, Northern Ireland, United Kingdom;
Karl Kolbeck, Karolinska University Hospital, Sweden;

Mick Peake, Public Health England, United Kingdom;

Odd Terje Brustugun, Oslo University Hospital, Norway;

Paul Dawkins, Middlemore Hospital, New Zealand;

Wendy Anderson, Northern Health and Social Care Trust, Northern Ireland, United Kingdom;

ICBP Clinical Committee – Upper GI

Alan Christie, Edinburgh Cancer Centre, Scotland, United Kingdom;

Andrew Kennedy, Association of Laparoscopic Surgeons, Ireland;

Ashley Roberts, Cardiff & Vale University Health Board, Wales, United Kingdom;

Asif Chaudry, The Royal Marsden, London, United Kingdom;

Carys Morgan, Velindre Cancer Centre, Wales, United Kingdom;

Christian Finley, McMaster University, Canada;

David Ransom, Fiona Stanley Hospital, Western Australia;

Geoff Porter, Dalhousie University, Nova Scotia, Canada;

John Reynolds, St James Hospital and Trinity College, Dublin, Ireland;

John Windsor, University of Auckland and Auckland City Hospital, New Zealand;

John Zalberg, School of Public Health and Preventive Medicine at Monash University, Australia;

Natalie Coburn, Odette Cancer Centre, Canada;

Naureen Starling, The Royal Marsden, London, United Kingdom;

Neil Merrett, University of Western Sydney and South Western Sydney Local Health District, Australia;

Paulose George, Wrexham Maelor Hospital, Wales, United Kingdom;

Piers Gatenby, Royal Surrey County Hospital, Surrey, United Kingdom;

Tom Crosby, Velindre Cancer Centre and South Wales Cancer Network, Wales, United Kingdom;

Wyn Lewis, Cardiff and Vale University Health Board, Wales, United Kingdom;

ICBP Clinical Committee – Lower GI

Allan Spigelman, St Vincent's Hospital Clinical School, Sydney, Australia;

Annika Sjovall, Karolinska University Hospital, Sweden;

Christopher Booth, Queen's University, Kingston, Canada

Cindy Chew, Hairmyres University Hospital and University of Glasgow, Scotland, United Kingdom;

Geoff Porter, Dalhousie University, Nova Scotia, Canada;
Jason Park, St Boniface General Hospital and CancerCare Manitoba, Manitoba, Canada;
John Butler, The Royal Marsden, London, United Kingdom;
Marcia Hall, Mount Vernon Cancer Centre, Rickmansworth, United Kingdom;
Marianne Gronlie Guren, Oslo University Hospital, Norway;
Mark Robinson, Aneurin Bevan University Health Board, Wales, United Kingdom;
Mary Theophilus, Royal Perth Hospital, SJG Midland Public and Private Hospitals, Australia;
Nancy Baxter, St Michael's Hospital and University of Toronto, Canada;
Paulose George, Wrexham Maelor Hospital, Wales, United Kingdom;
Rachel Hargest, University Hospital of Wales, Wales, United Kingdom;
Richard Adams, Cardiff University and Velindre Cancer Centre, Wales, United Kingdom;
Robert Bleehen, Cardiff & Vale University Health Board, Wales, United Kingdom;
Winson Cheung, British Columbia Cancer Agency and University of British Columbia, Canada;

ICBP Clinical Committee – Liver & Pancreas

Alan Christie, Edinburgh Cancer Centre, Scotland, United Kingdom;
Cindy Chew, Hairmyres University Hospital and University of Glasgow, Scotland, United Kingdom;
Elijah Dixon, University of Calgary, Canada;
Geoff Porter, Dalhousie University, Nova Scotia, Canada;
John Butler, The Royal Marsden, London, United Kingdom;
Justin Geoghegan, St Vincent's Private Hospital, Ireland;
Keith Roberts, University Hospitals Birmingham NHS Foundation Trust and University of Birmingham, United Kingdom;
Kristoffer Lassen, Oslo University Hospital, Sweden;
Nagappan Kumar, Cardiff & Vale University Health Board, Wales, United Kingdom;
Natalie Coburn, Odette Cancer Centre, Canada;
Naureen Starling, The Royal Marsden, London, United Kingdom;
Neil Merrett, South Western Sydney Local Health District, Australia;

ICBP Clinical Committee – Ovarian

*(*also Module 7 committee members)*

Alon Altman*, University of Manitoba, Canada;

Andy Nordin, East Kent Gynaecological Oncology Centre, Kent, United Kingdom;

Charlie Gourley, The University of Edinburgh, Scotland, United Kingdom

Claus Hoegdall*, University of Copenhagen, Denmark;

Dearbhaile O'Donnell, St James Hospital, Dublin, Ireland;

Gregg Nelson*, Tom Baker Oncology Centre, Alberta, Canada

Gunnar Kristensen, Norwegian Radium Hospital, Norway;

Iain McNeish, Beatson West of Scotland Cancer Centre and University of Glasgow, Scotland, UK;

James Bentley*, Dalhousie University, Nova Scotia, Canada;

Jason Tan, Western Australia Cancer & Palliative Care Network, Australia;

John Butler, The Royal Marsden, London, United Kingdom;

John Price, Belfast Trust, Northern Ireland, United Kingdom

Louise Hanna, Velindre Cancer Centre, Cardiff, Wales, United Kingdom;

Marcia Hall, Mount Vernon Cancer Centre, Rickmansworth, United Kingdom;

Michael Fung Kee Fung, Ottawa Regional Cancer Programme & Ottawa Hospital, Canada;

Neville Hacker, Royal Hospital for Women and South Western Sydney Local Health District, Australia;

Orla McNally*, Royal Women's Hospital, Melbourne, Australia;

Pernille Jensen, Odense University Hospital, Denmark;

Peter Sykes, University of Otago, Christchurch, New Zealand;

Robert Bleehen, Cardiff & Vale University Health Board, Wales, UK;

Russell Hogg*, The University of Sydney, Australia;

Scott Fegan, Royal Infirmary of Edinburgh, Scotland, United Kingdom;

ICBP Clinical Committee – Primary Care

Anat Jani, Nuffield Department of Primary Care Health Sciences, Oxford, United Kingdom;

Brian Nicholson, Nuffield Department of Primary Care Health Sciences, Oxford, United Kingdom;

Clifford Jones, All Wales GP Lead, South Wales Valleys, Wales, United Kingdom;

David Weller, University of Edinburgh, Scotland, United Kingdom;

Fiona Walter, University of Cambridge, Cambridge, United Kingdom;

Hans Thulesius, Lund University, Sweden;

Jon Emery, University of Melbourne and Western Health, Australia;

Ken O'Neill, West of Scotland Primary Care Cancer Group, Glasgow, Scotland, UK;

Lance Saker, Camden Clinical Commissioning Group, London, United Kingdom;

Peter Vedsted, Aarhus University, Denmark;

Richard Neal, Leeds University, Leeds, United Kingdom;

Richard Roope, Royal College of General Practitioners and Cancer Research UK, London, UK;

Ross Lawrenson, University of Waikato, New Zealand;

Susanna Hill, University of Exeter Medical School, Exeter, United Kingdom;

Yoryos Lyratzopoulos, University College London, London, United Kingdom;

ICBP Clinical Committee – Diagnostics & Pathology:

Cindy Chew, Hairmyres University Hospital and University of Glasgow, Scotland, United Kingdom;

John Srigley, Trillium Health Partners, Ontario, Canada;

Kate Gower-Thomas, Cwn Taf Health Board, Wales, United Kingdom;

Mark Robinson, Aneurin Bevan University Health Board, Wales, United Kingdom;

Michael Eden, Cambridge University Hospitals NHS Trust, Cambridge, United Kingdom;

Robert Bleehen, Cardiff & Vale University Health Board, Wales, United Kingdom;

Shahid Rasul, NHS Ayrshire & Arran, Scotland, United Kingdom;

ICBP Programme Board

Aileen Keel, Scottish Government, Edinburgh, Scotland, UK;

Anna Gavin, Queen's University Belfast, Belfast, Northern Ireland, United Kingdom;

David Fitzgerald, National Cancer Programme Director, NHS England, England, United Kingdom;

Christopher Jackson, Cancer Society of New Zealand, Wellington, New Zealand;

Conan Donnelly, National Cancer Registry Ireland, Cork, Ireland;

David Currow, Cancer Institute New South Wales, Sydney, New South Wales, Australia;

David Ransom, Department of Health, Western Australia, Perth, Western Australia, Australia;

Gareth Davies, Wales Cancer Network, Cardiff, Wales, United Kingdom;

Geoff Porter, Canadian Partnership Against Cancer, Toronto, Ontario, Canada;

Heather Bryant, Canadian Partnership Against Cancer, Toronto, Ontario, Canada;

Linda Aagaard Thomsen, Danish Cancer Society, Copenhagen, Denmark;
Kathryn Whitfield, Department of Human Services, Melbourne, Victoria, Australia;
Mike Kernaghan, Cancer Society of New Zealand, Wellington, New Zealand;
Nicole Mittmann, Cancer Care Ontario, Toronto, Ontario, Canada;
Ole Alexander Opdalshei, Norwegian Cancer Society, Oslo, Norway;
Robert Thomas, University of Melbourne, Melbourne, Victoria, Australia;
Sara Hiom, Cancer Research UK, England, United Kingdom;
Violet Platt, Department of Health, Western Australia, Perth, Western Australia, Australia;

Table S1. Age-standardized 1-year net survival (in %) and 95% confidence intervals by cancer site, country and period of diagnosis

	Australia [†]		Canada [‡]		Denmark		Ireland [§]		New Zealand		Norway		UK	
Oesophagus														
1995-1999	42.6	(40.8-44.4)	38.4	(36.9-39.8)	27.1	(24.7-29.4)	30.8	(28.3-33.3)	29.5	(26.3-32.7)	27.9	(24.6-31.3)	29.8	(29.3-30.4)
2000-2004	43.7	(42.0-45.4)	39.7	(38.3-41.1)	29.6	(27.4-31.8)	36.6	(34.1-39.1)	35.0	(31.9-38.1)	33.5	(30.1-36.9)	36.5	(35.9-37.0)
2005-2009	47.5	(45.9-49.2)	40.7	(39.4-42.0)	33.6	(31.4-35.9)	43.5	(41.1-45.8)	40.1	(37.1-43.0)	41.0	(37.8-44.3)	41.4	(40.8-41.9)
2010-2014	52.0	(49.7-54.2)	43.5	(42.0-45.0)	44.4	(41.4-47.4)	49.9	(46.6-53.2)	44.1	(40.8-47.3)	47.3	(43.8-50.6)	46.4	(45.8-47.0)
abs change*	9.4		5.1		17.3		19.1		14.6		19.4		16.6	
Stomach														
1995-1999	50.5	(49.2-51.7)	45.1	(44.1-46.1)	36.6	(34.6-38.5)	33.3	(31.3-35.4)	40.0	(37.8-42.3)	42.7	(40.8-44.7)	34.7	(34.2-35.2)
2000-2004	52.9	(51.6-54.1)	47.2	(46.2-48.2)	37.7	(35.7-39.7)	38.3	(36.2-40.5)	42.4	(40.1-44.7)	47.3	(45.2-49.3)	39.3	(38.7-39.8)
2005-2009	55.3	(54.0-56.5)	49.4	(48.4-50.4)	43.6	(41.6-45.5)	47.2	(45.1-49.3)	45.9	(43.5-48.2)	50.9	(48.8-53.1)	43.5	(42.9-44.0)
2010-2014	59.4	(57.7-61.0)	52.6	(51.4-53.8)	52.5	(50.1-54.9)	52.3	(49.5-55.0)	49.0	(46.2-51.7)	53.5	(50.9-56.0)	46.8	(46.1-47.5)
abs change*	8.9		7.5		15.9		19.0		9.0		10.8		12.1	
Colon														
1995-1999	78.9	(78.4-79.4)	77.6	(77.2-78.0)	70.9	(69.9-71.8)	70.9	(69.7-72.1)	76.4	(75.4-77.3)	76.3	(75.4-77.2)	67.6	(67.4-67.9)
2000-2004	81.8	(81.4-82.3)	80.3	(80.0-80.7)	72.9	(72.0-73.8)	72.2	(71.0-73.3)	78.2	(77.2-79.0)	77.3	(76.5-78.2)	71.0	(70.7-71.2)
2005-2009	84.6	(84.2-85.0)	82.6	(82.3-83.0)	75.9	(75.1-76.7)	78.3	(77.3-79.2)	79.1	(78.3-80.0)	80.1	(79.3-80.9)	74.0	(73.8-74.3)
2010-2014	87.0	(86.5-87.5)	83.4	(83.0-83.8)	82.8	(82.0-83.6)	80.8	(79.5-82.0)	80.8	(79.9-81.8)	82.6	(81.8-83.4)	77.0	(76.7-77.3)
abs change*	8.1		5.8		11.9		9.9		4.4		6.3		9.4	
Rectum														
1995-1999	82.6	(81.7-83.4)	83.2	(82.5-83.9)	75.6	(74.3-76.8)	73.5	(71.6-75.3)	79.6	(77.9-81.1)	81.1	(79.8-82.3)	73.0	(72.6-73.4)
2000-2004	85.8	(85.1-86.5)	84.8	(84.2-85.4)	79.1	(77.9-80.2)	75.9	(74.1-77.5)	82.5	(81.0-83.9)	82.7	(81.6-83.8)	77.3	(76.9-77.7)
2005-2009	87.9	(87.3-88.5)	86.3	(85.7-86.8)	82.6	(81.6-83.6)	81.6	(80.1-83.0)	83.9	(82.5-85.1)	86.0	(85.0-87.0)	80.5	(80.2-80.9)
2010-2014	89.6	(88.7-90.4)	86.6	(85.9-87.2)	87.6	(86.6-88.5)	86.7	(84.7-88.4)	85.9	(84.5-87.3)	89.1	(88.0-90.2)	84.8	(84.4-85.2)
abs change*	7.0		3.4		12.0		13.2		6.3		8.0		11.8	
Pancreas														
1995-1999	21.4	(20.2-22.6)	20.1	(19.3-21.0)	14.4	(13.1-15.8)	13.7	(11.8-15.6)	19.5	(17.4-21.6)	15.9	(14.3-17.5)	13.7	(13.3-14.2)
2000-2004	26.6	(25.4-27.7)	23.7	(22.9-24.6)	17.5	(16.3-18.9)	17.6	(15.7-19.7)	19.2	(17.2-21.3)	18.9	(17.3-20.5)	16.5	(16.1-17.0)
2005-2009	29.9	(28.8-30.9)	26.6	(25.8-27.4)	21.9	(20.5-23.2)	23.1	(21.2-25.1)	20.4	(18.6-22.3)	25.5	(23.8-27.2)	21.2	(20.7-21.6)
2010-2014	40.1	(38.6-41.5)	31.4	(30.5-32.3)	31.1	(29.3-32.8)	31.4	(28.4-34.4)	24.8	(22.7-27.0)	30.5	(28.5-32.4)	26.3	(25.7-26.8)
abs change*	18.7		11.3		16.7		17.7		5.3		14.6		12.6	
Lung														
1995-1999	37.8	(37.2-38.5)	38.3	(37.9-38.7)	27.5	(26.7-28.2)	25.5	(24.4-26.6)	30.7	(29.5-31.8)	31.6	(30.6-32.6)	24.2	(23.9-24.4)
2000-2004	40.5	(39.9-41.1)	39.9	(39.5-40.3)	33.4	(32.7-34.2)	28.2	(27.2-29.3)	31.7	(30.7-32.8)	33.7	(32.7-34.6)	28.0	(27.7-28.2)
2005-2009	43.8	(43.2-44.4)	42.3	(41.9-42.7)	36.4	(35.7-37.2)	34.5	(33.4-35.5)	33.2	(32.2-34.3)	40.3	(39.4-41.3)	31.5	(31.3-31.8)
2010-2014	48.9	(48.1-49.7)	47.0	(46.5-47.4)	46.2	(45.3-47.2)	45.2	(43.8-46.6)	39.9	(38.6-41.1)	46.7	(45.6-47.8)	38.9	(38.6-39.2)
abs change*	11.1		8.7		18.7		19.7		9.2		15.1		14.7	
Ovary														
1995-1999	70.3	(68.8-71.8)	70.0	(68.9-71.0)	63.7	(61.8-65.6)	56.2	(53.4-58.9)	60.7	(57.8-63.6)	70.6	(68.6-72.6)	55.5	(54.9-56.1)
2000-2004	72.9	(71.4-74.3)	71.8	(70.8-72.8)	68.7	(66.8-70.5)	59.5	(56.8-62.1)	63.7	(60.8-66.5)	75.2	(73.3-77.0)	59.9	(59.4-60.5)
2005-2009	75.1	(73.8-76.4)	72.9	(72.0-73.9)	72.6	(70.8-74.3)	63.8	(61.2-66.2)	65.0	(62.4-67.6)	75.9	(74.1-77.7)	64.4	(63.8-64.9)
2010-2014	78.5	(76.7-80.1)	72.6	(71.4-73.7)	77.4	(75.3-79.3)	69.5	(66.1-72.6)	71.5	(68.5-74.4)	77.5	(75.2-79.7)	70.3	(69.6-70.9)

abs change*	8.2	2.6	13.7	13.3	10.8	6.9	14.8
-------------	-----	-----	------	------	------	-----	------

* Absolute change between 1995-1999 and 2010-2014

† Australia includes New South Wales (1995-2012), Victoria and Western Australia

‡ Canada includes Alberta, British Columbia, Manitoba, New Brunswick, Nova Scotia, Ontario, Prince Edward Island and Saskatchewan

¶ Ireland (1995-2013)

Table S2. Age-standardized 1-year net survival (in %) and 95% confidence intervals by cancer site, country and period of diagnosis in patients aged <75 years

	Australia [†]		Canada [‡]		Denmark		Ireland [§]		New Zealand		Norway		UK	
Oesophagus														
1995-1999	47.5	(45.2-49.8)	42.3	(40.5-44.1)	29.7	(26.8-32.7)	35.6	(32.4-38.9)	32.5	(28.4-36.7)	30.7	(26.5-35.0)	34.6	(33.9-35.3)
2000-2004	48.1	(45.9-50.2)	44.1	(42.4-45.8)	33.2	(30.5-36.0)	42.3	(39.1-45.5)	40.4	(36.2-44.5)	37.6	(33.2-42.0)	42.0	(41.3-42.7)
2005-2009	52.4	(50.2-54.4)	44.7	(43.0-46.3)	38.7	(36.0-41.5)	49.7	(46.6-52.6)	44.9	(41.0-48.7)	46.5	(42.4-50.5)	47.1	(46.4-47.9)
2010-2014	56.5	(53.6-59.4)	48.5	(46.6-50.3)	49.2	(45.3-53.0)	57.2	(53.0-61.1)	48.9	(44.6-53.1)	53.3	(49.0-57.3)	52.4	(51.6-53.2)
abs change*	9.0		6.2		19.5		21.6		16.4		22.6		17.8	
Stomach														
1995-1999	55.6	(54.0-57.1)	48.7	(47.4-50.0)	39.9	(37.4-42.4)	37.0	(34.5-39.6)	44.0	(41.0-46.8)	46.3	(43.7-48.8)	39.8	(39.2-40.4)
2000-2004	57.8	(56.2-59.3)	51.7	(50.4-52.9)	41.9	(39.4-44.4)	43.6	(40.9-46.3)	47.9	(44.9-50.8)	52.4	(49.7-55.0)	44.6	(43.9-45.3)
2005-2009	60.0	(58.4-61.5)	53.3	(52.0-54.5)	48.6	(46.2-51.0)	53.7	(51.1-56.3)	49.8	(46.8-52.7)	56.8	(54.0-59.5)	49.1	(48.3-49.8)
2010-2014	65.3	(63.3-67.3)	57.1	(55.6-58.6)	58.3	(55.3-61.0)	57.9	(54.4-61.3)	55.3	(51.8-58.6)	58.5	(55.3-61.6)	51.6	(50.6-52.5)
abs change*	9.7		8.4		18.4		20.9		11.3		12.2		11.8	
Colon														
1995-1999	82.4	(81.8-83.0)	80.6	(80.1-81.1)	74.3	(73.1-75.4)	76.0	(74.6-77.4)	78.5	(77.4-79.6)	79.8	(78.6-80.9)	73.5	(73.1-73.9)
2000-2004	85.5	(84.9-86.0)	83.8	(83.3-84.2)	77.8	(76.7-78.9)	77.4	(76.1-78.7)	80.8	(79.7-81.8)	81.6	(80.5-82.6)	76.6	(76.3-76.9)
2005-2009	88.3	(87.8-88.8)	86.6	(86.2-87.0)	81.0	(80.1-82.0)	84.0	(82.9-85.1)	82.4	(81.3-83.4)	83.5	(82.5-84.5)	79.5	(79.2-79.8)
2010-2014	90.4	(89.8-91.0)	87.5	(87.1-88.0)	86.7	(85.8-87.6)	86.0	(84.5-87.3)	84.3	(83.1-85.4)	86.6	(85.6-87.5)	82.8	(82.4-83.1)
abs change*	8.0		6.9		12.4		10.0		5.8		6.8		9.3	
Rectum														
1995-1999	86.3	(85.4-87.2)	86.6	(85.8-87.3)	80.1	(78.6-81.5)	77.6	(75.5-79.6)	82.6	(80.8-84.3)	84.8	(83.3-86.2)	79.2	(78.7-79.7)
2000-2004	89.8	(89.1-90.5)	88.2	(87.6-88.9)	83.7	(82.4-85.0)	83.2	(81.4-84.8)	86.1	(84.5-87.6)	87.0	(85.7-88.2)	83.2	(82.8-83.7)
2005-2009	91.8	(91.1-92.4)	90.0	(89.5-90.6)	87.8	(86.8-88.8)	88.4	(86.8-89.7)	87.6	(86.1-88.9)	91.0	(89.8-92.0)	85.9	(85.5-86.3)
2010-2014	93.0	(92.1-93.7)	90.6	(89.9-91.2)	91.2	(90.2-92.2)	90.3	(88.4-91.9)	89.7	(88.1-91.0)	92.7	(91.5-93.7)	89.2	(88.8-89.6)
abs change*	6.7		4.0		11.1		12.7		7.1		7.9		10.0	
Pancreas														
1995-1999	24.7	(23.1-26.3)	23.5	(22.4-24.6)	16.6	(14.8-18.4)	15.8	(13.4-18.4)	22.8	(20.0-25.6)	19.2	(17.0-21.5)	16.3	(15.8-16.9)
2000-2004	30.7	(29.2-32.3)	27.9	(26.8-29.0)	21.5	(19.7-23.2)	20.4	(17.9-23.1)	22.2	(19.5-24.9)	22.2	(20.0-24.4)	19.8	(19.2-20.5)
2005-2009	35.5	(34.1-37.0)	31.0	(29.9-32.0)	26.0	(24.2-27.7)	27.5	(25.0-30.1)	24.6	(22.1-27.1)	31.1	(28.8-33.4)	25.7	(25.1-26.4)
2010-2014	47.5	(45.6-49.4)	37.9	(36.7-39.1)	37.0	(34.7-39.3)	37.8	(33.8-41.8)	30.6	(27.7-33.5)	37.4	(34.7-40.0)	31.6	(30.8-32.3)
abs change*	22.8		14.4		20.4		22.0		7.8		18.2		15.3	
Lung														
1995-1999	42.0	(41.2-42.8)	41.5	(41.0-42.0)	31.6	(30.7-32.5)	28.8	(27.4-30.2)	32.5	(31.1-33.9)	35.2	(33.9-36.4)	27.7	(27.3-28.0)
2000-2004	44.7	(43.9-45.5)	43.5	(43.0-43.9)	38.0	(37.1-39.0)	32.5	(31.1-33.8)	34.7	(33.4-36.0)	38.0	(36.7-39.2)	31.6	(31.3-31.9)
2005-2009	48.7	(47.9-49.5)	45.9	(45.4-46.4)	41.1	(40.2-42.1)	39.3	(38.0-40.6)	36.7	(35.3-38.0)	45.6	(44.3-46.8)	35.5	(35.2-35.8)
2010-2014	53.3	(52.3-54.3)	50.9	(50.3-51.5)	50.4	(49.2-51.5)	50.9	(49.1-52.7)	44.9	(43.3-46.5)	52.0	(50.5-53.4)	42.8	(42.4-43.2)
abs change*	11.3		9.4		18.8		22.1		12.4		16.8		15.1	
Ovary														
1995-1999	81.3	(79.7-82.7)	78.8	(77.7-79.8)	74.2	(72.3-76.1)	67.1	(64.1-70.0)	70.8	(67.5-73.8)	80.4	(78.3-82.3)	65.4	(64.7-66.0)
2000-2004	82.3	(80.8-83.7)	81.8	(80.7-82.8)	78.8	(76.9-80.5)	71.0	(68.2-73.6)	75.0	(71.9-77.8)	85.9	(84.0-87.6)	70.6	(69.9-71.2)
2005-2009	84.9	(83.6-86.2)	83.0	(82.0-84.0)	82.2	(80.5-83.8)	77.3	(74.8-79.7)	76.5	(73.6-79.0)	86.5	(84.7-88.2)	75.1	(74.5-75.7)

2010-2014	88.6	(87.0-90.0)	83.2	(82.1-84.3)	85.5	(83.4-87.2)	82.1	(78.7-85.1)	80.9	(77.6-83.7)	87.4	(85.3-89.2)	80.7	(80.1-81.3)
abs change*	7.3		4.4		11.3		15.0		10.1		7.0		15.3	

* Absolute change between 1995-1999 and 2010-2014

† Australia includes New South Wales (1995-2012), Victoria and Western Australia

‡ Canada includes Alberta, British Columbia, Manitoba, New Brunswick, Nova Scotia, Ontario, Prince Edward Island and Saskatchewan

¶ Ireland (1995-2013)

Table S3. Age-standardized 1-year net survival (in %) and 95% confidence intervals by cancer site, country and period of diagnosis in patients aged 75+ years

	Australia [†]		Canada [‡]		Denmark		Ireland [§]		New Zealand		Norway		UK	
Oesophagus														
1995-1999	30.6	(28.0-33.3)	28.7	(26.4-31.2)	20.6	(17.0-24.4)	18.9	(15.5-22.5)	22.1	(17.9-26.5)	21.0	(16.3-26.1)	18.2	(17.5-18.8)
2000-2004	33.1	(30.6-35.6)	28.8	(26.6-31.0)	20.8	(17.6-24.3)	22.6	(19.2-26.2)	21.9	(18.3-25.7)	23.4	(18.8-28.2)	23.0	(22.3-23.7)
2005-2009	35.8	(33.4-38.1)	30.9	(28.9-33.0)	21.2	(17.8-24.7)	28.3	(24.8-32.0)	28.3	(24.5-32.2)	27.6	(22.8-32.6)	27.3	(26.6-28.0)
2010-2014	40.7	(37.3-44.1)	31.4	(29.0-33.9)	32.8	(28.5-37.1)	32.5	(27.4-37.8)	32.1	(27.5-36.8)	32.2	(26.8-37.7)	31.7	(30.8-32.5)
abs change*	10.1		2.7		12.2		13.6		10.0		11.2		13.5	
Stomach														
1995-1999	37.9	(35.9-40.0)	36.2	(34.5-37.8)	28.5	(25.5-31.4)	24.3	(21.3-27.4)	30.5	(27.0-34.0)	34.1	(31.6-36.5)	22.2	(21.6-22.8)
2000-2004	40.9	(38.9-42.9)	36.4	(34.8-37.9)	27.5	(24.4-30.6)	25.5	(22.4-28.6)	29.1	(25.7-32.6)	34.8	(32.1-37.4)	26.2	(25.6-26.9)
2005-2009	43.7	(41.7-45.7)	40.0	(38.4-41.5)	31.3	(28.2-34.5)	31.3	(28.2-34.4)	36.3	(32.4-40.1)	36.6	(33.8-39.5)	29.7	(29.0-30.4)
2010-2014	44.8	(42.1-47.5)	41.5	(39.6-43.4)	38.5	(34.5-42.4)	38.7	(34.3-43.1)	33.4	(29.0-37.8)	40.9	(36.9-44.8)	34.9	(34.0-35.8)
abs change*	6.9		5.3		10.0		14.4		2.9		6.8		12.7	
Colon														
1995-1999	70.3	(69.3-71.3)	70.3	(69.6-71.1)	62.5	(60.9-64.0)	58.5	(56.1-60.8)	71.1	(69.3-72.9)	67.8	(66.3-69.3)	53.4	(52.9-53.8)
2000-2004	72.9	(72.0-73.8)	71.9	(71.2-72.6)	60.9	(59.4-62.4)	59.3	(57.2-61.4)	71.7	(70.1-73.3)	67.0	(65.6-68.4)	57.2	(56.7-57.7)
2005-2009	75.4	(74.6-76.2)	72.8	(72.1-73.5)	63.3	(61.8-64.6)	64.2	(62.3-66.1)	71.2	(69.6-72.7)	71.7	(70.4-73.0)	60.6	(60.2-61.1)
2010-2014	78.7	(77.6-79.8)	73.2	(72.4-74.0)	73.1	(71.5-74.6)	68.2	(65.6-70.6)	72.4	(70.7-74.1)	72.8	(71.3-74.3)	62.8	(62.3-63.3)
abs change*	8.4		2.9		10.6		9.7		1.3		5.0		9.4	
Rectum														
1995-1999	73.4	(71.5-75.2)	74.9	(73.3-76.4)	64.7	(62.2-67.0)	63.4	(59.4-67.1)	72.0	(68.3-75.4)	72.0	(69.6-74.3)	57.7	(56.9-58.5)
2000-2004	76.1	(74.5-77.6)	76.4	(75.0-77.8)	67.6	(65.3-69.9)	57.9	(54.1-61.5)	73.7	(70.5-76.7)	72.2	(69.9-74.4)	62.8	(62.1-63.6)
2005-2009	78.4	(76.9-79.9)	77.0	(75.7-78.3)	69.9	(67.7-72.0)	65.0	(61.5-68.3)	74.7	(71.6-77.5)	73.9	(71.6-76.1)	67.5	(66.7-68.2)
2010-2014	81.4	(79.2-83.4)	76.9	(75.3-78.5)	78.6	(76.2-80.7)	78.0	(73.2-82.0)	76.9	(73.5-79.9)	80.5	(77.7-83.0)	74.0	(73.2-74.9)
abs change*	8.0		2.0		13.9		14.6		4.9		8.5		16.3	
Pancreas														
1995-1999	13.5	(12.1-14.9)	12.0	(11.0-13.0)	9.1	(7.5-10.9)	8.4	(6.3-10.8)	11.5	(9.1-14.3)	7.6	(6.2-9.2)	7.3	(6.9-7.7)
2000-2004	16.4	(15.0-17.8)	13.6	(12.6-14.6)	8.0	(6.6-9.5)	10.9	(8.7-13.3)	12.1	(9.7-14.8)	10.8	(9.2-12.5)	8.4	(7.9-8.9)
2005-2009	16.0	(14.8-17.2)	15.8	(14.8-16.8)	11.8	(10.2-13.5)	12.3	(10.2-14.7)	10.4	(8.4-12.5)	11.8	(10.2-13.6)	10.1	(9.6-10.5)
2010-2014	21.8	(20.0-23.7)	15.6	(14.5-16.8)	16.9	(14.7-19.2)	15.8	(12.7-19.2)	11.1	(9.0-13.4)	13.5	(11.5-15.7)	13.2	(12.7-13.8)
abs change*	8.3		3.6		7.8		7.4		-0.4		5.9		5.9	
Lung														
1995-1999	27.6	(26.6-28.6)	30.7	(30.0-31.4)	17.5	(16.3-18.7)	17.3	(15.7-18.9)	26.3	(24.5-28.2)	22.8	(21.2-24.5)	15.7	(15.4-15.9)
2000-2004	30.1	(29.2-31.0)	31.3	(30.7-31.9)	22.1	(20.9-23.3)	17.8	(16.4-19.3)	24.5	(22.8-26.1)	23.1	(21.7-24.6)	19.1	(18.8-19.4)
2005-2009	31.8	(30.9-32.6)	33.5	(32.9-34.1)	24.9	(23.8-26.0)	22.6	(21.2-24.1)	24.8	(23.2-26.3)	27.5	(26.1-28.9)	21.8	(21.5-22.1)
2010-2014	38.0	(36.8-39.2)	37.3	(36.6-38.0)	36.1	(34.7-37.5)	31.1	(29.0-33.2)	27.5	(25.7-29.3)	33.8	(32.1-35.5)	29.4	(29.0-29.8)
abs change*	10.4		6.6		18.6		13.8		1.2		11.0		13.7	
Ovary														
1995-1999	43.4	(40.3-46.5)	48.5	(46.2-50.8)	38.1	(34.2-42.1)	29.5	(24.4-34.8)	36.3	(30.7-41.8)	46.8	(42.5-50.9)	31.4	(30.4-32.5)
2000-2004	50.0	(47.0-52.9)	47.4	(45.3-49.4)	43.9	(39.9-47.7)	31.5	(26.6-36.6)	36.2	(30.8-41.6)	49.2	(45.2-53.0)	34.1	(33.1-35.1)
2005-2009	51.2	(48.3-54.0)	48.3	(46.3-50.3)	49.1	(45.2-53.0)	30.5	(25.9-35.3)	37.1	(32.1-42.1)	50.0	(46.0-53.9)	38.2	(37.1-39.2)

2010-2014	54	(49.7-57.7)	47	(44.6-49.7)	58	(52.8-62.1)	38	(32.0-44.8)	48	(41.5-53.9)	54	(48.7-59.1)	45	(43.5-45.9)
abs change*	10.4		-1.3		19.5		8.9		11.5		7.3		13.3	

* Absolute change between 1995-1999 and 2010-2014

† Australia includes New South Wales (1995-2012), Victoria and Western Australia

‡ Canada includes Alberta, British Columbia, Manitoba, New Brunswick, Nova Scotia, Ontario, Prince Edward Island and Saskatchewan

¶ Ireland (1995-2013)

Table S4. Age-standardized 1-year net survival (in %) and 95% confidence intervals by cancer site, jurisdiction and period of diagnosis

	Australia			Canada												
	New South Wales [†]		Victoria	Western Australia		Alberta		British Columbia		Manitoba	New Brunswick		Nova Scotia			
Oesophagus																
1995-1999	42.8	(40.2-45.4)	43.1	(40.0-46.1)	40.5	(35.6-45.4)	36.0	(31.0-41.0)	37.3	(33.9-40.6)	38.9	(32.1-45.6)	32.8	(25.2-40.5)	36.7	(29.6-43.8)
2000-2004	41.6	(39.1-44.0)	46.3	(43.5-49.0)	44.6	(40.1-49.0)	36.7	(32.2-41.1)	37.6	(34.5-40.7)	33.8	(27.5-40.1)	39.3	(31.3-47.1)	30.5	(24.3-36.9)
2005-2009	44.5	(42.2-46.9)	50.0	(47.2-52.6)	51.7	(47.3-55.9)	37.7	(34.1-41.4)	42.3	(39.1-45.5)	39.2	(33.1-45.3)	38.6	(31.7-45.5)	40.3	(34.5-46.0)
2010-2014	46.5	(42.0-50.9)	53.4	(50.1-56.5)	56.7	(51.8-61.3)	41.1	(37.1-45.1)	46.5	(43.2-49.8)	37.5	(30.6-44.4)	46.7	(38.0-55.0)	41.5	(35.0-47.8)
abs change*	3.7		10.3		16.2		5.1		9.2		-1.4		13.9		4.8	
Stomach																
1995-1999	52.3	(50.5-54.1)	48.9	(46.9-50.9)	48.1	(44.5-51.5)	42.9	(39.7-45.9)	43.5	(41.0-45.9)	38.3	(33.8-42.6)	43.8	(38.6-48.9)	39.8	(35.1-44.5)
2000-2004	53.5	(51.7-55.3)	52.6	(50.6-54.6)	51.1	(47.3-54.7)	41.9	(38.9-44.8)	45.3	(42.9-47.8)	47.3	(42.8-51.5)	41.8	(36.5-47.0)	40.4	(35.6-45.0)
2005-2009	54.9	(53.1-56.7)	55.4	(53.4-57.4)	56.1	(52.6-59.5)	44.9	(42.0-47.7)	48.0	(45.6-50.4)	42.2	(37.9-46.4)	47.5	(42.3-52.5)	43.7	(38.9-48.3)
2010-2014	56.1	(52.9-59.2)	60.7	(58.4-62.8)	60.5	(56.7-64.2)	49.0	(45.5-52.4)	48.3	(45.3-51.1)	52.5	(47.1-57.5)	49.7	(43.0-55.9)	47.0	(40.8-52.9)
abs change*	3.8		11.8		12.4		6.1		4.8		14.2		5.9		7.2	
Colon																
1995-1999	79.6	(78.9-80.3)	78.2	(77.4-79.1)	78.1	(76.6-79.5)	76.2	(74.8-77.5)	78.6	(77.5-79.6)	78.4	(76.7-80.1)	78.9	(76.8-80.9)	75.8	(73.9-77.6)
2000-2004	82.5	(81.8-83.1)	80.7	(79.9-81.4)	82.8	(81.5-84.0)	78.6	(77.4-79.8)	80.6	(79.7-81.5)	79.4	(77.8-81.0)	81.0	(79.0-82.8)	79.8	(78.1-81.3)
2005-2009	84.3	(83.7-84.8)	84.8	(84.1-85.5)	85.0	(83.8-86.1)	80.4	(79.3-81.5)	83.0	(82.2-83.8)	81.5	(79.9-82.9)	82.1	(80.3-83.7)	80.7	(79.1-82.2)
2010-2014	86.9	(85.8-87.8)	87.1	(86.3-87.8)	87.2	(85.9-88.3)	82.3	(81.1-83.4)	83.6	(82.7-84.5)	81.5	(79.5-83.2)	84.1	(82.0-86.0)	78.8	(76.7-80.6)
abs change*	7.3		8.9		9.1		6.1		5.0		3.1		5.2		3.0	
Rectum																
1995-1999	83.1	(81.9-84.3)	82.1	(80.8-83.4)	81.8	(79.3-84.0)	82.7	(80.5-84.8)	84.0	(82.4-85.5)	83.9	(80.9-86.5)	83.5	(79.0-87.1)	80.6	(77.1-83.5)
2000-2004	85.8	(84.8-86.8)	86.1	(85.0-87.1)	85.3	(83.2-87.1)	83.9	(82.0-85.7)	84.9	(83.5-86.2)	83.2	(80.3-85.7)	80.0	(75.2-84.0)	84.6	(81.7-87.1)
2005-2009	87.8	(86.8-88.6)	88.3	(87.3-89.3)	87.2	(85.2-88.8)	85.1	(83.3-86.7)	85.2	(83.8-86.4)	86.0	(83.4-88.3)	84.7	(81.0-87.8)	84.6	(81.9-86.9)
2010-2014	88.7	(86.9-90.3)	90.8	(89.6-91.8)	87.4	(85.1-89.4)	86.5	(84.5-88.2)	87.7	(86.3-89.0)	84.5	(81.4-87.1)	85.3	(81.3-88.5)	81.6	(78.1-84.7)
abs change*	5.6		8.7		5.6		3.8		3.7		0.6		1.8		1.0	
Pancreas																
1995-1999	21.4	(19.7-23.2)	21.6	(19.7-23.7)	20.6	(17.6-23.8)	14.7	(12.7-16.9)	17.3	(15.5-19.1)	17.9	(14.6-21.4)	19.5	(15.6-23.8)	20.4	(16.8-24.3)
2000-2004	27.2	(25.5-28.9)	25.6	(23.7-27.5)	26.9	(23.7-30.2)	20.6	(18.4-22.9)	21.0	(19.1-22.8)	18.2	(15.0-21.5)	25.8	(21.7-30.1)	17.1	(13.6-21.0)
2005-2009	28.7	(27.2-30.3)	30.4	(28.5-32.2)	32.1	(29.2-35.1)	22.1	(20.1-24.3)	24.5	(22.6-26.4)	21.3	(17.9-25.0)	22.9	(19.0-26.9)	19.8	(16.4-23.4)
2010-2014	35.5	(32.8-38.2)	40.6	(38.5-42.6)	45.2	(42.0-48.4)	29.8	(27.5-32.2)	29.7	(27.6-31.7)	31.2	(27.4-35.1)	28.5	(23.7-33.5)	21.6	(17.8-25.6)
abs change*	14.1		19.0		24.6		15.1		12.4		13.3		9.0		1.2	
Lung																
1995-1999	38.4	(37.5-39.3)	37.7	(36.6-38.7)	36.5	(34.7-38.2)	36.0	(34.7-37.3)	36.0	(35.1-36.9)	39.0	(37.2-40.7)	39.5	(37.5-41.5)	36.3	(34.6-38.0)
2000-2004	40.8	(40.0-41.7)	40.2	(39.2-41.2)	39.9	(38.1-41.6)	37.1	(35.9-38.3)	37.9	(37.0-38.9)	43.0	(41.2-44.7)	41.9	(39.9-43.8)	39.1	(37.4-40.8)
2005-2009	43.6	(42.8-44.4)	43.8	(42.8-44.8)	44.4	(42.8-46.0)	41.2	(40.0-42.3)	42.3	(41.4-43.3)	43.5	(41.8-45.2)	42.4	(40.4-44.3)	39.8	(38.0-41.5)
2010-2014	46.5	(45.0-48.0)	49.7	(48.5-50.8)	50.4	(48.6-52.1)	47.0	(45.7-48.3)	46.4	(45.3-47.6)	45.3	(43.2-47.4)	51.7	(49.5-53.9)	43.4	(41.4-45.4)
abs change*	8.1		12.0		13.9		11.0		10.4		6.3		12.2		7.1	
Ovary																
1995-1999	70.3	(68.0-72.4)	71.0	(68.5-73.3)	68.0	(63.2-72.3)	65.7	(62.1-69.1)	72.7	(70.2-75.1)	69.3	(64.4-73.6)	62.7	(55.6-69.0)	70.9	(65.3-75.8)
2000-2004	74.1	(72.0-76.0)	71.1	(68.7-73.3)	73.8	(69.8-77.4)	69.5	(66.2-72.6)	73.4	(70.9-75.6)	70.5	(66.0-74.5)	66.4	(60.6-71.6)	67.6	(61.9-72.7)
2005-2009	73.4	(71.4-75.3)	76.0	(73.8-78.0)	78.8	(75.2-82.0)	72.1	(68.9-75.1)	73.9	(71.5-76.0)	68.6	(63.9-72.8)	70.1	(64.5-75.1)	74.4	(69.4-78.7)
2010-2014	76.3	(72.7-79.6)	78.5	(75.9-80.8)	81.2	(77.2-84.5)	71.2	(67.5-74.6)	75.2	(72.6-77.6)	77.1	(70.8-82.2)	67.8	(61.0-73.7)	67.0	(60.8-72.4)
abs change*	6.0		7.5		13.2		5.5		2.5		7.8		5.1		-3.9	

* Absolute change between 1995-1999 and 2010-2014, [†]New South Wales (1995-2012), [‡]Ireland (1995-2013)

Table S4 (cont.). Age-standardized 1-year net survival (in %) and 95% confidence intervals by cancer site, jurisdiction and period of diagnosis

	Canada													
	Ontario		Prince Edward Isl.		Saskatchewan		Denmark		Ireland [‡]		New Zealand		Norway	
Oesophagus														
1995-1999	40.6	(38.6-42.7)	27.0	(13.3-42.7)	27.4	(21.2-33.8)	27.1	(24.7-29.4)	30.8	(28.3-33.3)	29.5	(26.3-32.7)	27.9	(24.6-31.3)
2000-2004	43.0	(41.1-44.9)	30.1	(15.6-46.1)	32.9	(26.4-39.5)	29.6	(27.4-31.8)	36.6	(34.1-39.1)	35.0	(31.9-38.1)	33.5	(30.1-36.9)
2005-2009	41.8	(40.0-43.6)	29.6	(15.5-45.1)	32.7	(25.6-40.0)	33.6	(31.4-35.9)	43.5	(41.1-45.8)	40.1	(37.1-43.0)	41.0	(37.8-44.3)
2010-2014	44.3	(42.1-46.4)	36.8	(23.0-50.6)	41.3	(33.6-48.7)	44.4	(41.4-47.4)	49.9	(46.6-53.2)	44.1	(40.8-47.3)	47.3	(43.8-50.6)
abs change*	3.7		9.8		13.9		17.3		19.1		14.6		19.4	
Stomach														
1995-1999	47.9	(46.5-49.3)	33.0	(20.7-45.8)	41.4	(36.5-46.2)	36.6	(34.6-38.5)	33.3	(31.3-35.4)	40.0	(37.8-42.3)	42.7	(40.8-44.7)
2000-2004	50.4	(49.0-51.8)	46.0	(30.5-60.2)	41.4	(36.4-46.4)	37.7	(35.7-39.7)	38.3	(36.2-40.5)	42.4	(40.1-44.7)	47.3	(45.2-49.3)
2005-2009	52.7	(51.4-54.0)	40.1	(25.8-54.1)	43.9	(38.9-48.8)	43.6	(41.6-45.5)	47.2	(45.1-49.3)	45.9	(43.5-48.2)	50.9	(48.8-53.1)
2010-2014	55.4	(53.8-57.0)	49.9	(34.4-63.7)	51.5	(45.6-57.1)	52.5	(50.1-54.9)	52.3	(49.5-55.0)	49.0	(46.2-51.7)	53.5	(50.9-56.0)
abs change*	7.5		16.9		10.1		15.9		19.0		9.0		10.8	
Colon														
1995-1999	77.5	(76.9-78.1)	78.2	(72.5-82.8)	78.6	(76.5-80.4)	70.9	(69.9-71.8)	70.9	(69.7-72.1)	76.4	(75.4-77.3)	76.3	(75.4-77.2)
2000-2004	80.9	(80.4-81.4)	78.5	(73.4-82.7)	77.9	(75.9-79.6)	72.9	(72.0-73.8)	72.2	(71.0-73.3)	78.2	(77.2-79.0)	77.3	(76.5-78.2)
2005-2009	83.4	(83.0-83.9)	80.9	(76.0-84.9)	80.8	(79.0-82.4)	75.9	(75.1-76.7)	78.3	(77.3-79.2)	79.1	(78.3-80.0)	80.1	(79.3-80.9)
2010-2014	84.2	(83.6-84.7)	82.1	(78.0-85.6)	83.1	(81.2-84.7)	82.8	(82.0-83.6)	80.8	(79.5-82.0)	80.8	(79.9-81.8)	82.6	(81.8-83.4)
abs change*	6.7		3.9		4.5		11.9		9.9		4.4		6.3	
Rectum														
1995-1999	83.4	(82.3-84.4)	81.3	(70.5-88.4)	81.3	(77.9-84.2)	75.6	(74.3-76.8)	73.5	(71.6-75.3)	79.6	(77.9-81.1)	81.1	(79.8-82.3)
2000-2004	85.9	(85.0-86.7)	81.3	(72.2-87.6)	81.0	(77.7-83.9)	79.1	(77.9-80.2)	75.9	(74.1-77.5)	82.5	(81.0-83.9)	82.7	(81.6-83.8)
2005-2009	87.4	(86.6-88.1)	89.2	(79.7-94.5)	85.5	(82.8-87.8)	82.6	(81.6-83.6)	81.6	(80.1-83.0)	83.9	(82.5-85.1)	86.0	(85.0-87.0)
2010-2014	87.0	(86.0-88.0)	87.3	(79.3-92.4)	85.2	(81.9-87.8)	87.6	(86.6-88.5)	86.7	(84.7-88.4)	85.9	(84.5-87.3)	89.1	(88.0-90.2)
abs change*	3.6		6.0		3.9		12.0		13.2		6.3		8.0	
Pancreas														
1995-1999	23.3	(22.1-24.6)	10.7	(4.0-21.1)	13.6	(10.3-17.3)	14.4	(13.1-15.8)	13.7	(11.8-15.6)	19.5	(17.4-21.6)	15.9	(14.3-17.5)
2000-2004	26.9	(25.7-28.1)	19.3	(11.0-29.3)	19.9	(16.1-23.9)	17.5	(16.3-18.9)	17.6	(15.7-19.7)	19.2	(17.2-21.3)	18.9	(17.3-20.5)
2005-2009	30.4	(29.2-31.5)	28.3	(19.1-38.2)	19.1	(15.9-22.6)	21.9	(20.5-23.2)	23.1	(21.2-25.1)	20.4	(18.6-22.3)	25.5	(23.8-27.2)
2010-2014	33.8	(32.4-35.1)	27.2	(19.3-35.7)	30.2	(25.7-34.7)	31.1	(29.3-32.8)	31.4	(28.4-34.4)	24.8	(22.7-27.0)	30.5	(28.5-32.4)
abs change*	10.5		16.5		16.6		16.7		17.7		5.3		14.6	
Lung														
1995-1999	39.9	(39.3-40.4)	38.1	(33.7-42.5)	36.2	(34.2-38.1)	27.5	(26.7-28.2)	25.5	(24.4-26.6)	30.7	(29.5-31.8)	31.6	(30.6-32.6)
2000-2004	41.0	(40.5-41.6)	32.1	(27.6-36.7)	37.9	(35.8-40.0)	33.4	(32.7-34.2)	28.2	(27.2-29.3)	31.7	(30.7-32.8)	33.7	(32.7-34.6)
2005-2009	42.8	(42.2-43.3)	44.7	(38.7-50.5)	41.3	(39.4-43.2)	36.4	(35.7-37.2)	34.5	(33.4-35.5)	33.2	(32.2-34.3)	40.3	(39.4-41.3)
2010-2014	47.5	(46.8-48.2)	41.6	(37.3-45.7)	46.1	(43.9-48.3)	46.2	(45.3-47.2)	45.2	(43.8-46.6)	39.9	(38.6-41.1)	46.7	(45.6-47.8)
abs change*	7.6		3.5		9.9		18.7		19.7		9.2		15.1	
Ovary														
1995-1999	71.1	(69.7-72.6)	71.3	(54.7-82.7)	63.4	(58.2-68.1)	63.7	(61.8-65.6)	56.2	(53.4-58.9)	60.7	(57.8-63.6)	70.6	(68.6-72.6)
2000-2004	72.6	(71.3-73.9)	72.3	(57.3-82.8)	70.7	(65.5-75.2)	68.7	(66.8-70.5)	59.5	(56.8-62.1)	63.7	(60.8-66.5)	75.2	(73.3-77.0)
2005-2009	73.8	(72.4-75.0)	79.5	(65.7-88.3)	66.4	(61.3-71.0)	72.6	(70.8-74.3)	63.8	(61.2-66.2)	65.0	(62.4-67.6)	75.9	(74.1-77.7)
2010-2014	72.4	(70.7-74.0)	65.9	(52.3-76.5)	71.7	(65.8-76.8)	77.4	(75.3-79.3)	69.5	(66.1-72.6)	71.5	(68.5-74.4)	77.5	(75.2-79.7)
abs change*	1.3		-5.4		8.3		13.7		13.3		10.8		6.9	

* Absolute change between 1995-1999 and 2010-2014, † New South Wales (1995-2012), ‡ Ireland (1995-2013)

Table S4 (cont.). Age-standardized 1-year net survival (in %) and 95% confidence intervals by cancer site, jurisdiction and period of diagnosis

	UK							
	England		Northern Ireland		Scotland		Wales	
Oesophagus								
1995-1999	29.6	(28.9-30.2)	35.2	(31.6-38.8)	31.4	(29.8-32.9)	29.2	(26.9-31.5)
2000-2004	36.4	(35.8-37.0)	33.3	(29.7-37.0)	37.2	(35.5-38.8)	38.0	(35.7-40.3)
2005-2009	41.5	(40.9-42.1)	41.6	(38.1-45.0)	40.3	(38.5-42.0)	41.2	(38.8-43.5)
2010-2014	46.6	(45.9-47.3)	48.5	(44.5-52.4)	44.9	(42.9-46.8)	46.4	(43.4-49.2)
abs change*	17.0		13.3		13.5		17.2	
Stomach								
1995-1999	34.5	(34.0-35.0)	36.6	(33.8-39.4)	35.9	(34.3-37.4)	34.9	(33.0-36.8)
2000-2004	39.4	(38.8-39.9)	39.7	(36.6-42.7)	38.2	(36.5-39.8)	40.1	(38.0-42.3)
2005-2009	44.0	(43.4-44.6)	43.1	(39.8-46.3)	41.2	(39.4-42.9)	41.3	(38.9-43.5)
2010-2014	47.4	(46.6-48.2)	45.0	(41.1-48.9)	45.0	(42.8-47.2)	43.6	(40.7-46.5)
abs change*	12.9		8.4		9.1		8.7	
Colon								
1995-1999	67.1	(66.8-67.5)	73.1	(71.5-74.7)	70.9	(70.0-71.8)	66.9	(65.7-68.1)
2000-2004	70.6	(70.3-70.9)	74.7	(73.1-76.2)	73.3	(72.4-74.2)	71.0	(69.8-72.1)
2005-2009	74.0	(73.7-74.3)	75.1	(73.7-76.5)	75.2	(74.4-76.0)	71.7	(70.6-72.8)
2010-2014	77.0	(76.7-77.3)	80.0	(78.4-81.5)	77.4	(76.5-78.3)	74.7	(73.5-75.9)
abs change*	9.9		6.9		6.5		7.8	
Rectum								
1995-1999	72.7	(72.2-73.1)	77.7	(75.0-80.0)	74.5	(73.0-75.9)	73.6	(71.7-75.4)
2000-2004	77.1	(76.7-77.6)	77.6	(75.0-79.9)	79.6	(78.3-80.8)	76.6	(74.8-78.2)
2005-2009	80.4	(80.0-80.8)	82.6	(80.4-84.6)	81.2	(80.0-82.4)	81.0	(79.5-82.5)
2010-2014	84.9	(84.4-85.3)	84.6	(82.1-86.8)	84.6	(83.2-85.9)	84.9	(83.3-86.4)
abs change*	12.2		6.9		10.1		11.3	
Pancreas								
1995-1999	13.5	(13.0-14.0)	12.1	(9.5-15.1)	15.6	(14.2-17.1)	14.7	(12.8-16.6)
2000-2004	16.7	(16.2-17.2)	12.4	(9.9-15.0)	16.4	(15.0-17.9)	16.7	(14.8-18.6)
2005-2009	21.7	(21.2-22.2)	17.1	(14.6-19.9)	18.9	(17.4-20.4)	19.8	(17.9-21.8)
2010-2014	26.7	(26.1-27.3)	20.9	(17.6-24.4)	24.4	(22.5-26.3)	25.6	(23.4-28.0)
abs change*	13.2		8.8		8.8		10.9	
Lung								
1995-1999	23.8	(23.5-24.1)	27.2	(25.6-28.7)	26.5	(25.8-27.2)	23.9	(22.9-24.9)
2000-2004	27.9	(27.6-28.2)	28.8	(27.3-30.3)	29.1	(28.3-29.8)	27.0	(26.0-28.0)
2005-2009	31.5	(31.3-31.8)	31.5	(30.0-32.9)	32.3	(31.6-33.1)	29.9	(28.9-31.0)
2010-2014	39.2	(38.9-39.6)	36.9	(35.2-38.7)	38.5	(37.6-39.4)	36.8	(35.5-38.2)
abs change*	15.4		9.7		12.0		12.9	
Ovary								
1995-1999	55.1	(54.4-55.7)	58.7	(54.6-62.5)	58.7	(56.8-60.5)	55.5	(53.1-57.8)
2000-2004	59.9	(59.3-60.6)	61.1	(57.3-64.6)	60.9	(59.0-62.7)	58.7	(56.3-61.0)
2005-2009	64.7	(64.1-65.3)	63.5	(60.0-66.8)	63.5	(61.6-65.3)	61.2	(58.8-63.5)
2010-2014	70.8	(70.1-71.5)	66.2	(62.2-69.9)	68.5	(66.3-70.6)	68.6	(65.9-71.2)
abs change*	15.7		7.5		9.8		13.1	

* Absolute change between 1995-1999 and 2010-2014, † New South Wales (1995-2012), ‡ Ireland (1995-2013)

Table S5. Age-standardized 5-year net survival (in %) and 95% confidence intervals by cancer site, jurisdiction and period of diagnosis

	Australia						Canada									
	New South Wales†		Victoria		Western Australia		Alberta		British Columbia		Manitoba		New Brunswick		Nova Scotia	
Oesophagus																
1995-1999	19.3	(17.2-21.6)	17.7	(15.3-20.2)	16.2	(12.7-20.2)	10.9	(7.9-14.4)	12.1	(9.8-14.7)	12.9	(8.4-18.3)	9.7	(5.1-16.0)	10.9	(6.6-16.4)
2000-2004	18.1	(16.1-20.1)	18.6	(16.3-20.9)	14.9	(11.8-18.3)	13.4	(10.4-16.8)	13.2	(11.0-15.6)	8.9	(5.3-13.7)	12.5	(7.9-18.3)	8.7	(5.4-13.0)
2005-2009	17.4	(15.5-19.4)	20.0	(17.8-22.3)	18.3	(14.9-21.9)	11.4	(9.1-14.0)	16.2	(13.9-18.7)	9.5	(5.9-14.1)	12.5	(8.0-18.1)	13.6	(9.1-19.1)
2010-2014	19.1	(16.1-22.2)	26.4	(23.7-29.3)	25.2	(20.7-29.9)	16.6	(13.6-19.8)	19.1	(16.3-22.2)	14.4	(9.1-20.9)	15.0	(9.4-21.7)	13.7	(9.1-19.2)
abs change*	-0.2		8.7		9.0		5.7		7.0		1.5		5.3		2.8	
Stomach																
1995-1999	27.5	(25.7-29.2)	24.0	(22.1-25.9)	24.5	(21.3-27.9)	20.3	(17.6-23.1)	20.6	(18.4-22.8)	17.0	(13.5-20.8)	20.8	(16.4-25.6)	18.8	(14.9-23.1)
2000-2004	29.3	(27.5-31.1)	27.4	(25.5-29.3)	25.5	(22.1-29.1)	21.8	(19.2-24.5)	21.9	(19.7-24.1)	21.2	(17.4-25.3)	21.4	(16.8-26.4)	20.5	(16.5-24.9)
2005-2009	28.7	(27.0-30.5)	28.9	(27.0-30.9)	31.7	(28.2-35.2)	23.3	(20.7-26.0)	24.0	(21.8-26.2)	16.6	(13.3-20.1)	25.7	(21.1-30.6)	17.7	(14.0-21.8)
2010-2014	30.2	(27.7-32.8)	33.5	(31.2-35.8)	35.4	(31.5-39.3)	25.2	(22.1-28.4)	26.5	(23.9-29.2)	25.6	(20.9-30.7)	29.7	(23.2-36.5)	26.7	(21.3-32.4)
abs change*	2.7		9.5		10.9		4.9		5.9		8.6		8.9		7.9	
Colon																
1995-1999	61.0	(59.9-62.0)	57.8	(56.6-58.9)	59.5	(57.5-61.5)	55.7	(53.9-57.5)	58.1	(56.7-59.6)	57.7	(55.3-60.1)	58.4	(55.4-61.2)	56.2	(53.6-58.7)
2000-2004	64.9	(64.0-65.8)	60.7	(59.6-61.8)	66.1	(64.2-67.9)	59.1	(57.5-60.7)	61.5	(60.2-62.8)	58.9	(56.6-61.2)	62.8	(60.0-65.5)	59.8	(57.5-62.1)
2005-2009	67.8	(66.9-68.6)	65.4	(64.3-66.4)	69.5	(67.7-71.1)	63.2	(61.7-64.7)	65.5	(64.2-66.7)	62.6	(60.3-64.7)	65.5	(62.9-68.0)	62.8	(60.5-65.0)
2010-2014	71.3	(70.0-72.4)	69.2	(68.1-70.3)	72.9	(71.0-74.6)	65.6	(63.9-67.2)	66.0	(64.7-67.3)	64.2	(61.6-66.7)	68.3	(65.2-71.2)	62.4	(59.8-64.9)
abs change*	10.3		11.4		13.4		9.9		7.9		6.5		9.9		6.2	
Rectum																
1995-1999	60.5	(58.8-62.2)	58.3	(56.4-60.2)	56.4	(52.9-59.8)	57.0	(53.8-60.1)	59.9	(57.5-62.2)	55.8	(51.4-59.9)	58.9	(52.7-64.7)	51.5	(46.7-56.0)
2000-2004	64.5	(62.9-66.0)	63.7	(62.0-65.4)	63.6	(60.5-66.5)	62.1	(59.3-64.8)	61.4	(59.2-63.6)	58.5	(54.3-62.4)	60.5	(54.2-66.2)	62.6	(58.1-66.8)
2005-2009	67.4	(65.9-68.9)	69.3	(67.7-70.9)	70.3	(67.4-73.0)	64.5	(61.9-67.0)	62.6	(60.6-64.6)	63.7	(59.7-67.4)	65.5	(60.2-70.3)	62.8	(58.8-66.6)
2010-2014	68.7	(66.6-70.6)	72.1	(70.3-73.9)	71.9	(68.7-74.9)	65.1	(62.3-67.8)	67.3	(65.1-69.4)	65.0	(60.8-68.9)	67.7	(62.3-72.4)	60.5	(55.7-65.0)
abs change*	8.2		13.8		15.5		8.1		7.4		9.2		8.8		9.0	
Pancreas																
1995-1999	6.3	(5.3-7.4)	5.9	(4.8-7.2)	7.6	(5.7-9.9)	4.7	(3.4-6.2)	4.7	(3.7-5.9)	4.5	(2.8-6.9)	4.3	(2.4-6.9)	6.2	(4.0-8.9)
2000-2004	7.6	(6.6-8.8)	8.0	(6.9-9.3)	7.5	(5.6-9.7)	5.2	(4.0-6.6)	5.2	(4.2-6.3)	3.1	(1.8-5.1)	6.2	(4.0-9.1)	3.3	(1.8-5.4)
2005-2009	9.5	(8.5-10.6)	8.5	(7.3-9.7)	10.2	(8.3-12.3)	6.8	(5.5-8.2)	8.6	(7.3-10.0)	5.1	(3.4-7.2)	4.4	(2.7-6.7)	5.8	(4.0-8.1)
2010-2014	14.1	(12.4-15.9)	13.7	(12.1-15.4)	15.2	(12.7-18.0)	10.3	(8.6-12.2)	10.6	(9.1-12.1)	13.1	(10.0-16.5)	7.6	(5.2-10.7)	7.1	(4.9-9.8)
abs change*	7.8		7.8		7.6		5.6		5.9		8.6		3.3		0.9	
Lung																
1995-1999	13.7	(13.0-14.4)	13.2	(12.4-14.0)	12.7	(11.5-14.0)	13.1	(12.2-14.1)	13.7	(13.0-14.4)	15.5	(14.1-16.9)	14.2	(12.7-15.8)	14.7	(13.3-16.0)
2000-2004	15.6	(14.9-16.3)	14.1	(13.4-14.9)	14.7	(13.4-16.0)	13.1	(12.3-14.0)	14.5	(13.8-15.3)	18.9	(17.4-20.4)	15.8	(14.3-17.4)	14.8	(13.5-16.2)
2005-2009	17.1	(16.4-17.8)	17.5	(16.7-18.3)	17.7	(16.4-19.0)	16.3	(15.4-17.3)	18.3	(17.5-19.1)	20.2	(18.8-21.7)	17.2	(15.8-18.8)	16.9	(15.5-18.3)
2010-2014	19.9	(18.9-20.9)	22.4	(21.4-23.4)	21.4	(19.9-23.0)	20.9	(19.8-22.0)	21.3	(20.2-22.3)	22.7	(20.9-24.5)	24.9	(22.1-27.8)	19.3	(17.6-21.1)
abs change*	6.2		9.2		8.7		7.8		7.6		7.2		10.7		4.6	
Ovary																
1995-1999	34.8	(32.5-37.1)	36.7	(34.1-39.4)	34.5	(29.7-39.3)	30.2	(26.8-33.7)	33.6	(30.9-36.3)	32.6	(27.7-37.6)	29.4	(22.6-36.5)	37.3	(31.3-43.4)
2000-2004	37.2	(34.9-39.5)	34.9	(32.4-37.4)	36.5	(32.3-40.8)	30.7	(27.5-33.9)	35.1	(32.5-37.8)	31.2	(26.7-35.8)	31.8	(26.2-37.6)	33.3	(27.7-38.9)
2005-2009	39.5	(37.2-41.7)	39.8	(37.4-42.2)	43.4	(39.2-47.6)	34.8	(31.5-38.1)	37.6	(35.1-40.2)	38.0	(33.1-42.9)	34.1	(28.2-40.1)	36.3	(30.9-41.7)
2010-2014	41.7	(38.6-44.7)	42.8	(39.9-45.7)	47.6	(42.8-52.2)	36.4	(32.7-40.1)	38.6	(35.8-41.4)	43.6	(37.0-50.0)	38.7	(32.0-45.3)	38.5	(32.4-44.5)
abs change*	6.9		6.1		13.1		6.2		5.0		11.0		9.3		1.2	

* Absolute change between 1995-1999 and 2010-2014, † New South Wales (1995-2012), ‡ Ireland (1995-2013)

Table S5 (cont.). Age-standardized 5-year net survival (in %) and 95% confidence intervals by cancer site, jurisdiction and period of diagnosis

	Canada													
	Ontario		Prince Edward Isl.		Saskatchewan		Denmark		Ireland‡		New Zealand		Norway	
Oesophagus														
1995-1999	15.3	(13.7-16.9)	3.5	(0.3-14.6)	8.7	(4.9-13.8)	5.1	(3.9-6.6)	10.9	(9.1-12.9)	13.6	(11.2-16.1)	8.7	(6.7-11.0)
2000-2004	16.2	(14.7-17.8)	16.9	(6.1-32.3)	10.5	(4.7-19.2)	8.6	(7.2-10.1)	12.8	(11.0-14.7)	11.6	(9.6-13.9)	9.0	(6.8-11.6)
2005-2009	16.2	(14.8-17.7)	10.0	(3.0-21.8)	10.6	(6.7-15.4)	10.5	(9.0-12.0)	17.2	(15.3-19.2)	14.3	(12.1-16.6)	13.2	(10.8-15.7)
2010-2014	16.5	(14.7-18.3)	19.1	(9.2-31.7)	10.2	(5.7-16.2)	14.7	(12.1-17.5)	21.9	(19.3-24.5)	16.9	(14.3-19.7)	19.4	(16.5-22.5)
abs change*	1.2		15.6		1.5		9.6		11.0		3.3		10.7	
Stomach														
1995-1999	23.5	(22.1-24.8)	16.1	(7.3-28.0)	16.7	(13.0-20.8)	14.0	(12.5-15.7)	17.3	(15.5-19.1)	21.3	(19.2-23.4)	21.3	(19.5-23.1)
2000-2004	26.4	(25.1-27.7)	22.5	(10.9-36.7)	19.0	(14.8-23.8)	15.2	(13.7-16.9)	18.5	(16.7-20.4)	23.7	(21.6-25.9)	22.0	(20.2-23.9)
2005-2009	29.9	(28.6-31.2)	13.1	(5.3-24.5)	19.4	(15.3-23.8)	15.7	(14.2-17.3)	22.0	(20.2-23.9)	24.0	(21.9-26.2)	25.1	(23.1-27.2)
2010-2014	32.7	(31.1-34.4)	16.5	(6.7-30.2)	25.9	(20.8-31.2)	22.6	(20.6-24.8)	28.4	(26.1-30.9)	24.5	(22.1-27.0)	26.9	(24.6-29.3)
abs change*	9.2		0.4		9.2		8.6		11.1		3.2		5.6	
Colon														
1995-1999	58.2	(57.4-59.0)	55.9	(48.8-62.4)	59.6	(56.8-62.3)	49.1	(47.9-50.3)	50.0	(48.5-51.6)	59.3	(58.0-60.6)	55.7	(54.4-57.0)
2000-2004	62.1	(61.3-62.8)	56.7	(49.9-62.9)	60.2	(57.6-62.6)	53.2	(52.0-54.3)	52.7	(51.3-54.2)	60.3	(59.1-61.5)	58.0	(56.8-59.1)
2005-2009	66.6	(65.9-67.3)	60.0	(53.6-65.9)	62.4	(59.9-64.9)	57.5	(56.4-58.6)	58.0	(56.7-59.3)	61.6	(60.4-62.8)	62.2	(61.1-63.3)
2010-2014	68.3	(67.4-69.1)	60.1	(54.0-65.7)	65.4	(62.7-68.0)	65.7	(64.5-66.9)	61.8	(60.2-63.3)	62.1	(60.8-63.4)	65.4	(64.2-66.5)
abs change*	10.1		4.2		5.8		16.6		11.8		2.8		9.7	
Rectum														
1995-1999	58.2	(56.6-59.7)	42.8	(30.5-54.5)	53.4	(48.8-57.9)	48.1	(46.4-49.8)	47.6	(45.1-50.0)	56.3	(54.0-58.6)	57.3	(55.5-59.1)
2000-2004	62.1	(60.7-63.5)	49.6	(39.0-59.3)	60.5	(56.0-64.8)	54.0	(52.3-55.7)	51.0	(48.8-53.2)	59.7	(57.5-61.8)	61.5	(59.8-63.2)
2005-2009	67.2	(65.9-68.4)	75.4	(63.3-84.0)	63.3	(59.1-67.1)	60.7	(59.2-62.1)	57.1	(54.9-59.2)	62.4	(60.4-64.4)	65.4	(63.7-67.0)
2010-2014	68.6	(67.0-70.1)	68.5	(58.0-76.9)	66.5	(61.9-70.7)	69.1	(67.4-70.8)	62.4	(59.9-64.9)	65.4	(63.1-67.5)	68.8	(66.9-70.6)
abs change*	10.4		25.7		13.1		21.0		14.8		9.1		11.5	
Pancreas														
1995-1999	9.2	(8.4-10.2)	3.3	(0.6-10.0)	2.9	(1.4-5.2)	3.2	(2.5-4.0)	5.6	(4.4-7.0)	8.8	(7.3-10.6)	4.4	(3.5-5.5)
2000-2004	10.7	(9.8-11.6)	7.6	(2.7-16.0)	5.4	(3.4-8.1)	3.8	(3.1-4.6)	5.9	(4.7-7.3)	6.9	(5.6-8.5)	4.7	(3.8-5.7)
2005-2009	12.2	(11.3-13.1)	1.1	(0.1-6.6)	5.6	(3.8-8.0)	5.7	(4.9-6.5)	7.0	(5.8-8.4)	7.3	(6.1-8.7)	5.9	(5.0-7.0)
2010-2014	12.2	(11.2-13.3)	10.0	(5.1-17.0)	10.0	(7.1-13.4)	9.6	(8.5-10.9)	9.6	(7.8-11.6)	8.2	(6.8-9.7)	9.9	(8.5-11.4)
abs change*	3.0		6.7		7.1		6.4		4.0		-0.6		5.5	
Lung														
1995-1999	16.7	(16.3-17.2)	13.9	(10.9-17.4)	14.2	(12.7-15.7)	8.2	(7.7-8.7)	9.3	(8.5-10.1)	11.5	(10.7-12.4)	10.8	(10.1-11.6)
2000-2004	17.2	(16.7-17.6)	10.2	(7.5-13.4)	15.2	(13.7-16.8)	9.7	(9.2-10.2)	10.1	(9.3-10.9)	10.9	(10.2-11.7)	11.8	(11.1-12.5)
2005-2009	19.3	(18.9-19.8)	13.6	(9.5-18.4)	16.2	(14.6-17.8)	12.4	(11.9-13.0)	13.4	(12.7-14.2)	11.9	(11.1-12.7)	15.4	(14.7-16.2)
2010-2014	22.3	(21.6-22.9)	13.1	(9.7-17.1)	20.6	(18.6-22.6)	18.9	(18.1-19.6)	19.8	(18.7-20.9)	15.5	(14.5-16.5)	20.4	(19.4-21.4)
abs change*	5.6		-0.8		6.4		10.7		10.5		4.0		9.6	
Ovary														
1995-1999	38.4	(36.7-40.0)	37.2	(21.8-52.6)	28.7	(23.9-33.7)	32.0	(30.0-33.9)	27.8	(25.2-30.5)	31.9	(29.0-34.8)	37.0	(34.8-39.3)
2000-2004	39.2	(37.7-40.7)	33.2	(19.0-48.2)	32.4	(27.3-37.6)	34.2	(32.3-36.1)	29.6	(27.2-32.1)	33.5	(30.7-36.4)	40.6	(38.4-42.8)
2005-2009	42.3	(40.8-43.8)	41.4	(25.3-56.7)	39.9	(34.5-45.2)	38.3	(36.3-40.2)	31.1	(28.7-33.5)	32.7	(30.0-35.4)	41.3	(39.1-43.5)
2010-2014	42.2	(40.3-44.0)	36.8	(25.4-48.2)	41.2	(35.2-47.1)	42.1	(39.8-44.5)	36.0	(33.0-38.9)	36.3	(33.3-39.4)	46.2	(43.6-48.8)
abs change*	3.8		-0.4		12.5		10.1		8.2		4.4		9.2	

* Absolute change between 1995-1999 and 2010-2014, † New South Wales (1995-2012), ‡ Ireland (1995-2013)

Table S5 (cont.). Age-standardized 5-year net survival (in %) and 95% confidence intervals by cancer site, jurisdiction and period of diagnosis

	UK							
	England		Northern Ireland		Scotland		Wales	
Oesophagus								
1995-1999	8.2	(7.8-8.6)	11.2	(8.7-14.1)	9.5	(8.4-10.7)	11.4	(9.7-13.1)
2000-2004	11.5	(11.0-11.9)	12.5	(9.9-15.5)	10.1	(8.9-11.3)	12.6	(11.0-14.4)
2005-2009	14.0	(13.5-14.5)	17.3	(14.5-20.2)	12.2	(11.0-13.5)	12.2	(10.6-13.8)
2010-2014	16.5	(15.9-17.0)	19.1	(15.7-22.7)	13.7	(12.1-15.3)	14.9	(12.7-17.2)
abs change*	8.3		7.9		4.2		3.5	
Stomach								
1995-1999	13.9	(13.4-14.3)	18.0	(15.6-20.5)	14.2	(13.0-15.5)	14.3	(12.8-15.9)
2000-2004	16.0	(15.6-16.5)	16.8	(14.4-19.4)	15.6	(14.3-17.0)	16.7	(15.0-18.5)
2005-2009	19.3	(18.7-19.8)	19.8	(17.0-22.7)	17.2	(15.8-18.7)	18.2	(16.2-20.2)
2010-2014	21.2	(20.5-21.8)	21.2	(18.1-24.5)	19.9	(18.0-21.8)	17.4	(15.2-19.8)
abs change*	7.3		3.2		5.7		3.1	
Colon								
1995-1999	46.5	(46.1-46.9)	52.9	(50.7-55.0)	50.0	(48.9-51.2)	46.3	(44.8-47.7)
2000-2004	50.7	(50.3-51.0)	53.9	(51.8-56.0)	53.0	(51.8-54.1)	51.0	(49.5-52.5)
2005-2009	55.4	(55.0-55.7)	56.9	(55.0-58.8)	56.1	(55.0-57.2)	52.6	(51.2-54.0)
2010-2014	58.9	(58.5-59.3)	62.5	(60.4-64.5)	59.7	(58.5-60.9)	56.7	(55.2-58.3)
abs change*	12.4		9.6		9.7		10.4	
Rectum								
1995-1999	47.6	(47.0-48.2)	47.4	(43.9-50.8)	49.7	(47.8-51.6)	49.0	(46.5-51.4)
2000-2004	53.0	(52.4-53.5)	50.8	(47.5-54.1)	55.4	(53.6-57.2)	51.2	(48.9-53.5)
2005-2009	56.9	(56.4-57.5)	55.8	(52.6-58.9)	58.3	(56.5-60.0)	57.4	(55.2-59.6)
2010-2014	62.2	(61.5-62.8)	60.6	(57.1-63.9)	62.9	(60.9-64.8)	60.8	(58.4-63.1)
abs change*	14.6		13.2		13.2		11.8	
Pancreas								
1995-1999	3.2	(2.9-3.5)	2.8	(1.5-4.7)	3.5	(2.8-4.4)	4.2	(3.2-5.4)
2000-2004	4.1	(3.8-4.4)	2.5	(1.4-4.3)	3.4	(2.7-4.3)	4.8	(3.7-6.0)
2005-2009	5.7	(5.4-6.0)	5.7	(4.1-7.7)	4.0	(3.2-4.9)	4.8	(3.8-6.0)
2010-2014	8.1	(7.7-8.5)	6.7	(4.8-9.1)	7.1	(5.9-8.4)	7.4	(5.9-9.2)
abs change*	4.9		3.9		3.6		3.2	
Lung								
1995-1999	7.0	(6.9-7.2)	9.4	(8.4-10.5)	7.4	(7.0-7.8)	8.3	(7.6-9.1)
2000-2004	8.3	(8.1-8.5)	10.2	(9.1-11.3)	8.1	(7.6-8.5)	8.3	(7.6-9.0)
2005-2009	10.0	(9.8-10.2)	10.9	(9.9-12.0)	10.1	(9.6-10.6)	9.1	(8.4-9.8)
2010-2014	15.0	(14.7-15.2)	13.5	(12.2-14.8)	14.1	(13.5-14.8)	14.0	(12.9-15.0)
abs change*	8.0		4.1		6.7		5.7	
Ovary								
1995-1999	26.8	(26.2-27.4)	32.8	(28.9-36.7)	30.1	(28.2-31.9)	29.1	(26.8-31.4)
2000-2004	29.1	(28.5-29.7)	29.6	(26.2-33.1)	27.0	(25.3-28.8)	30.7	(28.4-33.1)
2005-2009	32.5	(31.9-33.1)	32.1	(28.7-35.6)	29.9	(28.1-31.8)	30.7	(28.3-33.1)
2010-2014	37.8	(37.0-38.5)	34.9	(30.9-38.9)	33.5	(31.3-35.7)	34.9	(32.2-37.7)
abs change*	11.0		2.1		3.4		5.8	

* Absolute change between 1995-1999 and 2010-2014, † New South Wales (1995-2012), ‡ Ireland (1995-2013)

Table S6. Age-standardized 1-year net survival (in %) and 95% confidence intervals by cancer site, country and period of diagnosis, including DCO cases

	Australia [†]		Canada [‡]		Denmark		Ireland [¶]		New Zealand		Norway		UK	
Oesophagus														
1995-1999	42.4	(40.5-44.2)	37.9	(36.5-39.4)	26.9	(24.6-29.2)	30.3	(27.8-32.8)	29.3	(26.2-32.5)	27.6	(24.4-31.0)	29.5	(29.0-30.1)
2000-2004	43.3	(41.6-45.0)	39.2	(37.9-40.6)	29.5	(27.3-31.7)	36.2	(33.7-38.6)	34.8	(31.7-37.8)	33.3	(30.0-36.7)	36.1	(35.6-36.7)
2005-2009	47.2	(45.6-48.8)	40.3	(39.0-41.6)	33.6	(31.4-35.8)	43.2	(40.8-45.6)	39.9	(36.9-42.7)	40.8	(37.6-44.0)	41.0	(40.5-41.5)
2010-2014	51.6	(49.3-53.8)	43.1	(41.6-44.6)	44.4	(41.4-47.4)	49.7	(46.3-52.9)	43.9	(40.6-47.2)	46.9	(43.5-50.2)	46.1	(45.4-46.7)
abs change*	9.2		5.2		17.5		19.4		14.6		19.3		16.6	
Stomach														
1995-1999	50.2	(48.9-51.4)	44.5	(43.5-45.5)	36.3	(34.4-38.3)	32.4	(30.4-34.4)	39.8	(37.5-42.0)	42.5	(40.5-44.4)	34.2	(33.7-34.7)
2000-2004	52.4	(51.1-53.7)	46.7	(45.7-47.7)	37.6	(35.6-39.6)	37.6	(35.6-39.7)	42.1	(39.8-44.4)	47.1	(45.1-49.1)	38.8	(38.3-39.3)
2005-2009	54.9	(53.6-56.1)	48.9	(48.0-49.9)	43.5	(41.6-45.5)	46.8	(44.7-48.8)	45.5	(43.2-47.9)	50.7	(48.6-52.8)	43.0	(42.4-43.5)
2010-2014	58.9	(57.3-60.6)	52.2	(51.0-53.4)	52.5	(50.1-54.8)	52.2	(49.4-54.9)	48.8	(46.0-51.6)	53.0	(50.4-55.5)	46.3	(45.5-47.0)
abs change*	8.7		7.7		16.2		19.8		9.0		10.5		12.1	
Colon														
1995-1999	78.4	(77.9-78.9)	76.9	(76.5-77.3)	70.7	(69.7-71.6)	69.1	(67.8-70.3)	75.9	(75.0-76.9)	75.8	(74.8-76.7)	66.9	(66.6-67.2)
2000-2004	81.2	(80.7-81.7)	79.7	(79.3-80.0)	72.8	(71.9-73.6)	70.9	(69.8-72.0)	77.9	(77.0-78.8)	77.2	(76.3-78.0)	70.1	(69.9-70.4)
2005-2009	83.9	(83.5-84.3)	82.0	(81.6-82.3)	75.8	(75.0-76.6)	77.8	(76.8-78.7)	78.6	(77.7-79.5)	79.7	(78.9-80.5)	73.2	(73.0-73.5)
2010-2014	86.3	(85.7-86.8)	82.8	(82.4-83.2)	82.5	(81.7-83.3)	80.2	(78.9-81.4)	80.7	(79.7-81.6)	82.0	(81.1-82.8)	76.4	(76.1-76.6)
abs change*	7.9		5.9		11.8		11.1		4.8		6.2		9.5	
Rectum														
1995-1999	82.2	(81.3-83.0)	82.5	(81.8-83.2)	75.4	(74.2-76.7)	72.6	(70.7-74.4)	79.1	(77.4-80.7)	80.9	(79.6-82.1)	72.4	(72.0-72.8)
2000-2004	85.5	(84.8-86.1)	84.3	(83.7-84.9)	78.9	(77.8-80.0)	75.4	(73.7-77.1)	82.2	(80.7-83.6)	82.6	(81.5-83.7)	76.7	(76.3-77.1)
2005-2009	87.5	(86.9-88.2)	85.8	(85.2-86.4)	82.6	(81.6-83.5)	81.3	(79.7-82.7)	83.4	(82.1-84.7)	85.8	(84.7-86.8)	79.9	(79.6-80.3)
2010-2014	89.3	(88.4-90.1)	86.2	(85.5-86.9)	87.6	(86.5-88.5)	86.2	(84.3-87.9)	85.6	(84.1-86.9)	88.9	(87.7-90.0)	84.3	(83.9-84.7)
abs change*	7.1		3.7		12.2		13.6		6.5		8.0		11.9	
Pancreas														
1995-1999	21.1	(19.9-22.3)	19.5	(18.7-20.4)	14.3	(13.0-15.7)	13.2	(11.4-15.1)	19.2	(17.2-21.3)	15.6	(14.1-17.3)	13.4	(13.0-13.8)
2000-2004	25.9	(24.8-27.1)	23.1	(22.3-23.9)	17.5	(16.2-18.8)	17.1	(15.2-19.1)	19.0	(17.1-21.1)	18.8	(17.2-20.4)	16.0	(15.6-16.5)
2005-2009	29.2	(28.1-30.2)	25.9	(25.1-26.7)	21.7	(20.4-23.1)	22.8	(20.9-24.7)	19.9	(18.1-21.8)	24.8	(23.2-26.5)	20.6	(20.2-21.1)
2010-2014	39.5	(38.0-40.9)	31.0	(30.1-32.0)	30.8	(29.1-32.6)	31.0	(28.1-34.0)	24.6	(22.5-26.7)	30.1	(28.2-32.1)	25.7	(25.2-26.3)
abs change*	18.4		11.5		16.5		17.8		5.4		14.5		12.3	
Lung														
1995-1999	37.3	(36.7-38.0)	37.5	(37.1-37.9)	27.2	(26.5-28.0)	24.6	(23.6-25.7)	30.3	(29.2-31.4)	31.2	(30.2-32.2)	23.7	(23.5-23.9)
2000-2004	39.7	(39.1-40.4)	39.1	(38.7-39.5)	33.2	(32.5-34.0)	27.7	(26.6-28.7)	31.2	(30.2-32.3)	33.5	(32.5-34.4)	27.4	(27.2-27.7)
2005-2009	43.0	(42.4-43.6)	41.6	(41.2-42.0)	36.2	(35.5-37.0)	34.0	(33.0-35.0)	32.6	(31.5-33.6)	39.9	(39.0-40.9)	31.0	(30.7-31.2)
2010-2014	48.2	(47.4-49.0)	46.5	(46.0-46.9)	45.9	(45.0-46.9)	44.8	(43.4-46.2)	39.4	(38.1-40.6)	46.0	(44.9-47.2)	38.4	(38.1-38.7)
abs change*	10.9		9.0		18.7		20.2		9.1		14.8		14.7	
Ovary														
1995-1999	69.8	(68.2-71.3)	69.1	(68.1-70.2)	63.5	(61.5-65.4)	55.0	(52.2-57.7)	60.6	(57.6-63.5)	70.1	(68.1-72.1)	54.8	(54.3-55.4)
2000-2004	72.2	(70.8-73.6)	70.9	(69.9-71.9)	68.5	(66.6-70.3)	58.4	(55.8-60.9)	63.1	(60.2-65.8)	74.9	(73.1-76.7)	58.9	(58.3-59.4)
2005-2009	74.0	(72.7-75.3)	72.1	(71.2-73.1)	72.4	(70.6-74.1)	63.1	(60.6-65.5)	64.6	(62.0-67.2)	75.2	(73.3-77.0)	63.4	(62.9-64.0)
2010-2014	77.4	(75.6-79.1)	71.8	(70.6-72.9)	76.9	(74.9-78.9)	69.2	(65.8-72.3)	71.2	(68.1-74.0)	76.6	(74.2-78.7)	69.4	(68.7-70.0)
abs change*	7.6		2.7		13.4		14.2		10.6		6.5		14.6	

* Absolute change between 1995-1999 and 2010-2014

[†] Australia includes New South Wales (1995-2012), Victoria and Western Australia[‡] Canada includes Alberta, British Columbia, Manitoba, New Brunswick, Nova Scotia, Ontario, Prince Edward Island and Saskatchewan[¶] Ireland (1995-2013)

Table S7. Age-standardized 5-year net survival (in %) and 95% confidence intervals by cancer site, country and period of diagnosis, including DCO cases

	Australia [†]		Canada [‡]		Denmark		Ireland [¶]		New Zealand		Norway		UK	
Oesophagus														
1995-1999	18.2	(16.8-19.8)	13.3	(12.2-14.5)	5.1	(3.9-6.6)	10.7	(9.0-12.7)	13.5	(11.1-16.1)	8.6	(6.6-10.9)	8.5	(8.2-8.9)
2000-2004	17.6	(16.3-19.0)	14.1	(13.0-15.1)	8.5	(7.2-10.1)	12.7	(10.9-14.6)	11.5	(9.5-13.8)	9.0	(6.7-11.6)	11.3	(10.9-11.7)
2005-2009	18.3	(17.0-19.7)	14.6	(13.6-15.6)	10.5	(9.0-12.0)	17.1	(15.2-19.1)	14.2	(12.1-16.5)	13.1	(10.8-15.7)	13.7	(13.3-14.1)
2010-2014	23.3	(21.5-25.2)	16.1	(14.9-17.3)	14.7	(12.1-17.5)	21.8	(19.2-24.4)	16.9	(14.3-19.7)	19.2	(16.3-22.3)	16.1	(15.6-16.6)
abs change*	5.1		2.8		9.6		11.1		3.4		10.6		7.6	
Stomach														
1995-1999	25.6	(24.4-26.8)	21.2	(20.3-22.1)	14.0	(12.4-15.6)	16.8	(15.1-18.6)	21.1	(19.1-23.2)	21.2	(19.4-22.9)	13.9	(13.5-14.3)
2000-2004	27.9	(26.7-29.1)	23.9	(22.9-24.8)	15.2	(13.6-16.8)	18.2	(16.4-20.0)	23.6	(21.5-25.8)	21.9	(20.1-23.8)	15.9	(15.4-16.3)
2005-2009	29.0	(27.8-30.2)	25.9	(25.0-26.9)	15.7	(14.2-17.3)	21.9	(20.0-23.7)	23.9	(21.7-26.1)	25.0	(23.0-27.1)	18.8	(18.3-19.3)
2010-2014	32.6	(31.0-34.1)	29.5	(28.4-30.7)	22.6	(20.6-24.8)	28.4	(26.0-30.8)	24.4	(22.0-26.9)	26.7	(24.4-29.1)	20.6	(20.0-21.2)
abs change*	7.0		8.3		8.6		11.6		3.3		5.5		6.7	
Colon														
1995-1999	59.2	(58.5-59.9)	57.4	(56.8-57.9)	48.9	(47.7-50.1)	48.7	(47.1-50.2)	59.0	(57.7-60.2)	55.3	(54.0-56.5)	46.5	(46.1-46.8)
2000-2004	63.0	(62.3-63.7)	60.7	(60.2-61.3)	53.1	(51.9-54.2)	51.8	(50.4-53.3)	60.1	(58.9-61.3)	57.8	(56.7-59.0)	50.4	(50.0-50.7)
2005-2009	66.6	(66.0-67.2)	64.9	(64.4-65.4)	57.4	(56.3-58.5)	57.7	(56.3-59.0)	61.2	(60.0-62.4)	61.9	(60.8-63.0)	54.7	(54.4-55.1)
2010-2014	70.2	(69.4-70.9)	66.3	(65.8-66.9)	65.5	(64.2-66.7)	61.4	(59.8-62.9)	62.0	(60.6-63.3)	64.8	(63.6-66.0)	58.5	(58.1-58.8)
abs change*	11.0		8.9		16.6		12.7		3.0		9.5		12.0	
Rectum														
1995-1999	58.9	(57.6-60.0)	57.1	(56.1-58.2)	48.0	(46.3-49.7)	47.0	(44.6-49.4)	56.0	(53.7-58.3)	57.2	(55.3-58.9)	47.5	(46.9-48.0)
2000-2004	63.8	(62.7-64.9)	61.2	(60.3-62.2)	53.9	(52.2-55.6)	50.8	(48.5-52.9)	59.5	(57.3-61.6)	61.5	(59.7-63.1)	52.6	(52.0-53.1)
2005-2009	68.3	(67.2-69.3)	65.0	(64.2-65.9)	60.6	(59.2-62.1)	56.9	(54.7-59.0)	62.1	(60.1-64.1)	65.2	(63.6-66.9)	56.6	(56.1-57.2)
2010-2014	70.6	(69.4-71.8)	66.8	(65.8-67.8)	69.1	(67.4-70.7)	62.1	(59.6-64.6)	65.1	(62.8-67.3)	68.6	(66.8-70.4)	61.8	(61.2-62.3)
abs change*	11.7		9.7		21.1		15.1		9.1		11.4		14.3	
Pancreas														
1995-1999	6.3	(5.6-7.1)	6.8	(6.2-7.3)	3.1	(2.5-3.9)	5.4	(4.2-6.8)	8.7	(7.1-10.4)	4.4	(3.5-5.5)	3.2	(3.0-3.4)
2000-2004	7.6	(6.9-8.4)	7.6	(7.1-8.2)	3.8	(3.1-4.6)	5.7	(4.5-7.1)	6.9	(5.5-8.4)	4.6	(3.8-5.6)	3.9	(3.6-4.1)
2005-2009	9.1	(8.3-9.8)	9.4	(8.8-10.0)	5.7	(4.9-6.5)	6.9	(5.7-8.2)	7.2	(6.0-8.5)	5.8	(4.8-6.8)	5.4	(5.1-5.7)
2010-2014	14.4	(13.3-15.5)	11.0	(10.3-11.7)	9.6	(8.5-10.8)	9.5	(7.7-11.5)	8.1	(6.8-9.6)	9.8	(8.5-11.3)	7.8	(7.4-8.2)
abs change*	8.1		4.2		6.5		4.1		-0.6		5.4		4.6	
Lung														
1995-1999	13.2	(12.7-13.7)	15.1	(14.8-15.4)	8.1	(7.6-8.6)	9.0	(8.3-9.8)	11.4	(10.6-12.2)	10.7	(10.0-11.5)	7.1	(6.9-7.2)
2000-2004	14.7	(14.2-15.2)	15.7	(15.4-16.1)	9.7	(9.1-10.2)	9.9	(9.2-10.7)	10.8	(10.0-11.5)	11.8	(11.1-12.5)	8.2	(8.0-8.3)
2005-2009	17.0	(16.6-17.5)	18.2	(17.9-18.5)	12.4	(11.8-12.9)	13.3	(12.5-14.1)	11.7	(11.0-12.5)	15.3	(14.5-16.0)	9.8	(9.7-10.0)
2010-2014	21.1	(20.5-21.8)	21.5	(21.1-22.0)	18.7	(18.0-19.5)	19.7	(18.6-20.8)	15.4	(14.4-16.4)	20.1	(19.2-21.1)	14.6	(14.4-14.8)
abs change*	7.9		6.4		10.6		10.7		4.0		9.4		7.5	
Ovary														
1995-1999	35.3	(33.7-36.9)	35.1	(34.0-36.3)	31.8	(29.9-33.8)	27.3	(24.8-29.8)	31.8	(28.9-34.7)	36.8	(34.6-39.0)	27.0	(26.5-27.6)
2000-2004	35.9	(34.4-37.5)	36.0	(34.9-37.1)	34.1	(32.2-36.0)	29.1	(26.8-31.5)	33.2	(30.4-36.0)	40.5	(38.3-42.6)	28.5	(28.0-29.0)
2005-2009	39.7	(38.1-41.2)	39.4	(38.4-40.5)	38.2	(36.2-40.2)	30.8	(28.5-33.3)	32.5	(29.8-35.2)	41.0	(38.8-43.1)	31.7	(31.2-32.3)
2010-2014	42.7	(40.9-44.6)	40.0	(38.7-41.2)	41.9	(39.6-44.3)	35.8	(32.9-38.8)	36.2	(33.1-39.2)	45.7	(43.1-48.2)	36.7	(36.1-37.4)
abs change*	7.4		4.9		10.1		8.5		4.4		8.9		9.7	

* Absolute change between 1995-1999 and 2010-2014

[†] Australia includes New South Wales (1995-2012), Victoria and Western Australia

[‡] Canada includes Alberta, British Columbia, Manitoba, New Brunswick, Nova Scotia, Ontario, Prince Edward Island and Saskatchewan

[¶] Ireland (1995-2013)

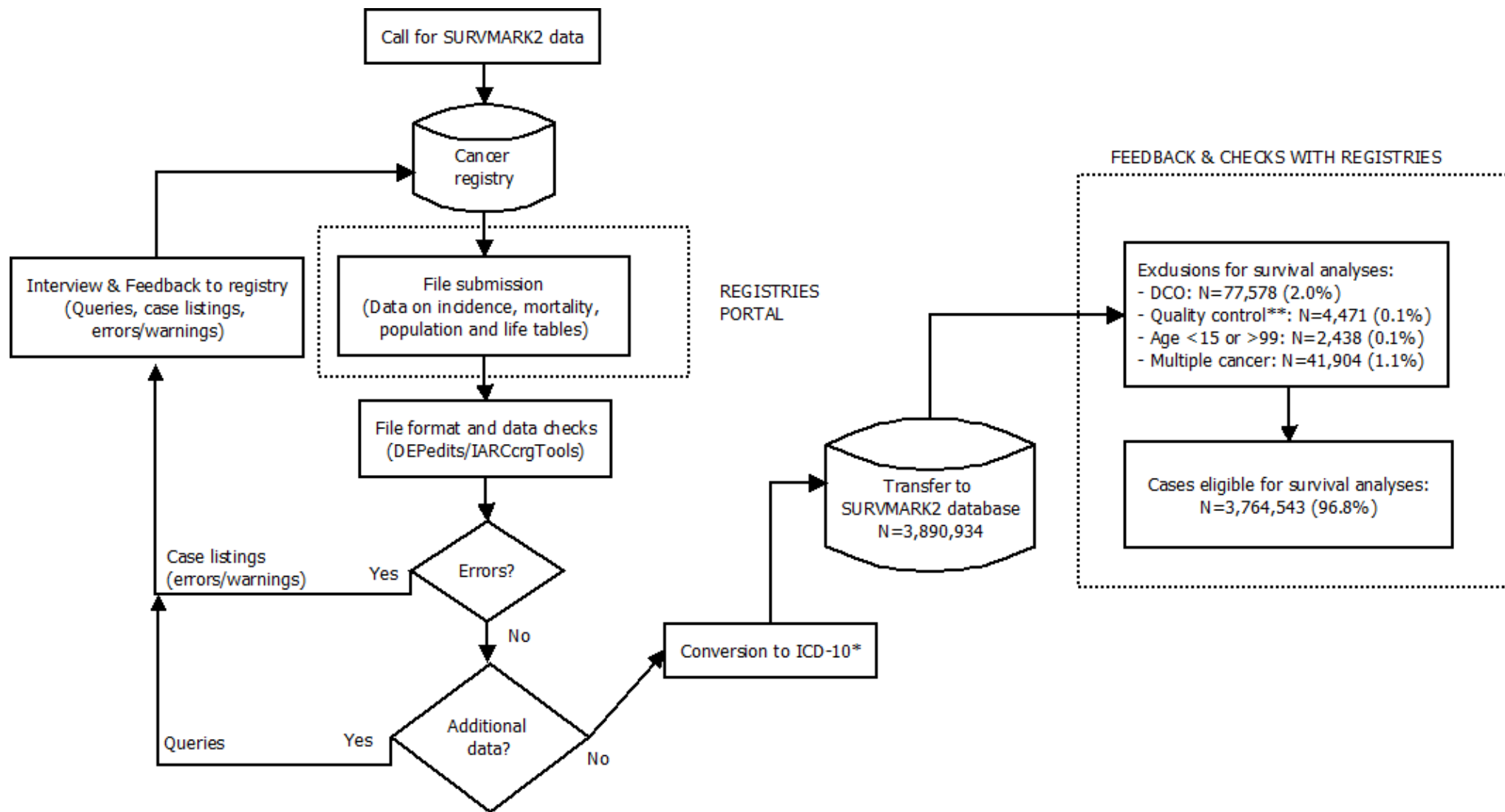


Figure S1. Overall flow of data, processing steps and exclusions in SURVMARK-2

*where applicable

**includes invalid and missing dates, invalid age and tumours of non-malignant behaviour

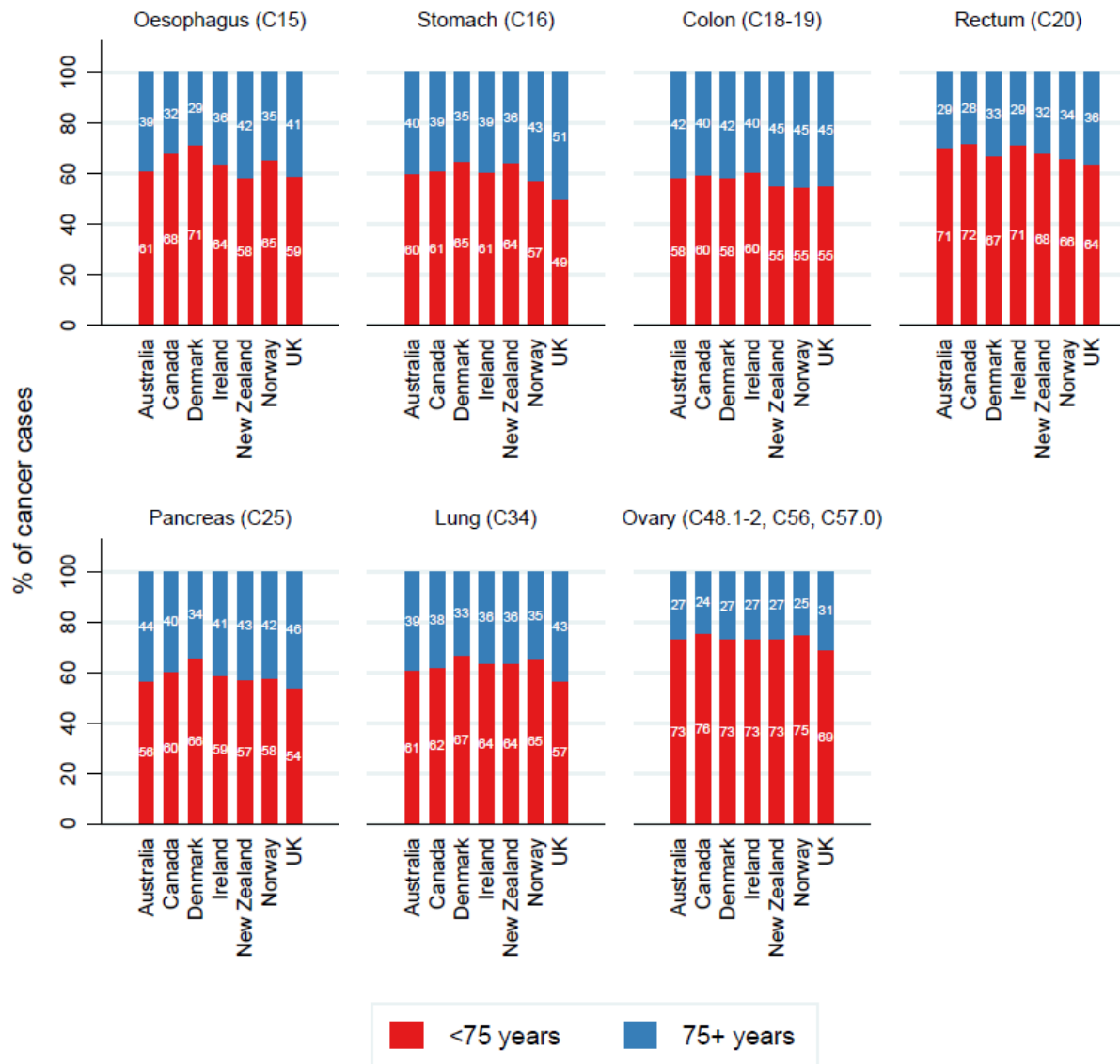
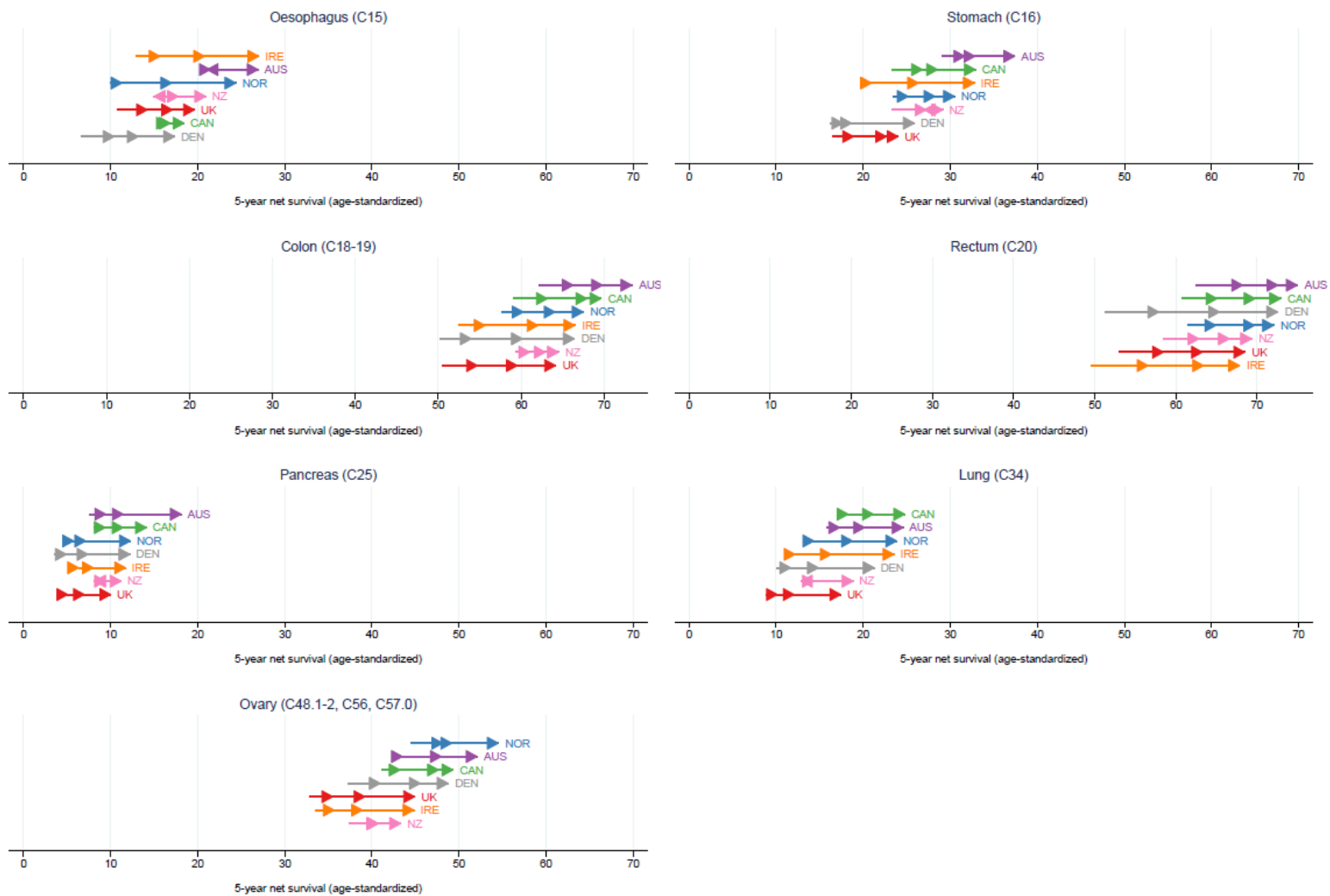


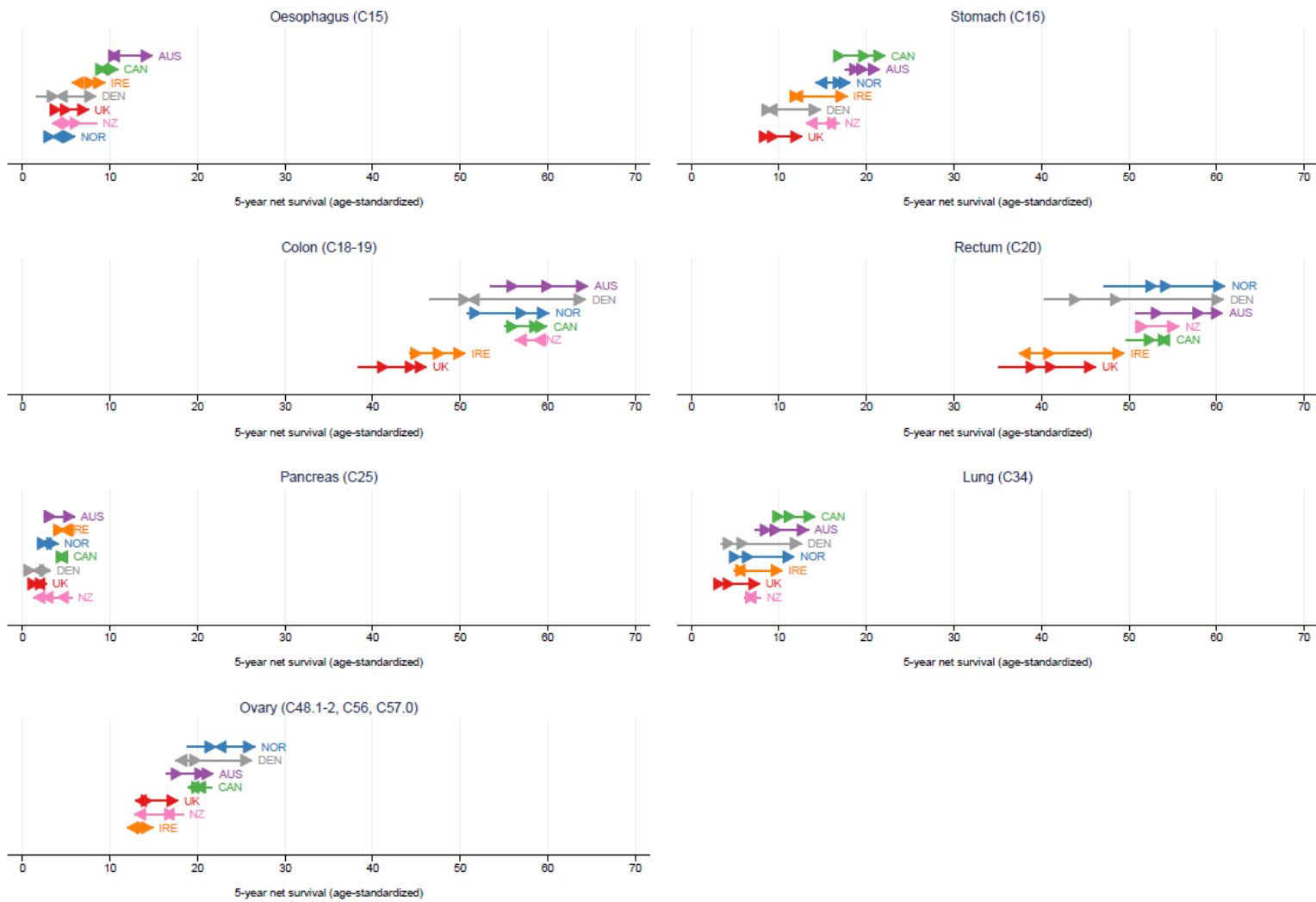
Figure S2. Case distribution by cancer site, age group and country in patients diagnosed 2010-2014



Beginning of arrow denotes estimates for 1995-1999, arrow heads from left to right refer to 2000-2004, 2005-2009 and 2010-2014 estimates

Figure S3. Age-standardized 5-year net survival by site, country* and period of diagnosis in patients aged below 75 years diagnosed 1995-2014

*Australia includes New South Wales (1995-2012), Victoria and Western Australia; Canada includes Alberta, British Columbia, Manitoba, New Brunswick, Nova Scotia, Ontario, Prince Edward Island and Saskatchewan; Ireland (1995-2013); all other countries with national data (1995-2014)



Beginning of arrow denotes estimates for 1995-1999, arrow heads from left to right refer to 2000-2004, 2005-2009 and 2010-2014 estimates

Figure S4. 5-year net survival by site, country* and period of diagnosis in patients aged 75 years and above diagnosed 1995-2014

*Australia includes New South Wales (1995-2012), Victoria and Western Australia; Canada includes Alberta, British Columbia, Manitoba, New Brunswick, Nova Scotia, Ontario, Prince Edward Island and Saskatchewan; Ireland (1995-2013); all other countries with national data (1995-2014)

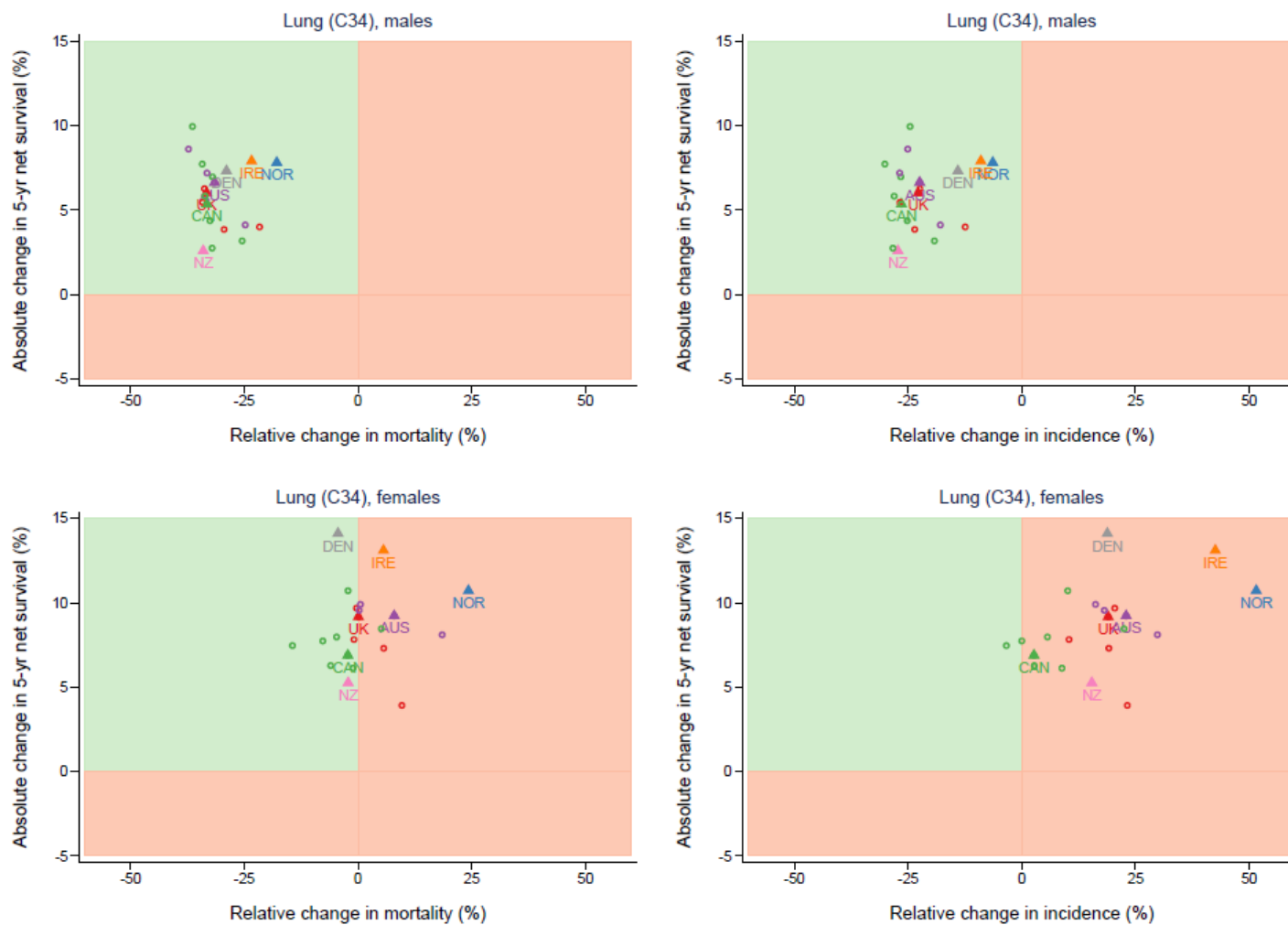


Figure S5. Changes in age-standardised 5-year net survival, mortality and incidence for lung cancer, by sex (comparing 2010-2014 to 1995-1999) (circles=jurisdictions; triangles=countries)

Mortality data includes cancers of the trachea and lung (C33-34)

Australia includes New South Wales (1995-2012), Victoria and Western Australia; Canada includes Alberta, British Columbia, Manitoba, New Brunswick, Nova Scotia, Ontario, Prince Edward Island and Saskatchewan; Ireland (1995-2013); all other countries with national data (1995-2014)

Estimates for Prince Edward Island (Canada) are not shown.

Age-standardised net survival is for ages 15-99; age-standardized incidence and mortality rates are for ages 25+

Oesophagus (C15)

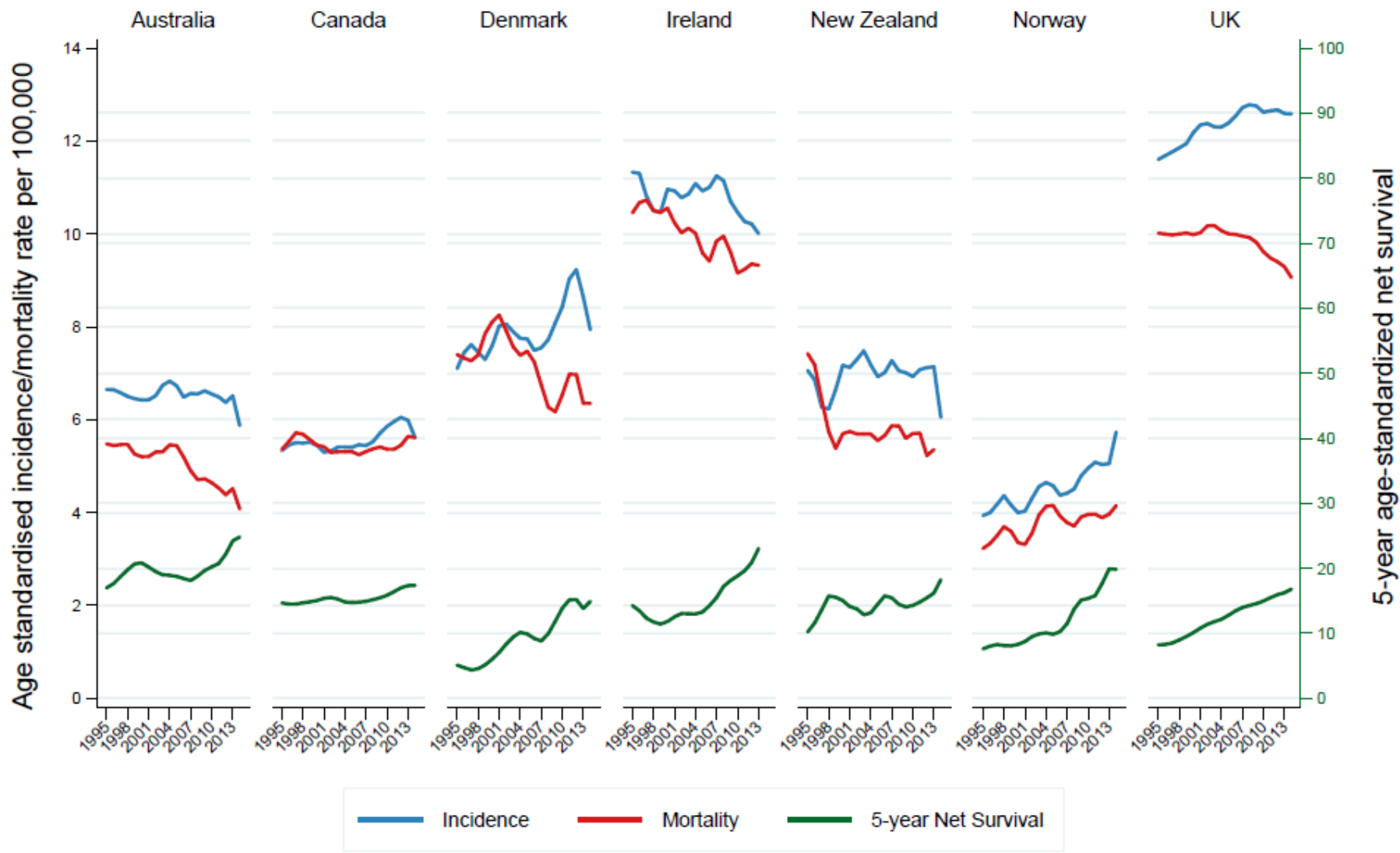


Figure S6A. Annual trends in age-standardised incidence and mortality rates and in 5-year age-standardized net survival from oesophageal cancer by country 1995-2014

Age-standardised net survival is for ages 15-99; age-standardized incidence and mortality rates are for ages 25+

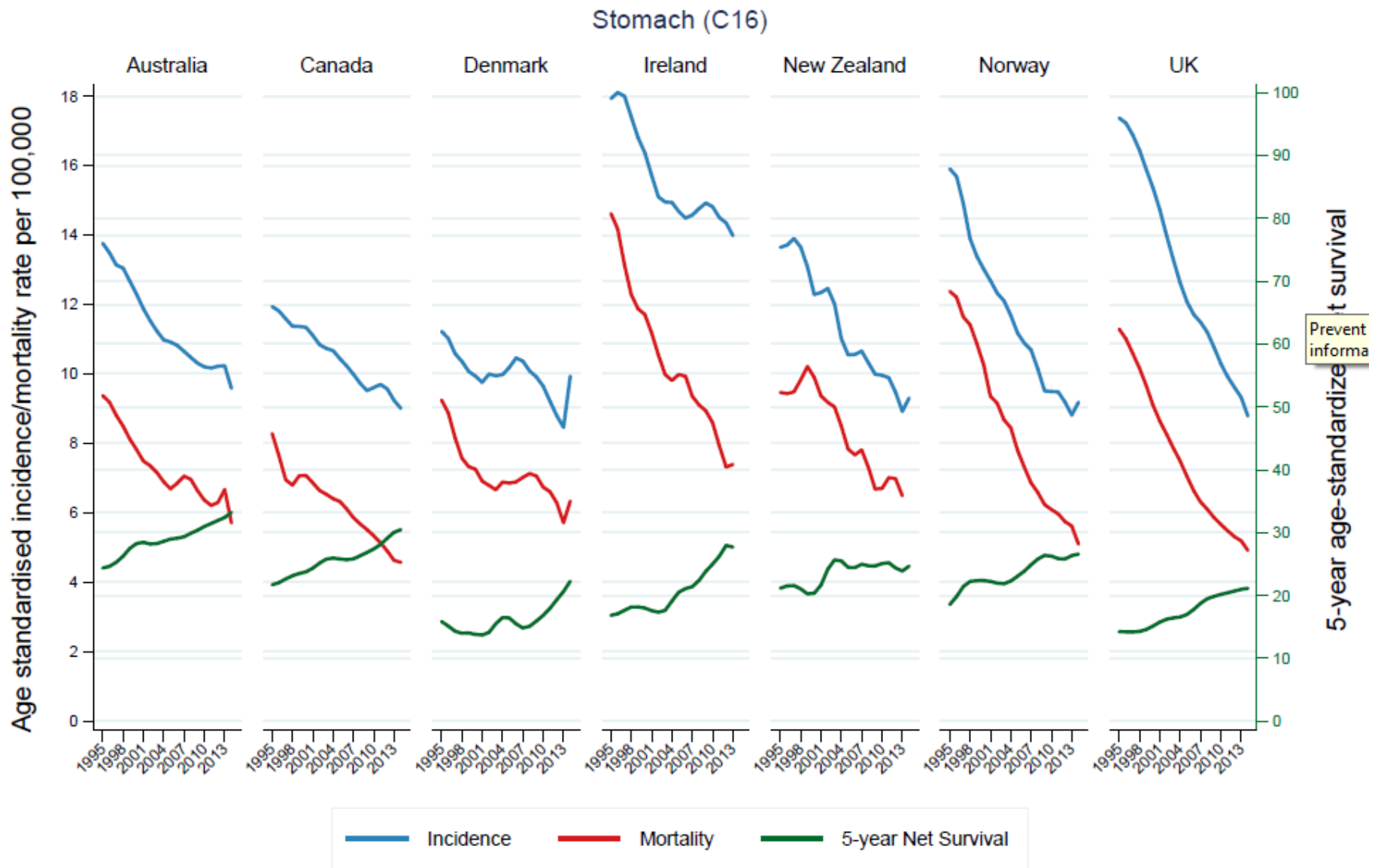


Figure S6B. Annual trends in age-standardised incidence and mortality rates and in 5-year age-standardized net survival from stomach cancer by country 1995-2014

Age-standardised net survival is for ages 15-99; age-standardized incidence and mortality rates are for ages 25+

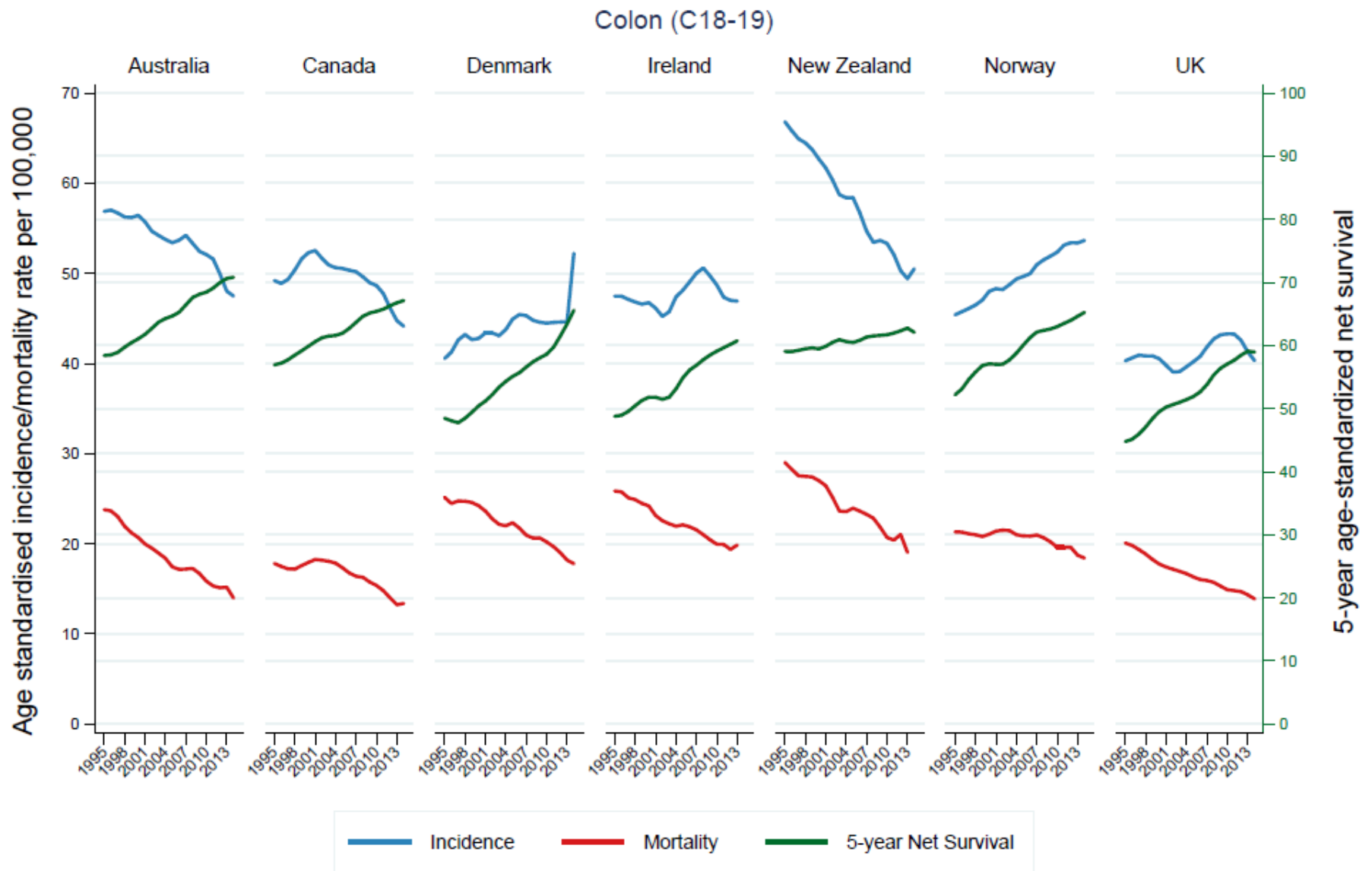


Figure S6C. Annual trends in age-standardised incidence and mortality rates and in 5-year age-standardized net survival from colon cancer by country 1995-2014

Age-standardised net survival is for ages 15-99; age-standardized incidence and mortality rates are for ages 25+

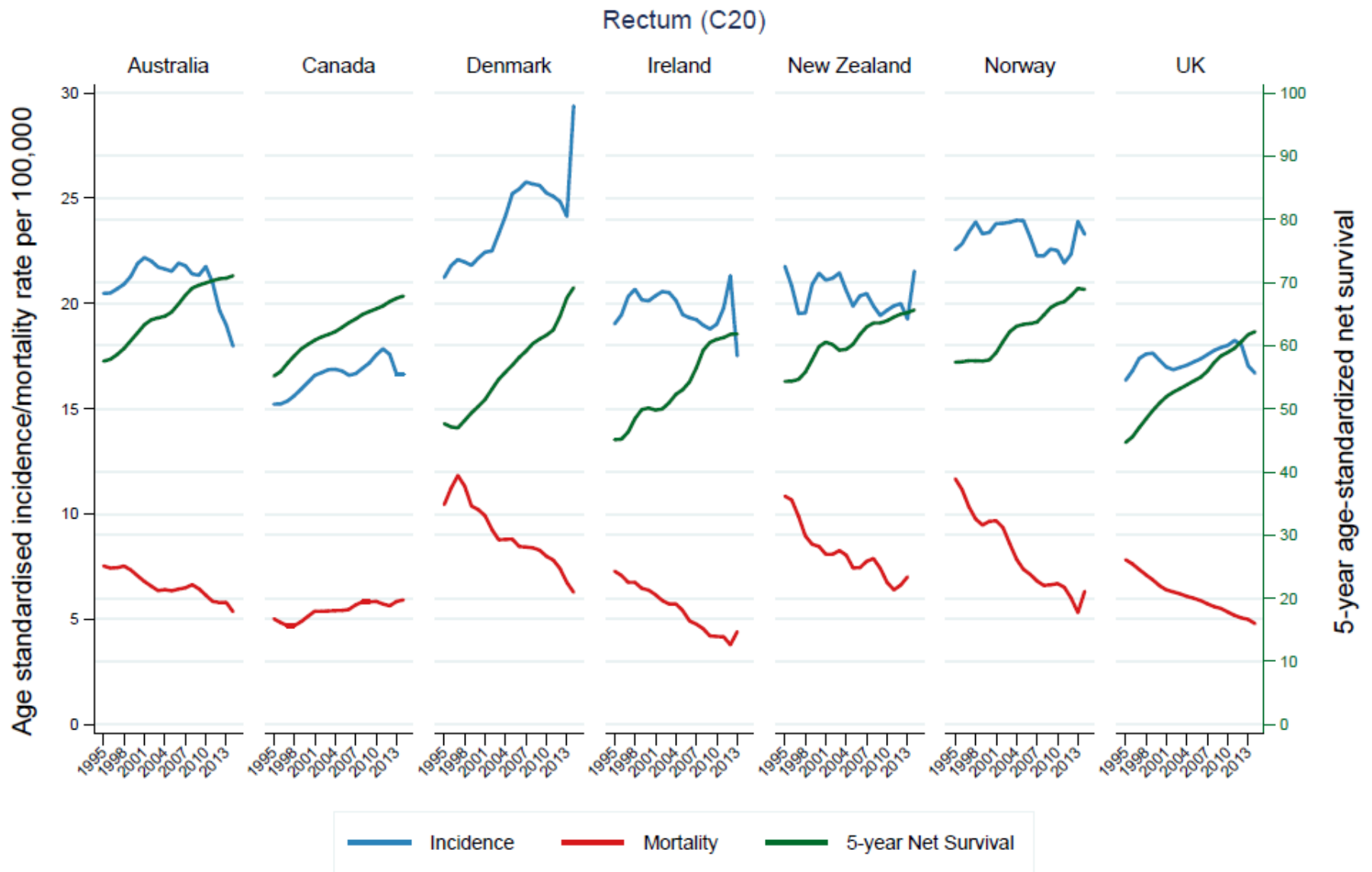


Figure S6D. Annual trends in age-standardised incidence and mortality rates and in 5-year age-standardized net survival from rectal cancer by country 1995-2014

Age-standardised net survival is for ages 15-99; age-standardized incidence and mortality rates are for ages 25+

Pancreas (C25)

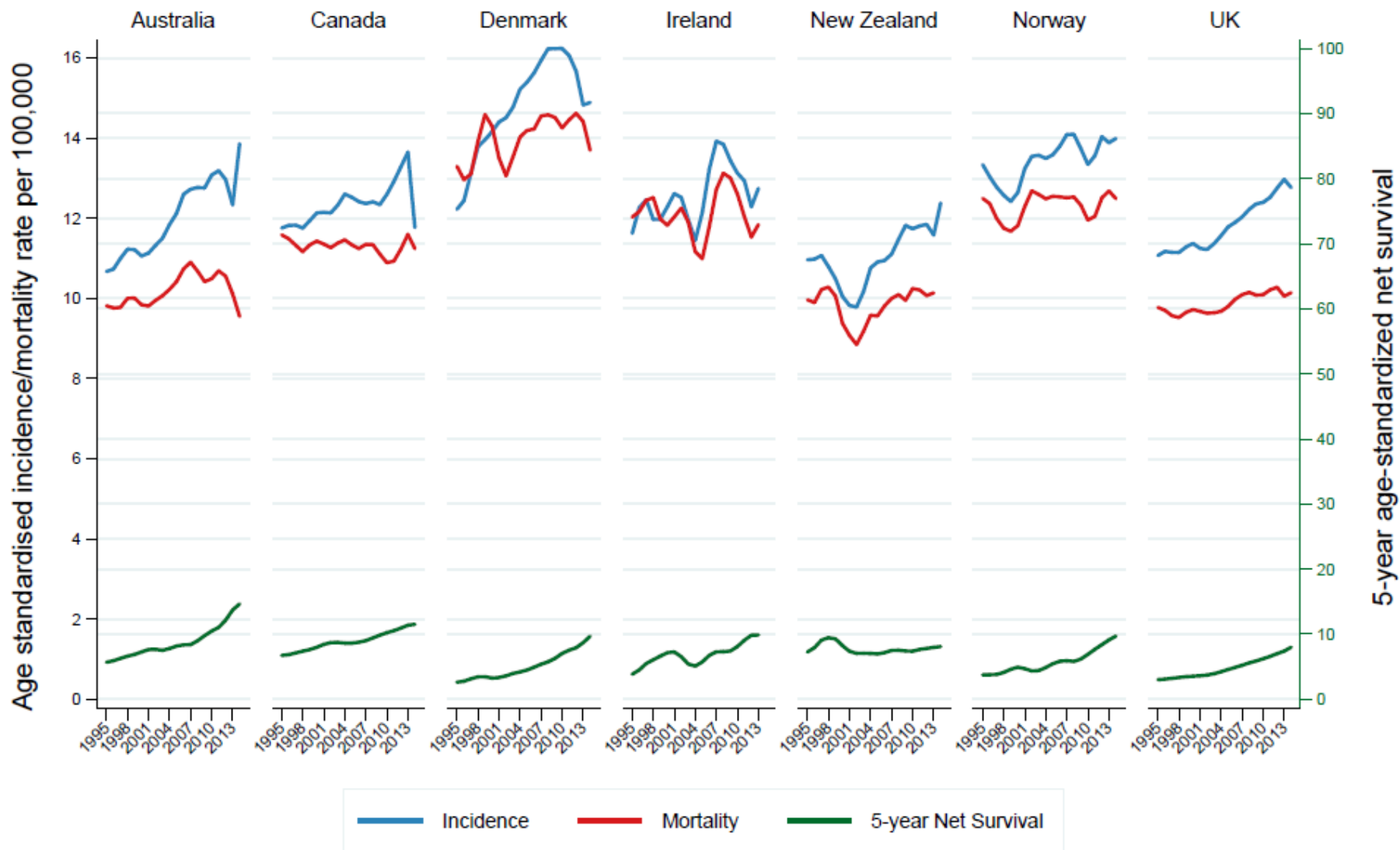


Figure S6E. Annual trends in age-standardised incidence and mortality rates and in 5-year age-standardized net survival from pancreatic cancer by country 1995-2014

Age-standardised net survival is for ages 15-99; age-standardized incidence and mortality rates are for ages 25+

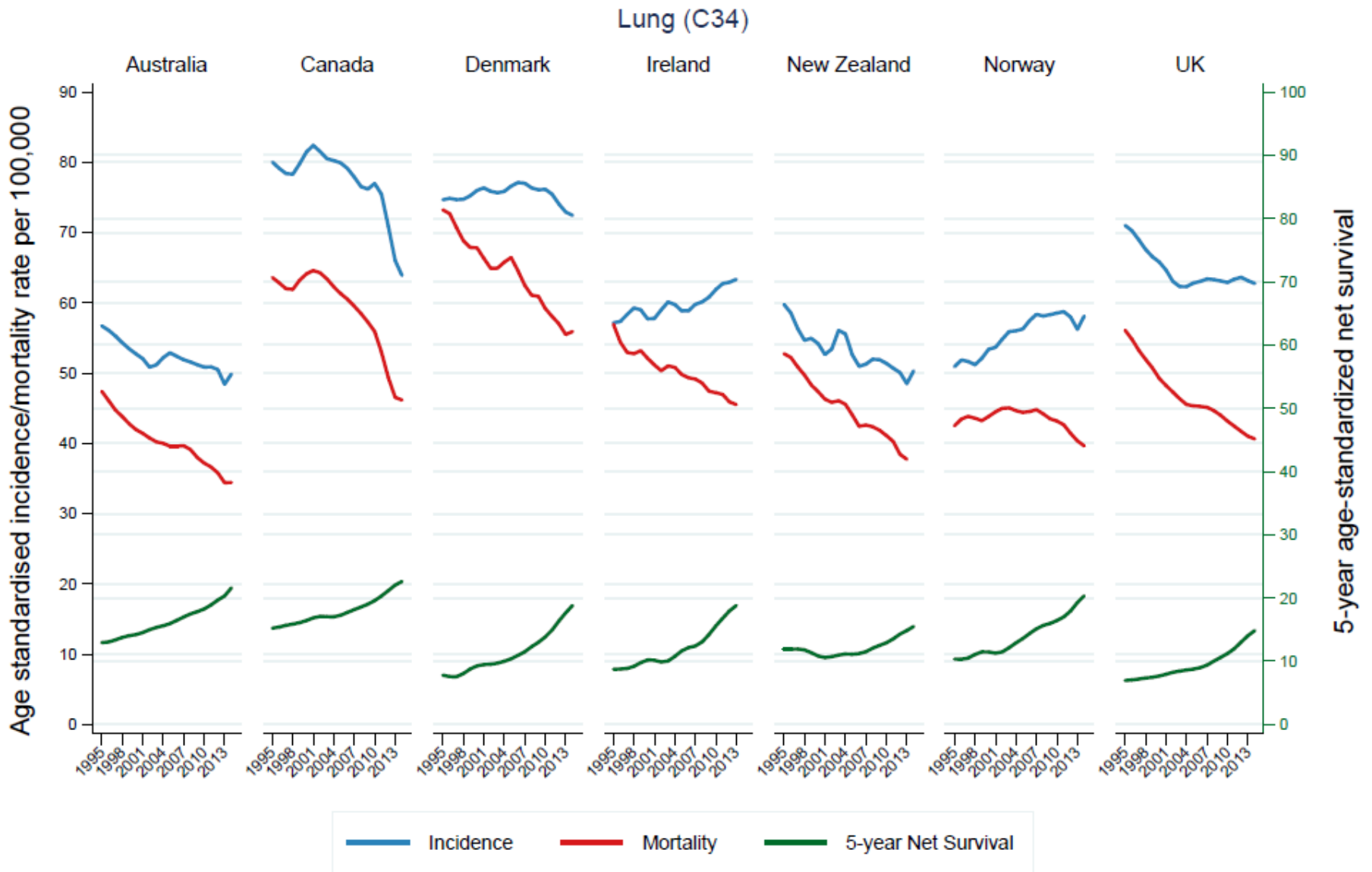


Figure S6F. Annual trends in age-standardised incidence and mortality rates and in 5-year age-standardized net survival from lung cancer by country 1995-2014

**Mortality data includes cancers of the trachea and lung (C33-34)*

Age-standardised net survival is for ages 15-99; age-standardized incidence and mortality rates are for ages 25+

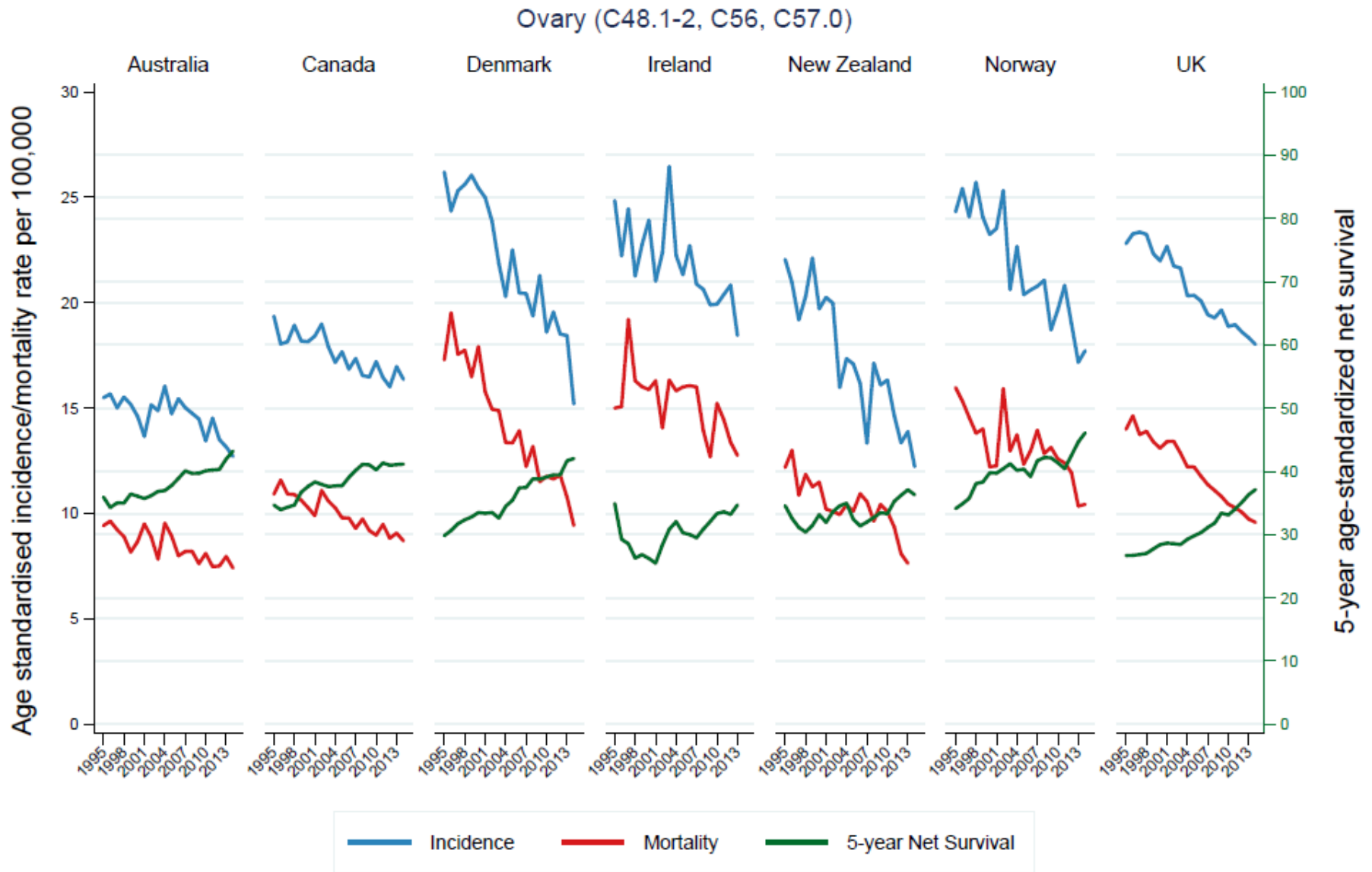


Figure S6G. Annual trends in age-standardised incidence and mortality rates and in 5-year age-standardized net survival from ovarian cancer by country 1995-2014

**Incidence and mortality data include only C56*

Age-standardised net survival is for ages 15-99; age-standardized incidence and mortality rates are for ages 25+