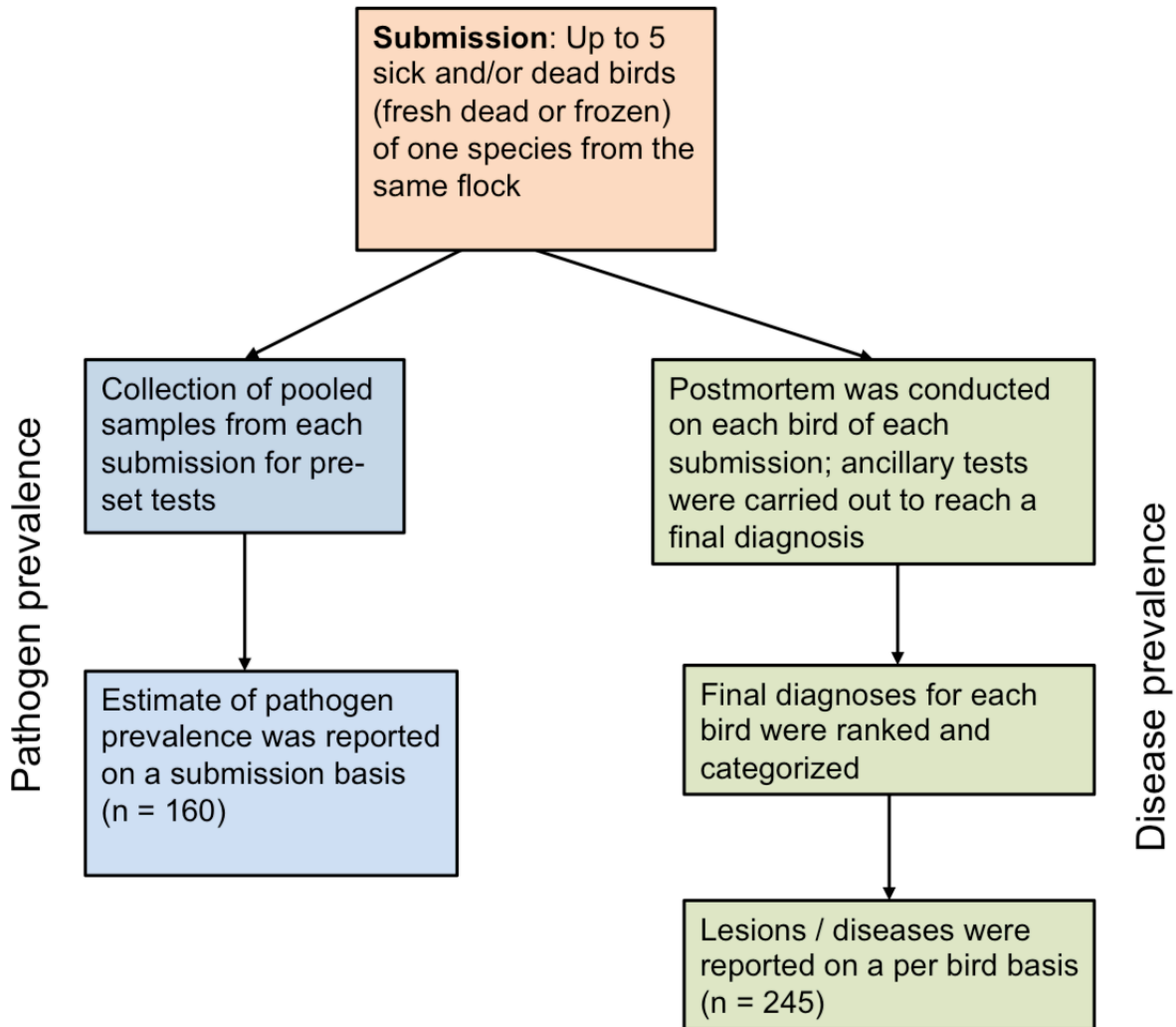


Brochu et al. A two-year prospective study of small poultry flocks in Ontario, Canada, part 1: prevalence of viral and bacterial pathogens



Supplementary Figure 1. Study design. Two sets of data were derived from each submission. Pre-set tests were conducted on pooled organs and/or swabs from each submission, in order to determine pathogen prevalence at the submission level, regardless of lesions or history. Full postmortem analysis was conducted on each bird in the submission, to evaluate the cause of

death and secondary lesions. Data from the postmortem analysis are reported at the individual bird level (morbidity and mortality).¹

Reference

1. Brochu NM, et al. A two-year prospective study of small poultry flocks in Ontario, Canada, part 2: causes of morbidity and mortality. *J Vet Diagn Invest* 2019;31(3).