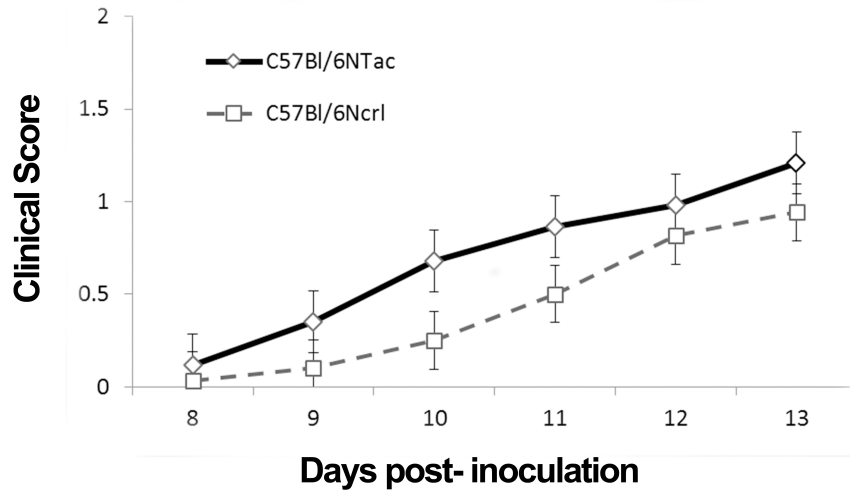


Additional Files



Additional file 1. Clinical scores at early EAE phase are comparable in C57Bl/6NTac and C57Bl/6Ncr1 mice

Clinical scores were evaluated in C57Bl/6NTac and C57Bl/6Ncr1 mice side-by-side, as described in Methods. The graph shows the scores at early disease phase. Mice were evaluated for pain when they manifested flaccid tail (clinical score 1).