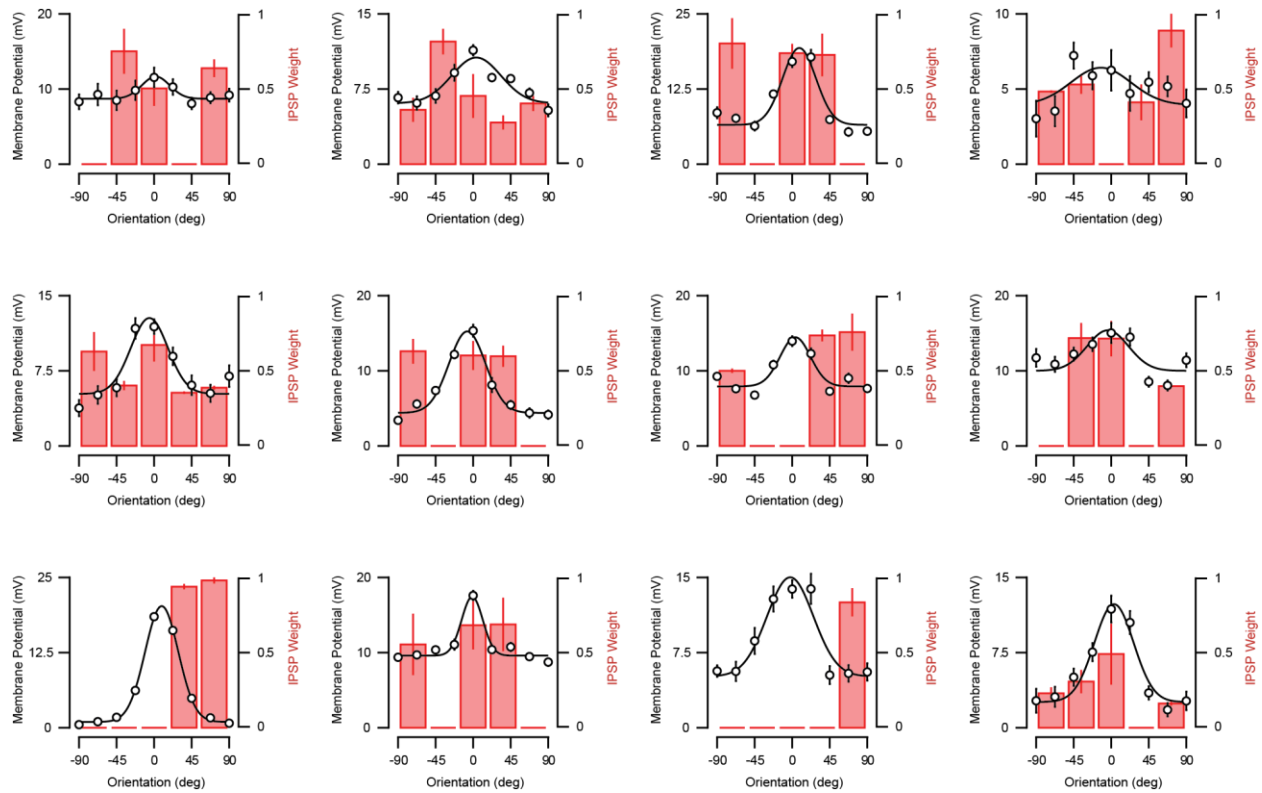


## **Supplemental Information**

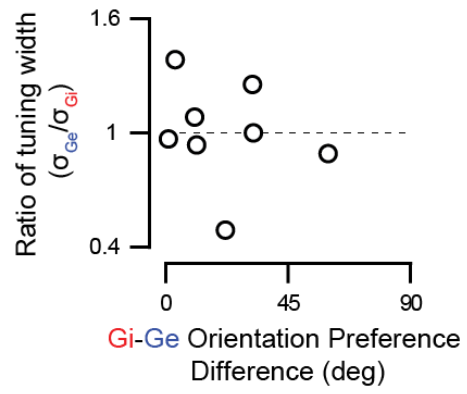
### **Functional logic of layer 2/3 inhibitory connectivity in ferret visual cortex**

Benjamin Scholl, Daniel E. Wilson, Juliane Jaepel and David Fitzpatrick



**Supplemental Figure 1 (related to Figure 2):  $V_m$  orientation tuning and IPSP weight of individual layer 2/3 cells.**

Shown are several additional examples of  $V_m$  orientation tuning and IPSP weight. IPSP weight calculated as the average inhibitory input, normalized by IPSP amplitude, relative to spot location in the orientation intrinsic map. Orientation preferences are aligned to the  $V_m$  preference. Orientation tuning data points are peak  $V_m$  responses. All data shown are mean and standard error.



**Supplemental Figure 2 (related to Figure 4): Synaptic conductance orientation preference difference compared to ratio of tuning width.** Shown is the absolute difference in orientation preference of excitation (Ge, blue) and inhibition (Gi, red) compared to the ratio of their tuning widths. Each point corresponds to data from a single recording.