

Supplementary Information

**Cryo-EM structures reveal coordinated domain motions that govern  
DNA cleavage by Cas9**

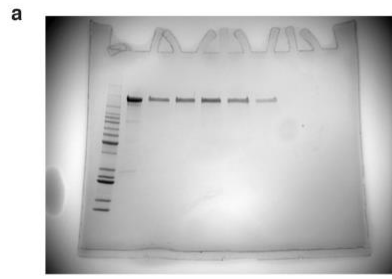
X. Zhu<sup>1,†</sup>, R. Clarke<sup>2,†</sup>, A. K. Puppala<sup>2,†</sup>, S. Chittori<sup>1</sup>, A. Merk<sup>1</sup>, B. J. Merrill<sup>2,3\*</sup>, M. Simonović<sup>2,\*</sup>  
and S. Subramaniam<sup>4,5,\*</sup>

\*Correspondence to: [merrillb@uic.edu](mailto:merrillb@uic.edu), [msimon5@uic.edu](mailto:msimon5@uic.edu), and [sriram.subramaniam@ubc.ca](mailto:sriram.subramaniam@ubc.ca)

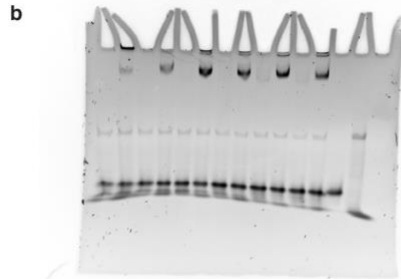
†These authors contributed equally to this work.

**This PDF file includes:**

Supplementary Data Set 1



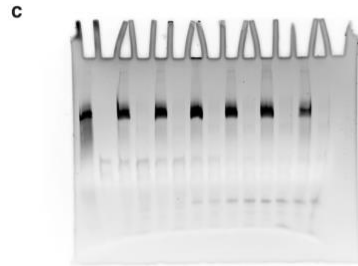
SDS-PAGE



EMSA - EtBr stained



EMSA - Coomassie stained



TBE-urea PAGE

**Supplementary Data Set 1. Uncropped gel images for Supplementary Fig. 3.**