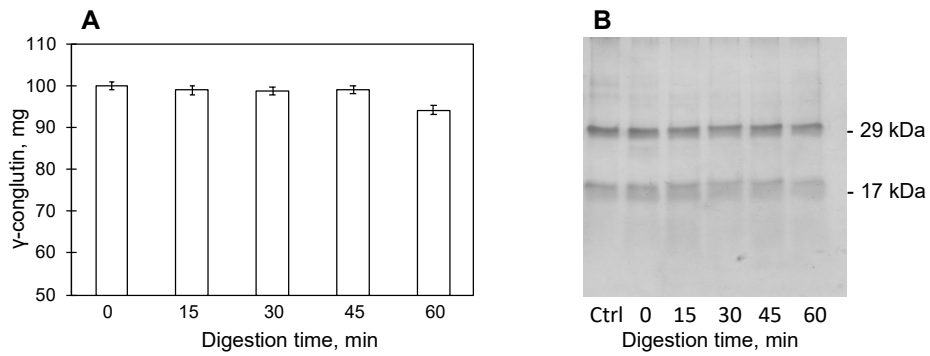


Supplementary Figure S1: Prediction of peptides toxicity calculated by using the ToxinPred method [31], available on-line at <http://crdd.osdd.net/raghava/toxinpred/>, using Uniprot KB:Q9FSH9 amino acid sequence of γ C as template.



Supplementary Figure S2. Panel A: native γ C incubated with trypsin for different times. **Panel B:** Incubation with trypsin effects on γ C adsorbed to NPs. Ctrl stands for native γ C incubated with trypsin after 60 min.