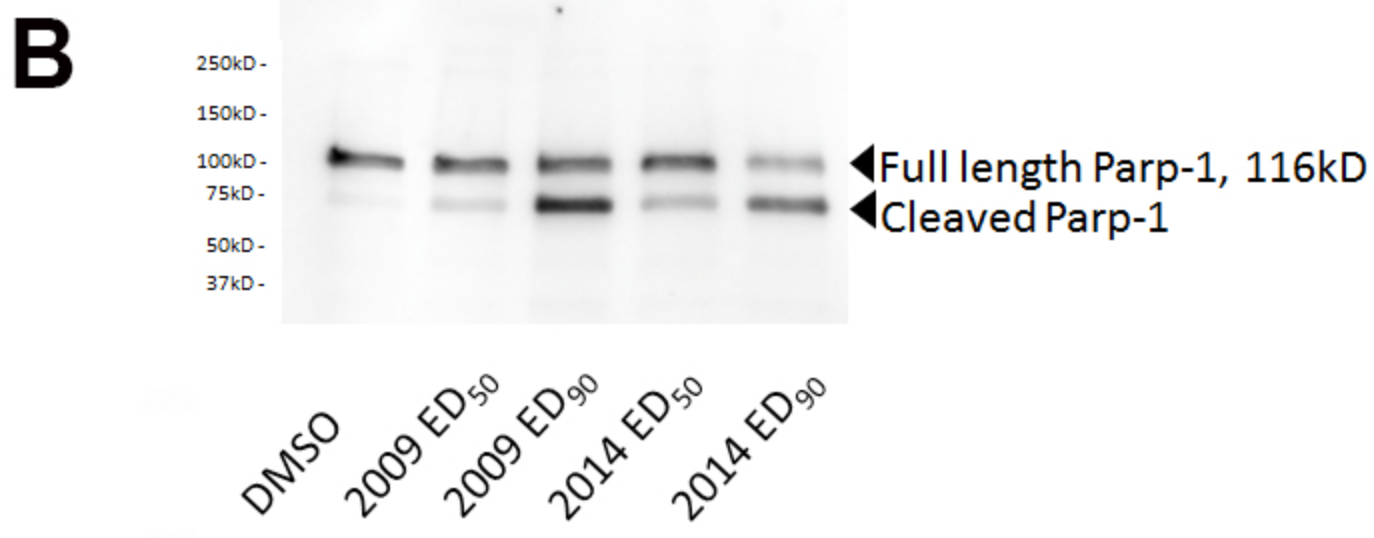
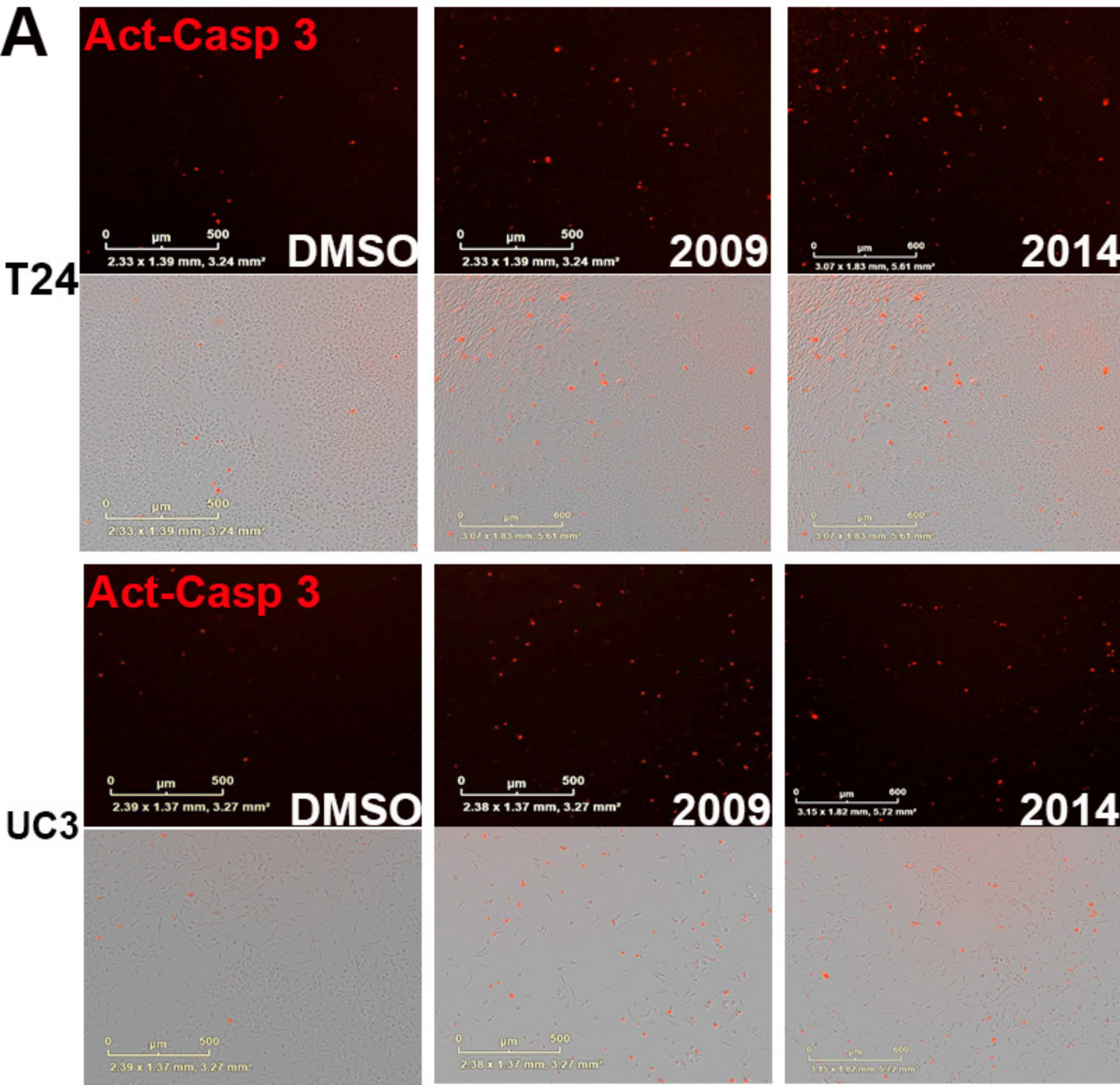


Supplementary Figure 3



Supplementary Figure 3. Confirmation of cell death induction by caspase activity assay and PARP cleavage. Representative images for caspase activity via red fluorescence [A] for the data calculated and shown in Figure 2, each with matching brightfield images. Representative examples for T24 and UC3 cells are shown from cells treated with the growth-inhibitor EC50 concentrations for each drug, in each cell line. PARP cleavage was used to confirm the induction of apoptotic mechanisms by western blotting for cleaved PARP1 [B], with representative cell experiments in which UC3 cells were treated with EC50 and EC90 concentrations of each drug.