

Supplemental Figures

Figure S1

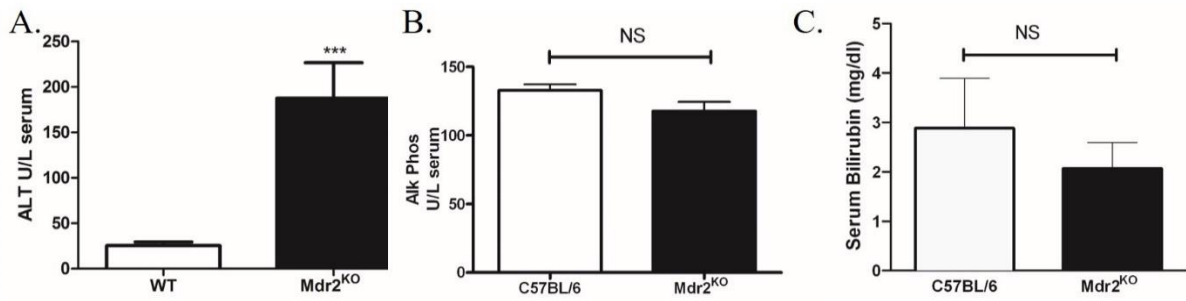


Fig. S1. Alanine amino transferase assessment of hepatic injury in WT and Mdr2^{KO} mice. Using WT and Mdr2^{KO} mice (n=6), blood was collected from the inferior vena cava and plasma was separated and assayed for A. Alanine aminotransferase (ALT) activity (Sekisui Diagnostics, P.E.I., Canada), B. Alkaline Phosphatase activity, C. Serum bilirubin.

Figure S2.

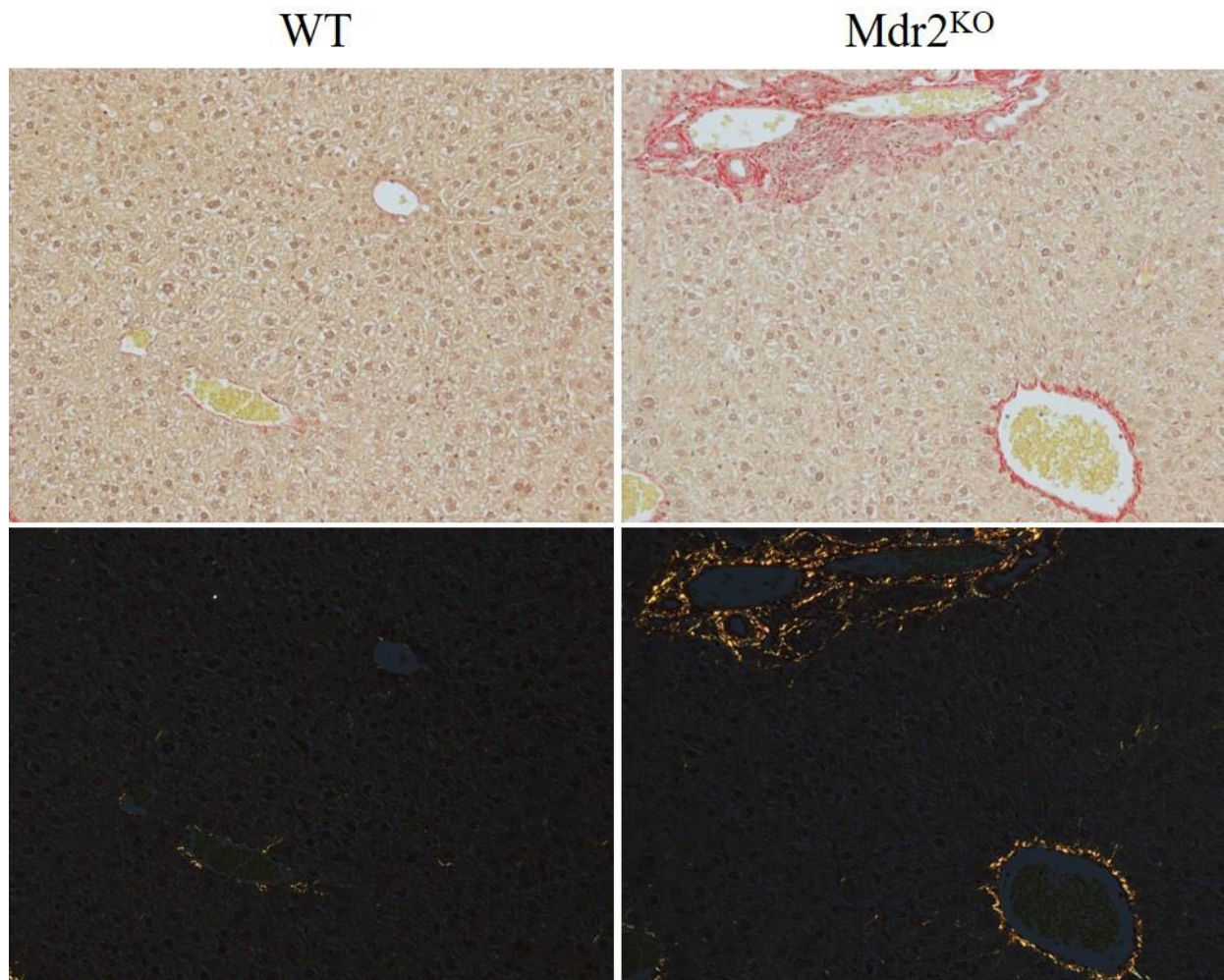


Figure S2. Polarized light exposure of picosirius red stained hepatic sections prepared from WT and MDR2^{KO} liver.

Figure S3

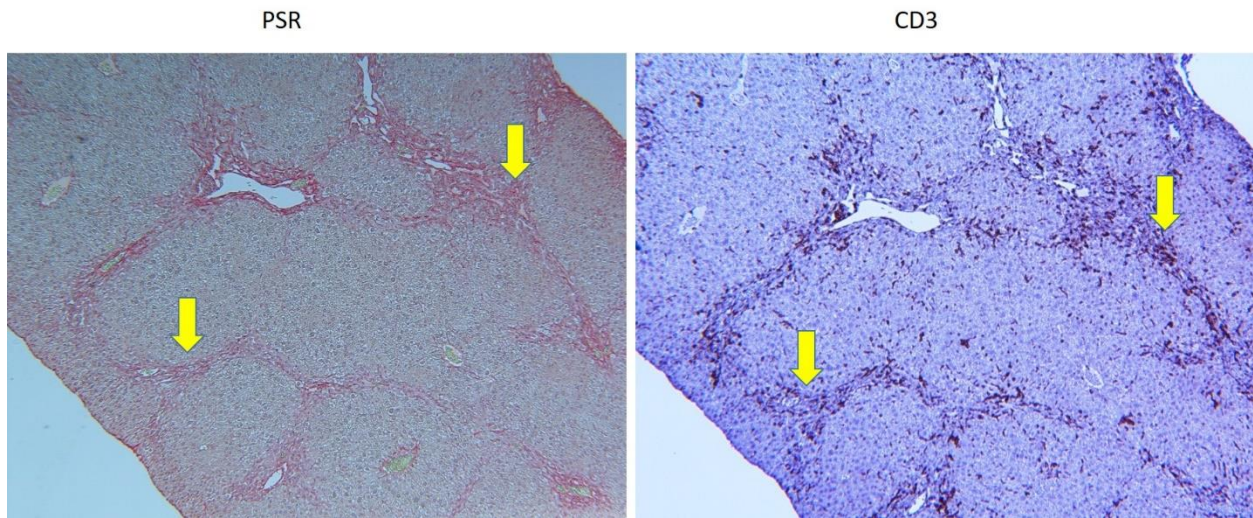


Figure S3. Comparison of Picrosirius red staining and CD3 histochemical staining of serial sections prepared from $Mdr2^{KO}$ liver. Arrows indicate increased CD3+ lymphocytes colocalizing with fibrosis (PSR).

Figure S4.

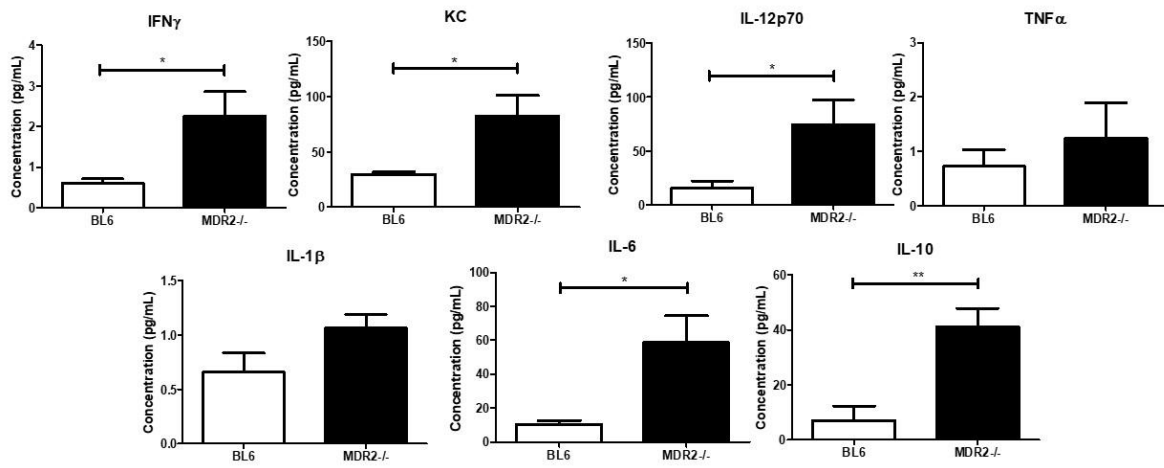
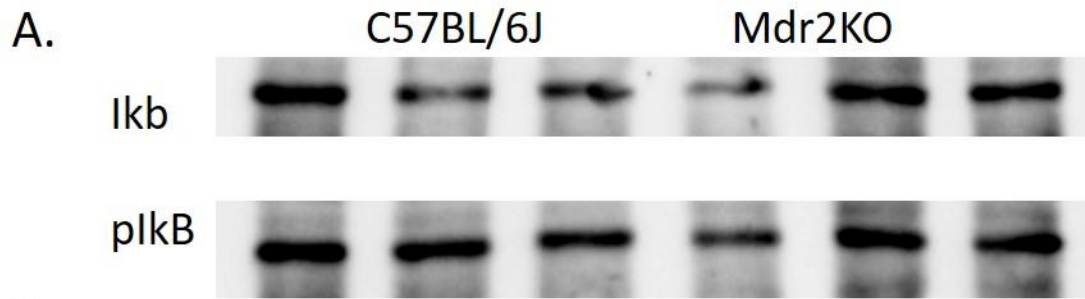


Figure S4. Mesoscale analysis of inflammatory cytokines in WT C57BL6 and Mdr2^{KO} mice.

Figure S5



B.

		Mean	SEM	N	
pIKB	WT	2318407.67	226895.57	6	
	Mdr	1889664.67	271817.41	6	not significant
iKB	WT	1559875.00	223610.43	6	
	Mdr	1972716.67	571351.02	6	not significant
pIKB/iKB ratio	WT	1.60	0.19	6	
	Mdr	1.14	0.17	6	not significant

Figure S5. **A.** Western immunoblotting analysis of Ikb, pIkb in LE prepared from WT and Mdr2^{KO} mice. **B.** Quantification of Western blots and determination of the pIkb/Ikb ratio. Data are means +/- SEM, n=6 per genotype. Statistical analysis was via students t-test, *p<0.05;**p<0.01;***p<0.001.

Figure S6

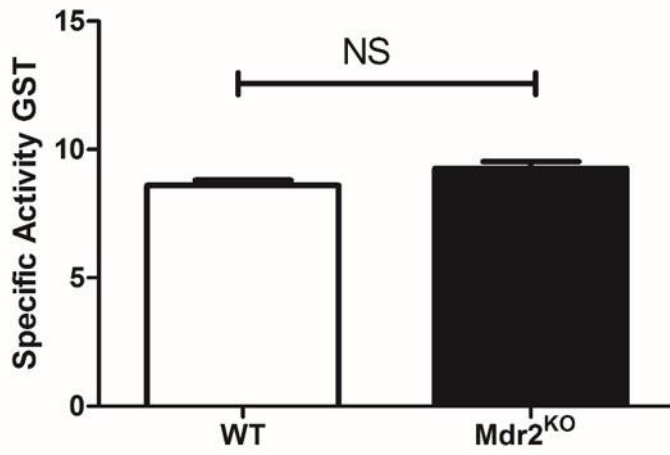


Fig S6. Glutathione S-transferase Activity in WT and Mdr2^{KO} LE. N=6/group. Data are means +/- SEM, n=6 per genotype. Statistical analysis was via students t-test, NS=not significant

Figure S7.

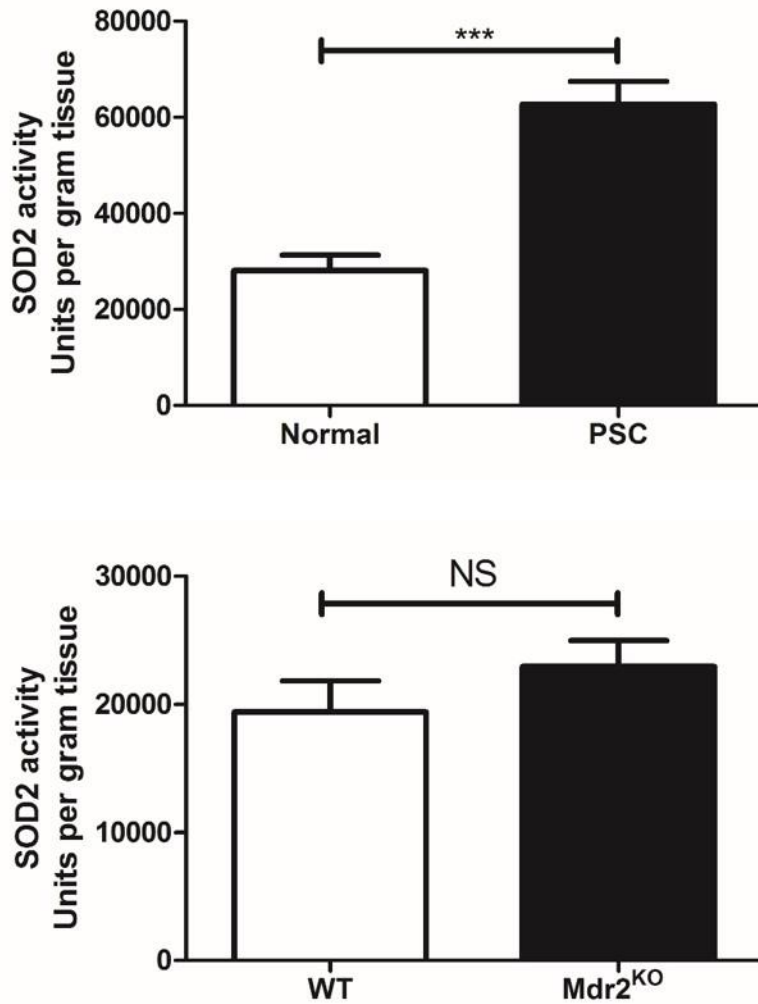


Fig S7. Mitochondrial superoxide dismutase activity in LE prepared from normal/PSC and WT/Mdr2^{KO} hepatic tissue. N=6/group. Data are means +/- SEM, n=6 per genotype. Statistical analysis was via students t-test, ***p<0.001.