

Supplementary materials

Figure S1: Number of PCCRC-3yr observed, and expected if the rate were reduced to 5.5% or 3.6% as achieved in the UK Bowel Cancer Screening Programme.

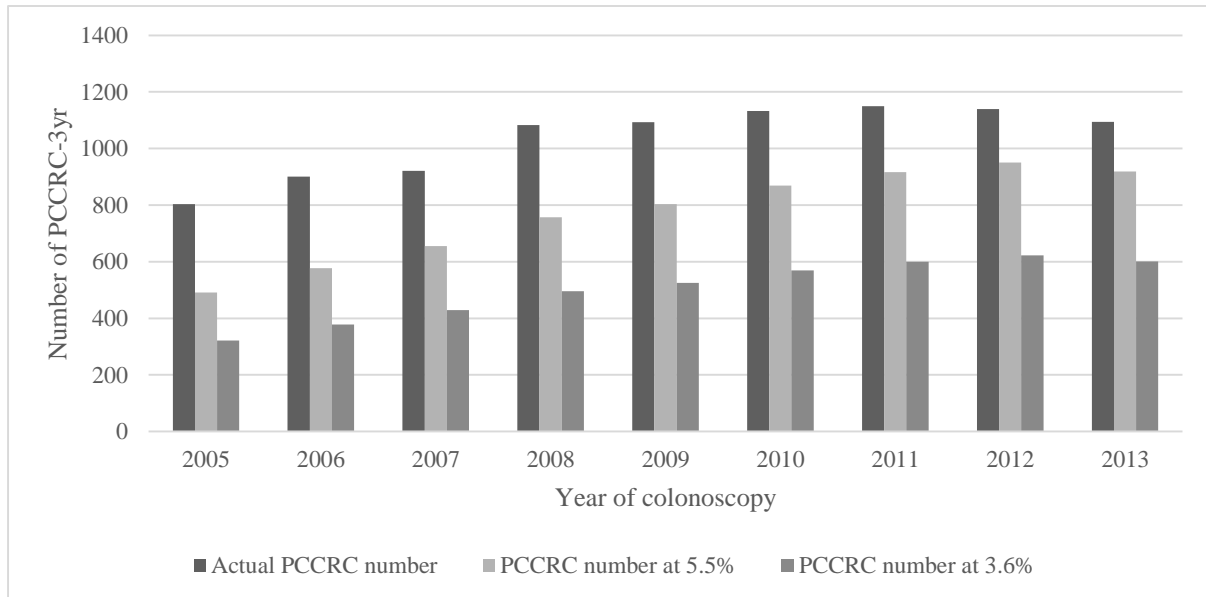


Table S1: Percentiles showing the spread of the unadjusted PCCRC-3yr rate for each 3-year period.

Percentile	PCCRC-3yr rate (%)		
	2005 to 2007	2008 to 2010	2011 to 2013
1%	2.6	3.3	3.2
5%	4.6	4.7	4.0
10%	5.4	4.9	4.8
25%	6.8	6.0	5.5
50%	8.8	7.4	6.7
75%	10.5	9.1	8.1
90%	12.7	11.9	9.1
95%	16.3	13.8	10.4
99%	28.6	18.4	13.6

Table S3. Change in the PCCRC-3yr rate for each provider from the earliest cohort (2005 to 2007) to the latest (2011 to 2013).

	Adjusted movement 2005 to 2013		Unadjusted movement 2005 to 2013	
	Number of providers	%	Number of providers	%
No change	25	19	67	50
No change or movement of one quintile higher or lower	75	56	120	89
1 quintile lower PCCRC-3yr rate	26	19	32	24
2 quintiles lower PCCRC-3yr rate	17	13	6	4
3 quintiles lower PCCRC-3yr rate	6	4	1	1
4 quintiles lower PCCRC-3yr rate	6	4	0	0
1 quintile higher PCCRC-3yr rate	24	18	21	16
2 quintiles higher PCCRC-3yr rate	18	13	6	4
3 quintiles higher PCCRC-3yr rate	9	7	2	1
4 quintiles higher PCCRC-3yr rate	4	3	0	0