

a Dataset #20 (GSE76771): Tunicamycin (ER Stress) vs. control

Original data

After cqn normalization

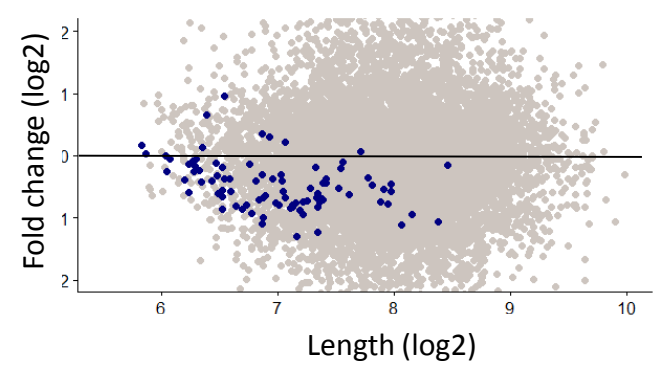
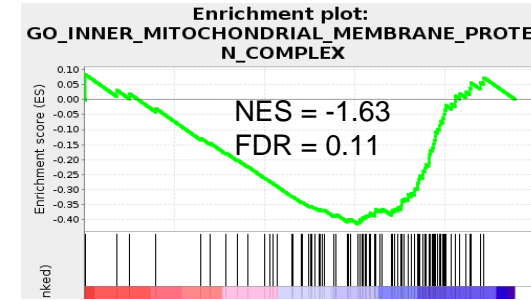
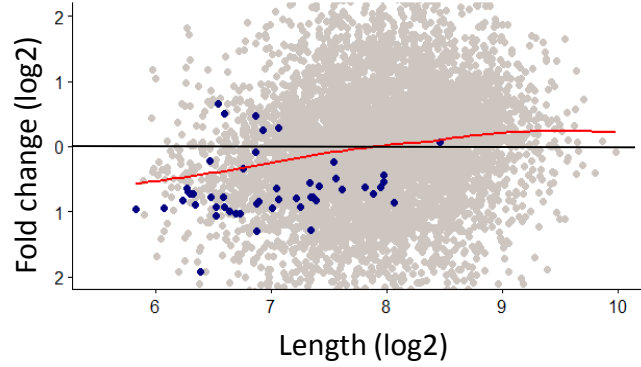
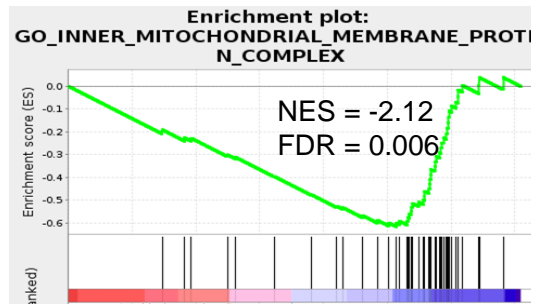
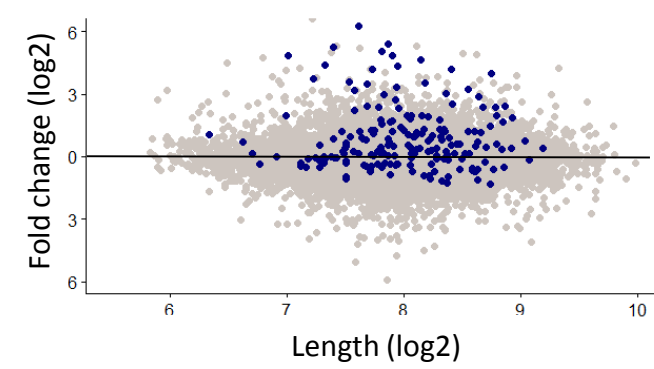
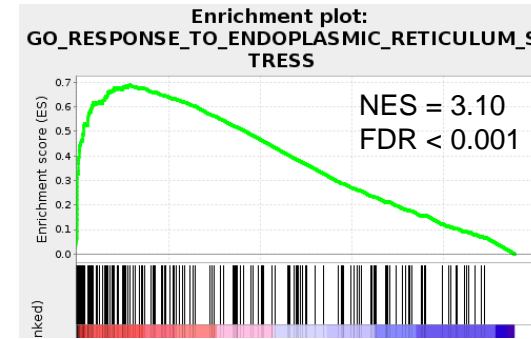
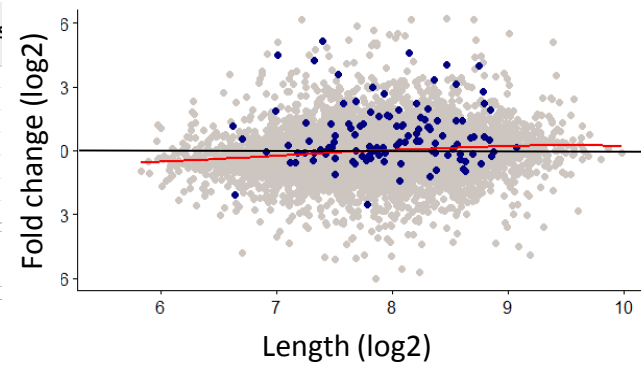
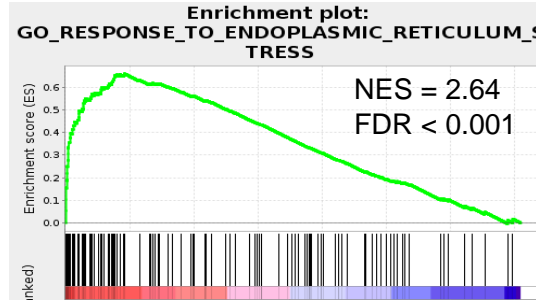


Figure S5

b Dataset #8 (GSE101738): NCS (DNA damage) vs. control

Original data

After cqn normalization

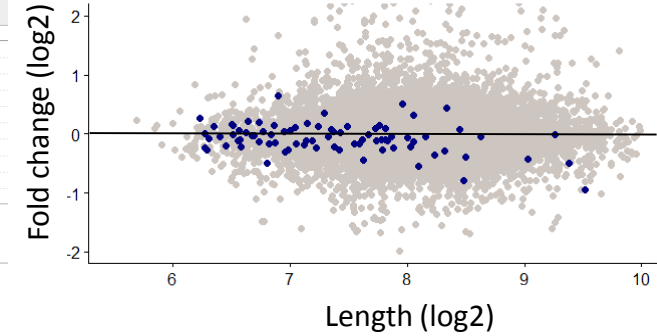
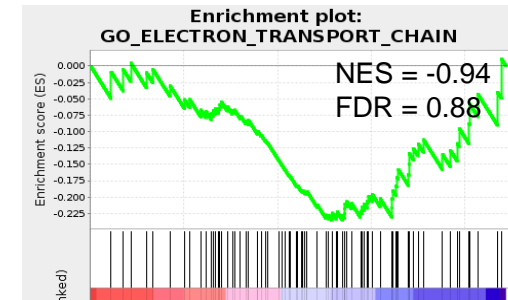
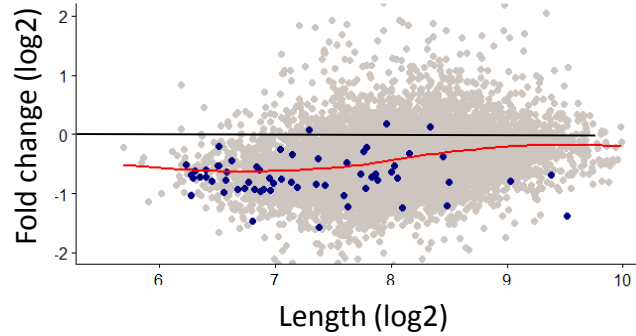
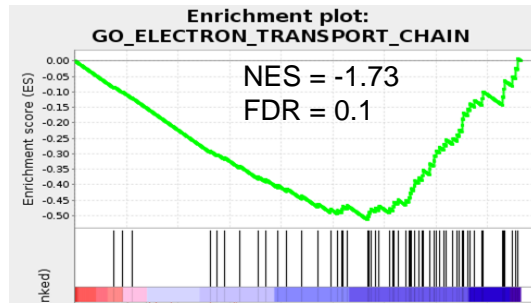
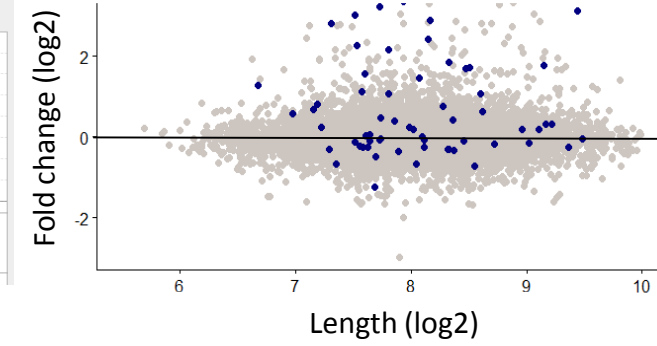
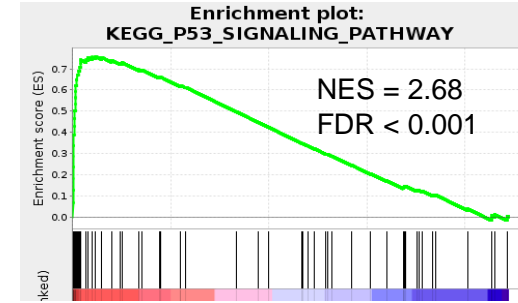
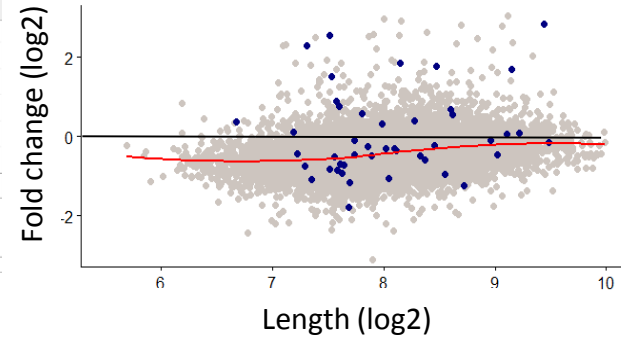
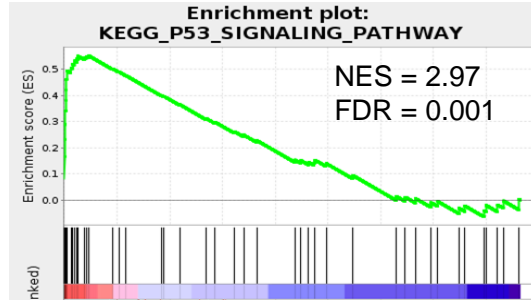


Figure S5

c Dataset #22 (GSE106847): AA147 treatment (ER Stress) vs. control

Original data

After cqn normalization

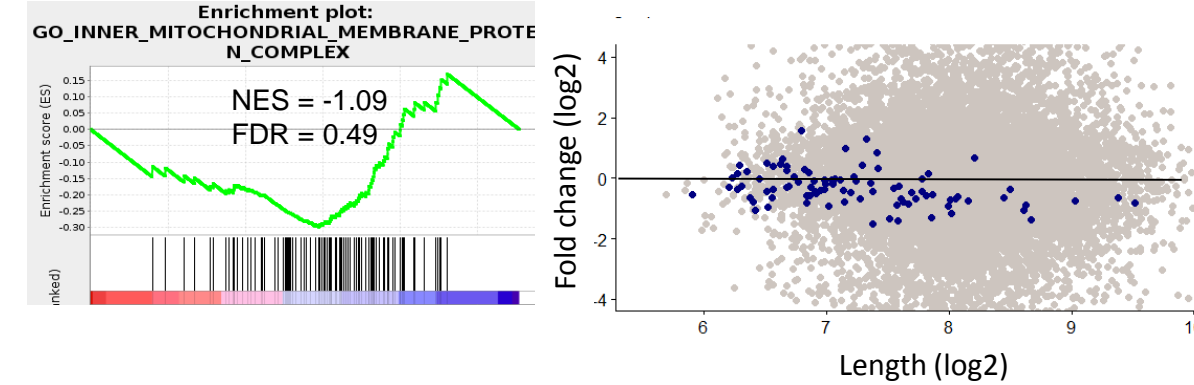
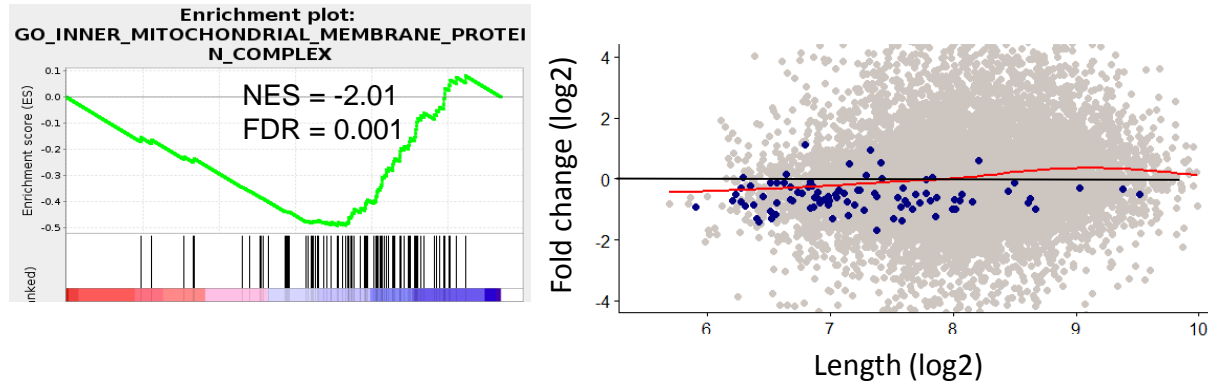
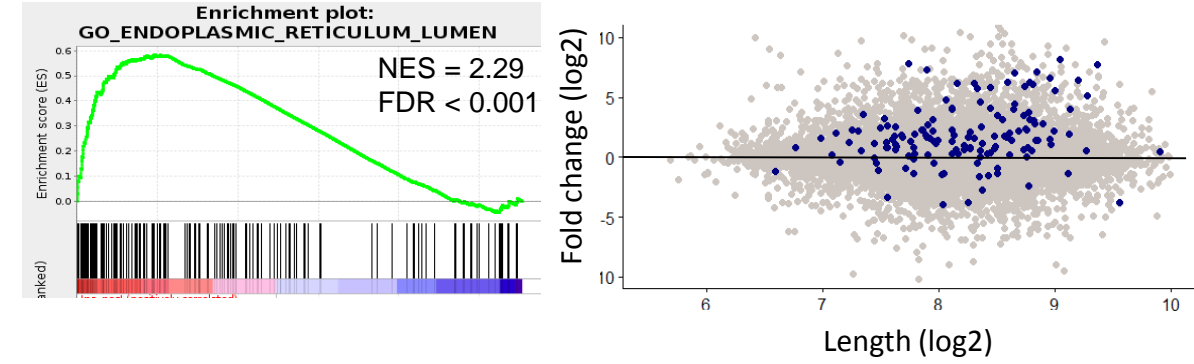
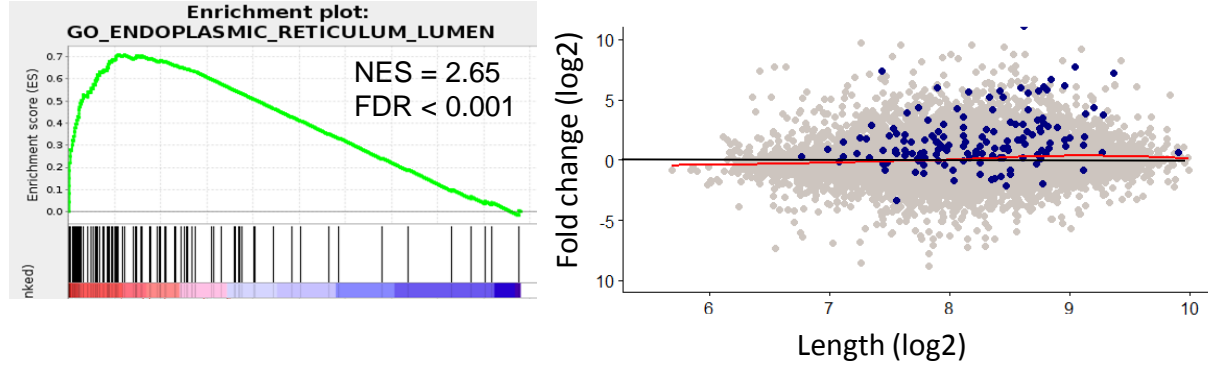


Figure S5

d Dataset #21 (GSE84989): Thapsigargin (ER Stress) vs. control

Original data

After cqn normalization

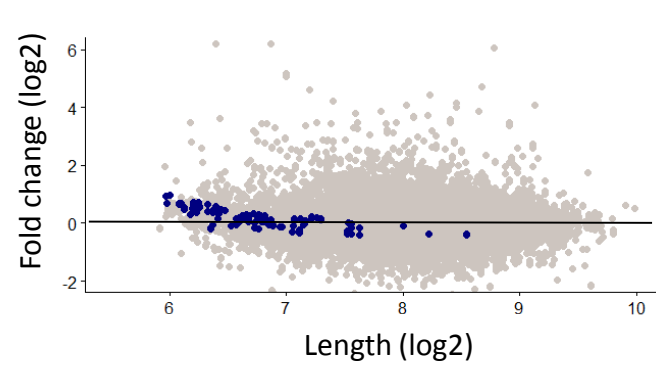
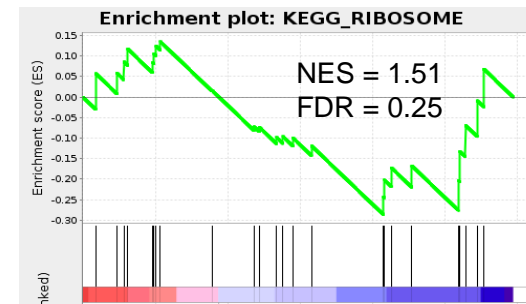
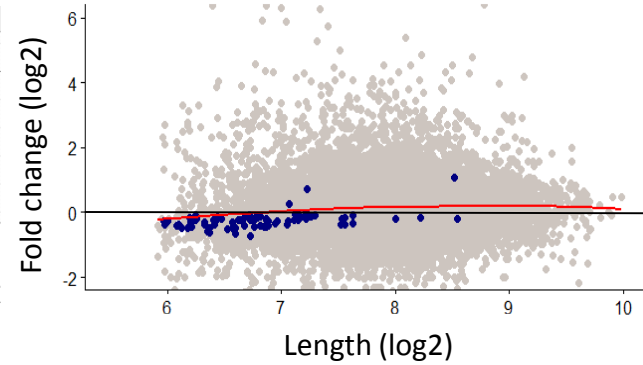
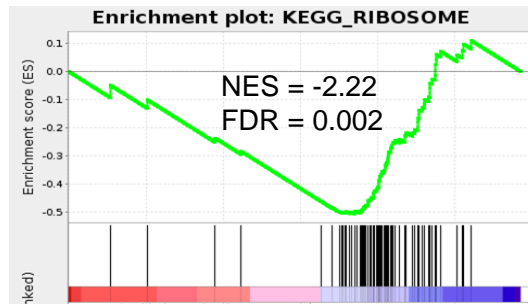
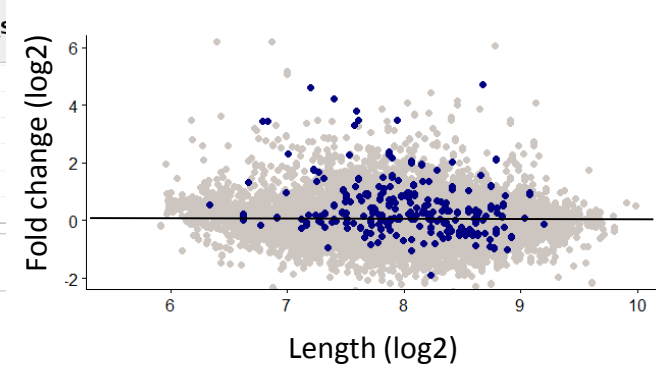
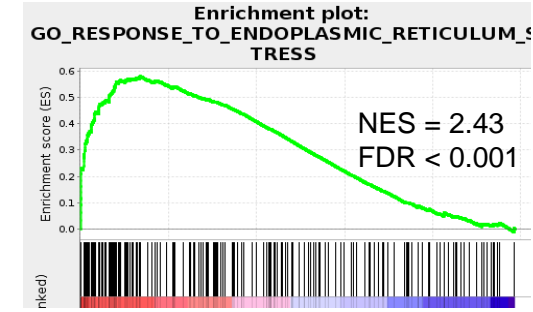
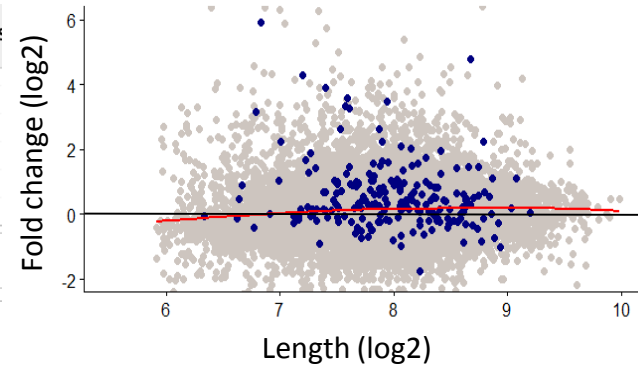
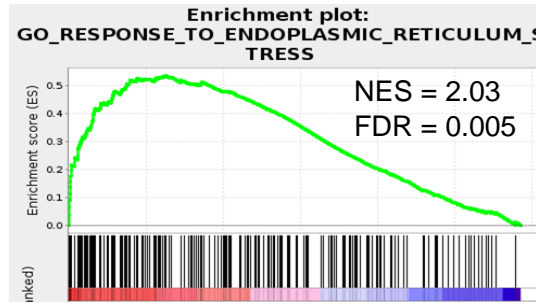


Figure S5

e Dataset #19 (GSE42509): RAS^{G12V} activation (senescence) vs. control

Original data

After cqn normalization

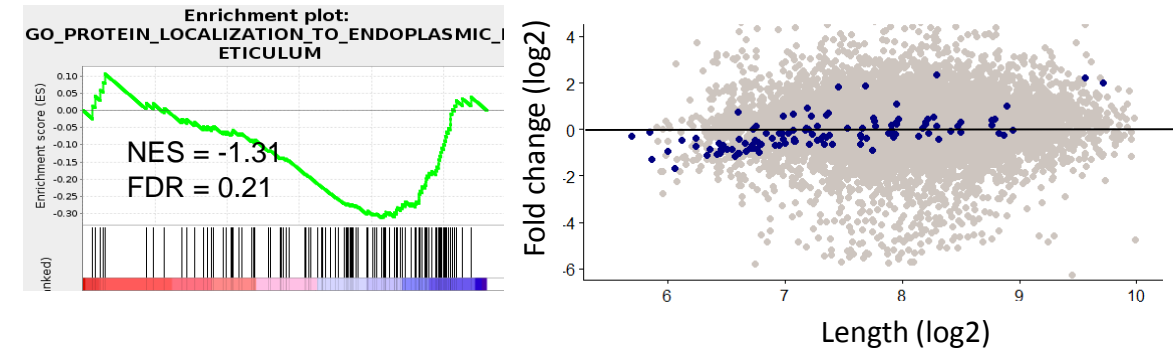
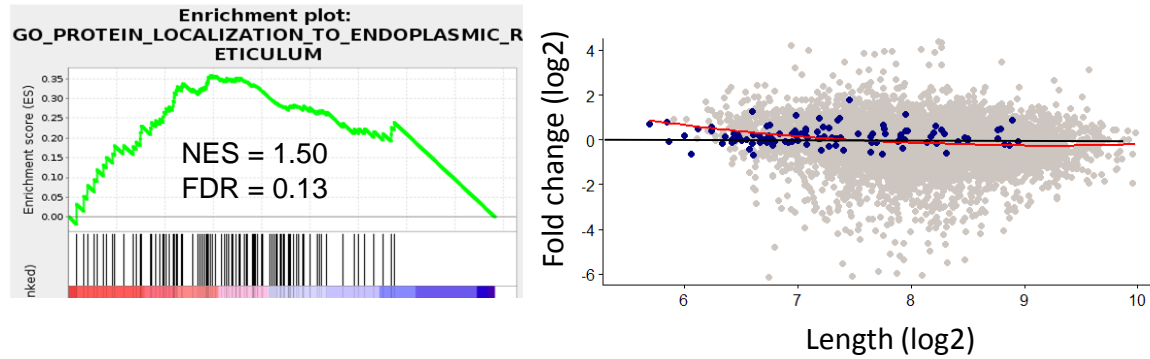
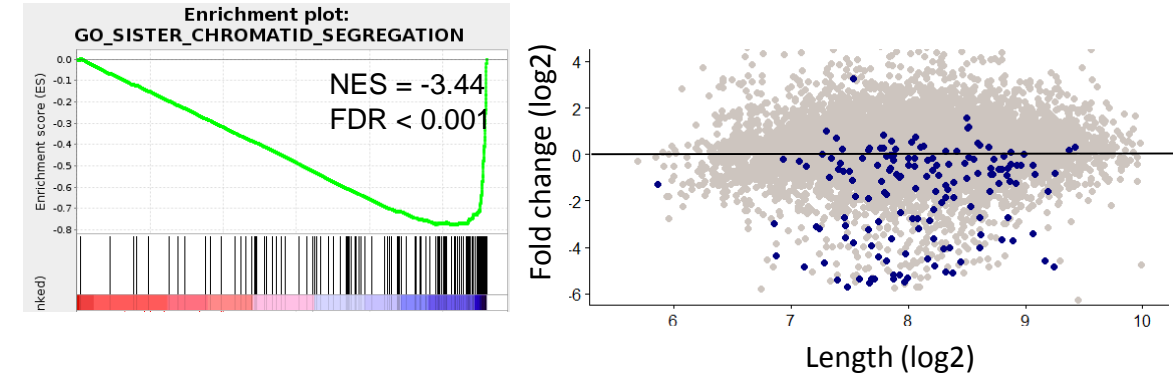
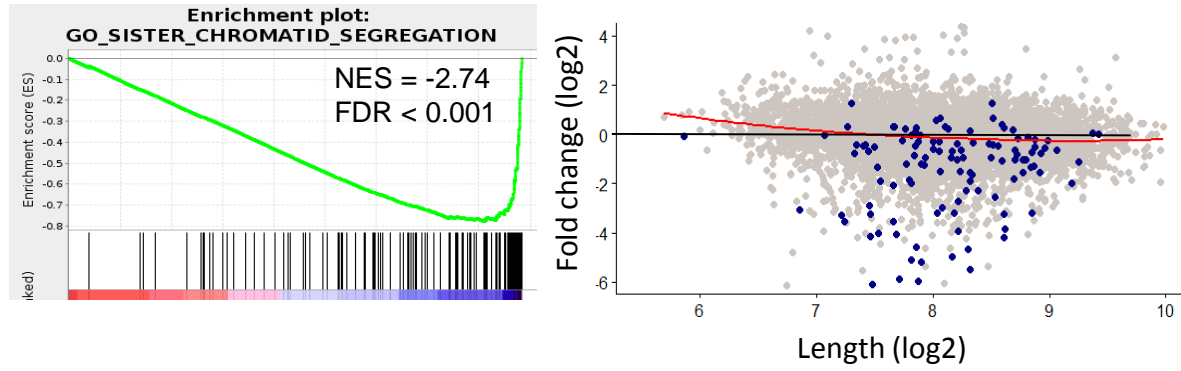


Figure S5

f Dataset #18 (GSE101788): AI-10-49 treatment (apoptosis) vs. control

Original data

After cqn normalization

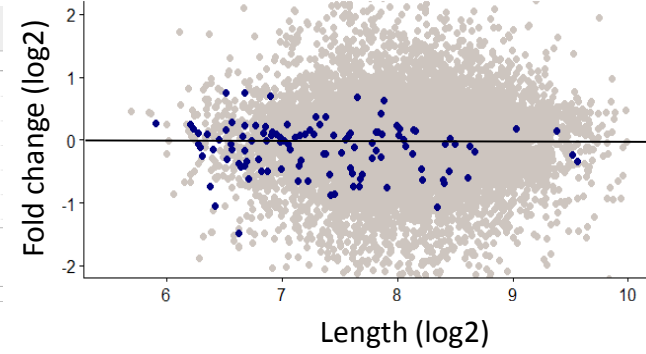
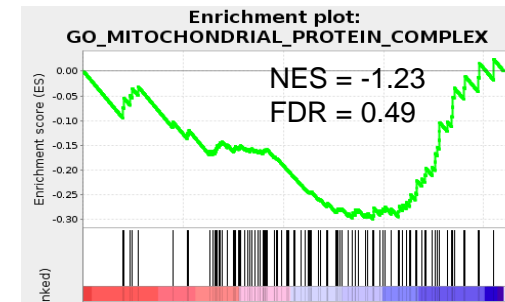
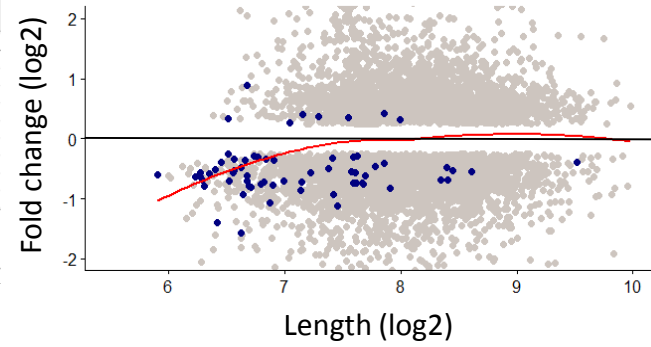
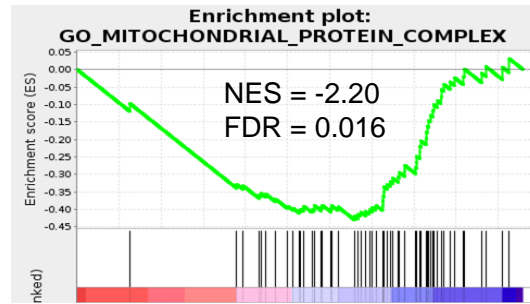
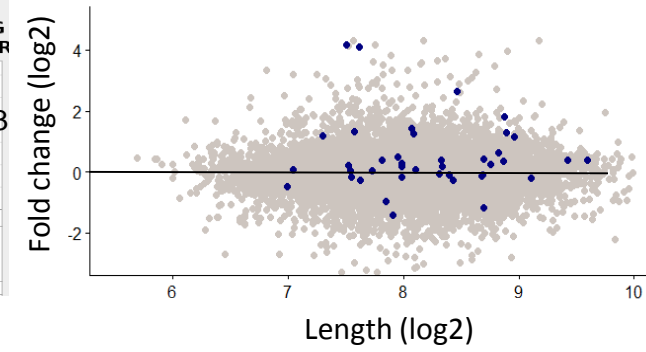
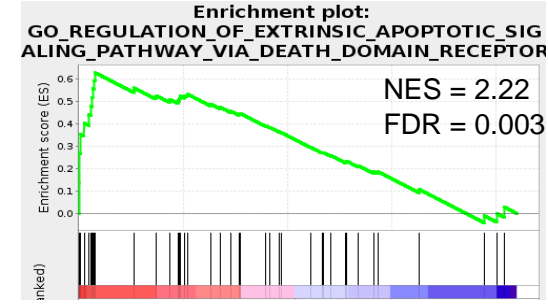
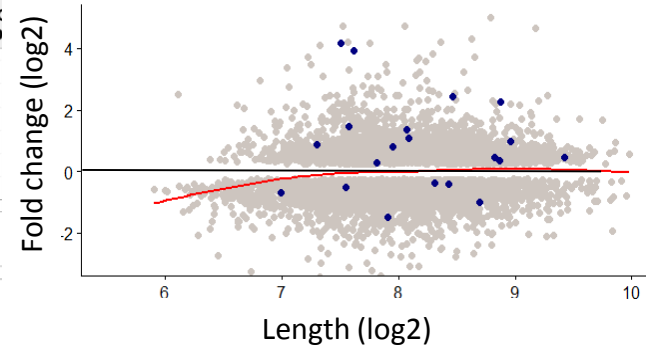
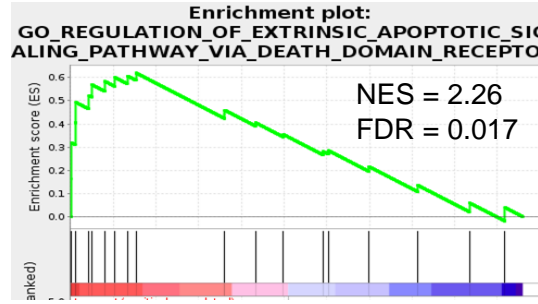


Figure S5