

LHC3R3

LHC3R3-T32E/T33E

LHC3R3-T32A/T33A

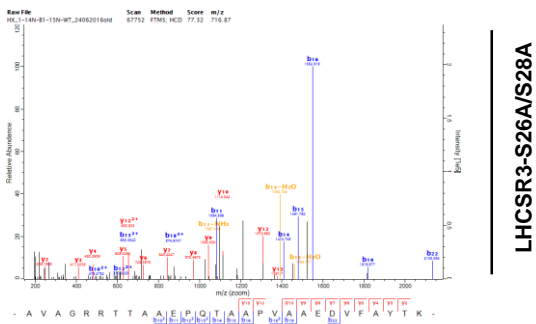


Figure S5. Annotated fragmentation spectra of non-phosphorylated and phosphorylated versions of the N-terminal LHCSR3 peptide (S/A)V(S/A)GRR(T/A/E)(T/A/E)AAEPQTAAPVAAEDVFAYTKSA.

(A-D) Wildtype LHCSR3.

(E-F) LHCSR3-T32E/T33E.

(G-H) LHCSR3-T32A/T33A.

(I) LHCSR3-S26A/S28A.